

Ghost-Buster II Column

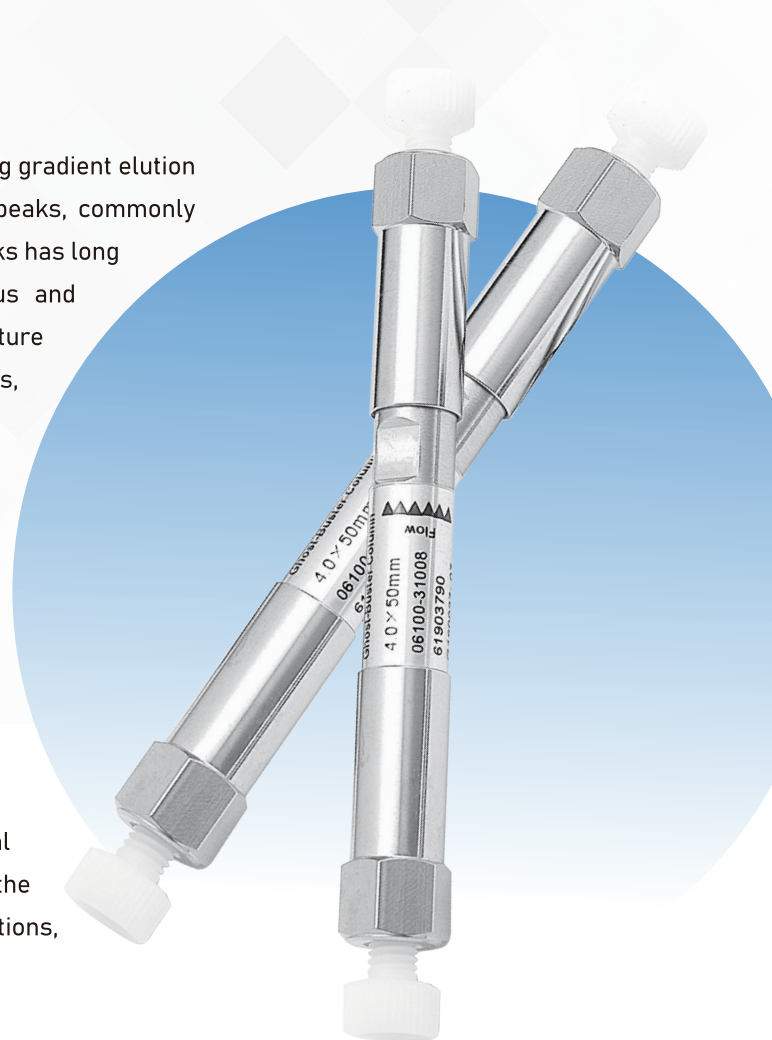
welch

Further Improvement, Excellent Performance!

During the chromatographic separation process, especially during gradient elution or prolonged instrument usage, intermittent chromatographic peaks, commonly known as ghost peaks, are prone to occur. The issue of ghost peaks has long plagued analysts, and eliminating them has been a laborious and time-consuming task. While GB columns commonly used can capture ghost peaks, they often come with significant baseline fluctuations, thereby affecting the integration of chromatographic peaks. But now, this problem will no longer be an issue!

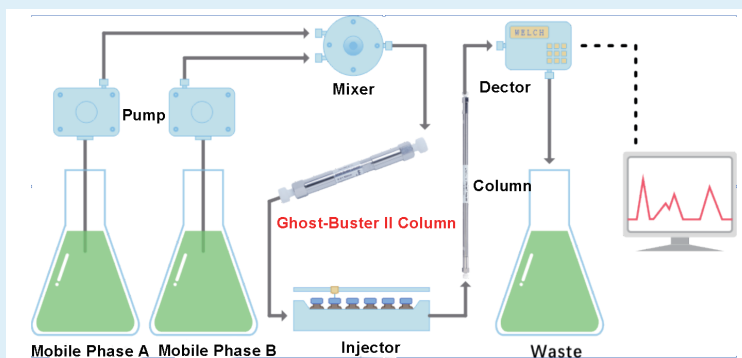
Brand New Product

Welch Materials is proud to introduce the second-generation Ghost-Buster Column II column, which has been further upgraded and improved. It excels in adsorbing impurities in the mobile phase, eliminating ghost peaks. At the same time, it eliminates the baseline drift issue caused by excessively high initial proportions of the aqueous phase in the gradient, ensuring that the chromatographic baseline remains stable under such conditions, greatly reducing baseline fluctuations.



For analysts who have chromatograms suffering from ghost peaks, the Ghost-Buster II Column is a great solution.

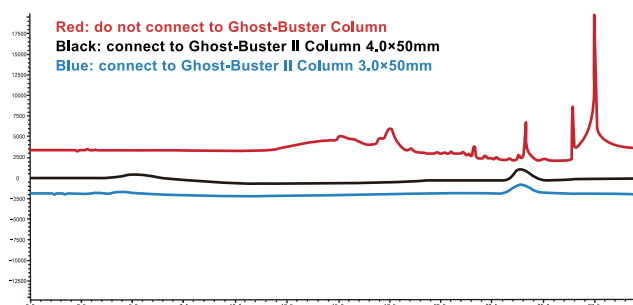
! Install Ghost-Buster II Column between injector and mixer. Samples must not pass through the Ghost-Buster II Column.



Stronger Capturing Effect

Ghost-Buster II Column uses a specifically optimized stationary phase and improved hardware. Ghost-Buster II Column removes impurities in the mobile phase with stronger retention.

If you have any problem or require further information, please contact info@welchmat.com.



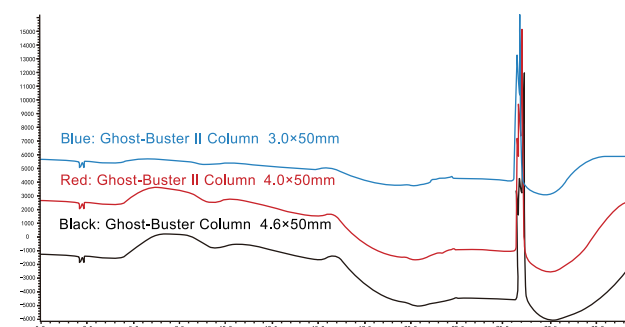
Column: C18 column
 GB Column: Ghost-Buster II Column, 3.0×50mm
 Ghost-Buster II Column, 4.0×50mm
 Mobile phase: A: 0.05% phosphoric acid solution B: acetonitrile
 Gradient program:

Time/min	0	3	15	20	20.1	30
A/%	95	95	15	15	95	95
B/%	5	5	85	85	5	5

>> From the above case, it can be seen that Ghost-Buster II Column captures impurities with high retention and significantly improves baseline drift.

More Stable Baseline

When the initial proportion of aqueous phase is high (generally more than 95%), using conventional GB columns can remove impurities effectively. But some ghost peaks may still occur when the proportion of mobile phase has a drastic change in a few minutes or the baseline has large fluctuation. By improving the overall design of the Ghost-Buster II Column, the mobile phase is fully mixed before entering the analytical column, greatly reducing the baseline fluctuation and drift in the initial phase of the gradient program.



Column: C18 column
 GB Column: Ghost-Buster II Column, 3.0×50mm
 Mobile phase: A: phosphoric acid buffer B: acetonitrile
 Gradient program:

Time/min	0	4	5	8	11	15
A/%	96	89	89	84	80	50
B/%	4	11	11	16	20	50

>> From the above case, it can be seen that Ghost-Buster II Column, 3.0×50mm is perfectly compatible with the high proportion of aqueous phase, reducing the run time of the gradient program and providing a more stable baseline.

Precautions

- For new columns, please wash with 80% methanol-water at a flow rate of 1.0 mL/min for 15 minutes before connecting to the equipment.
- Please understand that not all impurities can be captured and adsorbed by the Ghost-Buster Column.
- When using ion-pair reagents in the mobile phase, they may be adsorbed, affecting the retention time or peak shape of the target compound. **Please decide whether to use the column based on chromatographic performance under such mobile phase conditions.**
- If you notice a decrease in capturing efficiency, **it is recommended to replace the column promptly. It is not meant for unlimited reuse after connecting.**

Ordering Information

P/N	Product	Specification	Max. pressure
06100-31008	Ghost-Buster II Column	4.0×50mm	40 MPa
06100-31016	Ghost-Buster II Column	3.0×50mm	40 MPa

Like our page @WelchMaterial

Follow us @MaterialsWelch

Join the WelchMaterials