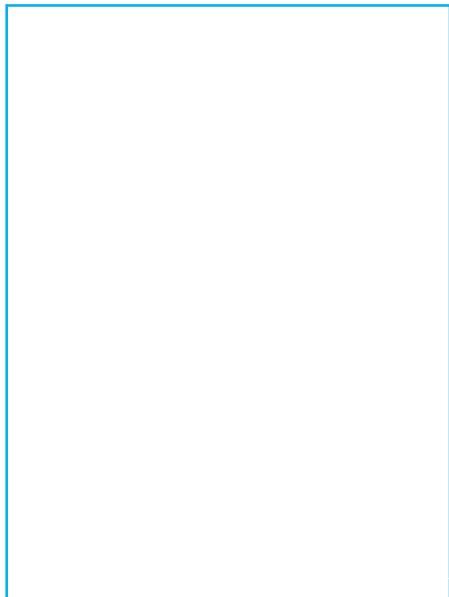


Name: \_\_\_\_\_ Date: \_\_\_\_\_

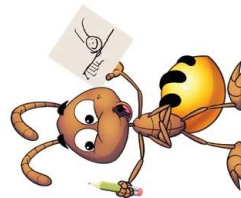
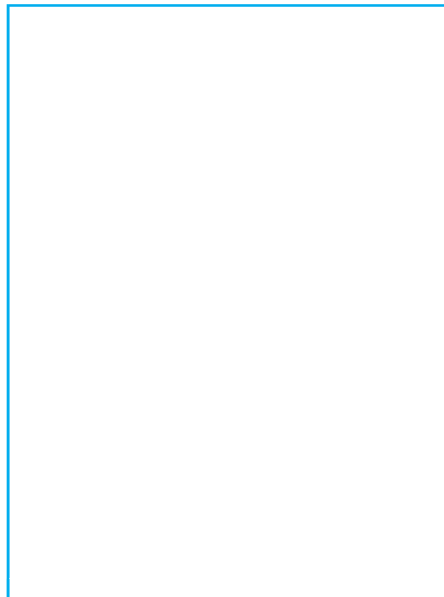
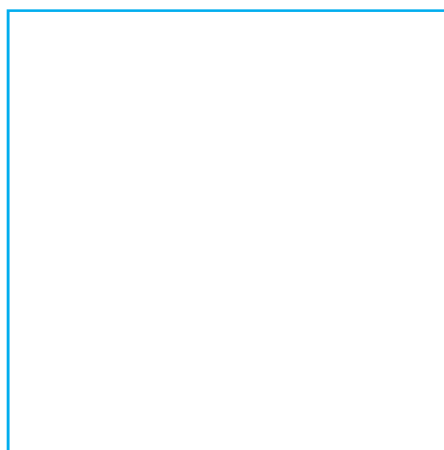
Name: \_\_\_\_\_



a mug and a cup

---

---



an ant

a plug

a pot and a pan

### Write, read, draw

**Instructions:** Read the book *Can you spot it? [1]* to complete these activities.

**Words for writing:** Look at the picture and fill in the missing sounds.

**Words for drawing:** Read the words or sentence and draw a picture for each word or sentence.



Name: \_\_\_\_\_

Date: \_\_\_\_\_



plu \_

pl \_ g

p \_ ug



mu \_

m \_ g

\_ ug

bin    mug    spot    sink



Can you \_\_\_\_\_ a tap?



Can you spot a \_\_\_\_\_?



Can you spot a \_\_\_\_\_?



Can you spot a \_\_\_\_\_?

### What's missing?

**Instructions:** Read the book *Can you spot it?* [1] to complete these activities.

**What sound is missing?** Fill in the missing sounds. Use the picture to help.

**What word is missing?** Read the sentence. Choose a word to complete the sentence. Use the picture to help.

Name: \_\_\_\_\_

Date: \_\_\_\_\_



--	--	--	--	--	--	--	--	--	--	--

--	--	--	--	--	--	--	--	--	--	--

Can	you	spot	a	mug	and	a	cup	?
Is	the	lid	on	the	bin	?		

## Read it, mix it, make it

### Instructions:

Read the sentence aloud to an adult or partner three times. Cut up and mix up the sentence. Make the sentence again and read it to someone, to check it makes sense.

**Extension:** Write the sentence and illustrate.


# Bingo Caller's word grid

Set 3 Can you spot it? [1]

can	pot	sink	plug	spot	the
and	you	on	pan	cup	mug
up	bin	lid	tap	it	ant


1 Set 3 Can you spot it? [1]

bin	pot	can
up	you	on
and	sink	lid




2 Set 3 Can you spot it? [1]

mug	sink	plug
you	on	pot
bin	and	tap




3 Set 3 Can you spot it? [1]

cup	plug	spot
on	sink	pan
lid	ant	it




4 Set 3 Can you spot it? [1]

pan	spot	the
it	cup	mug
tap	plug	ant




5 Set 3 Can you spot it? [1]

tap	pan	cup
lid	ant	it
can	spot	the



6 Set 3 Can you spot it? [1]

plug	up	lid
you	and	mug
bin	pot	the



## Can you spot it? [1] – bingo game



**Materials:** 2 x copies of the word grid: 1 cut up in a hat or container and 1 for the Bingo Caller, counters for players, individual player boards (enlarge if needed)

**Instructions:** The Bingo Caller takes a word out of the hat, reads it aloud and crosses it off the word grid. Players cover the word with a counter on their player board if they have that word. When all words are covered on a player board, the player calls out 'Bingo!' The Bingo Caller uses the word grid to check the winner's bingo card.

**Variation:** This game can be shortened by players getting 3 in a row.