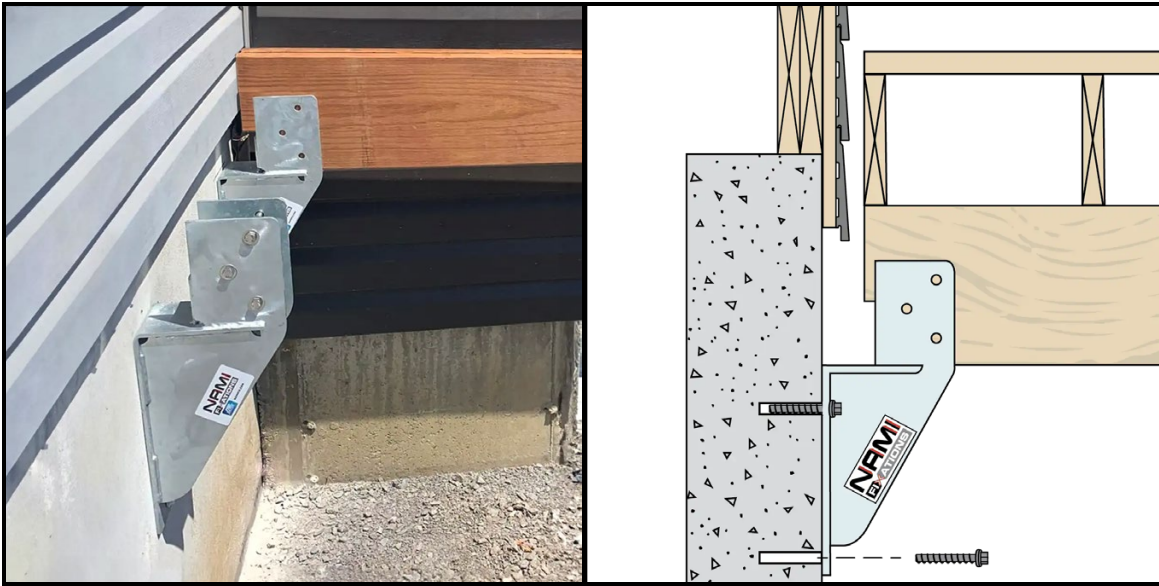


# INSTALLATION GUIDE



N2/NP3/NP4



## USAGE

The hanger is used to attach a perpendicular beam directly to the foundation.

## FEATURES

- Made of galvanized steel.
- Load capacity up to 4,000 lbs validated by engineering.
- Provides a clearance of 3" from the foundation.

## GENERAL INFORMATION

This calculation is established for a minimum 2 x 2 x 10 beam.

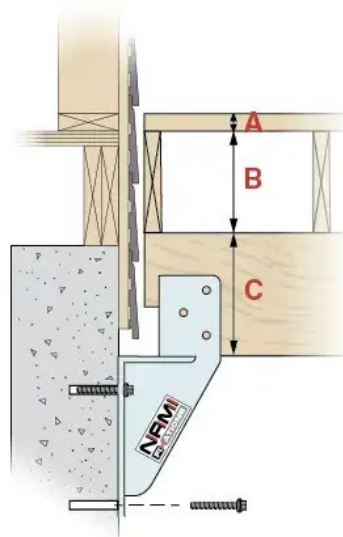
## DETERMINE THE "FINAL HEIGHT" OF THE DECK

By subtracting this measurement (the final height), you will obtain the position of your hanger.

For example:

**A** Floor 11 1/2" + **B** Joists 7 1/4" + **C** Beam 9 1/4" = 18"  
(see illustration below)..

**Final Height: 18" = Hanger Height**

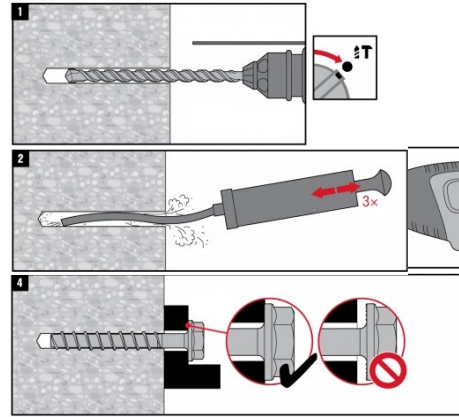


**NOTES:** The installation of these hangers requires a foundation of at least 6" thickness (15 MPA). Do not install them on a block foundation.

# INSTALLATION GUIDE



N2/NP3/NP4

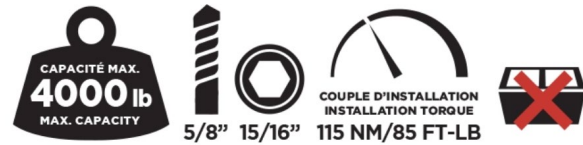


## DRILLING

The position and marking of the hangers are ready. **Remember to maintain 8" clearance around the opening.** It is essential to choose the drill bit size to drill a hole corresponding to the anchor size.

**Use a 5/8" drill bit.**

**Drill 1/2" deeper than the length of the anchor provided with the hanger.**



## ATTACHMENT OF HANGERS

To ensure compliance with our warranty, you must use the anchor screws provided with the hanger. Firmly screw the hanger against the foundation. Once all required hangers are secured, you can place your wooden pieces into the brackets and fasten them with the recommended hardware.

**Your starting beam is now ready to receive your structure!**