



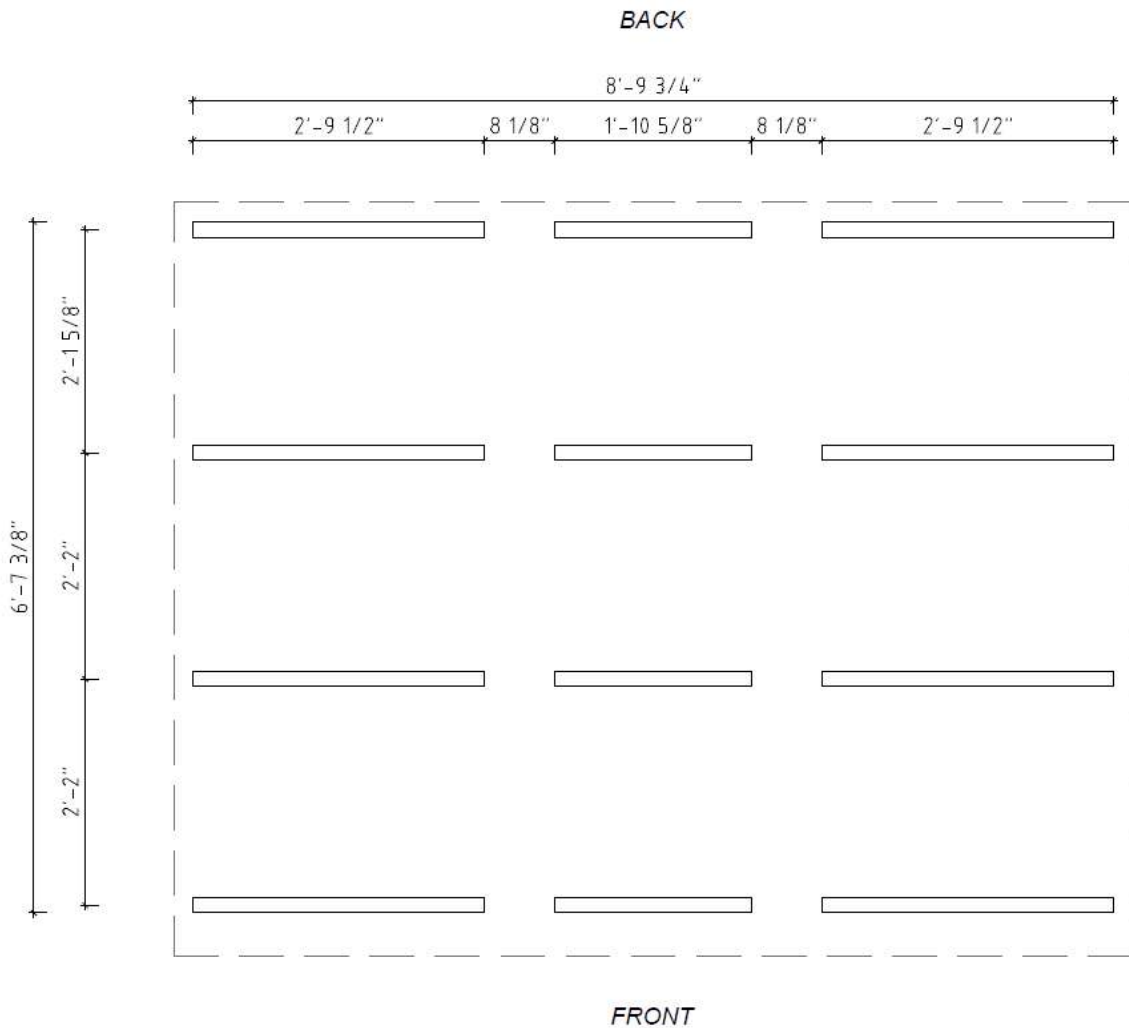
Garden-Series Model G7 & G7S

**INSTALLATION GUIDE OF  
SAUNUM OUTDOOR SAUNAS**

Thank you for purchasing a SaunaLife outdoor sauna!

## 1. INSTALLATION REQUIREMENTS

The base or foundation for Sauna must be **leveled** and **stable**. Sauna must be at least 3 inches higher from the surrounding ground. All base beams must have a support under them.



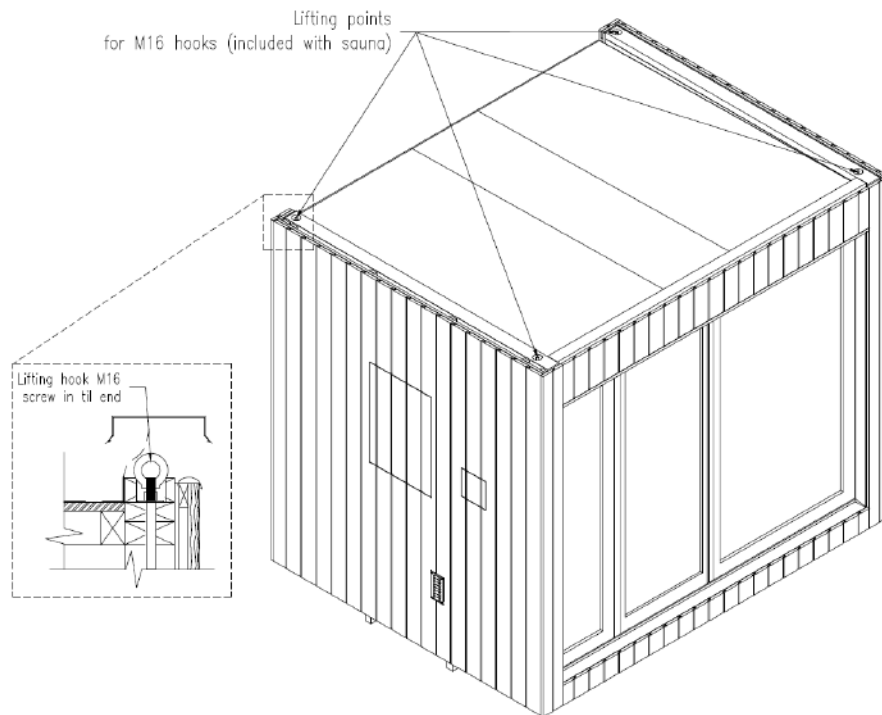
### **Recommendation:**

*We recommend placing Sauna on concrete blocks or strips that have a compressed gravel underneath. Using geotextile under the Sauna prevents the growth of grass and weed.*

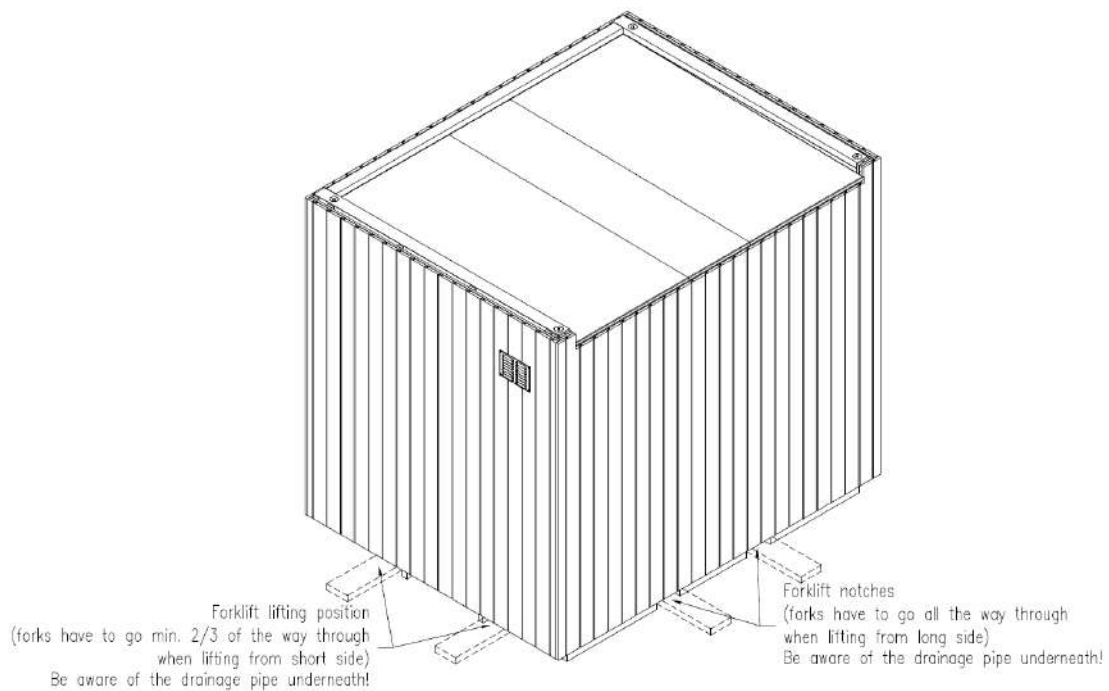
*It is also possible to place the Sauna on terrace or pavement, but the Sauna should still be higher than the surface.*

## 2. TRANSPORT

Sauna can be lifted from **above**:



Sauna can be lifted from **below**:



### 3. FINAL ASSEMBLY

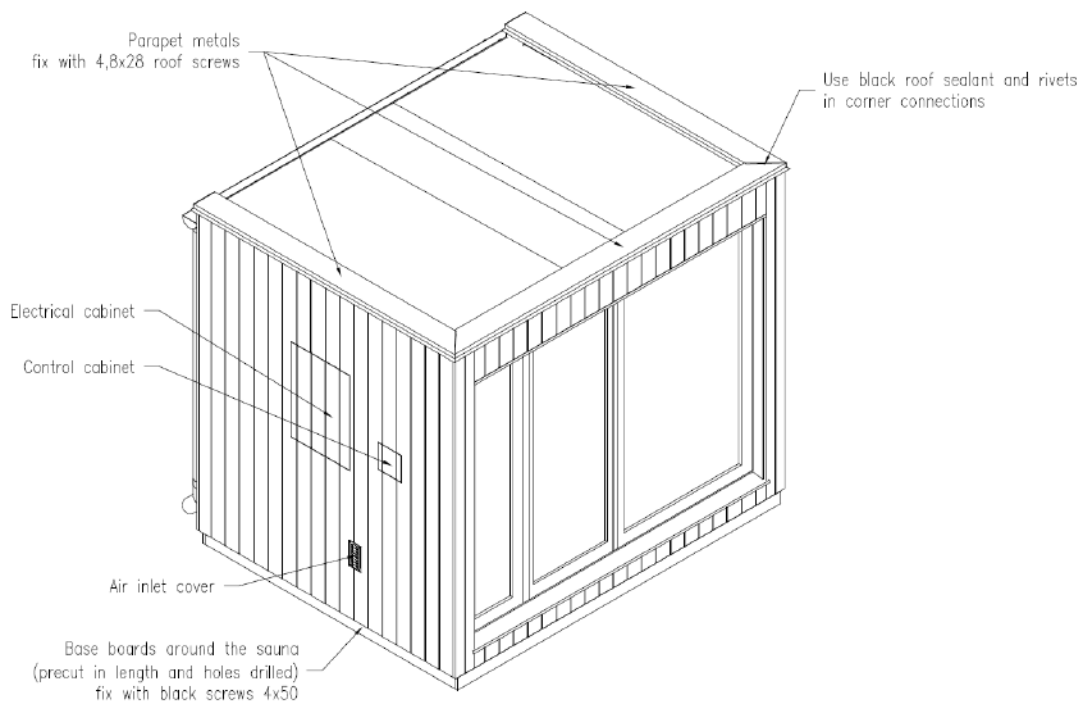
Final assembly shall be organized **by the client**.

Final assembly includes installing of the:

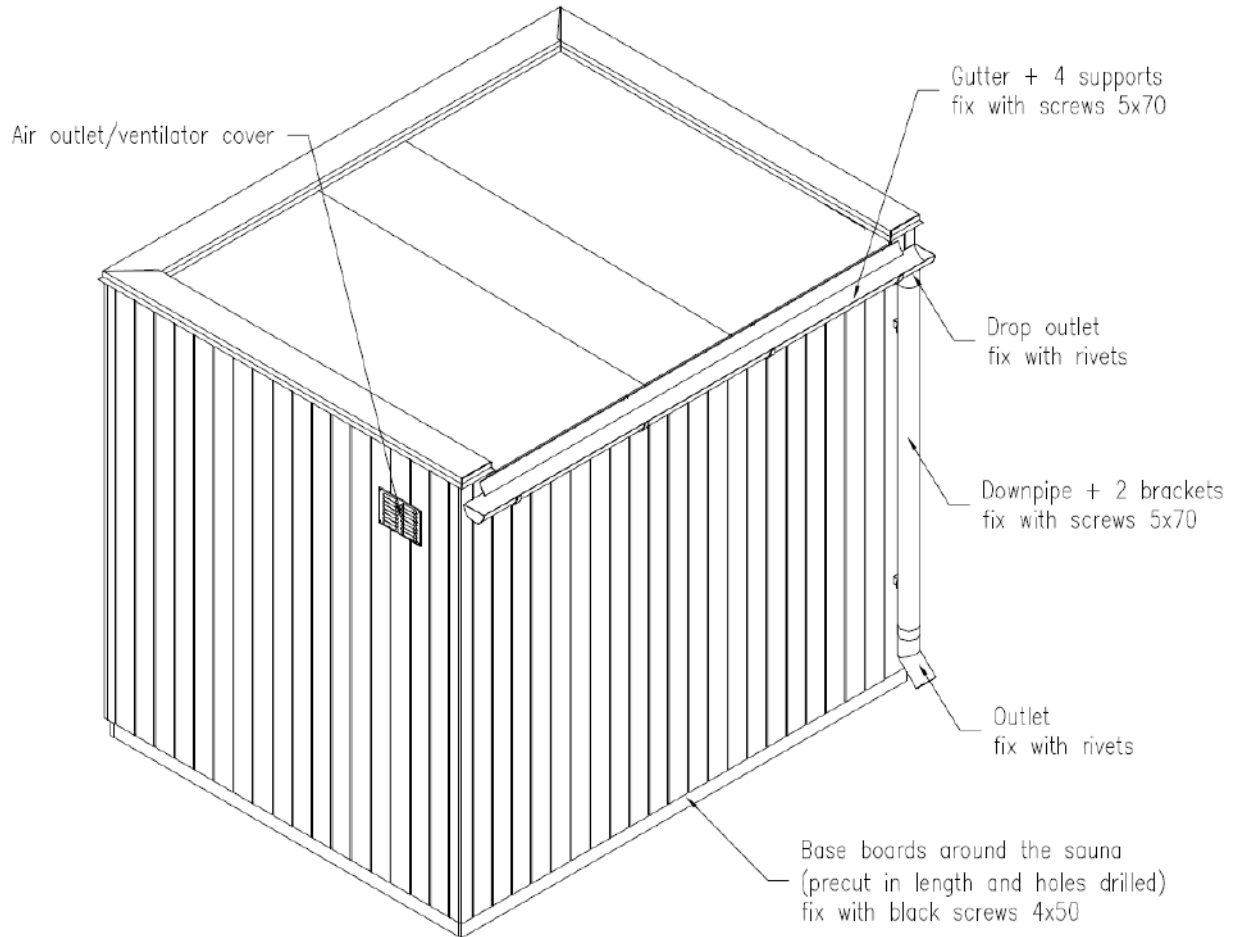
- Parapet metal
- Decorative base boards
- Outdoor lights 240V (for Sauna 1 and Sauna 2)
- Heater (+ control unit)
- Rainwater system
- Cables (*North America saunas*)
- Electrical cabinet (*North America saunas*)
- Ventilation device 240V (*North America saunas*)

#### 3.1 Final Assembly Instructions

**3.1.1 Parapet metals** must be installed to avoid weather damage of the sauna:



**3.1.2 Base boards** are for decorative purposes and easy to install. **Rainwater system** must be installed when sauna is exposed to rainwater.



#### **4. MAINTENANCE**

Maintenance of the outdoor cladding should be done once a year.

If sauna is used twice a week, then interior cladding, sauna bench and floor grid should be oiled once a year.

#### **5. IMPORTANT SAFETY REQUIREMENTS**

Sauna door must be closed during heating to avoid over-heating!



saunalife.com  
info@saunalife.com