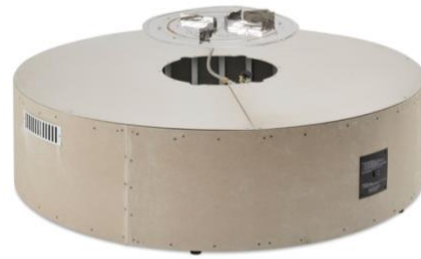


READY-TO-FINISH FIRE PIT KITS COLLECTION



RTF48S-K



RTF48CDNG-K

PERFECT FOR CUSTOMIZATION

Ready-to-finish fire pit enclosures are made from Hardiebacker® fiber cement board and G90 marine-grade galvanized steel framing. These can be finished on-site to match your landscaping, hardscaping, or exterior design with granite, stone, stucco, or Supercast Concrete tops. Save time on your project but still customize the look to fit the surrounding patio and landscaping design. A UL Listed Crystal Fire® Plus Burner is included to complete the stunning look.

FEATURES:

- Available in round, linear, and square shapes
- Made using G90 marine-grade galvanized steel framing and Hardiebacker® fiber cement boarding
- Fire pit opening enclosure is lined with aluminum
- Includes aluminum top, burner insert, two ventilation plates, and standard control panel
- Burner insert comes standard with clear glass gems – additional fire media may be necessary depending on enclosure opening
- Control panel will either have turn dial or switch depending on ignition type
- Other [DSI controls](#), timers, e-stops, and fire media sold separately
- Can be used for liquid propane or natural gas installations – hard-pipe installation recommended
- Most ship in one piece with drop-ship option available
- Most do not fit 20 lb. liquid propane tank in base
- UL Listed, Made in USA
- Contact sales@outdoorrooms.com for information on custom sizes



PRODUCT INFORMATION:

Linear:

ITEM	ITEM CODE	BURNER INCLUDED/ BTUs	DIMENSIONS	MEDIA QTY	RETAIL PRICE
Manual Ignition					
48" x 36" RTF Kit	RTF48L-K	BI737/80,000	48" L x 36" W x 18" H		\$1999
48" x 36" Tall RTF Kit*	RTF48TL-K	BI737/80,000	48" L x 36" W x 22" H		\$2199
60" x 36" RTF Kit	RTF60L-K	BI737/80,000	60" L x 36" W x 18" H		\$2499
72" x 36" RTF Kit	RTF72L-K	BI757/100,000	72" L x 36" W x 18" H		\$2699
Direct Spark Ignition					
48" x 36" RTF Kit	RTF48LDNG-K**	BI737DSING/80,000	48" L x 36" W x 18" H		\$3339
48" x 36" Tall RTF Kit*	RTF48TLDLP-K/ RTF48TLDNG-K	BI737DSI(LP/NG)/80,000	48" L x 36" W x 22" H		\$3539
60" x 36" RTF Kit	RTF60LDNG-K**	BI737DSING/80,000	60" L x 36" W x 18" H		\$3839
60" x 36" Tall RTF Kit*	RTF60TLDLP-K/ RTF60TLDNG-K	BI737DSI(LP/NG)/80,000	60" L x 36" W x 22" H		\$3,939
72" x 36" RTF Kit	RTF72LDNG-K**	BI757DSING/100,000	72" L x 36" W x 18" H		\$4039

Round:

ITEM	ITEM CODE	BURNER INCLUDED/ BTUs	DIMENSIONS	MEDIA QTY	RETAIL PRICE
Manual Ignition					
48" Round RTF Kit	RTF48C-K	BI28/105,000	48" L x 48" W x 18" H		\$2899
Direct Spark Ignition					
48" Round RTF Kit	RTF48CDNG-K**	BI28DSING/100,000	48" L x 48" W x 18" H		\$4239
60" Round RTF Kit	RTF60CDNG-K**	BI28DSING/100,000	60" L x 60" W x 18" H		\$4599

Square:

ITEM	ITEM CODE	BURNER INCLUDED/ BTUs	DIMENSIONS	MEDIA QTY	RETAIL PRICE
Manual Ignition					
48" x 48" RTF Kit	RTF48S-K	BI28/105,000	48" L x 48" W x 18" H		\$1999
Direct Spark Ignition					
48" x 48" RTF Kit	RTF48SDNG-K**	BI28DSING/100,000	48" L x 48" W x 18" H		\$3399
60" x 60" RTF Kit	RTF60SDNG-K**	BI28DSING/100,000	60" L x 60" W x 18" H		\$3699

*Fits 20 lb. liquid propane tank in base.

**Liquid propane option available upon request.