



## Kiln Stand Assembly Instructions For Dyna-Lift Ready Circular Ceramic Kilns

For Dyna-Lift Ready  
Evenheat Circular Ceramic Kilns

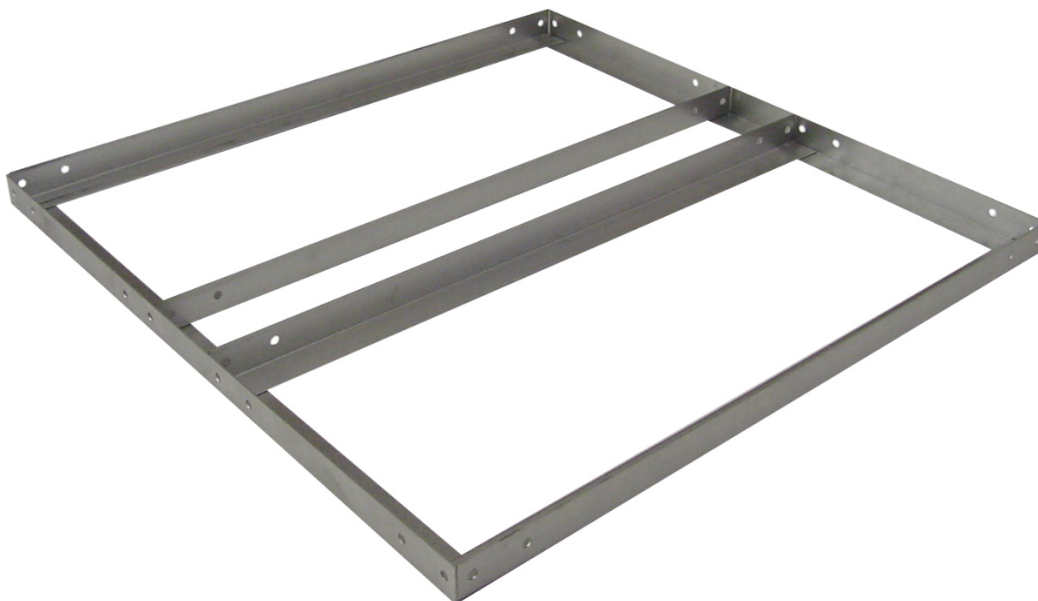
### *Dyna-Lift Ready*

As of Spring, 2007 Evenheat is supplying many kiln models as "Dyna-Lift Ready". The Dyna-Lift is an optional lid lift assisting device that connects directly to your new kiln stand. The Dyna-Lift reduces the force necessary to operate your kiln lid. It does so with ease and grace and without damaging your kiln in any way.

If you have purchased a Dyna-Lift with your new Evenheat, great. You're going to enjoy the easy lifting it provides. If you have yet to purchase a Dyna-Lift please know that many new Evenheat Ceramic kilns will be ready to accept it when you do. To find out more visit our website at [www.evenheat-kiln.com](http://www.evenheat-kiln.com)

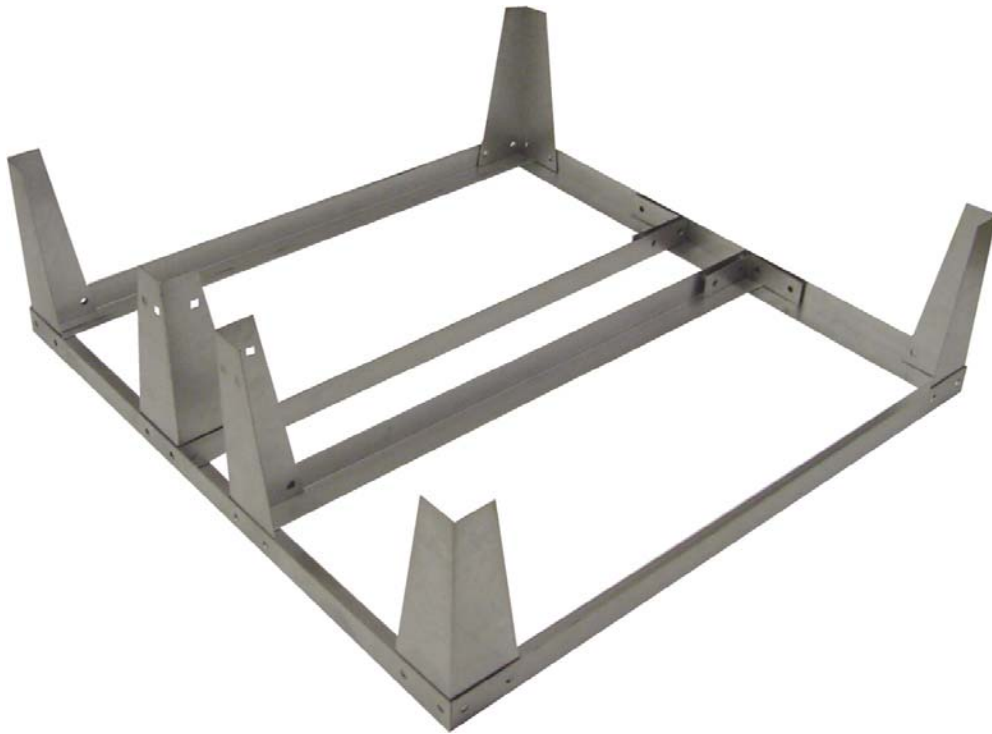
Step 1:

Place all frame angles as shown below. Note that the frame angles with 8 holes are placed opposite of each other.



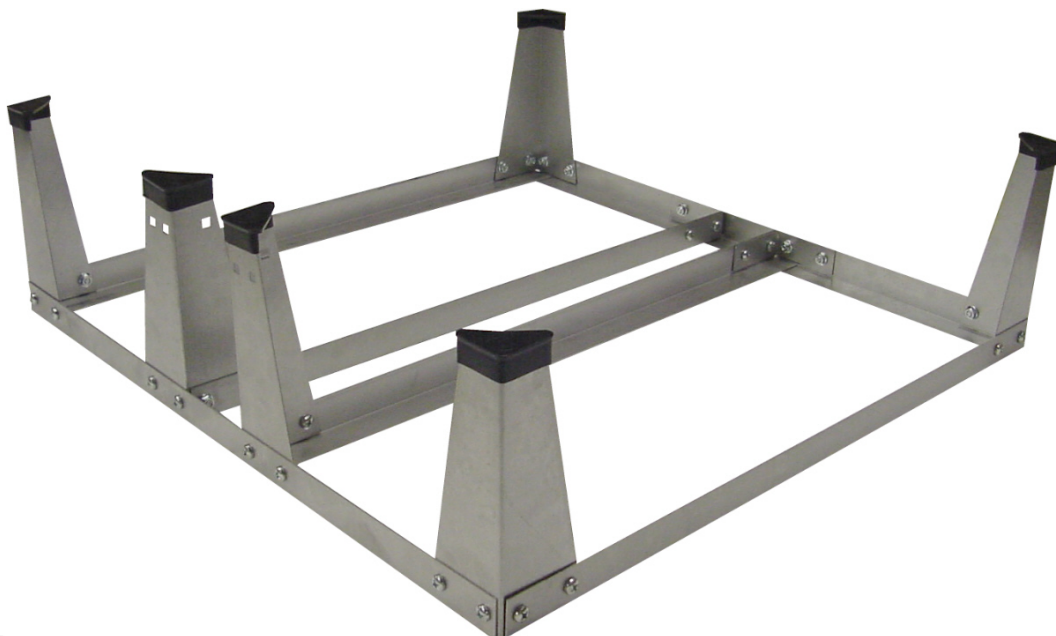
Step 2:

Place all stand legs as shown below. Please note that the 2 Dyna-Lift Ready legs are placed, on one side, at the center positions. Position these 2 legs so the single square hole is to the inside of the frame. You will be connecting a truss to this point. Position the 2 "L" Brackets on one side at the center positions.



Step 3:

Once all stand legs are positioned, bolt the legs to the stand. Finger tighten at this point.



Step 4:

Install the trusses as shown below. Finger tighten and place plastic feet on each leg.



Step 5:

Turn the stand over and tighten all bolts.

You will have 4 nuts and bolts left over. Don't throw these away. These nuts and bolts are provided for attaching the Dyna-Lift lid lift assist. If you are not installing the Dyna-Lift we suggest that you insert these extra nuts and bolts to the 2 Dyna-Lift Ready legs. You will find 4 empty square holes in these Dyna-Lift ready legs. Place them here and tighten. If and when you install the Dyna-Lift this hardware will be there.



Front



## Step 6:

If you have purchased a Dyna-Lift this is the point where you'll attach it to the kiln stand. Please refer to the Dyna-Lift instructions for specific steps.

If you have not purchased a Dyna-Lift for your new kiln you may want to consider it. The Dyna-Lift lightens the force needed to operate the kiln lid. It does so with ease and grace and with no negative effects upon the kiln itself. Hallmarks of the design include no kiln body connection, single point lifting and emphasis on allowing the lid to act naturally. To find out more visit our website at [www.evenheat-kiln.com](http://www.evenheat-kiln.com)

## Step 7:

Position your stand where you want to place the kiln and place your kiln on the stand. Keep in mind to place your kiln on a non-combustible surface and at least 16' from any walls. Your kiln manual provides more information about kiln placement. Please read and follow these requirements.

