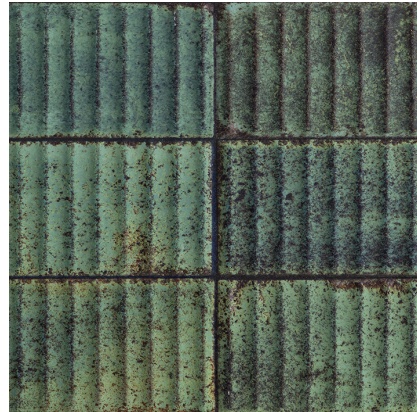


Model: DECO VETRI GREEN L 33,3X59,2(A)

Codes: 100324006

Water absorption: BIII - Revestimiento (10%≤E≤20%)



## DIMENSIONAL FEATURES

UNE-EN ISO 10545-2

Thickness	9.6 MM	+/-5%*
Width	332.5 MM	
Length	590 MM	
Length and width deviation	Below 0.15%	+/-0.3%*
Side straightness deviation	Below 0.15%	+/-0.3%*
Squareness deviation	Below 0.15%	+/-0.3%*
Surface flatness deviation	Below 0.15%	+/-0.4%*

\*ISO-13006:2018 UNE-EN 14411:2016

## MECHANICAL FEATURES

UNE-EN ISO 10545-4-6-7-11

Breaking strength	>600 N	>600N*
Modulus of rupture	>12 N/MM2	>=12N/mm2*
Crazing resistance	Resists 3 cycles	

\*ISO-13006:2018 UNE-EN 14411:2016

## HYGIENIC FEATURES

UNE-EN ISO 10545-13-14:1995

Chemical resistance	Class "A" for swimming pools and cleaning products (resists attack). Minimum Class "B" for acids and bases	B Min.*
Stain resistance	Class 5. Easy cleaning with water	3 Min.*

\*ISO-13006:2018 UNE-EN 14411:2016

## SCOPE OF USE

Technical code-1	Use on walls	
------------------	--------------	--

## PACKING

Sales units per box	1.577101 M2/BOX	
Sales units per pallet	75.700824 M2/PAL	
Sales units per unit	0.197138 M2/PIECE	

System Certification



Do not use cleaning agents containing hydrofluoric acid.

It is recommended to fix tiles with a minimum joint of 1,5 mm. Do not fix without joint.

For big sizes, it is recommended to fix with mortars containing polymeric additives and to use the double gluing technique.

Mosaic tiles must be grouted.

This document is only commercial and cannot be used as expert opinion, documentary evidence or in any legal or administrative procedure unless authorized by PORCELANOSA S.A.