

LUMINOR™

BLACKCOMB

RACK SYSTEMS



CONVENIENT ALL-IN-ONE UV/FILTER SYSTEMS

Models: LB4/5-Z1, LB4/5-Z2, LB4/5-Z12, LBH4/5-Z2, LBH4/5-Z12, LBH4/5-Z22

LUMINOR's new line of rack-mounted UV/filtration systems offer the convenience of an all-in-one package making installation a simple "in & out" connection.

Designed to effectively treat flow rates of 8 & 15 gpm, LUMINOR's rack-mounted UV's provide the required 5 micron pretreatment with the option of a full-flow, carbon filter to treat taste and odour. Installation of a UV system has never been easier with an innovative design that allows for feedwater to enter the filters from either the right or left side of the unit.

Based on LUMINOR's groundbreaking modular UV systems, the rack-mount UV's offer the flexibility of being "factory ready" to accept a UV Intensity Module in the future if so desired. The BLACKCOMB plug and play platform has the most advanced residential controller on the market with a colour screen user interface giving a multitude of screens displaying diagnostics, status, warnings and even QR codes for a link back to LUMINOR's website.*

Combine this with the capability to fully customize the colour screens with your own dealer information, or different language, and you can easily see how this integrated UV/filter system shines above all others (an optional Custom Dealer Programmer is required...contact factory for further information).*



Systems feature one-piece, 2-sump filter heads for a leak-free design

(On 2-sump units only)

- 120 psi operating pressure
- O-ring groove for fail-safe installation



Filter housing drain plug

- Silicon lubricant
- Pressure relief valve

Sample Screens



Product Features

- One-piece, 2-sump design for leak free operation, (pressure relief, wrench, and new integral hanging clip included with all systems)
- LED lamp countdown (4.1 variants)
- Controller with Lightlock™ technology for protected lamp sales (5.1 variants)
- Universal mounting configuration (left or right access)
- NSF component listed filtration cartridges (included with systems)
- "Future-proof" expandability port for future upgrades and options
- Axial flow, 316L stainless steel polished reactors, fully polished, designed & manufactured to ASME pressure vessel standards
- Reliable, industry proven, coated UV lamps, (9,000 hour life on LB4/5 series and 10,000 hour life on LBH4/5 series)
- Full customization available as an option (language, home screen, phone, QR codes, etc.)*



Optional Equipment Modules

UV Concierge

Available for WEB, iOS, and Android platforms providing live, dynamic feedback on all features and functions of your UV system.*



SHERPA Series Water Quality Monitor

Installs on LUMINOR LB5/LBH5 rack mounted UV systems and allows for remote monitoring of all major and minor alarms that take place on the main UV system. Three LED's visually display system functionality from up to 150' (46m) away.*



Custom Dealer Programmer

Customize your UV controller with your own company name, logo, website, QR code and contact information. Capture the lucrative replacement lamp market by creating a direct link back to your own website!*



UV Sensor Module

Allows the 254nm UV wavelength to be measured and displayed via the controller. The sensor plugs directly into the controller and is mounted in the sensor port located on all reactors. (see chart for part numbers)*



Solenoid Module

Used to power a remote normally closed solenoid valve (not included). Solenoid will close on lamp failure or when low UV conditions are detected by the sensor. Available in 110V. (MOD-SOL1) or 230V. (MOD-SOL2).*



TRV (temperature management relief valve)

TRV allows for a small amount of water to be physically released (dumped) from the UV unit to allow for cooling of the water. Used in applications of extended "no flow" conditions, or when the temperature of the treated water is of a critical nature.



Cooling Fan

To reduce water temperature inside the reactor through mechanics and convection without wasting any water. Runs independently and continuously. Comes with a compact modular power adapter with interchangeable AC clips that operates from 90-264V (47-63Hz.)



4-20mA Module

Used for signal transfer to a remote device such as a data logger or computer. Order MOD-420.*



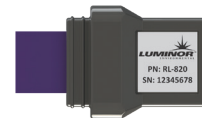
Remote Alarm (Dry Contact) Module

Used for signal transfer to a remote alarm or dry contacts. Order MOD-RAM.*



* Available on 5.1 / 6.1 systems only.

Guaranteed OEM Lamp Replacement with Lightlock™ technology



Tired of losing that lucrative replacement lamp sale to a cut-rate online marketer or to an inferior offshore manufacturer? Protect your replacement lamp revenue stream with LUMINOR's truly proprietary UV lamps with Lightlock™ technology. Maintain your lamp sales and more importantly your lamp margin all while protecting the integrity of the product and its performance.

BLACKCOMB - Equipment Specifications

BLACKCOMB RACK-MOUNT UV SYSTEMS						
Model	LB4-Z1 LB5-Z1	LB4-Z2 LB5-Z2	LB4-Z12 LB5-Z12	LBH4-Z2 LBH5-Z2	LBH4-Z12 LBH5-Z12	LBH4-Z22 LBH5-Z22
Flow Rate (30mJ/cm ² @ 95% UVT)	8.0 GPM			15.0 GPM		
	30.3 lpm			56.8 lpm		
	1.82 m ³ /hr			3.4 m ³ /hr		
1st Filter Housing	5 micron sediment LC-105	5 micron sediment LC-205	5 micron sediment LC-105	5 micron sediment LC-205	5 micron sediment LC-105	5 micron sediment LC-205
2nd Filter Housing	N/A	N/A	High-capacity carbon LC-20C	N/A	High-capacity carbon LC-20C	High-capacity carbon LC-20C
Port Size	1" MNPT					
Electrical	90-265V/50-60Hz.					
Plug Type	American, Nema 5-15, no suffix (i.e. LB5-Z1) European, CEE 7/7, "2" suffix (i.e. LB5-Z1-2) British Standard, BS 1363, "3" suffix (i.e. LB5-Z1-3) Australian/New Zealand, AS/NZ 3112, "4" suffix (i.e. LB5-Z1-4)					
Lamp Watts	20 (standard-output lamp)			45 (high-output lamp)		
Power (Watts)	23 (21 @ 230V.)			57 (48 @ 230V.)		
Max Current (amps)	1					
Chamber Material	Polished 316L stainless steel, A249 pressure rated tubing					
Reactor Dimensions	3.5 x 20.0" (8.9 x 50.8 cm)					
Controller Dimensions	17.2 x 9.2 x 10.2 cm (6.8 x 3.6 x 4")			21.7 x 10.8 x 10.2 cm (8.6 x 4.2 x 4")		
Operating Pressure	0.7-8.3 bar (10-120 psi)					
Operating Water Temperature	2-40° C (36-104° F)					
Replacement Lamp	RL-420			RL-420HO		
Replacement Sleeve	RQ-420					
UV Monitor	Optional (requires additional UV sensor module) (RS-B3.5 on LB5 units & RSHO-B3.5 on LBH5 units)					
Solenoid Output	YES (but requires optional solenoid module) (MOD-SOL)					
Dry Contacts	YES (but requires optional remote alarm module) (MOD-RAM)					
4-20mA Output	YES (but requires optional 4-20mA module) (MOD-420)					
Lamp Change Reminder (audible & visual)	YES					
Lamp Out Indicator (audible & visual)	YES					
Shipping Weight	10.8 kg. (23.8 lbs.)	12.2 kg. (26.8 lbs.)	19.0 kg. (41.8 lbs.)	11.8 kg. (26.0 lbs.)	18.6 kg. (41.0 lbs.)	20.9 kg. (46.0 lbs.)

Note: All systems available with no cartridge(s). Add "-NC" before plug type (i.e. LB5-Z1-NC-4).

Manufacturer's Warranty

REACTORS - Ten (10) year Limited Warranty
ELECTRONICS - Three (3) year Limited Warranty
UV LAMPS - One (1) year Limited Warranty
QUARTZ SLEEVES - One (1) year Limited Warranty



See website for LUMINOR's complete warranty document including conditions and exclusions.

LUMINOR Environmental Inc.
 80 Southgate Drive, Unit 4
 Guelph, Ontario, CANADA
 N1G 4P5

P: (519) 837-3800
 TF: (855) 837-3801
 F: (519) 837-3808
 e-mail: info@luminoruv.com
 web: www.luminoruv.com



EPA Establishment
 #088776-CAN-001



Carbon
 Neutral



Water
 Quality
 ASSOCIATION



LuminorUV



LuminorUV