

# Krypton-GO™

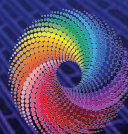
## Ceiling Disinfection\* Lighting for Public Transportation



## Installation Manual

BU12W12V Series

\*All references to "disinfection" are referring generally to reduction of bioburden and are not intended to refer to any specific definition of the term as may be used for other purposes by the U.S. Food and Drug Administration or the U.S. Environmental Protection Agency. The disinfection technology as incorporated in Far UV Technologies products is not intended for use in the cure, mitigation or prevention of disease and is not certified or approved for use as or for the disinfection of medical devices by the FDA. Bioburden reduction is a function of fixture run time, distance to the UV light source, air flow, room size, shadow areas and/or other factors, and the level of reduction will vary within a specific space.



FAR UV  
TECHNOLOGIES

# KRYPTON-GO INSTALLATION

## Krypton-GO Ceiling Disinfection\* Lighting BU12W12V Series

**Note:** Installation of this unit must be performed by a Qualified Person as determined by the National Electrical Code. The electrical circuit should be powered off for installation. If the circuit cannot be shut off, safety glasses are required. Do not reverse polarity. When installed to lighting circuits controlled with dimmer switches, the dimmer switches must be turned up for operation of Krypton disinfection\* lights. Improper installation will void the warranty.

**Before You Begin:** Carefully unpack your ceiling mount Krypton-GO disinfection\* lighting system. Ensure that all components, including the lamp head, additional wiring, and wire nuts are present and intact. Included components may vary depending on the specifications of your order and application.

### Inside the Box

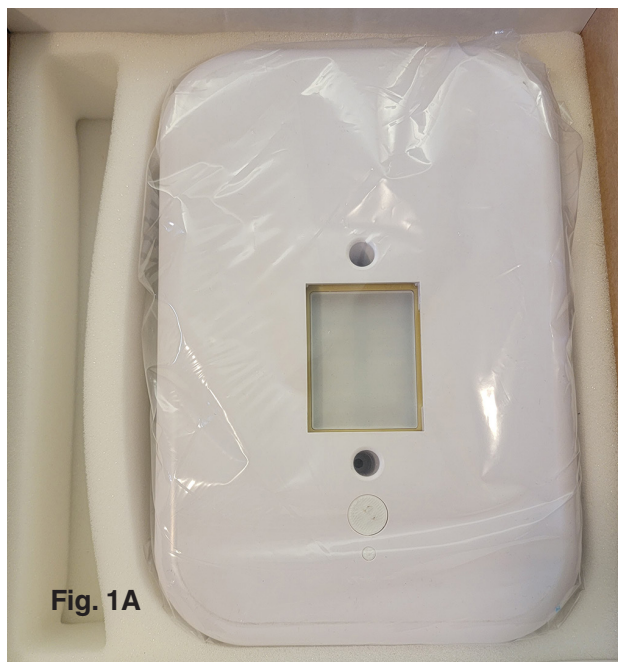


Figure 1A Krypton-GO Light Packaging

### Components



Figure 1B Components for installation including:  
Krypton lamp with 40ft wire

# KRYPTON-GO INSTALLATION



Figure 3  
Standard screw-mounted installation

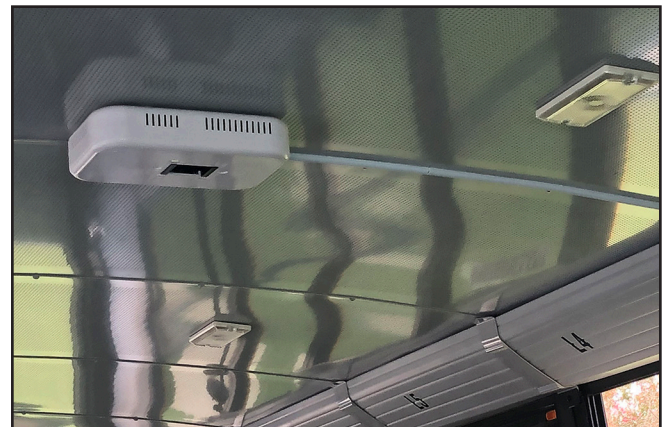
Figure 2 Items recommended for installation  
Velcro, Wire & Cord hiding system and No: 8-18  
Self-drilling screws 3/4" long (round head)

## 1. Mount unit at desired location using approved method.

Your ceiling mount Krypton-GO disinfection\* lighting system can be mounted using the appropriate screws through the two mounting holes (Figure 4).

## 2. Connect unit to 12V keyed battery source using approved method.

3. A fuse is required between the 12V source and the fixture



Final Installation

# KRYPTON-GO INSTALLATION



## Operation

**The Krypton unit once assembled is simple to operate.**

This unit is programmed to operate continuously or cycle when on. Leaving the light off in unoccupied rooms can extend the product life. The Krypton unit will provide 222nm radiation limited by ACGIH exposure limit recommendations for 222nm radiation.



## Caution

**As with any other light fixture:**

- Do not expose the Krypton unit to water or chemicals (including fogging or misters)
- Do not touch the Krypton lamp while on

Krypton disinfection\* lighting predominantly emits 222nm wavelength Far UV light. This Krypton device meets the maximum exposure guidelines as set by or ACGIH when used as described in this installation and operation guide.



## Warranty

The limited warranty set forth below is given by Far UV Technologies, Inc. and applies to the Far UV Technologies fixture only. The product when delivered to you in new condition in its original container is warranted against defects in materials and workmanship under normal use and service for a period of 3 years from the date of purchase. This does not include the bulb itself. If the product is found to be defective during this warranty period Far UV Technologies will repair or exchange the unit for a new or refurbished unit as determined by Far UV Technologies.