

# American Ultraviolet

## PENDANT 360

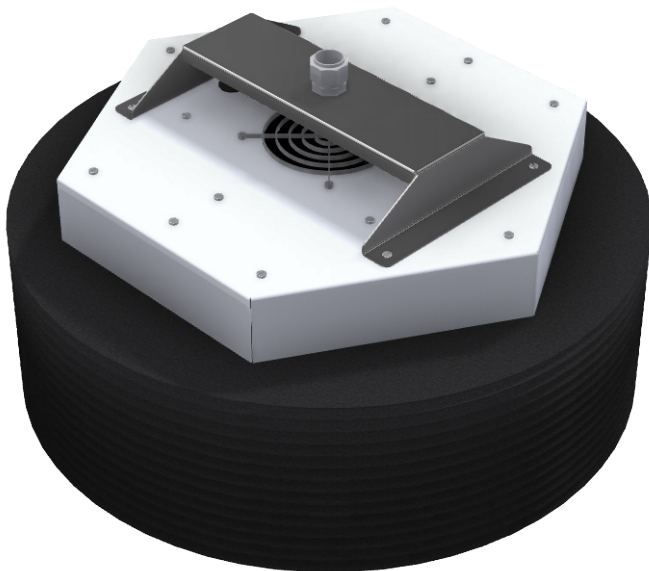
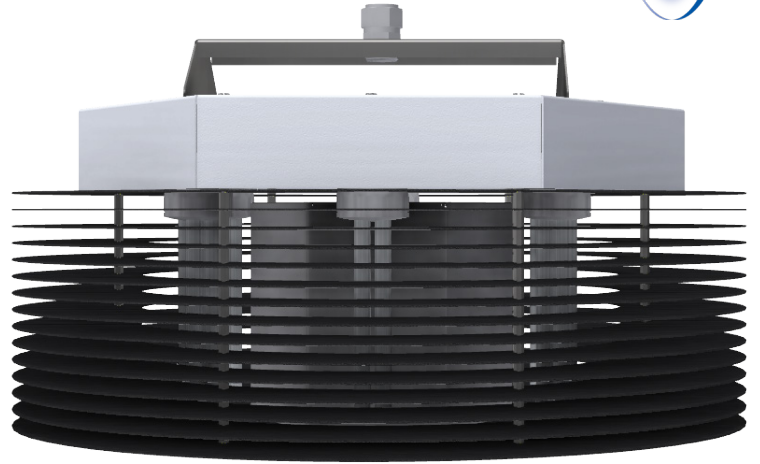
model: STBF-12



Upper Room Germicidal Ultraviolet fixtures have been successfully used for almost 100 years to help mitigate the spread of airborne microbes. Properly designed and applied fixtures can help reduce person-to-person spread of germs - particularly in densely populated open spaces.

Providing 360° Upper Room Germicidal UV, the Pendant 360 series is ideal in spaces where wall-mounted upper room GUV fixtures may not be adequate or efficient to cover the space.

The STBF-12 model is designed for applications such as classrooms, offices and conference rooms where an aesthetically pleasing design and maximal coverage per fixture are equally important.



Using an array of UV-C lamps mounted around a central reflector and incorporating a quiet fan and louvered exterior, Pendant 360 units provide maximum UV-C intensity into the upper air of a room while confining the UV-C energy to the unoccupied space above 7.5-feet from the floor (when installed according to design specifications).

With a single mount point, the STBF-12 offers complete flexibility in mounting a single unit or an array of units to cover larger spaces. These units are designed to mount to a standard ceiling electrical box - just like a typical ceiling fan or pendant-style light fixture.

### Technical Specifications

Dimensions	22" diameter x 13" high
Weight (approximate)	20lbs. (9kg)
Lamps	6 x 25Watt self-ballasted UV-C
Electrical Requirement	120V/60Hz/5A
Area Coverage per STBF-12 Fixture	Varies based on ceiling height and mounting height of fixture. Projected at 700-800 ft <sup>2</sup> under ideal conditions.

**Note: Fixture design and specifications subject to change in production, pending final product testing. Consult factory prior to ordering for current specifications**

### American Ultraviolet

212 S. Mt. Zion Rd., Lebanon, IN 46052, USA | (800) 288-9288 | [www.americanultraviolet.com](http://www.americanultraviolet.com)

US EPA Establishment # 89568-IN-001

