

## Table of Contents

Top-Rated Charity . . . . .	2
Letter from the Co-Chairs . . . . .	3
Mission & Description . . . . .	5
Forever Young Foundation . . . . .	7
Forever Young Initiatives. . . . .	9
FYF   NPI and Engage Now Africa. . . . .	11
Forever Young Zones . . . . .	12
8 to 80 Zone and Sophie’s Place. . . . .	13
Family of Charities . . . . .	14
Spotlight - Music Therapy . . . . .	15
Organization & Financial Statements. . . . .	17
Fundraising Events . . . . .	19
Statement of Activities . . . . .	21
Friends of Forever Young . . . . .	22 - 24



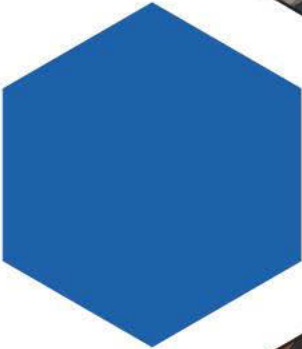
**Best in:**  
**Children & Family Services**  
**FOREVER YOUNG FOUNDATION**

11 Top-Rated Charities  
That Changed The World In 2014  
The Huffington Post



**CHARITY  
NAVIGATOR**

★★★★  
Four Star Charity



## Letter from the Co-Chairs

Collaboration with our partners and sponsors has always been integral to Forever Young Foundation's success. Our team continues to engage companies, nonprofits, and others who are passionate about health and educational initiatives in the communities we serve.

As our efforts and outreach continue to grow, the support offered by our friends has become increasingly valuable.

We could not be successful without you. We appreciate the services you provide and deeply value the generous contributions you make each year to sustain our Forever Young Foundation family of charities.

No dream is too big when it comes to helping children in need. As we look forward to 2015, we invite you to share your ideas--to help us become better, maximize our strengths, and positively impact more young lives.

Thank you!

Barb & Steve Young



**Mission & Description**

Founded in 1993 by NFL Hall of Famer Steve Young, Forever Young Foundation is a nonprofit 501(c)(3) organization focused on

**passing on  
HOPE and  
RESOURCES for the  
DEVELOPMENT,  
STRENGTH, and  
EDUCATION of  
CHILDREN.**





## Forever Young Foundation

Founded in 1993 by Hall of Famer and Super Bowl MVP Steve Young, Forever Young Foundation is a nonprofit, 501(c)(3) organization that serves children facing significant physical, emotional, and financial challenges. Funds raised further our efforts to provide academic, athletic, and therapeutic opportunities currently unavailable to these children.

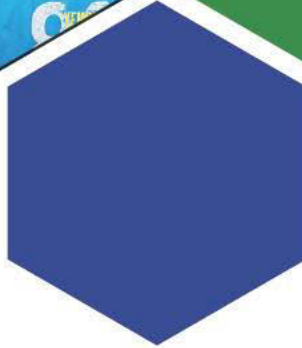
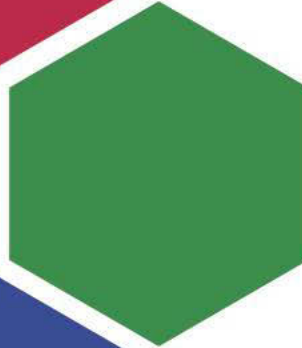
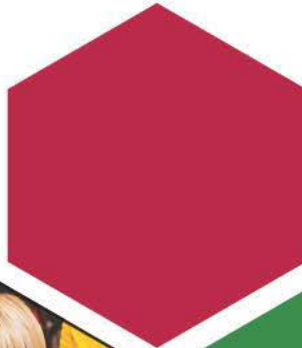
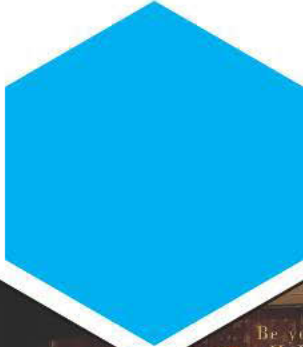
Forever Young Foundation's primary development focus continues to be in Northern California, Arizona, Utah, and Africa. The Foundation's efforts include the creation of Forever Young Zones and 8 to 80 Zones, which provide technology and multimedia labs as well as state-of-the-art interactive play areas in children's hospitals. Sophie's Place creates music therapy facilities in children's hospitals. Through music and the playing of instruments, these rooms assist in treatment and care for young people suffering from chronic illness, brain trauma, or serious injury.







## Forever Young Initiatives





## Nonprofit Institute



Forever Young Foundation has partnered with the Arbinger Institute, a leader in management training and team building, to provide a yearlong training for nonprofit leaders. Participants learn how to develop, implement, and update a one-year operating plan and three-year long range strategic business plan; hold themselves accountable to their contributors; and keep board members, staff, and volunteers focused on achieving results. Through underwriting from Forever Young Foundation, private donors, and corporations, this training is offered at minimal cost to nonprofit leaders seeking to ensure the sustainability and growth of their organizations for generations to come. Since its inception in 2010, over 125 nonprofits have participated, including 28 in 2014. We're looking forward to training a record number of nonprofits in 2015.



## Engage Now Africa



Under the direction of our friends Bob and Lynette Gay, Forever Young Foundation continues to enhance the lives of children and families throughout Africa. This ambitious endeavor, entitled Engage Now Africa, is currently operating in the countries of Ethiopia, Ghana, Namibia, and Sierra Leone. We utilize local leaders who understand the challenges faced in their local communities, and who are best equipped to help determine and manage effective solutions.

In just a few short years, Engage Now Africa has established a network of successful schools, a model microcredit lending network, student-loan programs, health clinics, clean-water projects, and much more. Together we are making a difference . . . one village at a time.

ENGAGE NOW



AFRICA

## Multimedia Zones

Multimedia Forever Young Zones provide a state-of-the-art radio, TV, film, and design studio, as well as a professional-quality recording studio with an isolated vocal booth and digital audio mixing. This multimedia equipment and programming enables youth to develop diverse, high-level communication skills, while training on professional equipment. The goal of these Zones is to put technological tools into the hands of creative young people, allowing them to explore and prepare for careers in media and design while developing practical production and copy through their own artistic expression.



## Hospital Zones

Hospital Forever Young Zones are recreational therapy rooms created to provide tools for exercising the imagination of seriously ill children who face emotional and physical challenges. Forever Young Foundation has three Zones in the following children's hospitals: Primary Children's Hospital in Salt Lake City, Utah; Lucile Packard Children's Hospital in Palo Alto, California; and Cardon Children's Medical Center in Mesa, Arizona. These Zones provide a safe place where staff can build supportive relationships with children and teens to help them in their recovery processes. They provide a sanctuary where children working through serious illness and rigorous treatments can relax, play, and just be children.





## 8 to 80 Zones

The 8 to 80 Zones are collaborations between Steve Young and Jerry Rice that provide youth living in underserved communities the skills to pursue careers in technology and media. The multimedia 8 to 80 Zones not only allow for artistic expression, but also afford students the opportunity to gain training on industry-standard equipment and software in the areas of television, radio, voice recording, and graphic design. The uniqueness of the 8 to 80 Zone provides additional fundraising opportunities for the centers in which they are located. Steve and Jerry are looking forward to building more 8 to 80 Zones in the upcoming year.



## Sophie's Place



In 2013, Primary Children's Hospital opened the first Sophie's Place, an innovative music therapy space established in loving memory of singer, songwriter and friend, Sophie Barton. This special place provides evidence-based music therapy treatment for young people suffering from pain, chronic illness, and serious injury. While most people know music has an extraordinary power to bring comfort and peace to the soul, clinical studies have proven that music therapy offers noninvasive treatment, providing beneficial effects on hospital patients. Since opening day, physician requests and prescriptions for music therapy in Sophie's Place have grown exponentially at the hospital.

In 2015, we will break ground in California and Arizona--adding two more Sophie's Place spaces in children's hospitals.

*Music Changes Everything*

## Family of Charities

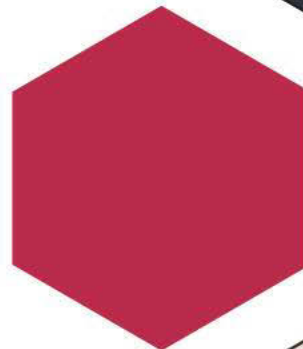
Programs listed below include organizations we have supported in 2014. These charities exemplify the mission of the Foundation by promoting the development, strength, and education of children.

### 8 to 80 Zone

East Palo Alto, CA  
 Hawaiian Islands – Mobile Unit  
 Honolulu, HI  
 Mesa, AZ

America's Freedom Foundation  
 American Indian Services  
 Anasazi Foundation  
 Arizona Women's Board  
 Banner Health Foundation  
 Camp Rainbow Gold  
 Camp Soaring Eagle  
 Center for the Advancement of Leadership  
 Charity Beyond Borders  
 Charity Vision International  
 Chip in 4 Kids  
 Christmas Box House  
 Cystic Fibrosis Foundation  
 Empower Playgrounds  
 Engage Now Africa  
 Ensign College of Public Health  
 Equal Education For All  
 Equity International School  
 Fairfield County Sports Commission  
 Fit Kids  
 Forever Young International School  
 Forever Young Nonprofit Institute  
 Friday's Kids  
 Friends for Football  
 Golden Sunbeam Montessori School  
 Jimmer Fredette Family Foundation  
 Johnny Miller Junior Golf Foundation  
 Kensington Capital Children's Fund  
 Kwamie Lassiter Foundation

Magical Bridge Playground  
 Neighborhood Ministries  
 New Hope Foundation  
 New Life Foundation  
 NFL Youth Education Towns  
 Atlanta  
 Ft. Lauderdale  
 Honolulu  
 Houston  
 Los Angeles  
 Miami  
 New Orleans  
 Phoenix  
 San Diego  
 Tampa  
 Rawhide Boy's Ranch  
 Right to Play  
 Safe & Secure  
 Shun the Sun Foundation  
 Sky's The Limit  
 Sojourner Center  
 Solid Rock Foundation  
 Sophie's Place  
 Cardon Children's Medical Center  
 Primary Children's Hospital  
 Sutter Children's Center  
 Spina Bifida Association of Arizona  
 Stanford University Medical Center  
 Swift Charities for Children  
 The Taylor Family Foundation  
 The Tech Museum of Innovation  
 University of Utah Music Program  
 Utah Sports Commission  
 Wasatch Adaptive Sports



## SPOTLIGHT - Sophie's Place Music Therapy Van

The Sophie's Place music therapy van is "rolling" in the Bay Area, thanks to our friends at The Taylor Family Foundation. This mobile unit allows music therapists to provide treatment for children and families attending TTF summer camps and seven contracted hospitals. TTF is also working to develop partnerships with long-term healthcare facilities lacking the funds to support specialized music therapy programming on site. Here is what one of our partners had to say about the program--

"Music therapy has been a wonderful addition to our pediatric care here at John Muir! The patients, families, and staff alike have nothing but positive things to say about it. From my perspective as a Child Life Specialist, it is the perfect complement to my services. The MT works with patients on alternative coping strategies, expressing emotions related to admission or medical experiences, and provides a welcome distraction from pain and anxiety. Allowing pediatric patients the choice to have music therapy and what the session looks like is so empowering in and of itself. Some of our patients who have multiple admissions look forward to Fridays or "music therapy days" around here and ask for our MT by name. It is always so wonderful to see children strumming a guitar or creating lyrics to a song about their unique experience in the hospital. Music is such a comfortable modality for children to work with, and they just blossom when the MT's partner in their care."

-Shana Hammers, Certified Child Life Specialist, John Muir Hospital Pediatrics







## Organization & Financial Statements



### Board of Directors

**Steve and Barb Young** • Founder and Co-Chairs of the Board • Palo Alto, CA

**Edward Bryant, Jr.** • Vice President, National Marketing and Sales Director • Pacific Global Investment Management Co. • Santa Monica, CA

**Gayla Compton** • Managing Director • Maverick Foundation • Philanthropist and Entrepreneur • Saratoga, CA

**Robert Gay** • Co-Founder • Huntsman Gay Global Capital • Salt Lake City, UT

**Richard Lawson** • Managing Partner, Co-Founder • HGGC • Palo Alto, CA

### Directors Emeritus

**Danny Ainge** • President • Boston Celtics • Boston, MA

**Michael Levinthal** • Independent Venture Capitalist • Park City, UT

**Mike Murray** • Chairman of the Board • Unitus • Redmond, WA

**Stephen Pagliuca** • Managing Director • Bain Capital, Inc. • Boston, MA

### Staff

**Sterling Tanner** • President, Executive Director • Mesa, AZ

**Michelle Knox** • Marketing Director • Mesa, AZ

**Stephanie Nath** • Director of Events and Programs • Wichita, KS

# 2014 Steve Young Mountain Classic HOLE-IN-ONE WINNER Doug Quinones

Special Thanks to Doug Smith Auto



## Fundraising Events

2014 proved to be our best year yet for total revenue raised through our events. We express gratitude to the outstanding sponsors, celebrities, and volunteers that give of their time and resources to make these events successful. Countless children continue to be blessed through your participation and generosity.

Our four signature events continue to be a fun and integral part of what we do at Forever Young Foundation. In addition to raising critical funds, the events also give us the opportunity to showcase the work we are accomplishing with our wonderful partners.

Event: **Steve Young Ski Classic**  
 Location: Snowbird, Utah  
 Title Sponsor: **Swift Charities for Children**  
 Revenue: \$337,958  
 Beneficiaries: Forever Young Foundation, Wasatch Adaptive Sports



Event: **Steve Young Desert Classic**  
 Location: Scottsdale, Arizona  
 Title Sponsor: **Bain Capital**  
 Revenue: \$167,667  
 Beneficiaries: Forever Young Foundation, Anasazi Foundation



Event: **Steve Young Mountain Classic**  
 Co-Host: Johnny Miller  
 Location: Park City, Utah  
 Title Sponsor: **HGGC**  
 Revenue: \$314,338  
 Beneficiaries: Forever Young Foundation, Sophie's Place



Event: **Steve Young/Jerry Rice Bay Area Classic**  
 Location: San Martin, California  
 Primary Sponsor: **HGGC**  
 Revenue: \$441,450  
 Beneficiaries: Forever Young Foundation, The Tech Museum of Innovation

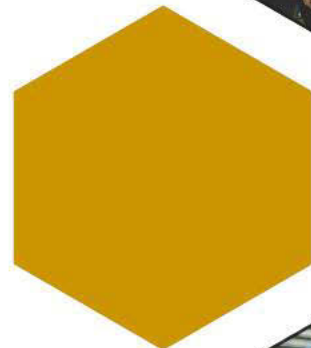


Total Event Revenue: \$1,261,413  
 Event Expenses: \$ 218,729  
 Net Event Revenue: \$1,042,684



## Statement of Activities

	Jan - Dec 14	Jan - Dec 13
Beginning Fund Balance	\$3,048,380	2,749,712
<b>Income</b>		
Total Donations	\$1,871,948	\$1,864,255
Net Event Income	\$1,042,684	\$962,153
Total Other Income	\$24,943	\$85,668
<b>Total Income</b>	<b>\$2,939,575</b>	<b>\$2,912,076</b>
<b>Expense</b>		
<b>Support Services</b>		
Total Fundraising	\$53,639	\$53,355
Total Management & General	\$108,197	\$107,622
Total Support Services	\$161,836	\$160,977
<b>Program Services</b>		
Total Foundation Grants	\$2,032,885	\$2,052,329
Other Program Services	\$402,396	\$400,102
Total Program Services	\$2,435,281	\$2,452,431
<b>Total Expense</b>	<b>\$2,597,117</b>	<b>\$2,613,408</b>
<b>Net Income</b>	<b>\$342,458</b>	<b>\$298,668</b>
<b>Ending Fund Balance</b>	<b>\$3,390,838</b>	<b>\$3,048,380</b>



Audited financial statements are available upon request from:  
 Hansen, Bradshaw, Malmrose & Erickson  
 559 West 500 South  
 Bountiful, UT 84010

## Friends of Forever Young

### Hall of Fame Circle

#### \$250,000 and up

Compton Family Trust  
Kensington Capital Children's Fund  
Kevin & Gayla Compton  
Robert & Lynette Gay  
Steve & Barb Young

### Chairman's Circle

#### \$100,000 - \$249,999

HGGC  
Jerry & Vickie Moyes  
Snowbird Ski & Summer Resort

### President's Circle

#### \$50,000 - \$99,999

Bain Capital Children's Charity  
David Barber  
Ernest D. Willmore  
Henry & Renee Schwendiman  
James & Andrea Clarke  
Jeffrey Simmons  
Mark & Tami Schwendiman  
Nutraceutical  
Rich & Krista Haws  
Wilford Cardon Family

### Benefactor

#### \$25,000 - \$49,999

American Airlines  
Asset Management Corporation  
Byrne Family Foundation  
CordeValle Resort

Cumulus Media, Inc.  
Dana Evan Family  
Delta Airlines  
Frank & Denise Quattrone  
GE Antares Capital  
GE Capital Corporation  
Intuit  
Kirkland & Ellis Foundation  
Michael & Patti Klayko  
National Bank of Canada  
Pacific Gas & Electric Company  
Phillips-Van Heusen Foundation  
Serena Software  
Stifel, Nicolaus & Company  
Swift Transportation  
The Chambers Family Foundation  
William J.B. Brady Charitable Trust

### Patron

#### \$10,000 - \$24,999

ABM Onsite Services  
Birdsall Interactive  
Brian C. Johnson  
BYU Athletics  
Champion Charities  
Crystal Springs Foundation  
David & Emily Breach  
Daynes Music  
Doug Smith Autoplex  
Dwight & Suzanne Haldan Family  
Dynastar  
Enlighten  
Ernst & Young - Los Angeles  
Gameday Creative Ventures  
Ganem Jewelers  
Ghirardelli Chocolate Company  
Gregory & Paula Benson

Joseph & Linda Bronson  
KPMG Silicon Valley  
Les & Sheralyn Brown  
Levi Strauss & Co.  
Mark Reichman Family  
Merrill Lynch  
Michael Levinthal Family  
Mountain States Networking  
NFL Charities  
Paul & Sandra Edgerley  
PricewaterhouseCoopers  
Red Ledges Golf Club  
Rich & Holly Lawson Family  
Richard & Nancy Marriott Foundation  
RJ Hutton Charitable Trust  
Stratton D. Sclavos  
Subaru of America  
Vensure Employer Services  
Vivint Solar

### Sustainer

#### \$5,000 - \$9,999

All Stars Helping Kids  
Allen Family Medicine  
Alliance Bank of Arizona  
Alta Ski Area  
AMB Design  
American Happenings  
Argosy University  
Arizona Diamondbacks  
AutoNation Toyota Tempe  
CBRE Brokerage Services  
David & Linda Bradford  
Deborah & William Beninati Family  
Edwin & Linda Lamoreaux  
Ernst & Young

---

# Friends of Forever Young

## Sustainer

### \$5,000 - \$9,999 *(continued)*

Gregory & Loretta Gailius  
Jerry Rice  
John & Lori Poulsen  
Kent & Anne-Marie Barton  
Max & Linda James  
Mediance  
MillerCoors-Carlson Distributing  
Network for Good  
P.F. Chang's China Bistro  
Paul & Martha Chamberlain  
Pei Wei Asian Diner  
PGY/MVA Capital Fund  
Rothman Family Foundation  
Salt City Candle  
San Francisco 49ers  
San Francisco Giants  
Sunquest Information Systems  
The Learning Journey  
Wells Fargo  
Workers Compensation Fund

## Sponsor

### \$1,000 - \$4,999

Adeel Jivraj  
Americopy  
Andy Rachleff  
Angel's Hands Foundation  
Ballard, Spahr, Andrews & Ingersoll  
Barry Uphoff  
Brindlee Fullmer  
Chris & Katherine Berman

Craig & Jan Zwick  
Daniel & Maura Feheley  
Darin & Courtney Zwick  
David & Lisa Young  
Dean Belshaw  
Dr. James & Diane Lally  
EAS Sports Nutrition  
Edward DeBartolo, Jr.  
Eric Nyhus  
Fairmont Princess Resort  
Ferrari Maserati of Silicon Valley  
Global Voice & Data  
Gregory Eckert & Victoria Huff  
HD Supply Waterworks  
Hertz - Salt Lake City  
Hertz - San Jose  
Interform  
Jayson Edwards Family  
Jeffrey Motto  
John & Laura Scott Moore  
John Bossard  
Lester Moore  
Lexus of Stevens Creek  
Linley Tanner Duncan & Carol Tanner  
Lothaire & Connie Bluth  
Lynn Ames  
M. Russell Ballard Trust  
Mark & Sarah Harris  
Matthew & Kristy Epp  
MetWest Terra  
Michael Zugay  
Pacific States Cast Iron Pipe  
Peter Maughn Family  
Rawhide Boys Ranch  
Ray Scott  
RCS Remote Control Solutions  
René Peña Sellen  
Rob & Ann Schilling

Ryan & Amy Scott  
S. Martinelli & Company  
Silverado Resort and Spa  
Stefani & Scott Kimche Family  
Stein Eriksen Lodge  
Sterling & Brenda Tanner  
Steven Leistner  
Sugar Rush Photography  
The Mahoney Group  
The Sherry-Netherland  
Travis & Valerie Nelson  
Under Armour  
Veritas Health Services  
Visa Giving Station  
Visit Salt Lake  
Western Organics

## Donor

### \$100 - \$999

Aldo & Jane Casartelli  
Amy Stone  
Anthony Bizzarri  
Brandon Simmons  
Brent & Melodie Bergquist  
Brent & Stephanie Linnenkamp  
Charles Googe  
Christine E. Franklin  
Cliff Young  
Darren Martinez  
David Howell  
Diane & Scott Scheffler  
Donna Cremer  
Emile Nelson  
EveryDay Hero  
Goldman Sachs  
goodshop  
Helen Yan



## Friends of Forever Young

### Donor

**\$100 - \$999** *(continued)*

Houghton Financial Partners

Jared Stein

John & Naomi Riding

John Ellis

Joseph DeCredico

Lance Bury

Lindsay Feldman

Marvin T. Rust

Matthew & Rachel Boyle

Max Ulrich

Michael & Loni Rae

Michael Huff

Nathan Tran

Patricia & Scott Skippet

Paul Perry

Paula Dublin

Ryan & Nan Tibbitts

Scott Peterson

Sean Dalesandro

Ted Dobos

The Haws Companies

Theodosia Ortega

Todd Husak

Western Association of Venture Capitalists



Forever Young Foundation  
2014 Annual Report  
Editor: Stephanie Nath  
Design: JP Sawyer





**1424**  
 South Stapley Drive  
 Mesa, Arizona  
**85204**

