

BridgeCom SYSTEMS

Gateway and Control Center

Getting Started Guide

Models: Gen-3x

MV-1

MV-i1



Contents:

Chapter 1: Initial IP Address setup 2

Chapter 2: Configuring the Control Center 6

Chapter 3: Router configuration and test..... 7

Chapter 4: URI - USB Radio Interface Information 8

USB – URI 8

Figures:

Figure 1 Port Connections 3

Figure 2 System Home Page..... 3

Figure 3 Web Browser Icon..... 4

Figure 4 Enter IP address 4

Figure 5 Logon to Control Center 4

Figure 6 Control Center configuration page..... 5

Figure 7 IP address settings 5

Figure 8 Control Center login..... 6

Figure 9 URI – USB Repeater or Radio Interface..... 8

Figure 10 URI – USB Pin-out..... 8

Figure 11 System Configuration Examples 9

5. Click on the Web Browser icon



Figure 3 Web Browser Icon

6. Enter the address 127.0.0.1:42420

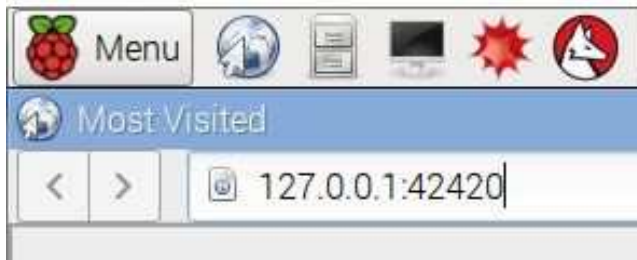


Figure 4 Enter IP address

7. Logon using User = 'admin' and password = 'tlnet'

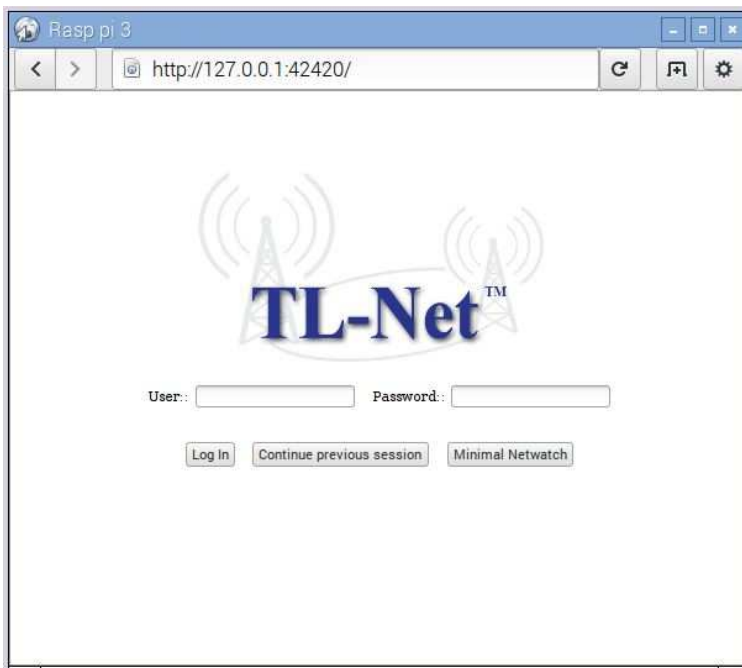


Figure 5 Logon to Control Center

8. Click "Config" tab to the left on the home page

9. Click 'TL-Net IP address settings'

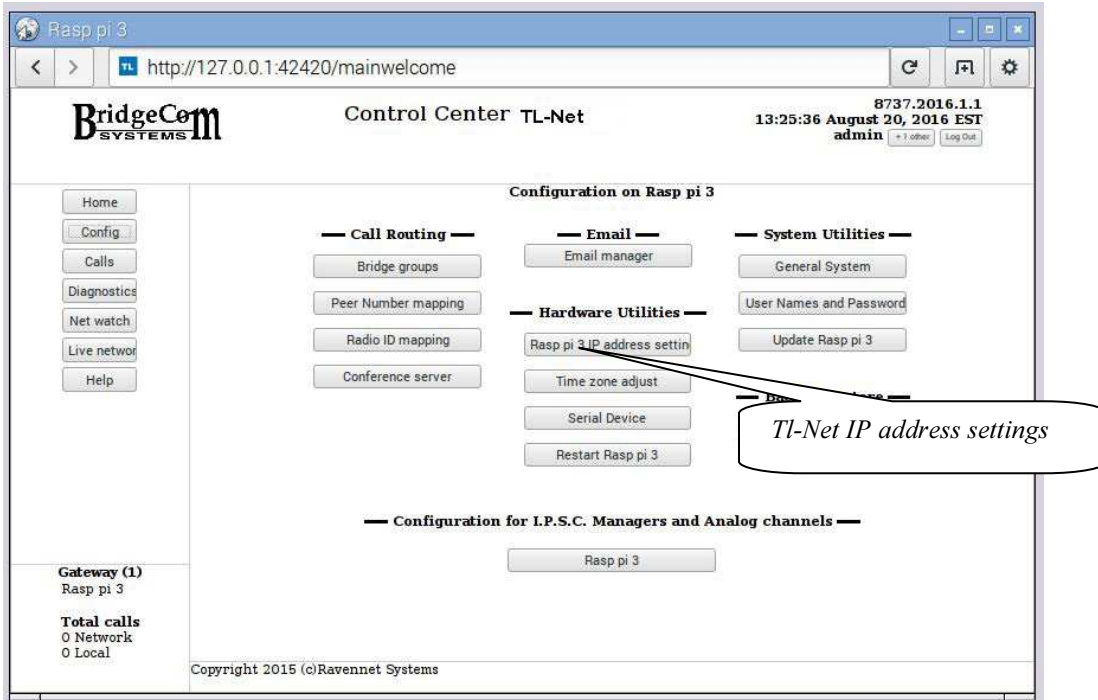


Figure 6 Control Center configuration page

10. Enter IP information

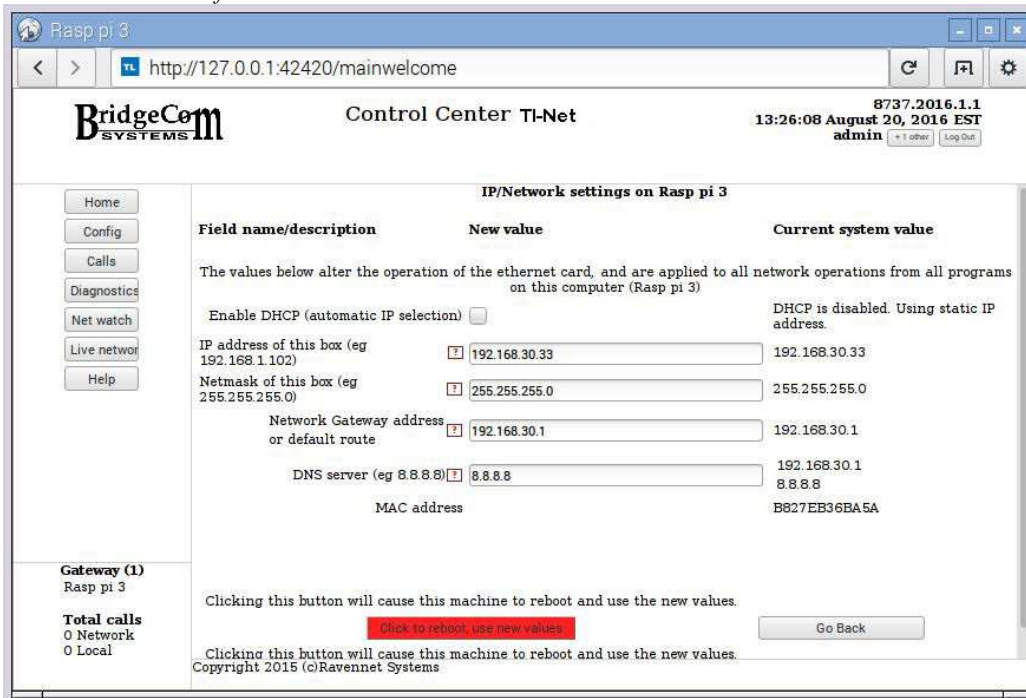



Figure 7 IP address settings

11. "Click to reboot, use new values"

12. Once you have set the IP address set you will have access to the system via the web interface (see Chapter 2) and you will not need the screen, keyboard and mouse attached to the system unit.

Chapter 2: Configuring the Control Center

- 1) Monitoring and configuration is accomplished through the web interface
- 2) Connect the Control Center to the Ethernet network.
- 3) Use a Web browser on another computer to access the web-based setup screen of the Control Center.
- 4) In the address line of a browser enter the IP address of the Control Center in the form:
http://xxx.xxx.xxx.xxx:42420 where *xxx.xxx.xxx.xxx* is the IP address of the Control Center or gateway obtained from the IP setup procedure.
- 5) You should now see the logon page of the system. See Figure 8 below as an example.



The image shows a login form with two text input fields. The first is labeled 'User:' and the second is labeled 'Password:'. Below the input fields are two buttons: 'Log In' and 'Continue previous session'.

Figure 8 Control Center login

- 6) Use the Default username = 'admin' Password = 'tlnet'
- 7) You should now see the home page of the system.
- 8) Please click on the HELP button for additional information on configuring and using the system.

Chapter 3: Router configuration and test

*It your system will be passing through a Router you must perform the following test.
This will insure your router has been configured properly to work with this system.*

Router configuration:

Option #1 Enable DMZ on your router.

- 1 - Place the address of the Control Center in the DMZ address field on your router.*
- 2 - This will pass all traffic coming from the WAN side of your router to the Control Center on the LAN side of your router.*
- 3 - If you are configuring a Gateway follow step 2 above for the gateway.*

Option #2 Use port forwarding

- 1 - Port forward 42420 through 42431 UDP to the Control Center LAN address (or gateway if you are installing a gateway)*
- 2 - Port forward 42420 through 42431 TCP to the Control Center LAN address (or gateway if you are installing a gateway)*
- 3 - IF you are using Mototrbo - IPSC Port forward the port used.*

TEST:

To test the router at the Control Center click [Diagnostics / Network Information / NAT report / NAT Report](#)

If you are using external gateways, test the routers at each Gateway by clicking [Diagnostics / GATEWAY NAME / Diagnostics Network Information / NAT report / NAT Report](#)

The report will take 60 to 90 seconds to run.

All ports on the report should show a status of "Cone NAT" or "Open"

If they do not report Cone NAT then check the configuration of your router.

For pooper operation of the Control Center all ports should report "Cone NAT" or "OPEN"

Chapter 4: URI - USB Radio Interface Information



Figure 9 URI – USB Repeater or Radio Interface

Some systems use the URI – USB analog radio interface. Below is the pin-out for interfacing to a repeater or a control station radio. Not all systems use this interface.

***** Warning – The URI – USB device must be connected to the system before the system is powered on.**

<i>Color</i>	<i>Function</i>	<i>USB – URI Pin Number</i>	State	Repeater or Radio Pin #
Black	<i>GND</i>	<i>13</i>		
<i>Orange</i>	<i>COS In – Goes to COR out of Repeater (Group id 1)</i>	<i>8</i>	<i>Active Low</i>	
<i>White</i>	<i>Line-Level Audio in (AC Coupled) Goes to Line Level Audio Out on Repeater</i>	<i>21</i>		
<i>Blue</i>	<i>Audio Out – Goes to Audio In or Mic In on Repeater</i>	<i>22</i>		
<i>Brown</i>	<i>PTT Out – Goes to PTT In on Repeater</i>	<i>1</i>	<i>Active Low</i>	
<i>Shield</i>	<i>Shield – GND</i>	<i>13</i>		

Figure 10 URI – USB Pin-out

**Optional call setup Group Ids can be generated by using the following COS pins
Instead of using the default pin #8**

Optional user ID connections

Group id 1 Pin 8 Active Low (Default)

Group id 2 Pin 7 Active Low

Group id 3 Pin 2 Active High (+5v)

Group id 4 Pin 3 Active High (+5v)

For example: If you put pin 2 high (+5v) a Group ID of 3 will be generated.

Below are some configuration examples:

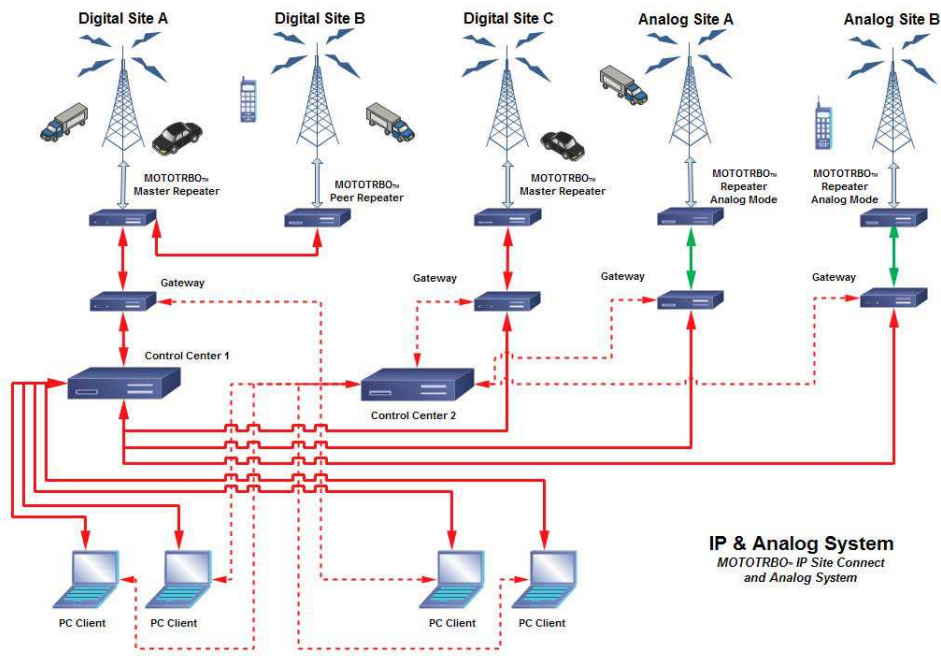
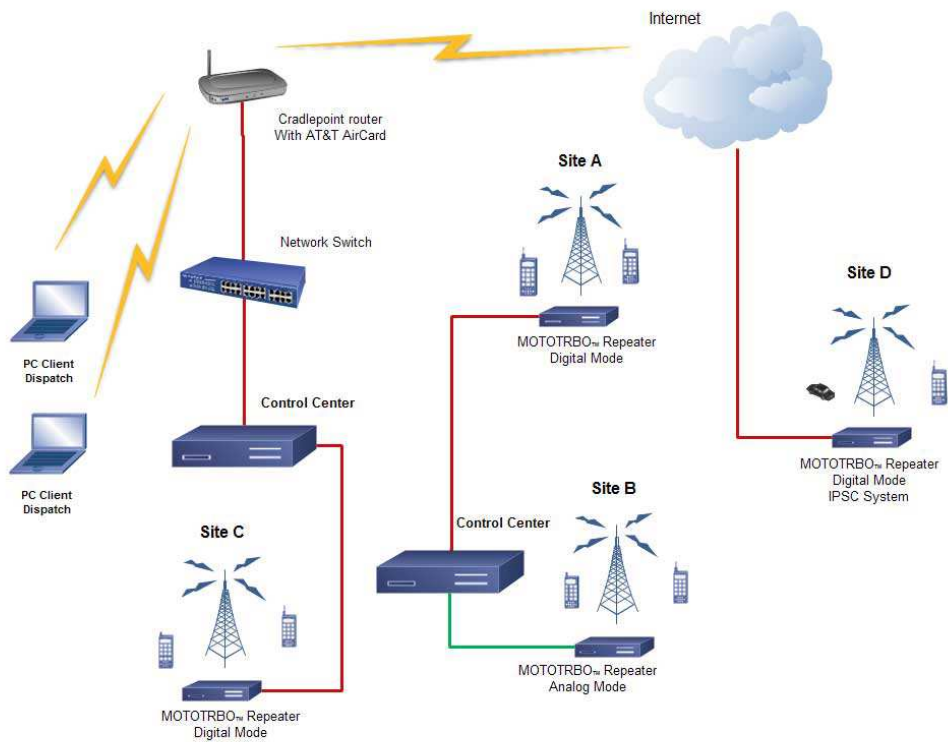


Figure 11 System Configuration Examples



*Copyright © 2016 by
RavenNet Systems, LLC
Version 1.5, August 2016
All rights reserved.
Printed in the United States of America.*

Mototrbo® is a registered trademark of Motorola Inc.