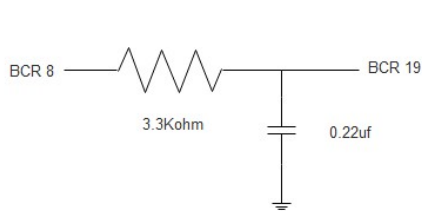


BCR Repeater to BCR Repeater

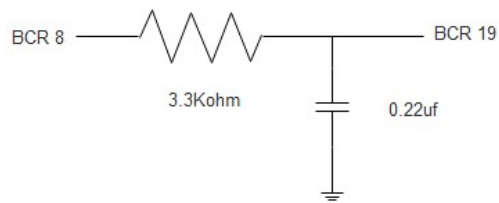
Cable used: Belden 9537

| Color | Function | BCR #1 | BCR #2 |
|--------|--|----------|----------|
| Black | GND | 25 | 25 |
| Orange | PTT In – Goes to COR out of Repeater | 20 (In) | 17 (OUT) |
| White | Line-Level Audio in (AC Coupled) – Goes to High Level Audio Out of Rptr. | 19 (IN)* | 8 (OUT) |
| Blue | Audio Out – Goes to Audio In or Mic In of Rptr | 8 (OUT) | 19 (IN) |
| Red | NOT USED | - | - |
| Green | NOT USED | - | - |
| Brown | COR Out – Goes to PTT In of Repeater | 17 (OUT) | 20 (IN) |
| Shield | Shield – GND | 25 | 25 |

*3.3Kohm in series with 0.22 uF to ground



REPEATER #1



REPEATER #2