

## *BCR-40U/50V* FM Repeater System

Introducing the ComLink™ BCR-40U/50V FM Repeater System by BridgeCom Systems, Inc. The BCR Repeater provides a feature rich repeater/base station. Packed with loads of RF power, this dual fan-cooled unit can become a community repeater, a 16 channel base station, manage a channel in an LTR® trunking system, and much more.



### Applications

**On-Site Communications:** Provide clear, reliable communications for settings such as golf courses, warehouses, office buildings, factories, colleges, and universities.

**Community Repeater:** Each channel provides for quick and reliable decode of CTCSS and DCS.

**Trunking Systems:** Excellent choice for interfacing LTR® trunking controllers.

**Feature Rich Base Station:** 16 channels support up to 24 users per channel.

**Amateur Repeater:** Both VHF and UHF versions operate in their respective amateur region of the spectrum.

### Options

**External Peripherals:** Easily connect a telephone interconnect, DC remote, tone/code panel, paging board, and telemetry devices.

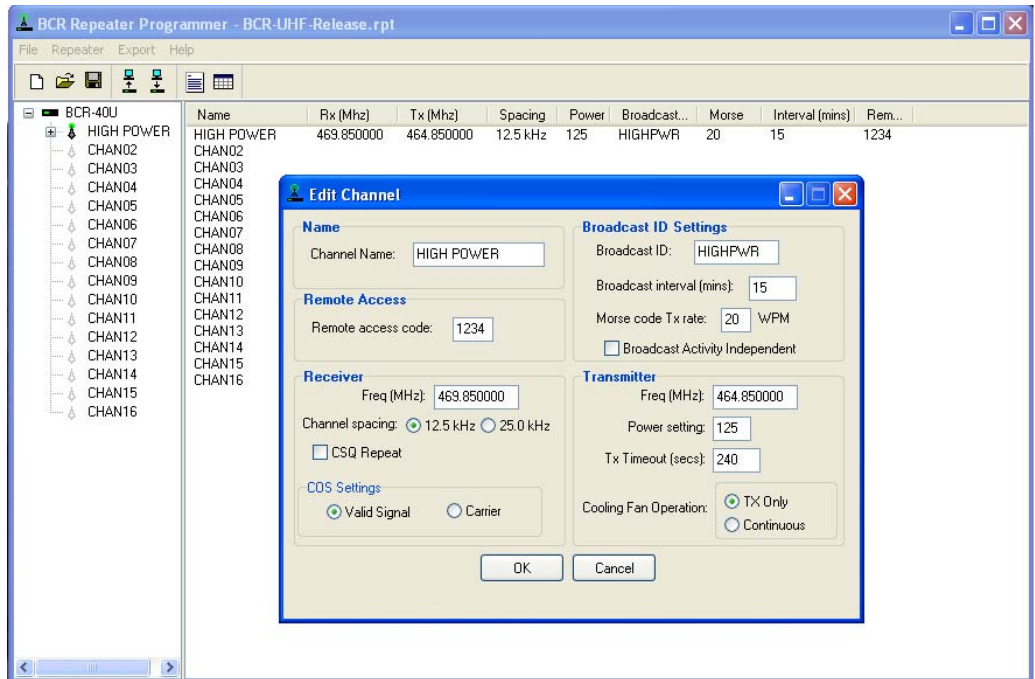
**Link-Radio Ready:** Connect a "Link-Radio" for cross-band applications and interoperability.

**GMRS Ready:** Add a tuned internal duplexer.

**Customizable:** Flash Memory permits updates. Contact us if you have a need that is not mentioned here.

# Features

- Built-In 10A Power Supply
- Battery Backup with Built-in Charging Circuit
- 13.8 Volts Output
- Dual Cooling Fans
- Front & External Speaker
- 25-pin Accessory Connector:
  - RX Discriminator Out
  - External PTT In
  - TX Audio In
  - +13.8V Out (1A Max)
  - COS Output
- Keypad Lock
- Adjustable Squelch
- 12.5 kHz/25 kHz Channel
- Over-the-Air Programmable
- Adjustable RF Power
- Transmitter Fine tuning
- TX Timeout Timer
- Per User Features:
  - Air Time Logging
  - Courtesy Tone (0, 500, 1000, 1500)
  - TX Hang Timer
  - Tone-In-Tail
- Built-in CWID
- CSQ Repeat
- LTR<sup>®</sup> Compatible and Lo-Speed Data Ready
- Windows<sup>®</sup> Based Programmer



Windows<sup>®</sup> Based Programmer Screen Shot

General	BCR-40U	BCR-50V
Number of Channels:	16	
Operating Voltage:	13.8 V DC Nominal	
Channel Spacing:	12.5kHz / 25kHz	
Current Drain:	10A Max	
Weight:	18 lbs.	
Weight w/ Duplexer:	20 lbs.	
Frequency Range:	400-470 MHz 450-510 MHz	136-174 MHz
Dim. (W x H x D):	19.0" x 3.5" x 13.5"	
Frequency Stability:	+/-1.5 ppm	+/- 1.5 ppm
Operating Temp Range:	-22° F to +140° F (-30° C to +60° C)	

Specifications per EIA Standards. In our on-going commitment to quality, specifications are subject to change without notice.

LTR<sup>®</sup> is a registered trademark of EF Johnson Corporation. Windows<sup>®</sup> is a registered trademark of Microsoft Corporation.

Receiver	BCR-40U	BCR-50V
Local Oscillator:	Low-side injection	Low-side injection
Sensitivity:	0.25 $\mu$ V @ 12dB SINAD / 0.22 $\mu$ V @ 10dB	
Squelch Threshold:	Open 12dB SINAD/ Close 8dB SINAD	
Selectivity:	65dB @ 12.5kHz 70dB @ 25.0kHz	
Spurious Rejection:	70dB 70dB	
Intermodulation Rejection:	72dB @ 12.5kHz	72dB @ 25.0kHz
Antenna Connector:	N-Type	
Antenna Impedance:	50 $\Omega$	
Transmitter	BCR-40U	BCR-50V
RF Output (w/o duplexer): Programmable	400-470 @ 0-40W 450-510 @ 0-40W adjustable	136-174 @ 0-50W adjustable
Modulation:	16K0F3E, 11K0F3E	
Maximum Deviation:	+/- 5kHz (25 kHz) +/- 2.5 kHz (12.5 kHz)	
FM Hum and Noise:	40dB @ 12.5kHz 45dB @ 25.0kHz	
Antenna Connector:	N-Type	
Antenna Impedance:	50 $\Omega$	