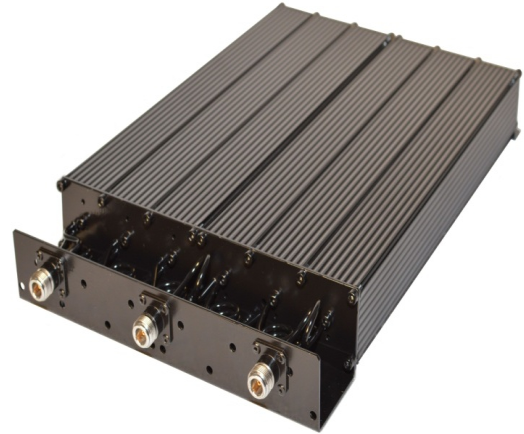


## BCD-220 Duplexer

BridgeCom Systems BCD-220 series duplexers:

- For 220 MHz Amateur Radio
- Up to 150 W continuous input power
- 85dB Isolation
- Low Loss
- Compact dimensions



BridgeCom Systems BCD-220 utilizes six high-Q notch-type coaxial resonators with 2"-cross-section that results in small geometry advantages without compromising duplex isolation. Due to the right material choice and temperature compensated design, temperature stability is achieved. The resonators are made of extruded aluminum passivated inside and outside with the galvanized steel chassis and PTFE insulation has been applied in the coaxial cables and in the connectors.

### Specifications

Electrical	BCD-220
<i>Frequency spacing, MHz</i>	210-230
<i>Typical Tx to Rx split, MHz (Min. Tx to Rx split)</i>	2(1.3)
<i>Max. input power, Wt</i>	150
<i>Max. insertion loss, dB</i>	1.4 at 1.3 MHz split
<i>Isolation, dB</i>	85
<i>Impedance, Ohms</i>	50
<i>Return loss (VSWR)</i>	>21 dB (<1.2)
<b>Mechanical</b>	
<i>Connectors</i>	N-female
<i>Temperature range, °C</i>	-30°...+60°
<i>Dimensions (HxWxL), mm</i>	55 x 252 x 438
<i>Weight, lb (kg)</i>	7.5 (3.4)