



LB120: Data Transfer From InBody

1. Insert your InBody USB thumb drive into the back USP port of your InBody



2. Once you have inserted the USB thumb drive, go to option 07. Export Data as Excel. Choose select all and then press START . Once the export has been completed, please remove the USB thumb drive and insert it into your computer

07. Export Data as Excel

Help

Exit

Export all or specific data saved in the InBody as an Excel file by connecting a USB Thumb Drive. Select data and export.



Export All

Export all data saved in the InBody. Large amounts of data may increase export time.



Select

Select data and export. Search by test date or ID.

3. Once you have inserted the InBody USB thumb drive. Open up the LB120 and press the Setup on the top left corner

Lookin'Body120 Setup

Select Member

Search by Name or ID
 Search **List All**

Search by InBody Test Date
 ~ Search **Register New**

Select Test

InBody Test

Manage Results

Print E-mail Edit

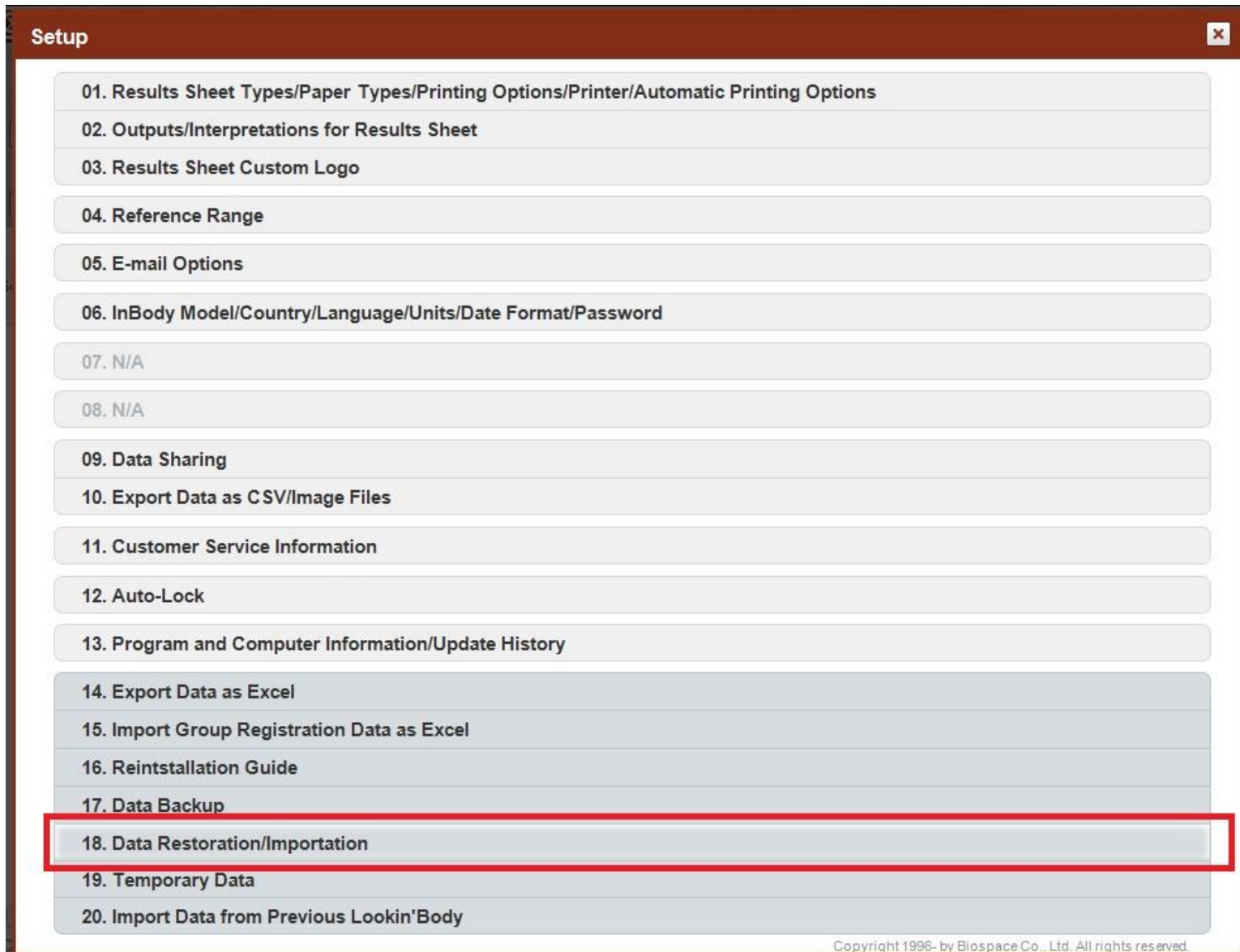
Member(s) Name Ascending

| Select | Name | ID | Height (ft.in.) | Age | Gender | Member Info. | Health Report |
|--------------------------|------|----|-----------------|-----|--------|--------------|---------------|
| <input type="checkbox"/> | | | | | | | |

User's Guide

First, select a member.

4. Go to Option 18. DATA RESTORATION/ IMPORTATION



The image shows a 'Setup' window with a list of 20 options. The options are:

- 01. Results Sheet Types/Paper Types/Printing Options/Printer/Automatic Printing Options
- 02. Outputs/Interpretations for Results Sheet
- 03. Results Sheet Custom Logo
- 04. Reference Range
- 05. E-mail Options
- 06. InBody Model/Country/Language/Units/Date Format/Password
- 07. N/A
- 08. N/A
- 09. Data Sharing
- 10. Export Data as CSV/Image Files
- 11. Customer Service Information
- 12. Auto-Lock
- 13. Program and Computer Information/Update History
- 14. Export Data as Excel
- 15. Import Group Registration Data as Excel
- 16. Reinstallation Guide
- 17. Data Backup
- 18. Data Restoration/Importation
- 19. Temporary Data
- 20. Import Data from Previous Lookin'Body

Option 18, 'Data Restoration/Importation', is highlighted with a red box.

Copyright 1996-by Biospace Co., Ltd. All rights reserved.

5. Once you are in Option 18, please press the button on the bottom and select the file that was unzipped earlier and choose the lookinbody folder.

18. Data Restoration/Importation

Data Restoration will restore member information, test results, and user settings from a previous Lookin'Body backup file. Data Importation will import saved data from the InBody by using a USB Thumb Drive.

1. Restore data from a previous Lookin'Body backup file

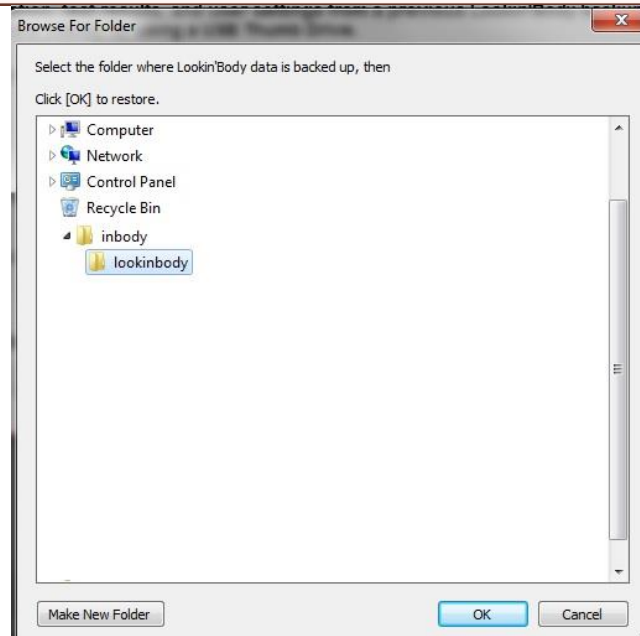
- 1) Click [Data Restoration/Importation] below.
- 2) Select the folder that has the backup file.

2. Import data saved from the InBody by using the USB Thumb Drive

- 1) Click [Data Restoration/Importation] below.
- 2) Select the USB Thumb Drive used to export data from the InBody. Click the 'inbody' folder, then select the 'lookinbody' folder.

Click the button below to restore data.

Data Restoration/Importation



6. Once the transfer has been completed, you will receive a confirmation message and the it will prompt that the software program will restart. Once the LB120 re-opens, press LIST ALL to verify that restoration was successful.

18. Data Restoration/Importation

Data Restoration will restore member information, test results, and user settings from a previous Lookin'Body backup file. Data Importation will import saved data from the InBody by using a USB Thumb Drive.

1. Restore data from a previous Lookin'Body backup file

- 1) Click [Data Restoration/Importation] below
- 2) Select the folder that has the backup file.

2. Import data saved from the InBody

- 1) Click [Data Restoration/Importation] below
- 2) Select the USB Thumb Drive used to save the data.

Lookin'Body

Lookin'Body will restart to apply changes.

OK

select the 'lookinbody' folder.