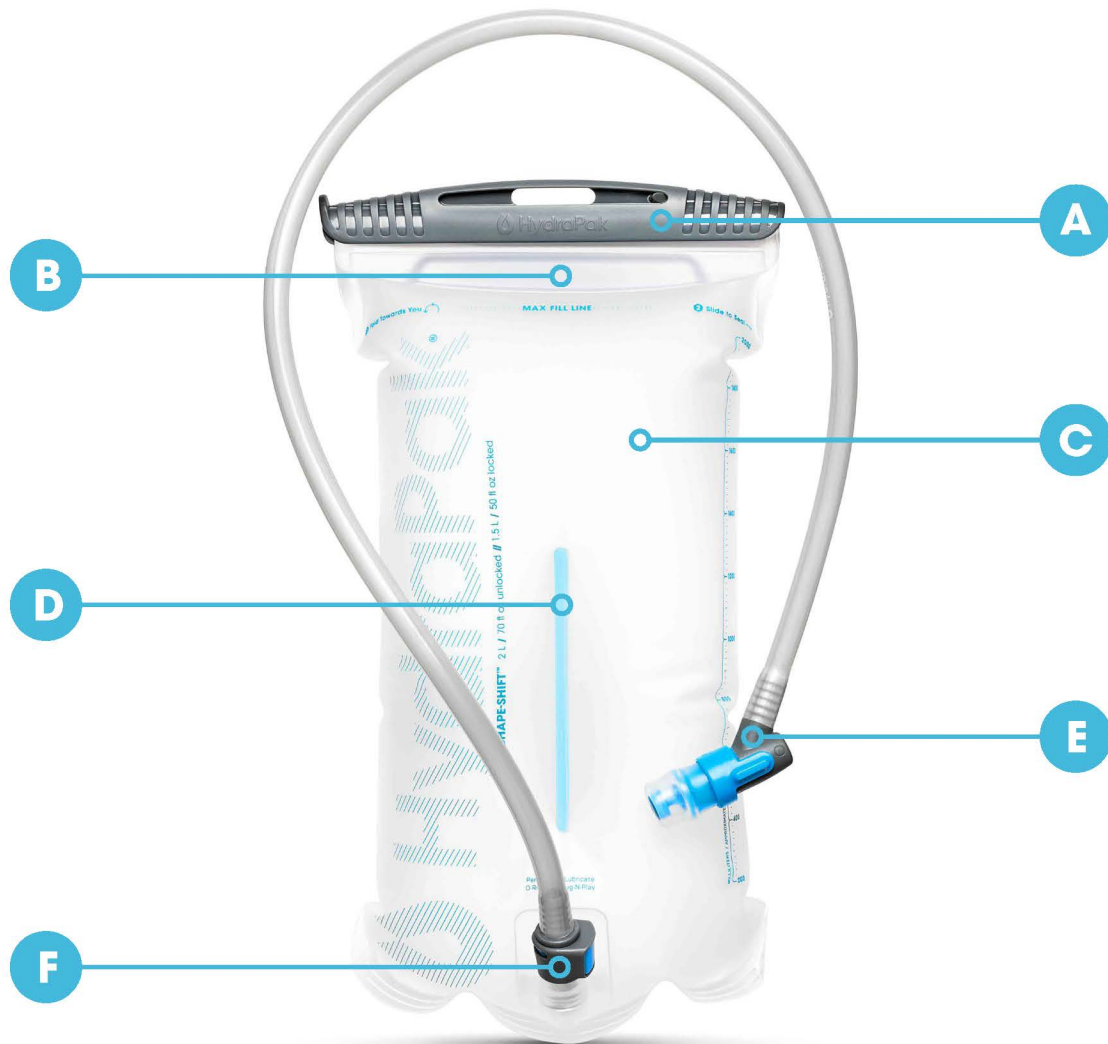


SHAPE-SHIFT™ RESERVOIR

OVERVIEW



A SLIDE-SEAL™

Opens wide for fast filling & closes tight for a leak proof seal

B FLEXGRIP

Dual FlexGrips make it simple to fill, carry and access in your pack

C REVERSIBLE

Turns inside out for easy cleaning & drying

D SHAPE-SHIFT™ BAFFLE

Locks for slim profile & increased stabilization, unlocks for full volume

E BLASTER™ BITE VALVE

Self-seals after each sip & features a twist on/off to prevent leaks when not in use

F PLUG-N-PLAY™

Easily disconnect tube & remove reservoir from pack for convenient refilling

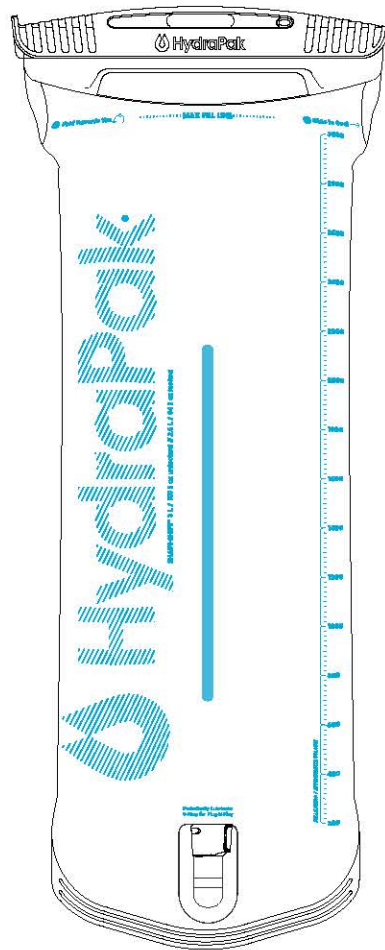


Learn more at [hydrapak.com](https://www.hydrapak.com)

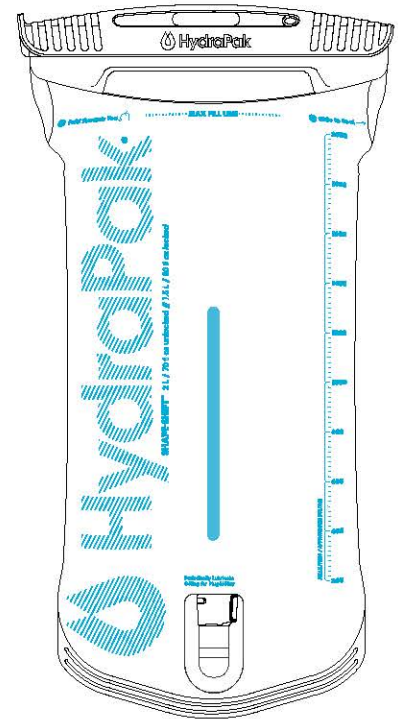
Oakland, CA 94621 / (303) 440-0358 © 2020 HydraPak, LLC

SHAPE-SHIFT™ RESERVOIR

SPECS



Shape-Shift™ 3L Reservoir



Shape-Shift™ 2L Reservoir

CAPACITY
(Baffle Unlocked)

3 L / 100 fl oz

2 L / 70 fl oz

CAPACITY
(Baffle Locked)

2.5 L / 84 fl oz

1.5 L / 50 fl oz

DIMENSIONS

445 x 165 mm / 17.4 x 6.5 in

340 x 165 mm / 13.3 x 6.4

WEIGHT

154 g / 5.4 oz

141 g / 4.9 oz

MATERIAL

TPU, PP/POM, ABS, SILICONE

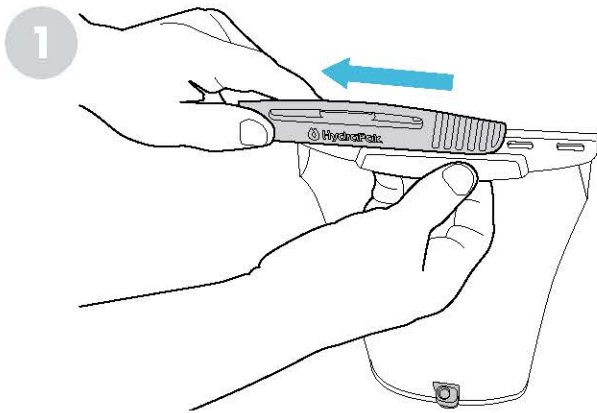
TPU, PP/POM, ABS, SILICONE



Learn more at [hydrapak.com](https://www.hydrapak.com)
Oakland, CA 94621 / (303) 440-0358 © 2020 Hydrapak, LLC

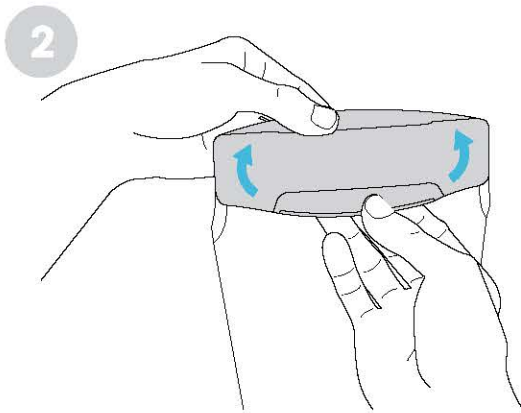
SHAPE-SHIFT™ RESERVOIR

PRODUCT CARE & USE

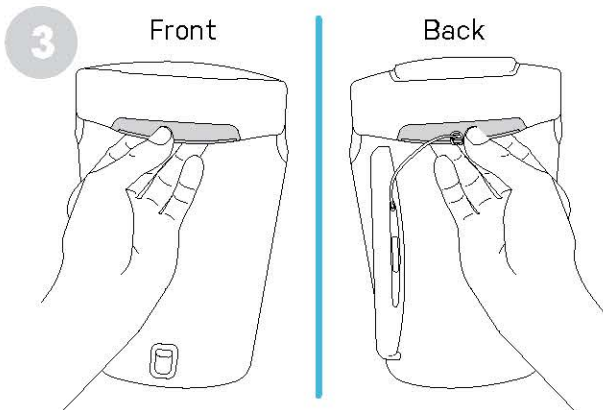


OPENING YOUR RESERVOIR

- 1** Grasp the slider top firmly and pull to the side.
 - * The slider is directional so be sure to pull towards the closed end of the slider.



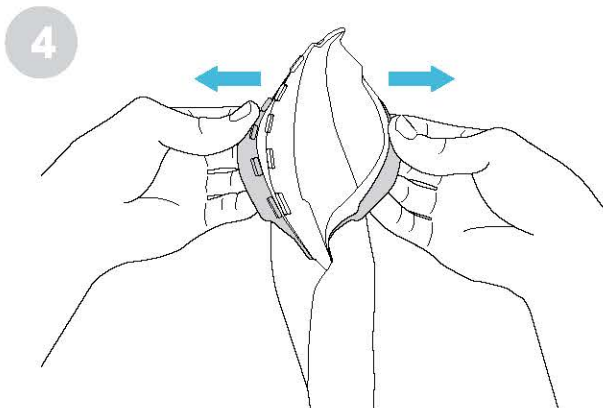
- 2** Flip the flap up.



- 3** Locate the front handle and place 2 or more fingers underneath.
 - * The front of the reservoir has the hose connection

On the back side of reservoir, locate the back handle and place 2 or more fingers underneath.

 - * The back of the reservoir does not have the hose connection

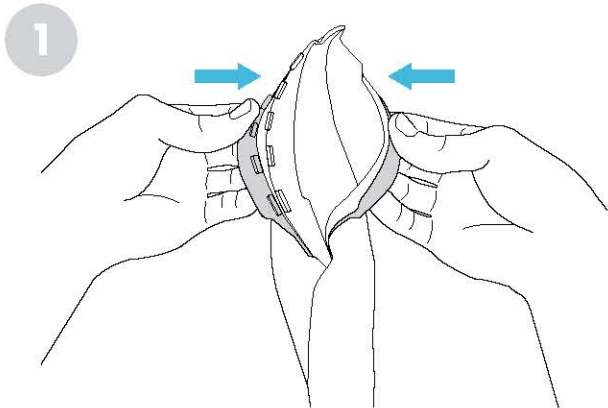


- 4** With a firm grasp of both the front and back handles, pull the two handles apart from each other.
 - * Brand new reservoirs may take more effort to open on first use. Pull with force! The reservoir is built out of tough TPU material and can take on the stress.



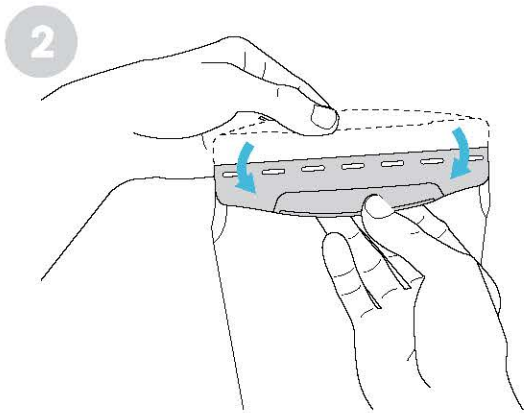
SHAPE-SHIFT™ RESERVOIR

PRODUCT CARE & USE

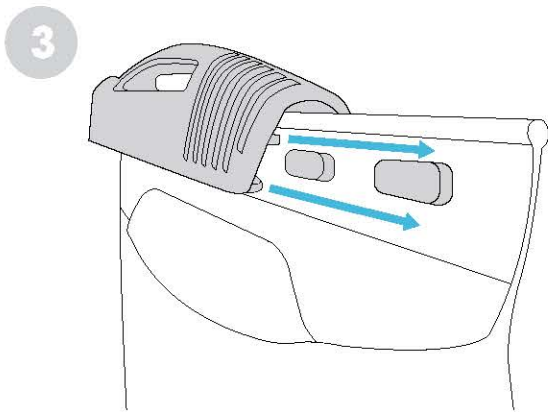


CLOSING YOUR RESERVOIR

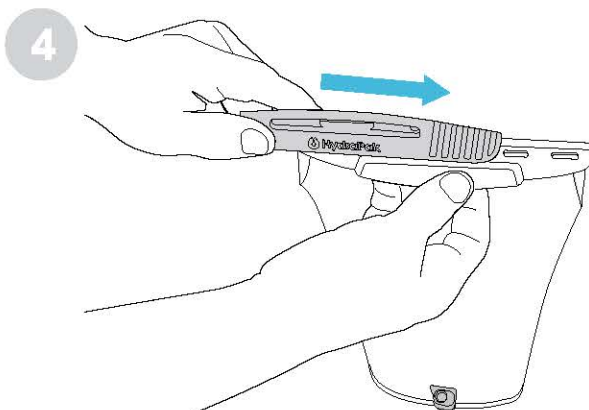
1 Close the opening of the reservoir by pressing each side to each other.



2 Fold the flap down toward the front of the reservoir.



3 Position the slide seal onto the top of the reservoir. Align the groove of the slide seal with the tracks on the flaps of the reservoir.

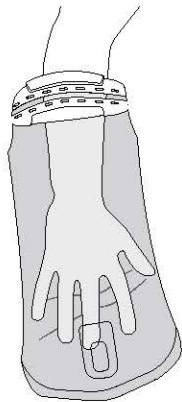


4 Once aligned, push the slide seal across the top to seal the reservoir

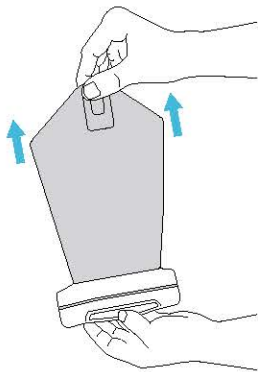
SHAPE-SHIFT™ RESERVOIR

PRODUCT CARE & USE

1



2



CLEANING YOUR RESERVOIR

1 To clean, unlock the baffle first (see page 09) and then place your hand in the reservoir.

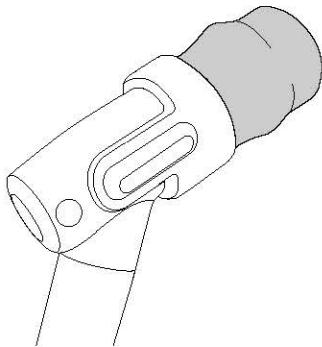
2 Pull back through opening - turning inside out.

Clean by hand with warm water and mild dish soap or use top rack of dishwasher.

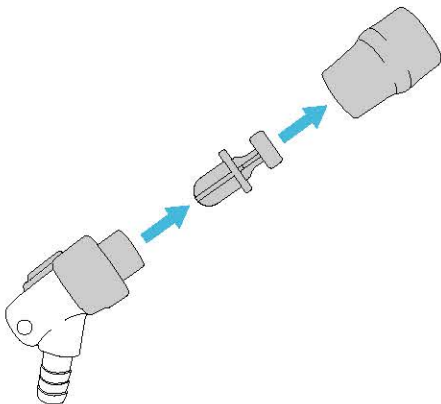
Set out to dry. Store out of direct sunlight, in clean and dry space.

* Keeping your reservoir clean is key to prolonging its life and your water tasting fresh.

1



2



CLEANING YOUR BLASTER™ BITE VALVE

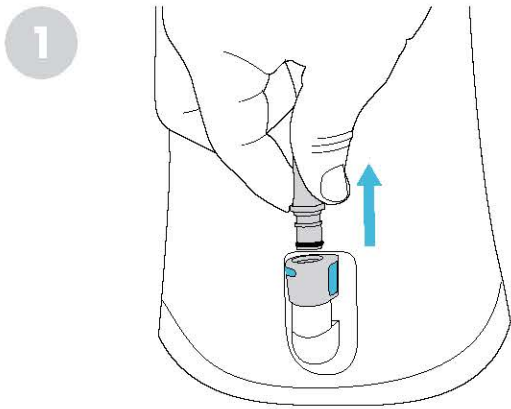
1 Clean the surface of the sheath with warm water and mild dish soap.

2 For periodic deep cleaning of the valve, pull sheath from valve body then push center post out through the end of the sheath.

Hand wash with warm water and mild dish soap or place into dishwasher.

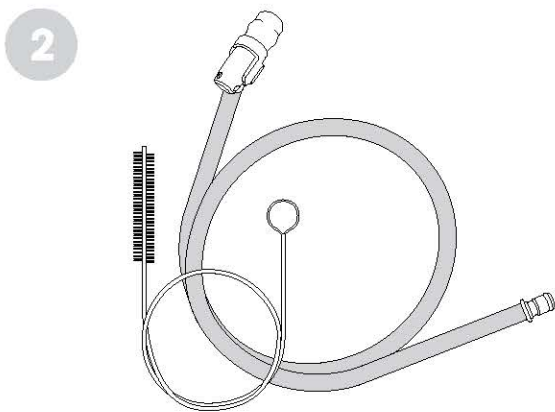
SHAPE-SHIFT™ RESERVOIR

PRODUCT CARE & USE



CLEANING YOUR HYDRAFLEX DRINK TUBE

1 If equipped with a PLUG-N-PLAY™, disconnect the hose from the reservoir.



2 Flush hot, soapy water through the tube followed by a cold water rinse.

For deep cleaning, HydraPak makes a 36" tube brush that allows you to scrub the entire inside length of the tube. Check out [HydraPak Accessories](#) online for more details.



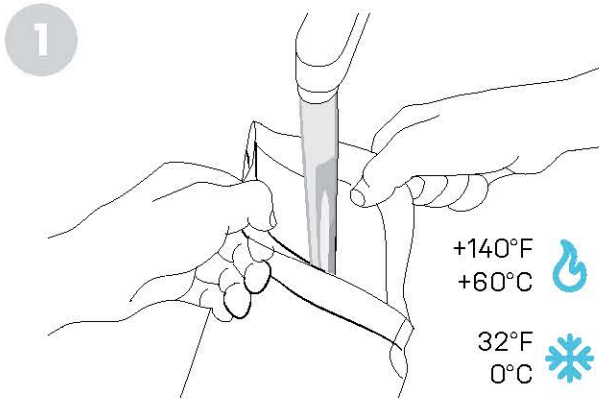
CLEANING WITH BOTTLE BRIGHT® TABLETS

1 Use [Bottle Bright®](#) cleaning tablets as an alternative cleaning solution for your reservoir, bite valve, tube and other components.

Set the dirty component into a bowl of hot water and add a Bottle Bright® cleaning tablet. Let it sit for 30 minutes and rinse.

SHAPE-SHIFT™ RESERVOIR

PRODUCT CARE & USE



FILLING YOUR RESERVOIR

- * Before using your reservoir for the first time, be sure to clean your reservoir prior to use (see page 06).

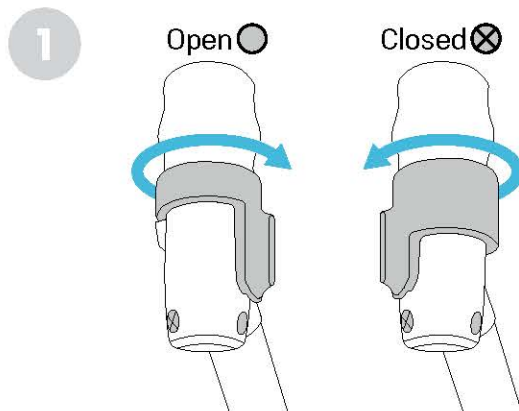
1 Use the FlexGrips to pull apart the reservoir and keep open to fill. Fill the reservoir with water.

Do not fill past the max-fill indicator on the reservoir.

The reservoir can be frozen with water without any damage.

Maximum recommended water temperature the reservoir can handle is 140°F / 60°C.

- * Use caution when handling with hot water/liquids to avoid any burns!



DRINKING FROM YOUR BLASTER™ BITE VALVE

1 For active use, rotate the shut off valve to the open position, bite gently, and suck to drink.

- * Do not bite too hard on the silicone sheath as it can lead to premature wear and tear!

During activity, the shut off valve can remain open as the self-sealing silicone sheath will prevent the valve from leaking.

For transport or storing away, rotate the shut off valve to the closed position to fully close and prevent accidental leaking.



Learn more at [hydrapak.com](https://www.hydrapak.com)

Oakland, CA 94621 / (303) 440-0358 © 2020 HydraPak, LLC

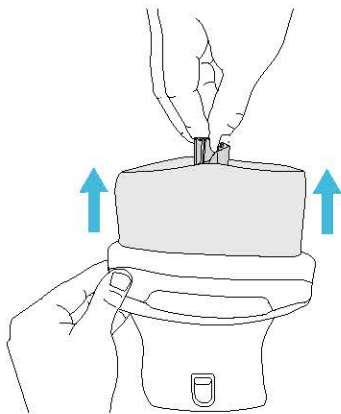
SHAPE-SHIFT™ RESERVOIR

PRODUCT CARE & USE

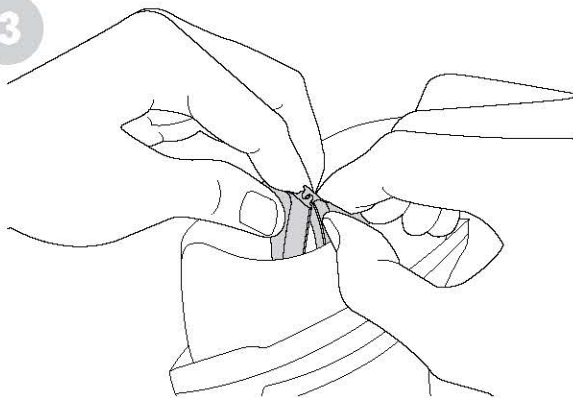
1



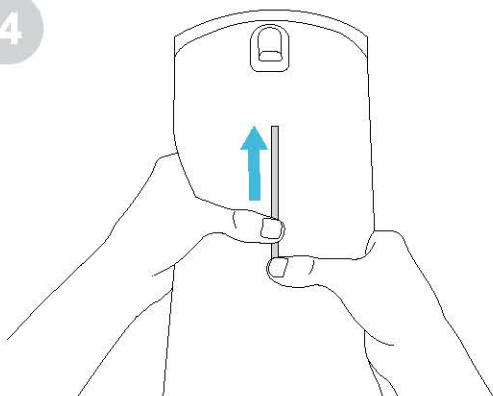
2



3



4



SHAPE-SHIFT BAFFLE - LOCKING & UNLOCKING

1 To **lock** the baffles, reach inside the reservoir and grab the top of the baffles.

2 Reverse the reservoir partially inside-out to expose the top of the baffles.

3 Press both molded parts together at the top of the zipper.

4 Return the reservoir to its right-side-out orientation and slide fingers down the full length of the baffle while squeezing together.

To **unlock** the baffles, empty contents from the reservoir and do steps 1 - 4 in reverse order.

* Apply a food-grade lubricant to one side of your baffle to make unlocking and locking easier.

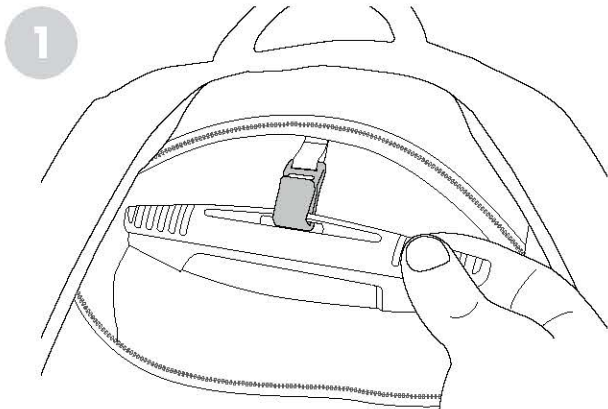


Learn more at [hydrapak.com](https://www.hydrapak.com)

Oakland, CA 94621 / (303) 440-0358 © 2020 HydraPak, LLC

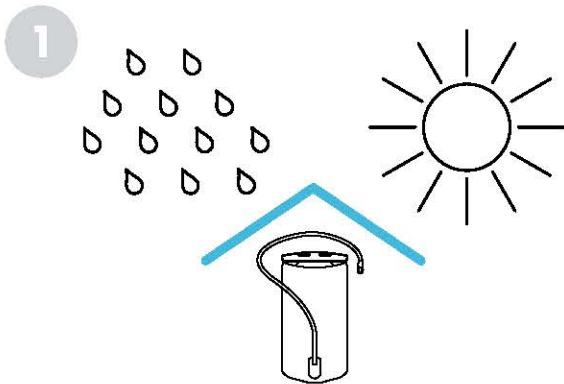
SHAPE-SHIFT™ RESERVOIR

PRODUCT CARE & USE



ATTACHING YOUR RESERVOIR TO A PACK

- 1 The Shape-Shift reservoir is compatible with most packs, if needed, use the included clip to hang your reservoir in your pack.



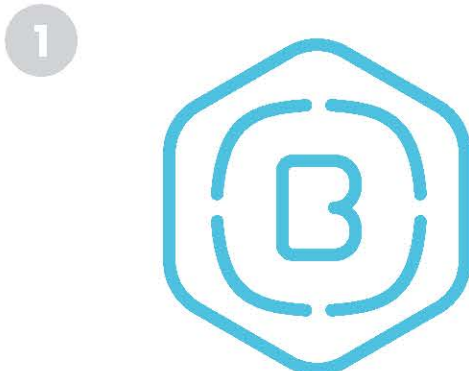
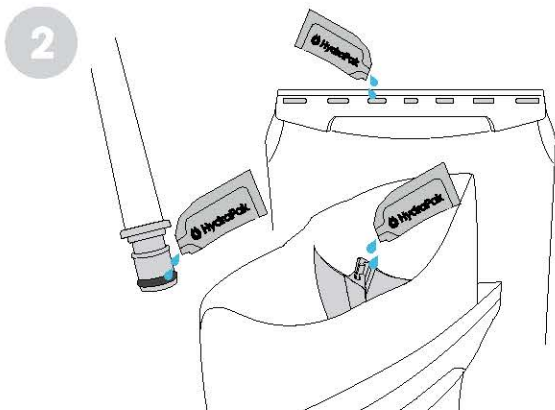
MAINTENANCE

- 1 When not in use, store your reservoir out of direct sunlight in a clean and dry area.

- 2 Periodically apply food grade lubricant to the slider rails, Plug-N-Play O-Ring and baffles to help maintain proper function.

Apply a small dot of lubricant on the o-ring, baffle, or slider rails.

You only need enough to lightly coat the o-ring. Too much lubricant can have a counter-productive effect, so go lightly with the application.



WARRANTY

- 1 We go above and beyond with every product we make and our warranty is no different.

If you experience any issues with the product's manufacturing or materials we'll repair or replace the item for free.

Learn more about our [Beyond™ Lifetime Guarantee](#).