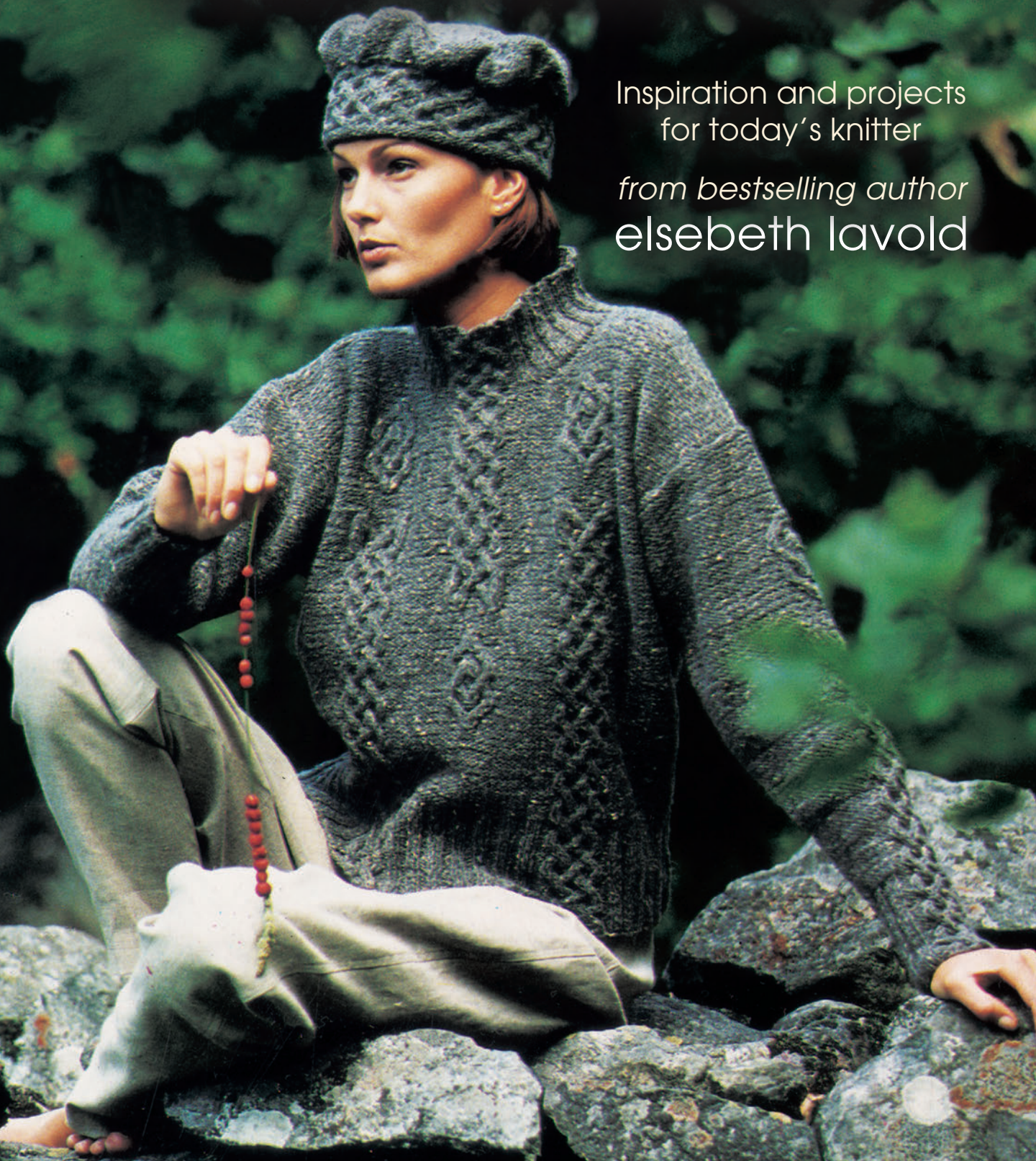


"A high-end knitting-pattern book of classic garments...fascinating." —*Library Journal*

VIKING PATTERNS FOR KNITTING

Inspiration and projects
for today's knitter

from bestselling author
elsebeth lavold



DUPLICATION PROHIBITED
by copyright holder

ELSEBETH LAVOLD

Viking Patterns for Knitting

Inspiration and Projects for Today's Knitter

Photos by Per Erik Berglund
Translated by Robin Orm Hansen



TRAFALGAR SQUARE
North Pomfret, Vermont

© Elsebeth Lavold and Trafalgar Square Books
www.trafalgarbooks.com



Siv

Classic pullover with chain links and ribbing

Siv is a classic shape with inset sleeves. The long, linked, twisted rings lined with narrow ribbing have a powerful graphic effect on the wide bands of plain stockinette. The length of the sweater is determined by the number of rows in the repeat. You can change the sweater's length by lengthening or shortening the "straightaway" distances.

Finished measurements: Bust, 34½/88 (37¾/96) 40/102 (42½/108) in/cm. Length, 24¾ in/63 cm.

Materials: 7 (7) 8 (9) 50-gram skeins Silketweed (or Soft Woolsilk.)

Needles: 2.5 mm and 3 mm needles.

Tension: 25 sts x 34 rows in stockinette on 3 mm needles = 4 inches square or 10 x 10 cm. The 24 sts of the pattern band (16 sts + the ribs on both sides) x 50 rows = 3 x 6 inches/7.5 x 15 cm. Check your tension carefully while knitting.

Pattern: Follow chart for *Cable with linked rings* on p 19. Rows 1 and 2 are repeated 10 times between motifs, the height of 1 repeat is 50 rows.

Back

With 2.5 mm needles, cast on 122 (130) 138 (146) sts and rib: k 2, p 2, for 1¼ in/3 cm. The 2 outermost sts on each side should be knitted on the right side of work. Change to 3 mm needles and k 14 (18) 22 (26) sts in stockinette, *(p 2, k 2) twice, p 2, inc 1 p st, p 2, inc 1 p st, p 2 (= 8 consecutive purl sts), (k 2, p 2) twice, k 14 stockinette. Repeat from * 3 times and end with k 0 (4) 8 (12) sts = 128 (136) 144 (152) sts. In following rows, keep all purl sts purl, all knit sts knit. The center panel begins by repeating Rows 1 and 2 ten times. The pattern bands on the sides begin with Row 3 in chart. When work measures 16½/42 (16/41) 16/41 (15¾/40) in/cm, bind off for armhole: Bind off 3 (4) 5 (6) sts every row and each edge twice, then dec 1 st each edge every other row 5 (6) 7 (8) times = 106 (108) 110 (112) sts. K even. When armhole measures 8½/21 (8¾/22) 8¾/22 (9/23) in/cm, put center 50 (50) 52 (52) sts on a holder and k each side separately. Bind off on shoulder sides 9, 9, 10 (9, 10, 10) 9, 10, 10 (10, 10, 10) sts.

Front

K front like back until armhole measures 5/13 (5¼/14) 5½/14 (6/15) cm. Put center 26 (26) 28 (28) sts on a holder for neck and knit each side separately. Bind off on neck side, 2 sts 3 times, and then dec 1 st every other row 6 times. Bind off shoulder at the same height and in the same way as on back. Repeat, mirror image, on the other side of neckline and opposite shoulder.

Sleeves

With 2.5 mm needles, cast on 50 (50) 54 (54) sts and rib, k 2, p 2, for 1¼ in/3 cm, making sure you have k 2 (k 2) p 2 (p 2) on outside edges of right side of work. Change to 3 mm needles and k 14 (14) 16 (16), (p 2, k 2) twice, p 3, inc 1 p, p 2, inc 1 p, p 3 (= 10 p sts), (k 2, p 2) twice, k 14 (14) 16 (16) = 52 (52) 56 (56) sts. In following rows, keep all p sts purl and all k sts knit. The pattern panel begins by repeating Rows 1 and 2 ten times.

Inc 1 st each side every 6th row 17 (20) 21 (24) times = 86 (92) 98 (104) sts. When sleeve measures about 17 in/43 cm, bind off for underarm 3 (4) 5 (6) sts each side and then dec 1 st each side every other row until 34 sts remain. Bind off 2 sts at beginning of every row 4 times. Bind off. Knit another, identical, sleeve.

Assembly

Block all pieces. Sew right shoulder seam. **Neckline:** On 2.5 mm needles, pick up 112 (112) 116 (116) sts around neck and rib for 1¼ in/3 cm (dec where needed so that the pattern ribs continue into ribbing). Bind off in ribbing. Sew left shoulder and left neckline. Sew sleeves into armholes, centering sleeve at shoulder seam, then sew sleeve and side seams continuously.



Fjörgyn

Jacket and hood covered with ropey half-hitches

The color speaks of stone and the shape of a soft woolly Icelandic sheep. Opposites meet in this sweater, which is almost a cape — large and scrumptious with a generous hood and big pockets. Add a windproof lining and you'll have great outerwear for fall and early spring.

Sizes: One size will fit small, medium, and large

Finished measurements: Bust, 51 in/130 cm. Length, 33 in/84 cm.

Materials: 16 balls Lopi. 7 buttons.

Needles: 5.5 mm and 6 mm needles.

Tension: 13 sts and 18 rows in stockinette on 6 mm needles = 4 inches square or 10 x 10 cm. Knit a tension swatch and change your needle size if necessary.

Please note: The front has no neckline and the pattern on the front continues without interruption onto the hood.

Left front

With 5.5 mm needles, cast on 63 sts and rib, p 2, k 2, for 3¼ in/8 cm, making sure there are 2 k sts inside the edge st at the front edge and 1 k st inside the edge st at the side, on the right side of work. Start pattern, following charts a-e and a-b and maintaining knit selvage sts, starting at Rows 0 + 00 (**Note** the decreases in Row 0, which line up ribs in pattern with ribbed edge.) and then Rows 1-32. Continue to knit pattern a-b on the 21 sts of front pattern panel, but k remaining sts as **pocket edging**: Knit ribbing, k 2, p 2, and *inc* in pattern so that pattern ribs continue into ribbing. When ribbing is 1½ in/4 cm long, bind off pocket sts in ribbing, letting the 21 sts from front pattern panel rest while you knit **inside of the pocket**: With 6 mm needles, cast on 30 sts and knit stockinette for 30 rows. Place this piece next to front edge panel and join them. Continue knitting on 6 mm needles in stockinette on stitches continuing up from pocket and continue pattern on front edge panel. When work measures about 30 in/76 cm, bind off on sleeve side for shoulder: Bind off 5 sts 6 times (at the beginning of every second row). Place remaining 21 sts of front border on a holder.

Right front

Knit mirror image to the left front, following the chart c-e for front panel and a-d for pocket.

Back

On 5.5 mm needles, cast on 86 sts and rib k 2, p 2 for 3¼ in/8 cm, taking care to start and end with 2 k sts on right side of work. Change to 6 mm needles and stockinette

st. Knit even until work measures 30 in/76 cm. Bind off shoulders, 5 sts 6 times each side, and put remaining 26 sts on a holder.

Sleeves

With 5.5 mm needles, cast on 82 sts and rib, p 2, k 2, for 3¼ in/8 cm. Then start pattern: k a-e and a-d, starting with chart Row 0 and 00. Dec as shown in Row 0 (to continue ribs into pattern) = 74 sts, then change to 6 mm needles and knit Rows 1-32 on chart. When pattern ends, k stockinette, inc 1 st at each side every 10th row 3 times = 80 sts. When stockinette measures about 7 in/18 cm, bind off 5 sts at beginning of each row until 20 sts remain. Bind off. Knit another, identical, sleeve.

Assembly

Block all pieces. Sew shoulder seams. **Hood:** On 6 mm needles, pick up the sts on holders = 68 sts. Place a marker on both sides of the 26 sts continued from the back and inc 1 st before and after the marker, using right and left leaning incs as shown in chart. Inc both sides of markers every second row 5 times = 88 sts. When hood measures about 11 in/28 cm, place a marker at center back and k 2 together before and SSK after marker every second row 3 times and then k 3 together and double SSK every second row 3 times. Bind off and sew top together. **Left front edge:** On 5.5 mm needles, pick up 147 sts along left front edge and hood and rib, k 2, p 2, for 1½ in/4 cm. Be sure to start and end with 2 k sts on right side of work. Bind off in ribbing. Mark positions of buttons: Place the lowest in the middle of the lower edge ribbing, the highest about at the middle of the 4th pattern repeat. Space the remaining five evenly between them. **Right front edge:** Follow directions for left front edge, but place buttonholes opposite the button markers. Begin k 2, p 2 ribbing but after ½ in/1.5 cm, knit buttonhole across 3 sts, opposite marker on the left front edge. Graft the little ribbed edges at top of hood together (see “Tips and Tricks”). Sew sleeves onto body, centering sleeve top on shoulder seam, and allowing 11¼ in/30 cm front and back for armhole. Sew underarm and side seam continuously. Sew sides and tack down bottom of pockets, invisibly, on the inside. Sew on buttons.



RAGNA

Medieval-look pullover with wide flaps and cap

A handsome pullover with wide flaps at the bottom to evoke thoughts of medieval times. The cap is a becoming finishing touch. The pattern is panels of little framed lattices bordered by ordinary cables that continue unbroken to the neckline and shoulders. The cables are repeated on the sleeves. To knit the sweater without slits in the bottom, simply cast on 160 sts and follow the rest of the directions. If you wish to knit it in another size, read how in “Sizes and Fit” on p. 121.

One size

Finished measurements: Bust, about 47½ in/120 cm. Length, about 27½ in/70 cm. Head circumference, 21½-22½ in/55-57 cm.

Materials: 10 balls Magpie Tweed + 1 ball for cap

Needles: 5 mm needles. 40 cm long 4 mm circular needle for neck.

Tension: 17 sts in stockinette on 5 mm needles = 4 in/10 cm. One pattern motif of 40 sts = 6 in/15 cm. Check your tension carefully, even while knitting the garment.

Back

With 5 mm needles, cast on 40 sts and work Row 0 of chart on p. 54 (*panel with little framed lattice*) = wrong side. Knit Rows 1-16 on the chart for about 6 in/15 cm. K first and last st as selvage sts. K three more identical pieces. Join these four tabs (= 160 sts) and knit straight up in pattern (knitting the former selvage sts as reverse stockinette) until work measures about 26½ in/68 cm, stopping at the end or the middle of a pattern repeat. Set the center 40 sts on a holder and knit each side separately. Knit 2 rows on each and bind off for shoulders.

Front

Knit like the back until the work is about 24 in/61 cm long, stopping at the end or the middle of a pattern repeat. Set the center 26 sts on a holder and knit each side separately. On the neck side, dec 1 st every other row 7 times. When front is as long as back, bind off shoulders. Repeat mirror-image on the other side.

Sleeves

On 5 mm needles, cast on 50 sts and set up cabled ribbing

following chart on p. 54: K 1 (selvage) st. *(K 8 sts right-twisted cable) x 3; *(k 8 sts left-twisted cable) x 3*; k selvage st. Knit cabled ribbing for 2¼ in/6 cm. Change to reverse stockinette, except for the 2 center cables, which continue to the shoulder. Inc 1 st each side every 4th row 15 times = 80 sts. When sleeve measures about 17¾ in/45 cm or desired length, bind off all sts. Knit another, identical, sleeve.

Assembly

Block all pieces. Sew shoulder seams. With a 4 mm circular needle, pick up 80 sts around the neck and set up cabled ribbing as on cuffs, taking care to continue cables at center front and back: (K 8 sts right-twisted cable) x 3; (k 8 sts left-twisted cable) x 3; then *(k 8 sts right-twisted cable) x 2; (k 8 sts left-twisted cable) x 2. K cabled ribbing for 3 in/8 cm. Bind off in pattern. Sew sleeves in place, matching center top to shoulder seam and allowing 9½ in/25 cm front and back for armhole. Sew underarm and side seams continuously, but leave a slit in each side as long as the other slits (about 6 in/15 cm).

Cap

With 5 mm needles, cast on 28 sts and knit pattern (center chart on p. 54) for about 21½ in/55 cm (5 whole repeats) with 2 k (selvage) sts each side. Bind off tightly.

Crown: Pick up 90 sts along one side and k flat: On back of work, k 1 row, increasing 8 sts, evenly distributed ([k 11, make 1] x 8), inside the selvage sts (= 98 sts). Purl 1 row, k 1 row. These three purl rows (on outside of work) are the beginning of the crown. Place markers dividing the sts into 8 equal groups of 12 sts each, and k stockinette 4 rows.



FJALAR

Sweater and hat

In this neat little sweater, I've put the pattern in the ribbing by alternating flipped bands of angular S-hitches from Ardre with plain ribbing. The collar is a panel of the same pattern overlapped at the front, and the same pattern appears in the warm and becoming hat. That the hat in this color is reminiscent of a chanterelle is an extra fillip.

Sizes: S (M) L

Finished measurements: Bust, 38½/98 (41¾/106) 44¾/114 in/cm. Waist, 26¾/68 (30¾/78) 33/84 in/cm. Length, 20¾/53 (21¼/55) 22½/57 in/cm. Head measurement for hat, 21½-22¾ in/55-58 cm.

Materials: 10 (11) 12 balls Fjord + 3 balls for hat.

Needles: 3 mm and 4 mm needles and 40 cm long 3 mm and 4 mm circular needles for hat.

Tension: 22 sts x 30 rows in stockinette on 4 mm needles = 4 x 4 in or 10 x 10 cm. 36 st pattern = 5 in/13 cm. Watch your tension carefully, and adjust needle size accordingly.

Please note: The first and last st on each row should be treated as a selvage st when you finish the sweater. That way when the sweater is sewn together the seam will be next to invisible.

Back

With 3 mm needles, cast on 98 (110) 118 sts and k chart on p. 84. First row is on wrong side of work. **Note:** Before starting pattern: **Size S:** (P 2, k 2) 3 times, k 1; work charted 36-st repeat twice, starting on Row 0 (= 72 pattern sts); k 1, (k 2, p 2) 3 times. **Size M:** P 1, work charted 36-st repeat 3 times starting on Row 0 (= 108 pattern sts), p 1. **Size L:** (P 2, k 2), k 1; work charted 36-st repeat 3 times starting on Row 0 (= 108 pattern sts), k 1, (k 2, p 2). K 5 rows in same pattern, then continue chart, for 2 vertical pattern repeats. Change to 4 mm circular needle and stockinette st. Inc 1 st each side every 12th row 7 times = 112 (122) 132 sts. When work measures 20/51 (20¾/53) 21½/55 in/cm, bind off at shoulder edge at beginning of every row: 9, 9, 9, 9 (8, 8, 8, 8, 9) 7, 8, 8, 8, 8, 7 sts (bind off each number on both sides). Then bind off the remaining 40 center sts.

Front

Knit like back until work measures 12½/32 (13¼/34) 14/36 in/cm. Mark the center 28 sts for the collar, put the

sts for the left side on a holder, and k the right side. Cast on a new selvage st at the neck edge (on the right side); k selvage st, k 3, p 2, k 2, k 16 sts of pattern panel, k 2, p 2, and k stockinette to end of row. Continuing, k into k sts, p into p, except for the 16 pattern sts. K these following the chart. On the next row, the base of the collar is formed with short rows (while repeating Rows 1 + 2 on chart): K 10 sts, yarn over, turn and knit back. K 20 sts (knit the yarn over with the st following it), yarn over, turn and k back. K 10 sts, yarn over, turn and knit back. After this, k straight up. When collar measures 3 in/8 cm, k 2 sts together just inside the 30 stockinette sts of the shoulder. Dec like this every 6th row altogether 6 times. When front is as long as back, bind off on shoulder side 9, 9, 9, 9 (8, 8, 8, 8, 9) 7, 8, 8, 8, 8, 7 sts at the beginning of every 2nd row. Cast on a new selvage st on the shoulder side of the neckband, and continue on these 30 sts, until it reaches the center back of the neck. Bind off. **Left side:** Pick up sts from holder and cast on 29 new sts on the neck edge. K like the right front except: K chart for left side on p. 84 (Begin short rows on the wrong side of the work and k 2 sts farther before turning.), and dec using SSK.

Sleeves

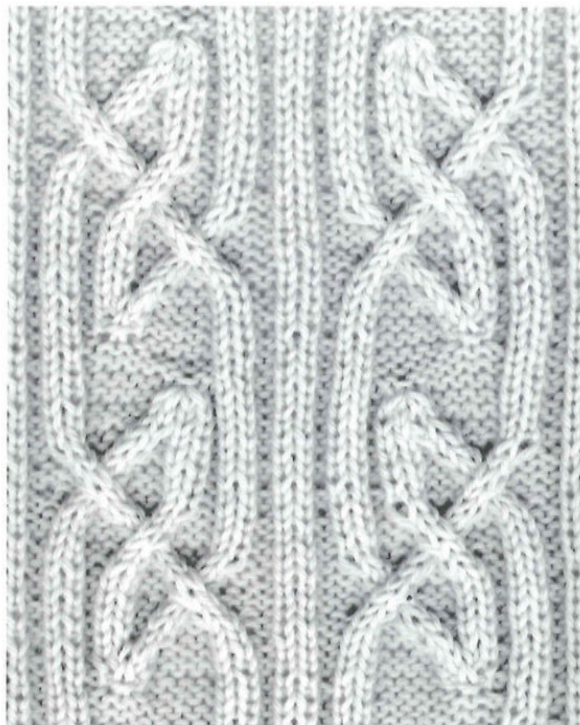
With 3 mm needles, cast on 46 (54) 62 sts and k pattern immediately. The first row is on the wrong side of work. Set up pattern before you begin the chart: (K 2, p 2) 1 (2) 3 times, k Row 0 of chart (38 sts), then (p 2, k 2) 1 (2) 3 times. K Row 0 five times, then Rows 1-26. After completing 1 vertical repeat, inc 1 st each side every 4th row altogether 7 times (= 60 (68) 76 sts). K the new sts in ribbing. After 2 vertical repeats, change to 4 mm needles and stockinette st. Inc 1 st each side every 4th row 20 times (= 100 (108) 116 sts). When sleeve measures 18/46 (17¾/45) 17¼/44 in/cm, bind off 6 sts at beginning of every row 16 times. Bind off. K an identical sleeve.

Assembly

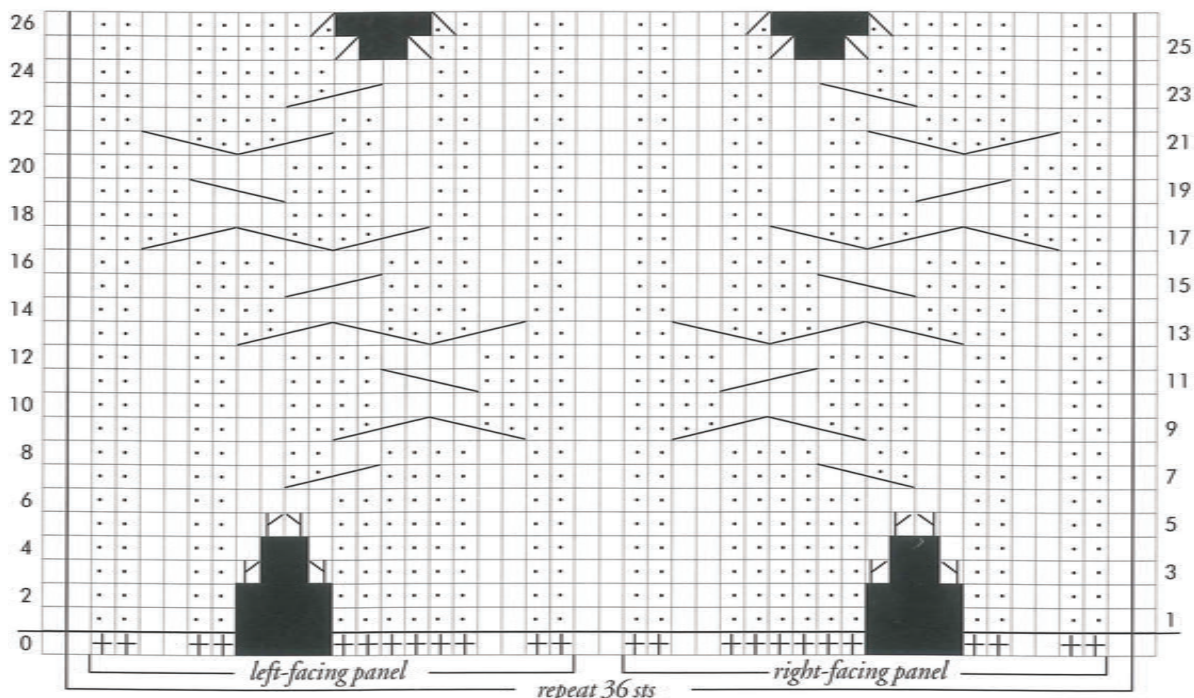
Block all pieces. Sew shoulder seams. Sew backs of collar together and tack to back of neck. Tack base of left side of neck band front invisibly inside right neck band front. Sew in sleeves, matching center top to shoulder seam and allowing 8½/22 (9½/24) 10¼/26 in/cm front and back for armhole. Sew underarm and side seams continuously.

Hat

With 3 mm circular needle, cast on 120 sts and k around in k 2, p 2 ribbing for 3 in/8 cm. Change to 4 mm circular needle and k a dec round as follows, starting between 2 knit sts: *K 1, p 2, SSK, p 6, k 2 together, k 1, p 2, k 1, and repeat from * = 108 sts, and the knit ribs of the ribbing should match the knit ribs in the pattern. K Row 1 of chart for 8 rnds, k into k, p into p. Now k Rows 1-16 and begin to inc (make 1) between each right and left panel, that is, on the central rib between each 2 panels. Make a right inc before the ribbing and a left inc after the ribbing (= 12 inc sts per rnd). *Inc every other rnd twice, then k 2 rnds without increasing. Repeat from * four times = 201 sts. K Rows 1 and 2 again to finish. Then k 1 rnd and p 3 rnds (the edge of the crown). **Crown:** K in stockinette. Divide work into 6 parts, alternately 34 and 33 sts each. Dec by SSK at the beginning and by k 2 together at the end of every section every other rnd until 12 sts remain. K 2 sts together around, break yarn, and pull tail through remaining sts. Work tail into wrong side.



The S-Hitch can also be knitted in an angular version. Above: Pattern swatch with left and right facing s-hitches knitted using the chart below, the same used for Fjalar. Row 0 is for Fjalar only. Rows 1 and 2 can be knitted once or repeated indefinitely.



Front

With 2.5 mm needles, cast on 86 (90) 94 (98) sts and rib, p 2, k 2, for 1½/4 (1½/4) 2/5 (2/5) in/cm. The first row is on wrong side of sweater, but each row should start and finish with k 2 on front side of work. Change to 3 mm needles and k reverse stockinette. When work measures 4/10 (4¼/11) 4¾/12 (5½/14) in/cm, k a *little happiness sign* in center, following chart on p. 30. At 7¾/20 (8¼/21) 9/23 (9¾/25) in/cm, k runic inscription on center 52 sts—17 (19) 21 (23) sts from edges. When work measures 12½/32 (13¼/34) 14¼/36 (15/38) in/cm, put center 24 (24) 26 (26) sts on a holder and k each side separately. On neck side, dec 1 st every second row 5 times. When work measures 15¾/40 (16½/42) 16½/42 (17½/45) in/cm, bind off shoulders.

Back

Knit like front but with no patterning. The neckline begins only when work measures 14¼/36 (15/38) 15¾/40 (17/43) in/cm. Then put center 30 (30) 32 (32) sts on a holder and k each side separately. Dec 1 st on neck edge every second

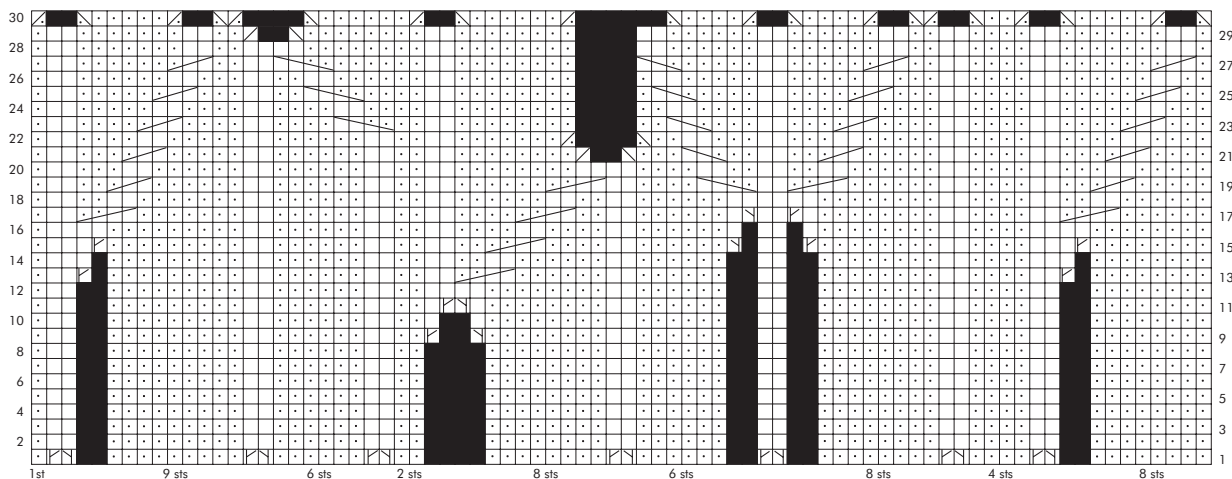
row twice. Bind off shoulders at same height as front.

Sleeves

With 2.5 mm needles, cast on 42 (42) 46 (46) sts and rib, p 2, k 2 for 2 in/5 cm. The first row will be on the wrong side, but *right side of work* starts and ends with 2 k sts, so start with p 2. Change to 3 mm needles and reverse stockinette. Inc both sides every 4th row 16 (18) 18 (21) times = 74 (78) 82 (88) sts. When sleeve measures 9¾/25 (11/28) 12½/32 (13¾/35) in/cm, bind off. K another identical sleeve.

Assembly

Block all pieces to measure between damp towels and let the whole pile dry. Sew the shoulder seams. **Neck edge:** With 2.5 mm circular needle, pick up 90 (90) 94 (94) sts around the neck and rib, k 2, p 2 for 1 in/2.5 cm. Bind off in ribbing. Sew sleeves in, matching shoulder seam to center point of sleeve top and allowing 6¼/16 (6½/17) 7/18 (7½/19) in/cm front and back for the sleeve. Sew side and underarm sleeves continuously.





Fafner

Intertwined rune animal cushion
with mat knot border

In Fafner—a dwarf who was changed into a dragon—I have combined pretty much all the techniques presented in the book. I put a dragon-like animal in the center, but another motif, like a happiness sign or a large mat knot (p. 44) would also be handsome. Or, you could cover it with the allover version of Bjärs hitches (p. 28).

Finished measurements: About 15¾/40 x 15¾/40 in/cm.

Materials: 200 g of U84.

Needles: 4 mm.

Tension: 20 sts in stockinette on 4 mm needles = 4 inches or 10 cm. Check your tension by knitting a swatch before you start the project.

Pattern: Knitted following chart on p. 106 and p. 109.

Center panel

Cast on 50 sts and k reverse stockinette for 1¼ in/3 cm. Next 28 rows: K 18 sts, then follow chart on p. 106 for 26 sts, and end with 18 sts. On Row 29, put the 4 sts marked * on a holder in front of work, then cast on 2 new sts behind them. Continue in reverse stockinette until work measures 9¾ in/25 cm. Bind off. Put the 4 sts from the holder on a needle and knit the left-facing dragon head.

Framing

Cast on 28 sts. *K lattice pattern Rows 1-8 for about 9¾ in/25 cm (the length of a side on the center panel), then k corner following charts (pp. 108-109). Repeat from * 3 more times until you have 4 corners.

Assembly

Block pieces to measure, lay a damp cloth over them, and let the whole pile dry completely. Pin dragon's head to shape in place and tack down with a few small, invisible stitches (see p. 106). Graft the 2 mitered ends together. Sew the center panel to the framing the same way. Cut a back from fabric, leaving about ½ in/1.5 cm seam allowance. Press/fabric seam allowances in, then overcast the front and back together inside the selvage sts.

Left-facing dragon head

Put the 4 sts from the holder on a needle and cast on a selvage st on each side. Start on the right side, and p all wrong-side rows. **Rows 1, 3, 5:** K 6. **Row 7:** K 3, turn. **Row 8:** P. **Row 9:** K 1, inc 1, k 5 = 7 sts. **Row 11:** Inc 1 st in the second st of the row = 8 sts. **Row 13:** Inc 1 st in the second st of the row = 9 sts. **Row 15:** K 2 together, k 5, SSK = 7 sts. **Row 17:** K 3, yarn over, k 3. **Row 18:** P 4, slip the yarnover and make a yarnover, p 3. **Row 19:** K 2, slip the next st, k the 2 yarnovers together and pass the slipped st over, k 4. **Row 21:** K 2, double SSK, k 2. **Row 23:** K 2, SSK, k 1. **Row 25:** K 4. **Row 26:** P the first 2 sts together and bind off.

Right-facing dragon head

Pick up 4 sts from holder; cast on a selvage st at both edges. Start on the right side, and p all wrong-side rows. **Rows 1, 3, 5:** K 6. **Row 6:** P 3. **Row 7:** Turn and k back. **Row 9:** Inc 1 st in the next to last st = 7 sts. **Row 11:** Inc 1 st in the next to last st = 8 sts. **Row 13:** Inc 1 st in the next to last st = 9 sts. **Row 15:** K 2 together, k 5, SSK. **Row 17:** K 4, yarn over, k 3. **Row 18:** P 3, slip yarnover, make a yarnover, p 4. **Row 19:** K 4, k the two yarnovers together with the next st, k 2. **Row 21:** K 2, k 3 together, k 2. **Row 23:** K 1, k 2 together, k 2. **Row 25:** K 4. **Row 27:** K first 2 sts together and bind off.

The afghan is made by sewing together many pattern swatches knitted for the book.

Yarn Substitutions

Note that when you substitute yarn, the suggested needle size may no longer apply. Be sure to check that the tension is correct or your garment will end up with different measurements. Differences in yarn consumption are estimates; be sure to buy enough yarn to complete the project. If in doubt, consult your local store for advice.

Yarns from the Elsebeth Lavold Designer's Choice yarn line are distributed by Knitting Fever Inc. (www.knittingfever.com) unless otherwise specified.

Fjalar

Original yarn: 136 yd/125 m / 50 g
Suggested substitute: **Silky Wool**, 191 yd/175 m / 50 g
You'll need about 30% less yarn.

Fjörgyn

Original yarn: **Lopi**, 100% wool, 109 yd/100 m / 50 g
Distributed by Westminster Fibers
www.westminsterfibers.com

Freja

Original yarn: 218 yd/200 m / 50 g
Suggested substitute: **Silky Wool**, 191 yd/175 m / 50 g
You'll need about 20% more yarn.

Frode

Original yarn: **Smart**, 100% wool, 109 yd/100 m / 50 g
Distributed by Swedish Yarn Imports Ltd.
www.swedishyarn.com
Suggested substitute: **Classic Al**, 109 yd/100 m / 50 g

Harald

Original yarn: 82 yd/75 m / 50 g
Suggested substitute: **Calm Wool**, 82 yd/75 m / 50 g

Hermod

Original yarn: 75 yd/69 m / 50 g
Suggested substitute: **Silky Wool XL**, 103 yd/95 m / 50 g
You'll need about 25% less yarn.

Hervor

Original yarn: 147 yd/135 m / 50 g
Suggested substitute: **Tweedy Wool**, 136 yd/125 m / 50 g
You'll need about 10% more yarn.

Rafn

Original yarn: 82 yd/75 m / 50 g
Suggested substitute: **Classic Al**, 109 yd/100 m / 50 g
You'll need about 30% less yarn.

Kysmik

Man's vest
Original yarn: 109 yd/100 m / 50 g
Suggested substitute: **Baby Llama**, 109 yd/100 m / 50 g

Child's sweater

Original yarn: 218 yd/200 m / 50 g
Suggested substitute: **Silky Wool**, 191 yd/175 m / 50 g
You'll need about 20% more yarn.

Ragna

Original yarn: 82 yd/75 m / 50 g
Suggested substitute: **Silky Wool XL**, 103 yd/95 m / 50 g
You'll need about 20% less yarn.

Siv

Original yarn: 218 yd/200 m / 50 g
Suggested substitute: **Silky Wool**, 191 yd/175 m / 50 g
You'll need about 20% more yarn.

Vebjörg

Original yarn: 109 yd/100 m / 50 g
Suggested substitute: **Baby Llama**, 109 yd/100 m / 50 g

Vigdis

Original yarn: 54 yd/50 m / 50 g
Suggested substitute: **Tweedy Wool**, 136 yd/125 m / 50 g
Work with 2 strands of yarn held together.
You'll need about 20% less yarn.

Suppliers

See yarn substitutions on page 128. Yarns from the Elsebeth Lavold Designer's Choice yarn line are distributed by Knitting Fever Inc. (www.knittingfever.com) unless otherwise specified. Find a shop near you, or contact Knitting Fever directly (knittingfever@knittingfever.com).

Westminster Fibers

8 Shelter Drive
Greer, SC 29650
phone 800-445-9276
web www.westminsterfibers.com
e-mail info@westminsterfibers.com

Nordic Yarn Imports

(In the US: **Swedish Yarn Imports**)
PO Box 2069
Jamestown, NC 27282
phone 800-331-5648
web www.swedishyarn.com
e-mail info@swedishyarn.com

Webs—America's Yarn Store

75 Service Center Road
Northampton, MA 01060
phone 800-367-9327
web www.yarn.com
e-mail customerservice@yarn.com

Jimmy Beans Wool

1312 Capital Blvd., #103
Reno, NV 89502
phone 775-827-9261
web www.jimmybeanswool.com
e-mail support@jimmybeanswool.com

River Colors Studio

1387 Sloane Ave.
Lakewood, OH 44107
phone 216-228-9276
web www.rivercolors.com
e-mail info@rivercolors.com

Little Knits

3200 Airport Way S.
Bldg. 8, Suite 110
Seattle, WA 98134-2141
phone 800-877-5852
web www.littleknits.com
e-mail customerserv@littleknits.com

An indispensable milestone in twentieth-century knitting literature.



FEATURING:

- Step-by-step instructions
- Charts and beautiful color photographs
- 14 projects, 60 Viking motifs, and countless sources of inspiration

\$22.95 USD

ISBN 978-1-57076-726-5

52295



9 781570 767265

www.trafalgarbooks.com