

DUPLICATION PROHIBITED
by copyright holder

Scandinavian Sweaters



Over 25
Stunning
Patterns to
Knit

© Kristin Wiola Ødegård, and
Trafalgar Square Books

Kristin Wiola Ødegård

First published in the United States of America
in 2020 by
Trafalgar Square Books
North Pomfret, Vermont 05053

Originally published in Norwegian as *Wiolakoster*.

Copyright © 2018 Kristin Wiola Ødegård and Gyldendal Norsk Forlag AS
English translation © 2020 Trafalgar Square Books

All rights reserved. No part of this book may be reproduced, by any means,
without written permission of the publisher, except by a reviewer quoting brief
excerpts for a review in a magazine, newspaper or web site.

The instructions and material lists in this book were carefully reviewed by the
author and editor; however, accuracy cannot be guaranteed. The author and
publisher cannot be held liable for errors.

ISBN: 978-1-57076-992-4
Library of Congress Control Number: 2020940162

Design: www.jensendesign.no, Ingunn Cecilie Jensen
Photography: Sofie Ødegård
Technical Consultant: May Britt Bjella Zamori
Charts: May Britt Bjella Zamori and Denise Samson (Pullovers in the Round)
Knitting and Crochet School: Ingunn Cecilie Jensen, Anne Vines, Laila Mjøs,
Ingse Revold and Synnøve Smedal
Translation into English: Carol Huebscher Rhoades

Printed in Hong Kong
10 9 8 7 6 5 4 3 2 1

TABLE OF CONTENTS

BEEHIVE CARDIGAN	8
URBAN PULLOVER	14
ROUNDED FLOWERS CARDIGAN (LIGHT GRAY)	18
HURLY BURLY PULLOVER	24
CRISS-CROSS CARDIGAN	28
CLOVER CARDIGAN (YELLOW)	34
RETRO PULLOVER FOR HIM AND HER	40
WIOLA CARDIGAN	46
SPOTTED IN SETESDAL PULLOVER	52
NEW AUTUMN BLOCKS CARDIGAN	58
PULLOVER WITH ROUNDED YOKE PATTERN	66
TAKE FIVE SWEATER-JACKET	70
BANDIT CARDIGAN FOR CHILDREN	76
CATHEDRAL DOME	82
ROSE-COVERED WRIST WARMERS	86
SWEATER-JACKET WITH PATTERNED ROUND YOKE	92
DANCE AROUND CARDIGAN	98
ROUNDED FLOWERS (CHARCOAL GRAY)	104
BANDIT CARDIGAN IN NEW COLORS	110
DAY ROSE SWEATER-JACKET	118
KNITTED SHAWL WITH CROCHET LACE EDGING	124
DEFIANT CARDIGAN	128
OUT AND ABOUT SWEATER-JACKET	136
DANCE AROUND PULLOVER	142
RETRO SWEATER-JACKET WITH ROUND YOKE SHAPING	148
ISABELLE CARDIGAN	154
AUTUMN BLOCKS CARDIGAN	162
AUTUMN BLOCKS CARDIGAN FOR CHILDREN	170
CLOVER CARDIGAN (CHARCOAL GRAY)	176
KNITTING SCHOOL AND CROCHET TECHNIQUES	182
YARN INFORMATION	211
ACKNOWLEDGMENTS	212

Rounded Flowers Cardigan

LIGHT GRAY

THIS CARDIGAN IS KNITTED FROM THE TOP DOWN, WITH A STEEK THAT IS LATER CUT OPEN FOR THE CENTER FRONT. THE RIBBED NECKBAND AND SHORT ROWS TO RAISE THE BACK NECK ARE WORKED BACK AND FORTH BEFORE THE BODY IS WORKED IN THE ROUND ON A CIRCULAR NEEDLE.



The top section of the pattern is worked with a fluffy yarn—Mohair Lux, in the example shown—for a fine contrast with the wool. **Note:** The cardigan is worked in stockinette, but, as you'll see on the chart, the fluffy yarn is purled on some rounds.

SKILL LEVEL

Experienced

SIZES

S (M, L, XL, XXL)

FINISHED MEASUREMENTS

Chest: 36 (39½, 42¼, 45¾, 48½) in / 91 (100, 107, 116, 123) cm

Total Length: 22¾ (24, 25½, 26¾, 27½) in / 58 (61, 65, 68, 70) cm

Sleeve Length: 18½ (18½, 19, 19¼, 19¼) in / 47 (47, 48, 49, 49) cm

MATERIALS

Yarn

- CYCA #2 (sport, baby) Rauma Garn Finull PT2 (100% Norwegian wool, 191 yd/175 m / 50 g)
- CYCA #0 (lace) Lang Yarns Mohair Lux (77% mohair, 23% silk, 191 yd/175 m / 25 g)
- CYCA #2 (sport, baby) Sandnes Garn Tove (100% Norwegian wool, 175 yd/160 m / 50 g)

Yarn Colors and Amounts

- MC - Finull Gray 404: 400 (450, 450, 500, 500) g
- Mohair Lux Rust-Red 62: 25 g (all sizes)
- 50 g each of the following Finull colors for each size:

- ◆ Dark Powder 420
- ◆ Light Powder 4187
- ◆ Yellow-Green 417
- ◆ Rust/Brown 425
- ◆ Peach 4087
- ◆ Natural Beige 4078
- Sandnes Garn Tove Red-Brown 4044: 50 g (all sizes)

Needles

- U. S. size 2.5 / 3 mm: circulars 16, 24, and 32 in / 40, 60, and 80 cm; set of 5 dpn.
- U. S. size 4 / 3.5 mm: 24 in / 60 cm circular for colorwork yoke.

Crochet Hook

U. S. size C-2 / 2.5 mm for bobble edging

Notions

- 10-13 buttons, ⅝ in / 15 mm in diameter (I used vintage buttons from my collection for the version shown here)
- Ribbon, 51¼-59 in / 130-150 cm long, in color matching sweater, to cover raw and cut edges (I used Viola ribbon, #6, for the version shown here)

GAUGE

25 sts x 30 rnds in colorwork pattern on larger needles = 4 x 4 in / 10 x 10 cm.

25 sts x 30 rnds in stockinette on smaller needles = 4 x 4 in / 10 x 10 cm.

Adjust needle size to obtain correct gauge if necessary.

TECHNIQUES

Buttonholes

Yo, k2tog. On the following row, knit the yarnover.

Crocheted Bobble Edging

The edging is crocheted on the wrong side. Attach yarn at lower edge of left front with 1 sl st. Work a 3-hdc cl in same st, *skip 1-2 sts, 1 sl st in next st, 3 hdc cl in same st as sl st*. Rep * to * along left front band, around neckband, and down right front band.

YOKE

Begin at top with neckband:

With MC and smaller short circular, CO 97 (107, 117, 127, 127) sts. Work back and forth in k1, p1 ribbing for ¾ (¾, 1¼, 1¼, 1¼) in / (2, 3, 3, 3) cm.

On the next (WS) row, begin short rows to raise back neck: P59 (64, 69, 74, 74); turn.

K21; turn. P31; turn.

Continue turning the same way, with 10 more sts before each turn. On the last rows, the stitch count is reduced to 8 (3, 8, 3, 3) sts on each side.

Knit 1 row over all the sts, *at the same time*, increasing 23 (23, 23, 23, 33) sts evenly spaced across = 120 (130, 140, 150, 160) sts.

7 new sts for steek (see page 186) at beginning of next row, changing to larger circular if necessary for colorwork gauge; join to work in the round. Work following chart on page 23. After completing charted





Shape neck by binding off 2 sts at each side of neck on every other row 2 (2, 2, 3, 3) times. Continue back and forth in pattern to total length of body. BO knitwise.

SLEEVES

With Curry and smaller dpn, CO 50 (54, 58, 62, 66) sts. Divide sts onto dpn and join. Work around in k1, p1 ribbing for 1½ (2, 2½, 2½, 2¾) in / 4 (5, 6, 6, 7) cm. Change to larger dpn and work in pattern following the chart. Count out from the arrow for center of sleeve to determine beginning of rnd for chosen size. Make sure pattern is centered on sleeve. Always purl last st of rnd to indicate center of underarm.

Increase 1 st on each side of purled center st every ¾ in / 2 cm until there are 96 (106, 110, 116, 120) sts total. Work new sts into

pattern. Change to short circular when there are enough sts to fit around.

When sleeve is approx. 18½ (19¾, 20½, 21, 21¼) in / 47 (50, 52, 53, 54) cm long, end on rnd indicated on chart. Turn sleeve inside out and work a ¾ in / 2 cm wide facing in stockinette with Dark Blue-Gray. BO loosely.

Make second sleeve as for the first.

FINISHING

Machine-stitch 2 zigzag lines on each side of center armhole steek st. Carefully cut steek open up center st.

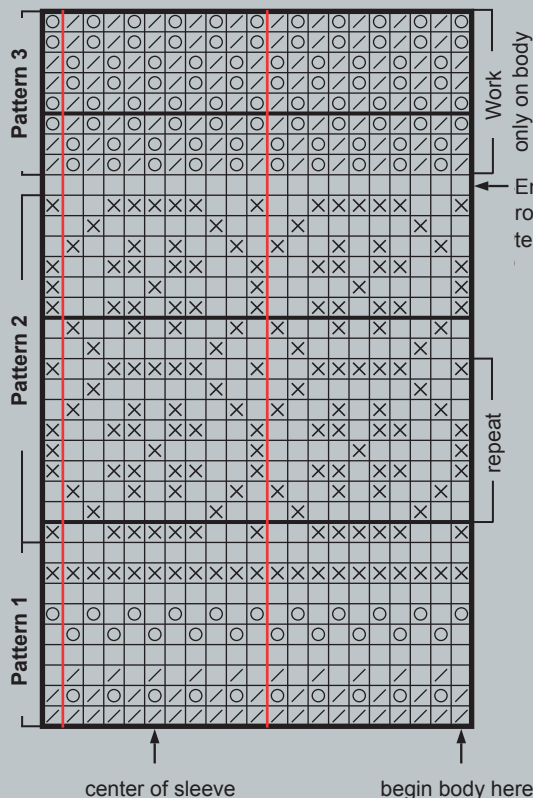
Join shoulders. Seam underarms.

Sew down sleeve top facing over raw edges.

NECKBAND

With RS facing, Curry and smaller circular, pick up and knit 1 st in each st around neck. Make sure stitch count is a multiple of 2 sts. Pm for beginning of rnd. Work around in k1, p1 ribbing for 1½ in / 4 cm. BO loosely in ribbing.

Weave in all ends neatly on WS.



Symbols Key

- ☐ = Curry
- = Light Brown
- ⊗ = Light Blue-Gray
- = Dark Blue-Gray
- || = 1 repeat





DUPLICATION PROHIBITED
by copyright holder



© Kristin Wiola Ødegård, and
Trafalgar Square Books



DUPLICATION PROHIBITED
by copyright holder



© Kristin Wiola Ødegård, and
Trafalgar Square Books







DUPLICATION PROHIBITED
by copyright holder



© Kristin Wiola Odgård, and
Trafalgar Square Books



DUPLICATION PROHIBITED
by copyright holder



© Kristin Wiola Ødegård, and
Trafalgar Square Books

KNITTING SCHOOL

KNITTING NEEDLES AND OTHER TOOLS

Straight needles are used for working back and forth, on, for example, a scarf or the front or back of a sweater or other large garment.

Circular needles are used for working in the round. It has also become quite common to use a circular needle for working back and forth, on, for example, a baby blanket, shawl, or other large item for which straight needles are too short.

Double-pointed needles (dpn) or a set of them (there are usually 5 needles in a set) are for working around a small circumference, such as cuff ribbing, mittens, socks, and sleeves.

You can buy any of these types of needles in a range of sizes and lengths. The size of most needles is now given in millimeters, based on the diameter of the needle. The size is usually printed on the needle or on the case. However, size numbering systems vary. In the U. S., the smaller the size, the smaller the needle.

A stitch holder can be a long safety pin or a bent knitting needle. It can hold a number of stitches while you knit other stitches and is used, for example, for working cables, holding neck stitches, or when making pockets.

A needle gauge has a number of holes. By inserting a needle in the holes, you can easily determine the needle size. Most needle gauges also have a side or two marked in inches and/or centimeters so you can use it to measure stitch and row gauge.

THE YARN WE KNIT WITH

While knitting yarn used to be produced with wool or cotton, these days, we have a huge range of fibers to choose from. These fibers often have their own special characteristics, which are well worth paying attention to, so that you can make finished garments with the particular qualities you want.

For example, it is usually desirable to use machine-washable yarns for baby garments.

Cotton: Cotton garments are durable. Due to the fiber structure, cotton garments can easily get dirty; however, they can also be washed at a high temperature.

Cotton garments have very good qualities when it comes to absorbing moisture and releasing sweat and dampness from the fabric.

Cotton is not as elastic as wool, and cotton garments easily lose their shape if they are knitted too loosely or on needles that are too large.

Wool: Garments made with wool are elastic, durable, and warm. Wool garments have a large capacity to absorb moisture without feeling damp and clammy. This is very important for sportswear garments.

The structure of wool fibers means that dirt does not easily adhere to the surface, and any dirt on the surface can easily be washed off. It takes no more than a gentle washing to clean wool garments.

Synthetic Fibers: Follow the washing instructions on the ball band. Be careful when tumble drying and ironing!

Ball Band and Information on the Band

The ball band (the strip of paper around the skein or ball of yarn when you buy it) lists information about the yarn and fiber, recommended uses, and washing instructions.

After the yarn logo, you should find all the information you need on the ball band. Sometimes information is also printed on the inside of the band, so remember to check both sides.

In addition to the name of the yarn and the mill or factory where the yarn was produced, you should find the weight of the yarn. The weight is approximate, as it includes the natural moisture in the yarn. The length of the yarn in meters and/or yards in the skein is also normally listed on the ball band.

Whether the yarn consists of several types of fiber or is only synthetic, the percentage of each fiber should be listed.

Needle size and gauge are very important when working a pattern. The ball band lists recommended needle sizes and gauge suitable for that yarn.