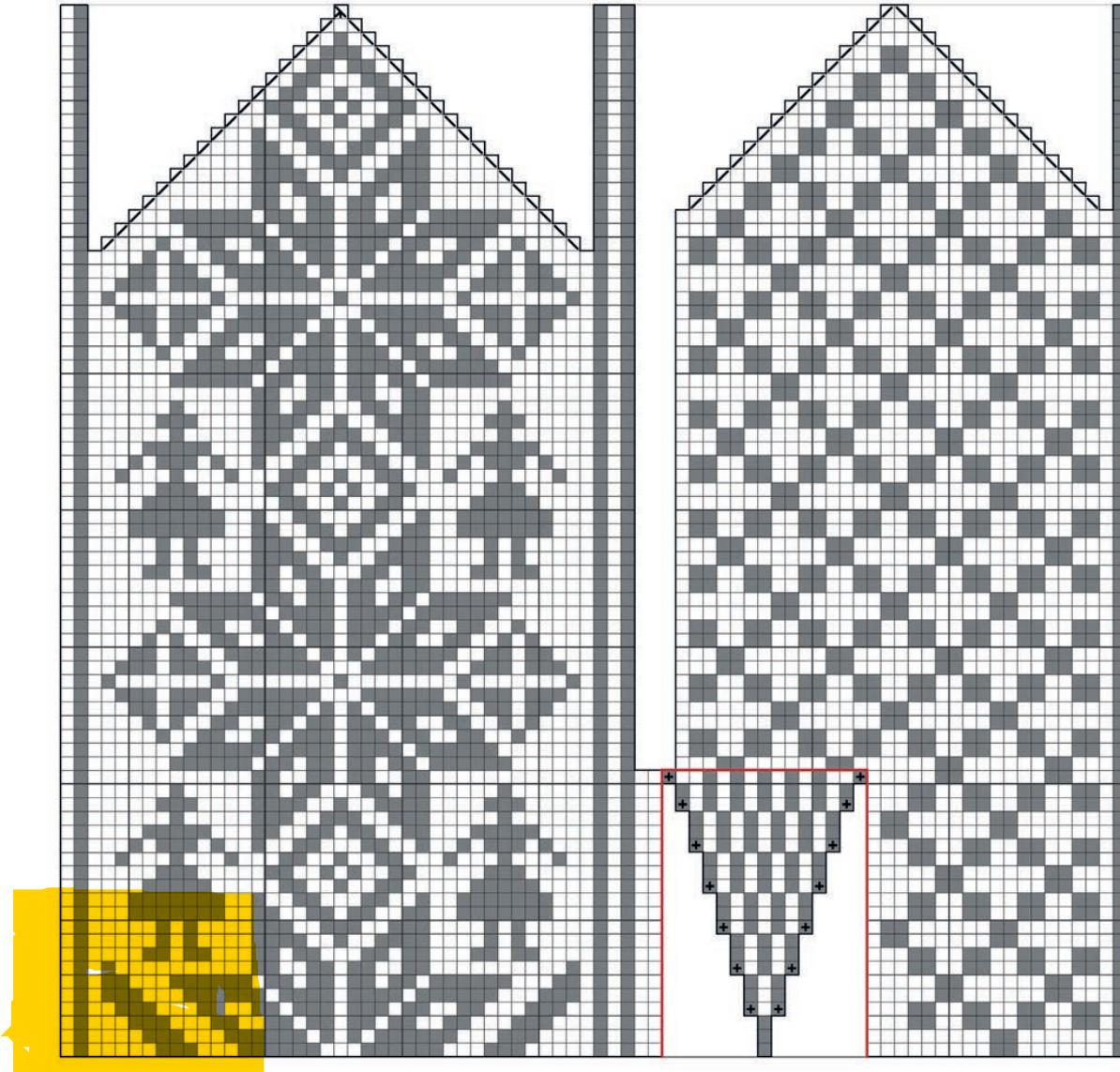


CHART, LEFT MITTEN

D. LEFT MITTEN HAND



SYMBOLS

- Color 1
- Color 2
- k2tog
- ssk
- k3tog, centered
- yarn over
- purl
- M1
- thumb gore

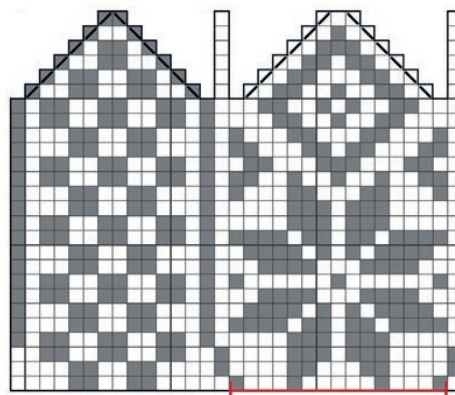
B. WRIST
PATTERN BAND



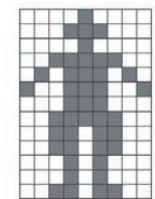
A. "CROOKED
PATH"



E. THUMB



Alternative
chart



*Replace women
in chart with men,
or use both!*