

# ARAN PROJECT 1 SCARF \*

The Aran cable design has a 12-row repeat pattern. It includes two basic cables (C4B and C6B) and a 3-st cable crossing knit and purl stitches (C3R and C3L). It is knitted on a reverse stockinette stitch background with 4 sts of garter stitch at each side to form a border. The pattern is given in chart form showing the 12-row repeat (see page 123 for reading a chart).

## SIZE

Approx 8in (20cm) wide x 78¾in (200cm) long.

## YARN

6 x 1¾oz/50g balls Rowan Hemp Tweed Pine 135. CYCA#4

## NEEDLES

Pair size 7 (4.5mm) needles.  
Cable needle.

## GAUGE

19 sts and 25 rows to 4in/10cm square over st st using size 7 (4.5mm) needles.

## ABBREVIATIONS

**C4B** Slip next 2 sts on cable needle and hold at back of work, k2, then k2 from cable needle.

**C6B** Slip next 3 sts on cable needle and hold at back of work, k3, then k3 from cable needle.

**C3R** Slip next st on cable needle and hold at back of work, k2, then p1 from cable needle.

**C3L** Slip next 2 sts on cable needle and hold at front of work, p1, then k2 from cable needle.

**slIP ytf** Slip one st purlwise with yarn in front of work.

See also page 127.

## SCARF

Using US 7 (4.5mm) needles cast on 54 sts.

**Rib row 1 (RS)** SlIP ytf, k3, p2, \* [k2, p2] twice, [k3, p2] twice\*; rep from \* to \* once more, [k2, p2] twice, k4.

**Rib row 2** SlIP ytf, k5, \* [p2, k2] twice, [p3, k2] twice\*; rep from\* to \* once more, [p2, k2] twice, k4.

Repeat these 2 rows three more times.

Cont to work in patt from Chart.

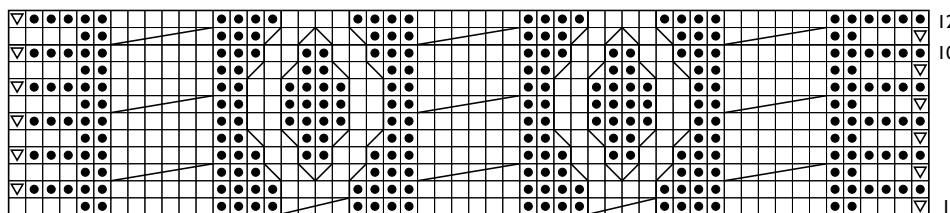
**Chart row 1 (RS)** SlIP ytf, k3, p2, k6, \* p4, C4B, p4, k6 \*, rep from \* to \*once more, p2, k4.



66

### KEY

- RS, K  
WS, P
- ◼ RS, P  
WS, K
- ▧ C3R
- ▨ C3L
- ▩ C4B
- C6B
- ◻ slIP ytf on  
RS and WS



54 sts