

FURNA

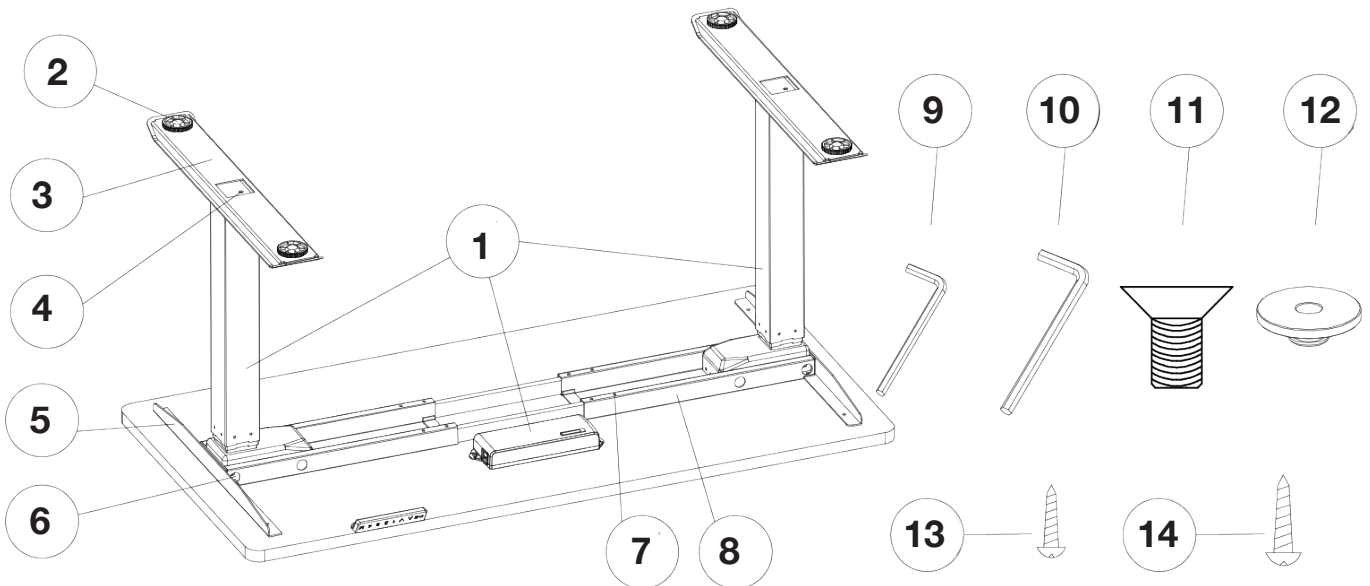
FURNA E2



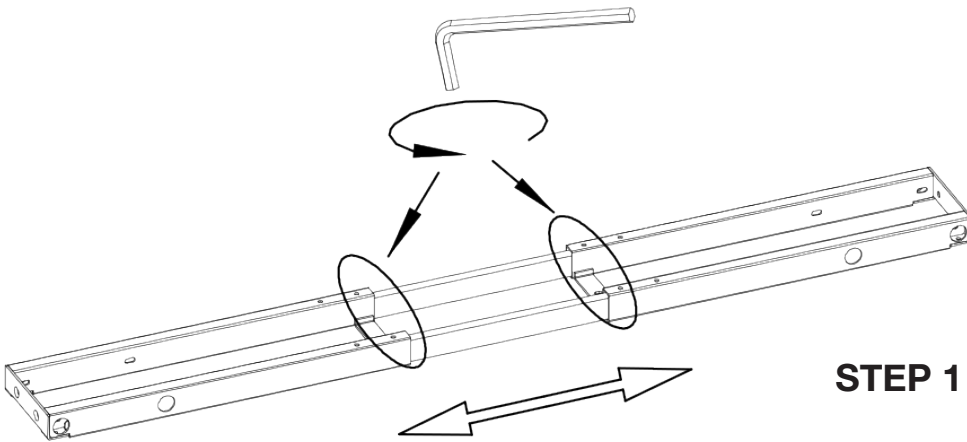
ASSEMBLY GUIDE
MODEL FNAE2FRM18XXX

PARTS & TOOLS LIST

NO	Name	Qty	NO	Name	Qty
1	Lifting System	1set	9	4mm Hex Spanner	1set
2	Foot Pad	4	10	5mm Hex Spanner	1
3	Foot Margin	2	11	M6x12 Screw	8
4	M8x16 Screw	8	12	Rubber Cushion	6
5	Bracket	2	13	ST3 5x19 Screw	2
6	M6x14 Screw	8	14	ST4 8x19 Screw	8
7	M6X10 Screw	8			
8	Support Beam	1			



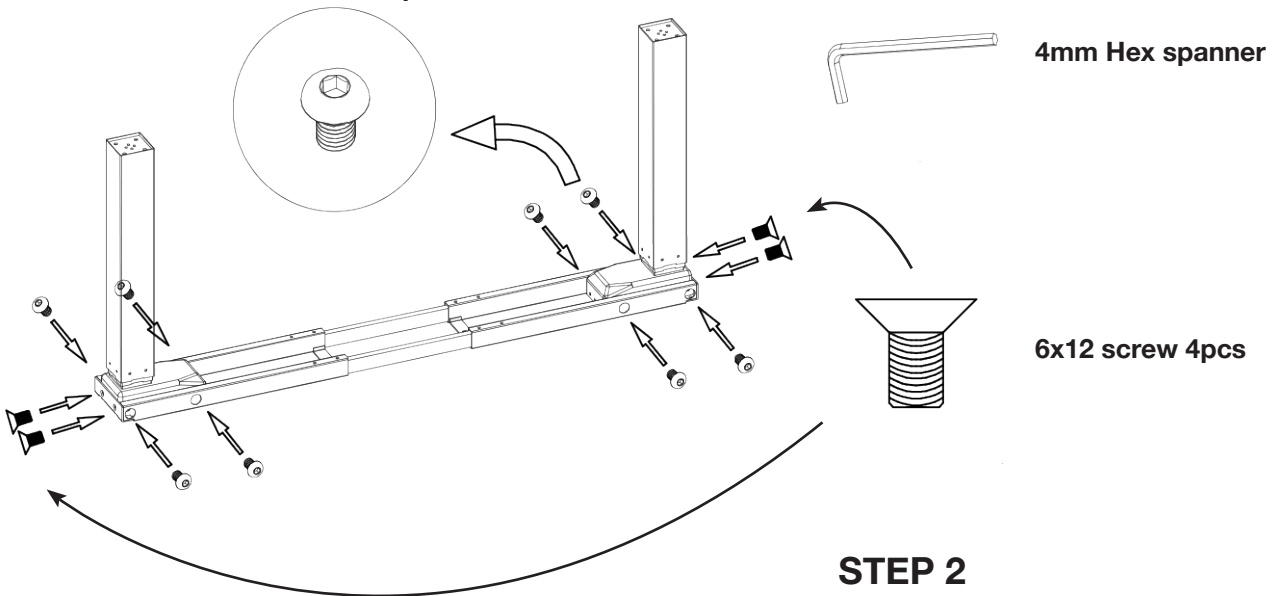
4mm Hex spanner



STEP 1

Loosen the 4 screws using the hex spanner, so the frame can adjust to the desk top size as/when needed.

6x14 screw 8pcs

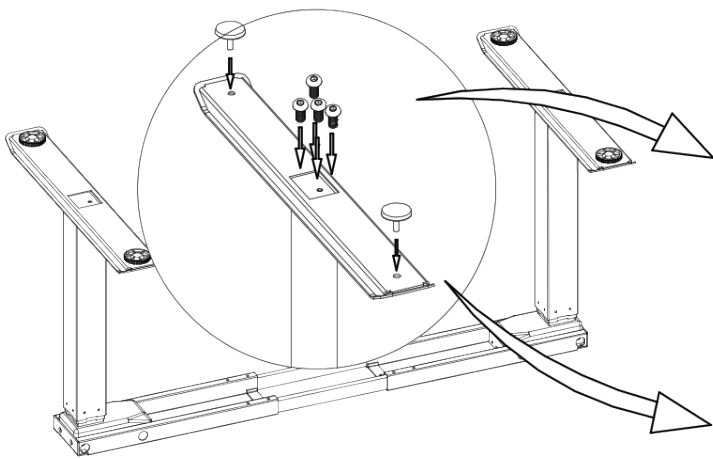


4mm Hex spanner

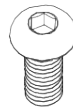
6x12 screw 4pcs

STEP 2

Attach legs to the support beams using the parts shown



4mm Hex spanner



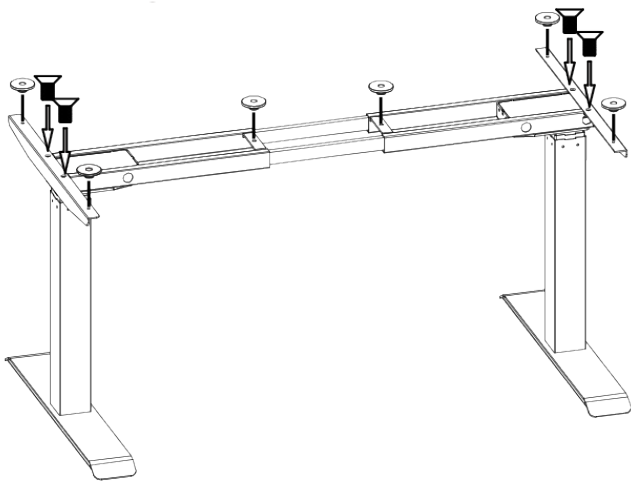
8x16 screw 8pcs



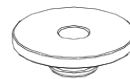
Foot pad 4pcs

STEP 3

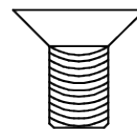
Attach the feet and then the foot levelling pads



4mm Hex spanner



Rubber Cushion 6pcs



6x12 screw 4pcs

STEP 4

Switch the frame to the upright position and attach the brackets.



STEP 5

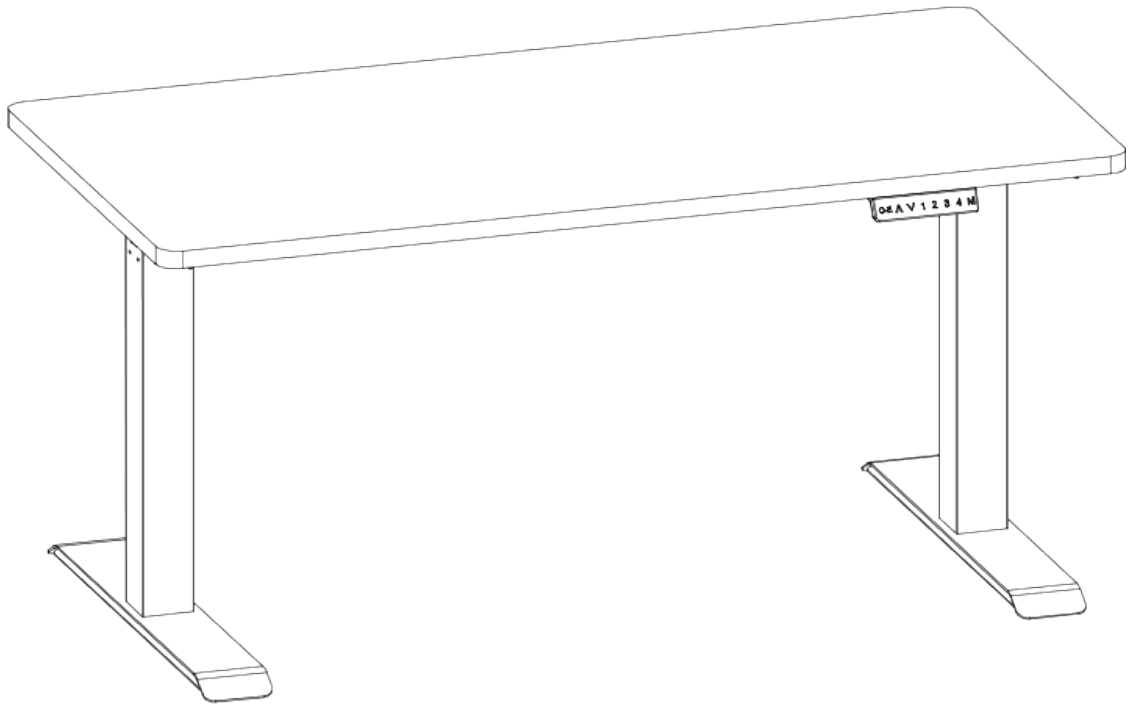
Put the frame upside down onto the desk top in a centered position. Adjust the frame width to suit the desk top (we suggest around 5cm from each side)

Once in position, tighten the M6x10 screws to set the frame width

STEP 6

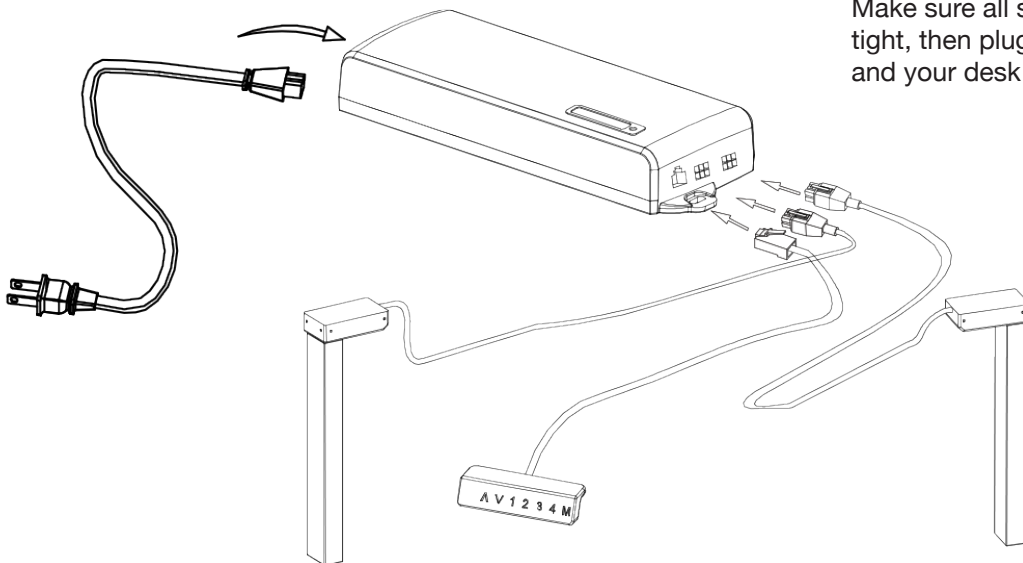
Screw in the frame and control box to the under side of the desk top as shown using Part 14 wood screws. Position of control box is flexible based on preference

Screw in the control button panel on the front, under side of the desk top using Part 13 wood screws



STEP 7

Make sure all screws and bolts are tight, then plug in cables as shown and your desk is ready to be used!





Need help?

Get in touch by emailing contact@furna.co.uk or
by using our Live Chat feature on our website!