

A new smart option in Legionella monitoring & control



Legionella control and monitoring is extremely important and a statutory, part of the UK health and safety compliance.

The general method to undertake compliance are procedures, regulations and paper logbooks which make it unnecessarily complex, time consuming, expensive and still open to errors that could prove fatal.

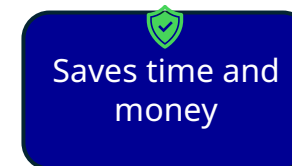
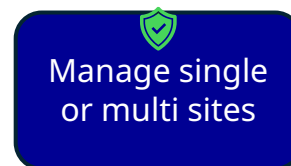
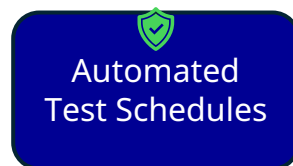
Time for a different way!

Remote water temperature and flow monitoring service, automating mandatory compliance activities for Legionella control.

Automatically monitor, record, and store all your flushing tasks and temperature checks in real-time.
See in when and where readings are taken and get notified before any non-compliance arises.

Devices are completely wireless (up to 10-year battery life) and can be quickly and easily installed with basic tools by any competent person, just place them wherever you need to take measurements. One easily pre-configured device, can be used quickly and efficiently to cover the whole range of monitoring requirements.

Simple system architecture means it can be used by any stakeholder(s) without specialist knowledge to deliver insight and continually remotely monitor your site(s) to ensure hassle-free compliance.



Step 1

Select your device configuration

Each robust, tamper free device has 3 separate configurable sensor inputs that can be used to monitor compliance with any combination of the following applications:

- **Hot Outlet (Standard)**
- **Hot Outlet (Healthcare)**
- **Cold Outlet**
- **Cold Unit**
- **TMV/Blended**
- **Hot Unit Outlet**
- **Hot Unit Return (Standard)**
- **Hot Unit Return (Healthcare)**



Offering monitoring solutions in traditional and healthcare settings for multiple services such as:

- | | |
|--------------------------|-----------------------------|
| • Bath | • Combi Water Heater |
| • Sink | • Intermediate Point |
| • Washbasin | • POU Water Heater |
| • Calorifier | • Return Leg |
| • Cold Water Tank | |

Step 2

Install your devices

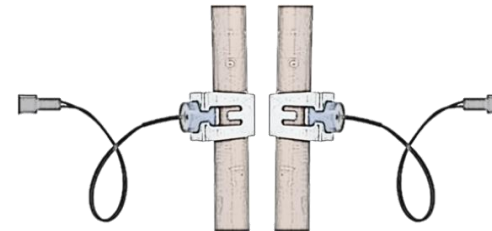
The device is supplied with a battery fitted, but in an inactive state. It is activated for use by connecting sensors at the point of device installation and will start collecting data and monitoring compliance, the moment it is activated.

The 10-year battery life (depending on upload schedules) offers a fit and forget solution to monitoring compliance.

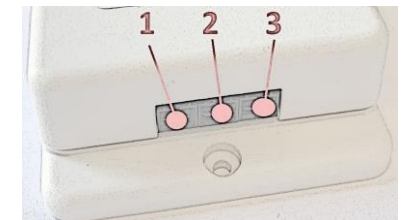
Devices connect to long range wide area network gateway (usually one per site) which can then be used to deploy other services using non-proprietary LoRaWAN technology.



Mount the main unit in an appropriate location



Simply clip the supplied sensors onto the pipes you wish to monitor



Plug the sensors into the main unit via simple connection method

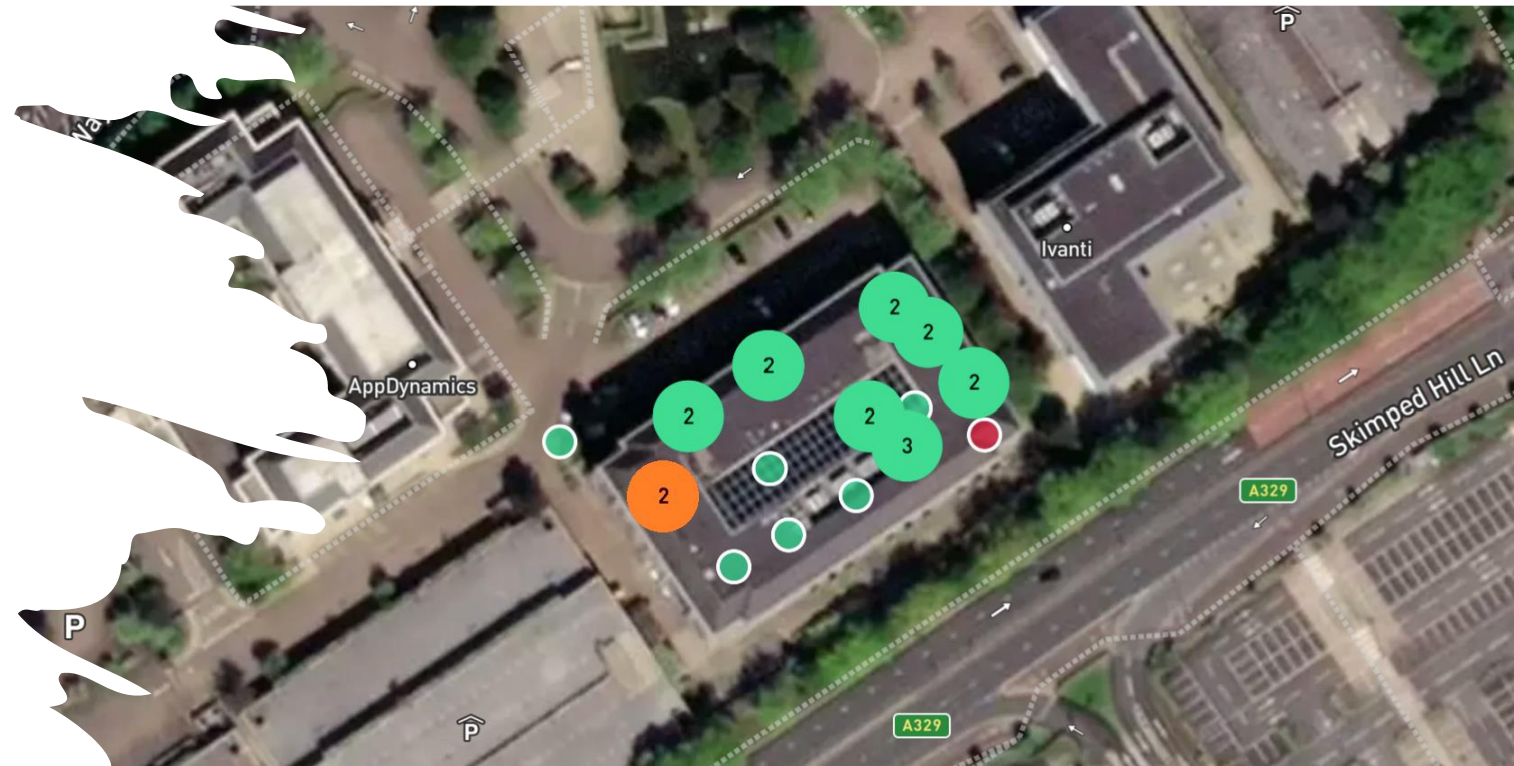
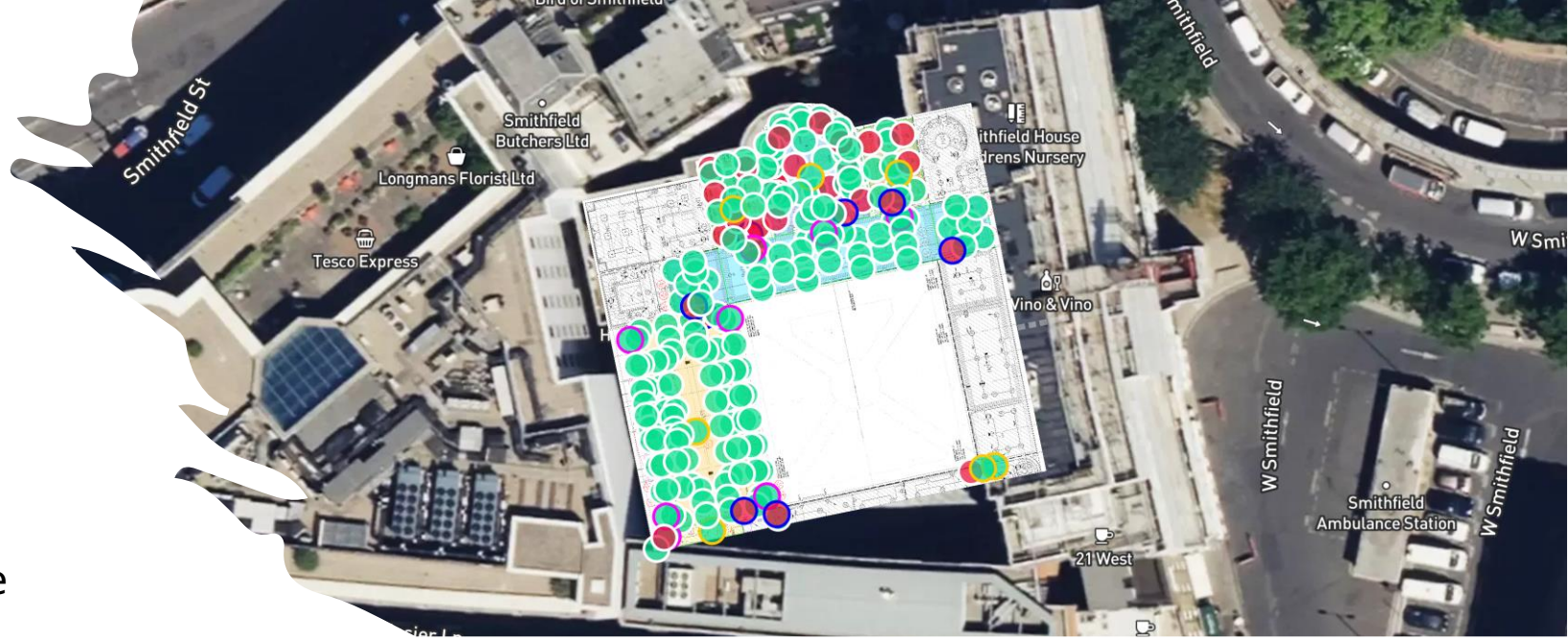
Step 3

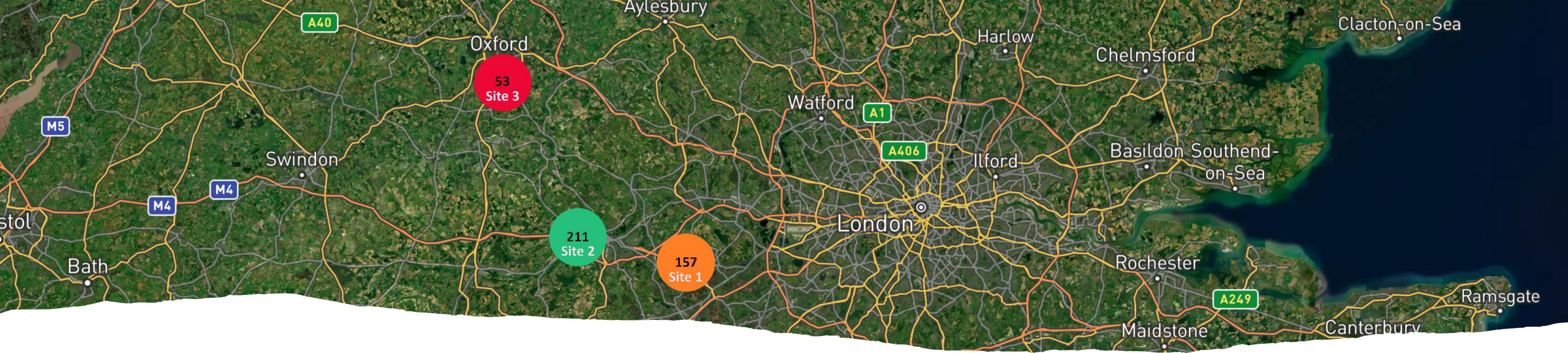
Configure your system

The devices are securely and easily connected to the system via QR code without any coding required.

Once tethered, simply locate Assets by geolocation, on a map, blueprints, floorplans or even in 3D renders.

Asset clusters can give an immediate view of compliance status in real-time, per area view.





Done!

You can now easily track and monitor compliance across as many devices as you wish.

Spread devices across rooms, floors, buildings or estates with total granularity; A single, multi site and multi client solution with user defined access to include any and all stakeholders across an organisation.

Live updates and notifications mean you only get the information you need, when you need it, while reports are easily generated (and can be automated) for any combination of devices or locations.

Legionella monitoring compliance sorted!

On or Offsite
Management

Zero
Paperwork

Automated
Test Schedules



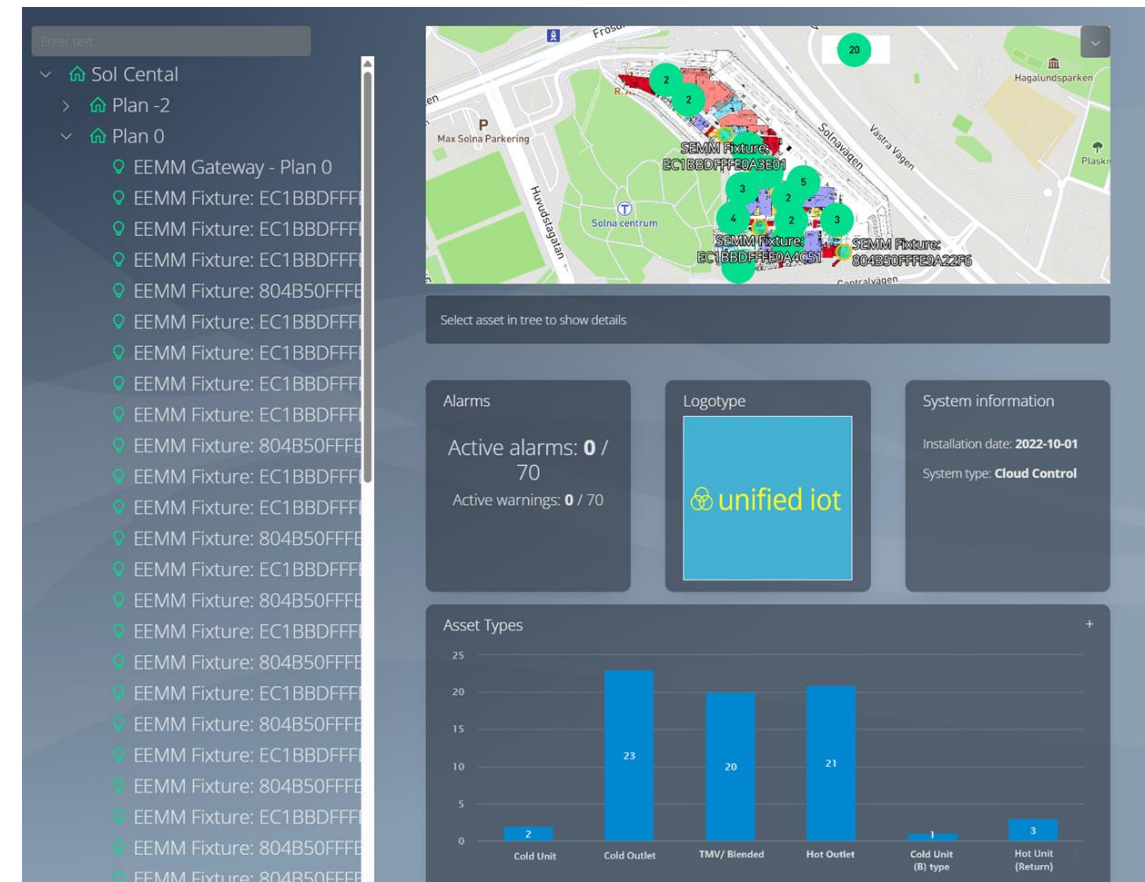
Manage single
or multi sites

Saves time and
money

Ensures
Compliance

Additional system features

- Devices are already configured to monitor compliance and alert on status through simple traffic light system in either a map/blueprint view (which automatically cluster), or in a hierarchy tree for easy visual identification of live status.
- Customisable service modules allow users to segregate legionella monitoring from any other services that can be deployed on the same network, with easy, no-code user defined dashboards for tailored live view.
- Add any additional information to individual Assets (Config type, pipe specifications, replacement part codes, fitting details, installation date, etc.).
- Devices are configured to report on compliance out of the box, but user defined warnings and alarms can easily be set for any parameter.
- Group and Tag the devices by location, function, importance etc.
- Create Automations and alerts for added security, safety and efficiency. Incorporating detailed user defined scenarios, so you don't have to constantly monitor status to ensure compliance.
- Add connected valves and taps to automate flow events for autonomous compliance and incorporate other sensors to ensure events are only triggered when safe or convenient!



Did you know we also have smart solutions for

With over 1.5m integrated devices on a no-code, end-to-end IoT platform, we can create connected solutions for almost any application.

Available from



IOT WAREHOUSE

www.iotwarehouse.com

customerservice@iotwarehouse.com

