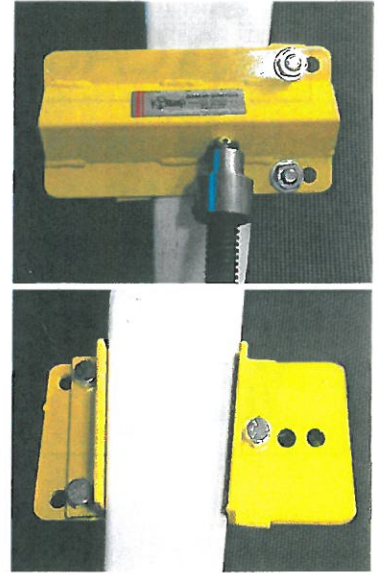


## Flat Adjustable Jack Pad Instructions

**The Jack Pad is designed to be used on aircraft which have flat, tapered, landing gear legs.**

1. Adjust the width of the jack pad to best fit your landing gear and the jack height.
2. Fit jack pad to gear and tap the "ball-point" with a light hammer to 'seat' the jack pad to the gear leg.
3. Use "C" clamp to clamp the jack pad to the gear leg. You may choose to use a felt pad or cloth between the gear leg and clamp to minimize risk of scratching paint.
4. Tighten the bolt holding the steel angle to the jack pad.
5. Set jack under the "ball-point" and jack wheel off the ground.
6. Reverse order for removal.



BAI-CI-009 KR 5/2/11



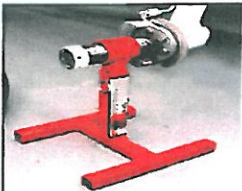
### WARNING

Use a c-clamp to keep the jack pad on the gear leg.



### CAUTION

Always use wheel chocks on the other wheels to keep the aircraft from shifting when a gear leg is jacked.



When removing a wheel, replace the wheel with Bogert Aviation's Landing Gear Safety Stand.



When breaking the bead of a tire, try Bogert Aviation's Tire Bead Breaker.



We would like to include you in our next YouTube video. Please take a picture or video of yourself using our product and we may add it to our next video.