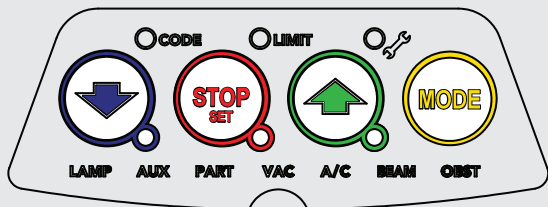


# GDO-12Hir<sub>o</sub>

## High Rolling Door Opener Quick Operation Guide

### 1.0 USER OPERATING CONTROLS



Button	Function
01	Close
02	Stop / Set Button
03	Open
04	Mode

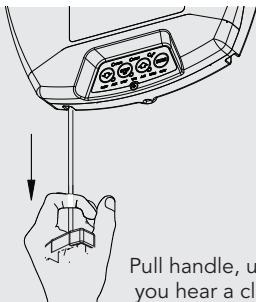
## 2.0 MANUAL DOOR OPERATION

### TO DISENGAGE THE OPENER

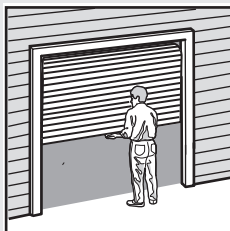


**tip**

It is recommended to disengage the door with the door in the closed position.



Pull handle, until you hear a click

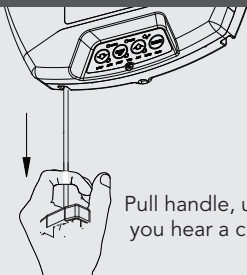


Manually operate door



**CAUTION:** When the opener is manually disengaged, the door is no longer locked. To lock the door manually, re-engage the opener after the door is closed.

### TO ENGAGE THE OPENER



Pull handle, until you hear a click



Press to test



**WARNING!** Please test the manual release mechanism to ensure that the manual release is easy to operate. No more than 20kg of force should be required to disengage the door using the manual release cord. IF excessive force is required, contact your dealer.

### 3.0 CODING A REMOTE CONTROL



The opener can only be operated from remote controllers that have been programmed into its memory. Up to 64 remotes can be programmed.

#### STEP ONE



remove controls cover

#### STEP TWO



Press repeatedly till CODE LED is lit

#### STEP THREE



OR



Press repeatedly

till all three LED's are lit

#### STEP FOUR



**HOLD**  
to enter coding



**HOLD for 3 sec**  
**RELEASE**  
**HOLD for 3 sec**  
Release both buttons

#### STEP FIVE



To exit coding

Then replace controls cover

#### STEP SIX



Press to test

### REMOTELY CODING A REMOTE CONTROL



Remotely coding works when you have a pre-coded remote control and are in range of the opener.

#### STEP ONE



Take a pre-coded remote and press the button to duplicate

#### STEP TWO



Use a pen, **HOLD for 2 sec** the middle button through the coding hole

#### STEP THREE

Opener flashes & beeps



**HOLD for 3 sec**  
**RELEASE**  
**HOLD for 3 sec**  
**RELEASE**

Take new remote

#### STEP FOUR

Opener stops flashing & beeping



Press to test

### 4.0 CHANGING A BATTERY



Battery Type: 1 x CR2032.

#### STEP ONE



Check Light Status Table

**HOLD**

Light Status

Battery

Solid

OK

Flashing

Replace

No light

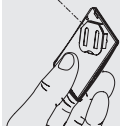
Replace

#### STEP TWO



Use screwdriver to remove screws and open

#### STEP THREE



Use non-metallic object to push out.



**WARNING!:** The battery is hazardous and must be kept out of reach of children. The battery can cause severe or fatal injuries within 2 hours or less if swallowed or placed inside any part of the body. If you suspect the battery has been swallowed or placed inside any part of the body, **SEEK IMMEDIATE** medical attention.

## 5.0 SMART PHONE CONTROL

(require Smart Hub)

The Smart Phone Control works via your home's WiFi network. Initial set up involves linking your phone app and smart opener to your home network.



**WARNING!:** This device allows for operation of the door when not in line-of-sight of the door and opener. The door may operate unexpectedly, therefore do not allow anything to stay in or near the path of the door.

### BEFORE YOU START



Download the ATA App to your smartphone



Ensure limits are set prior to connecting to wifi



The home WiFi router is within range of opener

### STEP ONE



Connect the Smart Hub to power & locate the registration card for the opener

Go to phone settings, then WiFi and select (ATA000000)

### STEP TWO



Open APP and click START

Set up new Smart Hub in app

### STEP THREE



Smart Hub connect appears, ensure WiFi network = (ATA000000)

Follow instructions in the app

Upon completion, test the opener through the ATA App.

## 6.0 TROUBLESHOOTING

Symptom	Possible cause	Remedy
The opener does not work from the remote	The opener does not have power.	Plug a device of similar voltage (e.g. a hairdryer) into the power point and check it is OK.
	The battery in the remote control is flat.	Replace the battery.
	The remote button is not programmed to operate the door.	Code in the remote control button.
	Door Code LED is flashing yet the opener is not working.	Ensure the correct button on the transmitter is being pressed.
One remote works but the other/s do not	Faulty remote control.	Replace remote control.
	Flat battery.	Replace battery.
The motor is running but the door remains stationary	The opener is disengaged.	Re-engage the opener.
The remote range varies or is restricted	Variations are normal depending on conditions e.g. temperature or external interference.	Make sure you can see the door when you use the remote control.
	The battery life is exhausted.	Check the battery status as per section 4 of this guide.
The door reverses for no apparent reason	If Safety beams are installed they may be partially obstructed.	Ensure the beam path is not obstructed. Check the alignment of the beams.
The Open LED and Close LED are flashing alternatively	Opener is overloaded.	Discontinue use and contact 1300 133 944 for support.
The Open LED continues to flash	Door obstructed when opening.	Clear away any obstructions and test door opens correctly. (If door is damaged, contact a door professional).
The Close LED continues to flash	Limits may be cleared.	Remove all power sources. Wait (10-15 secs), then reconnect power. If Blue LED is flashing, limits are not set. Contact 1300 133 944.

## 7.0 CARING FOR YOUR OPENER

Preventative servicing of your garage door and opener, is important. Your garage door is made up of numerous moving parts designed to lift and lower your door safely and efficiently.

Ongoing preventative servicing ensures that your door continues to function within factory specifications, greatly reduces the risk of failure and repair bills down the track and ensure you maintain your Warranty.

Refer to your Owners Opener Handbook for your service schedule available [HERE](#).



Refer to the installation manual for monthly testing procedures in Section 6.6 to ensure garage door is fit for use available [HERE](#).

Online warranty details are available [HERE](#).

## 8.0 NEED A SERVICE CALL?

If the opener needs a service please call the dealer who installed the garage door opener (their contact details are usually on a sticker on the back of your garage door).

For product assistance, general enquiry or more information, please visit:

ata-aust.com.au  
or call 1300 133 944.