

VOLLEYBALL



DIGITAL



NIKE DIGITAL ELITE LS JERSEY
DJ8535 Page 5



NIKE DIGITAL ELITE SS JERSEY
DJ8615 Page 6



NIKE DIGITAL CLUB ACE LS JERSEY
CZ1384 Page 7



NIKE DIGITAL CLUB ACE SS JERSEY
CZ1401 Page 8



NIKE DIGITAL CLUB ACE SL JERSEY
CZ1367 Page 9



NIKE DIGITAL CLUB ACE ARM SLEEVE
CZ1433 Page 10



NIKE DIGITAL HYPERELITE LS JERSEY
BV1012 Page 11



NIKE DIGITAL HYPERELITE SL JERSEY
BV1011 Page 12



NIKE DIGITAL HYPERELITE ARM SLEEVE
BV1015 Page 13

CUSTOM



NIKE CUSTOM HYPERELITE CAPRI
BV1018 Page 14



NIKE CUSTOM HYPERELITE SHORT
BV1019 Page 15



NIKE CUSTOM PERFORMANCE GAME SHORT
FD0203 Page 15



NIKE STOCK ELITE LS JERSEY
DJ8626 Page 16



NIKE STOCK ELITE SS JERSEY
DJ8627 Page 17



NIKE STOCK CLUB ACE LS JERSEY
CZ1429 Page 18



NIKE STOCK CLUB ACE SS JERSEY
CZ1432 Page 19



NIKE STOCK CLUB ACE CAPRI
CZ1448 Page 20



NIKE STOCK HYPERELITE SHORT
BV1020 Page 21



NIKE 5" PERFORMANCE GAME SHORT
DV6740 Page 21



NIKE PERFORMANCE GAME SHORT
108720 Page 22




MOVE TO ZERO



Helping Protect The Future Of Sport For All Athletes*

Move to Zero is Nike's journey toward zero carbon and zero waste to help protect the future of sport. We exist to serve athletes everywhere and that's why we're on a mission to help ensure a healthy planet. For us, there is no finish line.

NikeTeam.com will now display a sunburst logo next to products made with sustainable materials.

Look for this logo  Sustainable Materials to find products made with at least 50% sustainable materials by weight, exclusive of trims. Sustainable materials include recycled polyester or organic cotton.

Recycled polyester reduces carbon emissions and waste.

Organic cotton is grown without synthetic fertilizers and with less water than conventional cotton.



For more information on Nike Sustainability please visit nike.com/sustainability or purpose.nike.com.

**NIKE DIGITAL ELITE LS JERSEY
DJ8535 \$110.00**

SIZES: XS, S, M, L, XL, 2XL *15% upcharge for ST, MT, LT, XLT, 2XLT

FABRIC: Body: 89% polyester/11% spandex. Insets: 80% polyester/20% spandex.

OFFER DATE: 04/01/22

END DATE: 04/01/27

The Nike Elite Jersey is built to compete. Stretchy, comfortable fabric employs sweat-wicking technology to keep you dry and comfortable so you can focus on giving your best. Customize the look with colors, graphics and wordmarks that set your team apart.

Body width: 18.5", **Body length:** 25.5" (size medium). **Tall body length:** +1.25" (all sizes),

Tall sleeve length: +1.5" (all sizes).

**CUSTOMIZE IT**

For complete embellishment and pricing options please visit [NIKETEAM.COM](https://www.niketeam.com)



**NIKE DIGITAL ELITE SS JERSEY
DJ8615 \$100.00**

SIZES: XS, S, M, L, XL, 2XL *15% upcharge for ST, MT, LT, XLT, 2XLT

FABRIC: Body: 89% polyester/11% spandex. Insets: 80% polyester/20% spandex.

OFFER DATE: 04/01/22

END DATE: 04/01/27

The Nike Elite Jersey is built to compete. Stretchy, comfortable fabric employs sweat-wicking technology to keep you dry and comfortable so you can focus on giving your best. Customize the look with colors, graphics and wordmarks that set your team apart.

Body width: 18.5", Body length: 25.5" Tall body length: +1.25" (all sizes),

Tall sleeve length: +1" (all sizes).

**CUSTOMIZE IT**

For complete embellishment and pricing options please visit [NIKETEAM.COM](https://www.niketeam.com)



NIKE DIGITAL CLUB ACE LS JERSEY CZ1384 \$85.00

SIZES: XS, S, M, L, XL, 2XL *15% upcharge for ST, MT, LT, XLT, 2XLT

FABRIC: Main Body: 85% recycled polyester/15% elastane.

Side Panels: 80% recycled polyester/20% elastane.

OFFER DATE: 04/01/21

END DATE: 04/01/26

Matching long-sleeve coverage with a lightweight, streamlined design, the Nike Digital Club Ace Volleyball Jersey is built for intense play during practice or game day. Its sweat-wicking fabric features mesh panels that help vent out excess heat and moisture.

Body length: 26.25" (size medium). **Tall body length:** +1.25" (all sizes),

Tall sleeve length: +1.5" (all sizes).

KIDS / CZ1462 / XS-XL / \$75.00



CUSTOMIZE IT

For complete embellishment and pricing options please visit [NIKETEAM.COM](https://www.niketeam.com)



Sustainable Materials



NIKE DIGITAL CLUB ACE SS JERSEY CZ1401 \$75.00

SIZES: XS, S, M, L, XL, 2XL *15% upcharge for ST, MT, LT, XLT, 2XLT

FABRIC: Main Body: 85% recycled polyester/15% elastane.

Side Panels: 80% recycled polyester/20% elastane.

OFFER DATE: 04/01/21

END DATE: 04/01/26

Lightweight and streamlined, the Nike Digital Club Ace Volleyball Jersey is built for intense play during practice or game day. Its sweat-wicking fabric features mesh panels that help vent out excess heat and moisture.

Body length: 26.25" (size medium). **Tall body length:** +1.25" (all sizes),

Tall sleeve length: +1.5" (all sizes).

KIDS / CZ1465 / XS-XL / \$65.00



CUSTOMIZE IT

For complete embellishment and pricing options please visit [NIKETEAM.COM](https://www.niketeam.com)



Sustainable Materials



NIKE DIGITAL CLUB ACE SLEEVELESS JERSEY CZ1367 \$75.00

SIZES: XS, S, M, L, XL, 2XL *15% upcharge for ST, MT, LT, XLT, 2XLT

FABRIC: Main Body: 85% recycled polyester/15% elastane.

Side Panels: 80% recycled polyester/20% elastane.

OFFER DATE: 04/01/21

END DATE: 04/01/26

Lightweight and streamlined, the Nike Digital Club Ace Volleyball Jersey is built for intense play during practice or game day. Its sleeveless design, with sweat-wicking fabric and mesh panels, helps vent out excess heat and moisture. Minimal seaming helps reduce irritation, to let you focus on the game.

Body length: 26.25" (size medium). **Tall body length:** +1.25" (all sizes).



Sustainable Materials



CUSTOMIZE IT

For complete embellishment and pricing options please visit [NIKETEAM.COM](https://www.niketeam.com)

**NIKE DIGITAL CLUB ACE ARM SLEEVE
CZ1433 \$27.00**

SIZES: XS, S, M, L, XL, 2XL, ST, MT, LT, XLT, 2XLT
FABRIC: 85% recycled polyester/15% elastane.
OFFER DATE: 04/01/21
END DATE: 04/01/26

Go from short-sleeve to long-sleeve coverage with the easy on-and-off Nike Club Ace Arm Sleeves. They're built with stretchy, sweat-wicking fabric and silicone grippers for a distraction-free fit that lets you focus on the game.



CUSTOMIZE IT
For complete embellishment and pricing options please visit [NIKETEAM.COM](https://www.niketeam.com)



WMNS NIKE DIGITAL HYPERELITE LS JERSEY BV1012 \$112.00

SIZES: XS, S, M, L, XL, 2XL *15% upcharge for ST, MT, LT, XLT, 2XLT

FABRIC: 89% polyester/11% spandex.

OFFER DATE: 04/01/20

END DATE: 04/01/28

The Nike HyperElite Volleyball Jersey features engineered 4-way stretch fabric for maximum mobility. Perforated knit fabric delivers increased airflow and moisture-wicking properties. The improved neckline adds comfort and on-trend style, while the contoured sleeve hem provides a tailored fit. The high performance, perforated knit helps you stay cool in the high-heat areas during allout play. A meticulously designed gradient fade on the lower sleeves blends your team colors with pin-point accuracy. Add your logo and customize to your team specific colors. Elevate your team spirit by including a team motto on the inner back hem.

Body width: 18.25", Body length: 25.5" (size medium). Tall body length: +1.25" (all sizes), Tall sleeve length: +1.5" (all sizes).

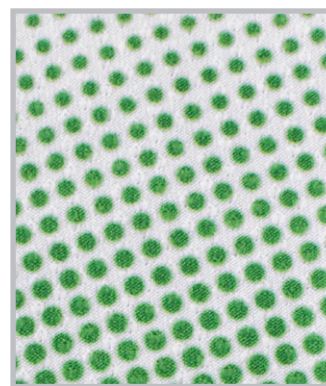


CUSTOMIZE IT

For complete embellishment and pricing options please visit NIKETEAM.COM



 Sustainable Materials



DOT PATTERN DETAIL



FABRIC DETAIL

**WMNS NIKE DIGITAL HYPERELITE
SLEEVELESS JERSEY
BV1011 \$102.00**

SIZES: XS, S, M, L, XL, 2XL *15% upcharge for ST, MT, LT, XLT, 2XLT

FABRIC: 89% polyester/11% spandex.

OFFER DATE: 04/01/20

END DATE: 04/01/28

Built for the female athlete, the Nike HyperElite Volleyball Jersey disrupts the traditions of on-court style by removing the sleeves, adding the ultimate in flexibility, range of motion and fearless attitude. The engineered construction combines super high-stretch and perforated knit fabric to keep you cool in the high-heat areas. The sleeveless design pairs perfectly with the matching Nike HyperElite Arm Sleeves. Featuring your team colors to complete the look and add the necessary coverage for hard play on the court. Fold-over elastic armholes. Digital team slogan inside lower back hem.

Body width: 17.25", Body length: 25.5" (size medium). Tall body length: +1.25" (all sizes).



CUSTOMIZE IT

For complete embellishment and pricing options please visit [NIKETEAM.COM](https://www.niketeam.com)



Sustainable Materials



**WMNS NIKE DIGITAL HYPERELITE
ARM SLEEVE
BV1015 \$32.00**

SIZES: XS, S, M, L, XL, 2XL *15% upcharge for ST, MT, LT, XLT, 2XLT
FABRIC: 89% polyester/11% spandex.
OFFER DATE: 04/01/20
END DATE: 04/01/28

The HyperElite Arm Sleeves are made to match your team's HyperElite Sleeveless Volleyball Jersey. This new sleeve features multi-textured fabric to promote ball control and adds coverage to high-impact areas. The super soft and breathable high-stretch fabric adds distraction-free coverage. A thin layer of grippy silicone along the inner edges help keep the sleeves comfortably in place. Choose from either a digital gradient fade pattern that blends your team colors or one solid team color featuring your logo.



CUSTOMIZE IT
For complete embellishment and pricing options please visit [NIKETEAM.COM](https://www.niketeam.com)



BACK VIEW

WMNS NIKE CUSTOM HYPERELITE CAPRI BV1018 \$62.00

SIZES: XS, S, M, L, XL, 2XL

FABRIC: Body: 80% polyester, 20% spandex. Panels: 84% recycled polyester, 16% spandex.
Gusset lining: 80% polyester, 20% spandex.

OFFER DATE: 04/01/20

END DATE: 04/01/28

The Nike HyperElite Volleyball Capris take a traditional Volleyball silhouette and extend it down past the knee for added coverage. The capris feature contoured stitching to move with your body, and the stretchy, tight fit allows your knee pads to easily slip on over the fabric. The new capri design lets you keep your confidence while you bend, jump and dive to keep the volley alive. Paneled construction and body-following seams create a free, non-restrictive fit. Not only is the fabric lightweight, but it also features Nike's proven Dri-FIT technology, which helps you stay dry, comfortable and focused during competition. The elastic waistband and hidden adjustable drawcord will help you stay locked in and keep your uniform in place during all-out play.

Hip width: 15.5" (size medium), Inseam length: 21.5" (all sizes).



CUSTOMIZE IT

For complete embellishment and pricing options please visit [NIKETEAM.COM](https://www.niketeam.com)



BACK VIEW

WMNS NIKE CUSTOM HYPERELITE SHORT BV1019 \$47.00

SIZES: XS, S, M, L, XL, 2XL

FABRIC: Body: 80% polyester/20% spandex. Insets: 84% recycled polyester/16% spandex.
Gusset lining: 80% polyester/20% spandex.

OFFER DATE: 04/01/20

END DATE: 04/01/28

The Nike HyperElite Volleyball Shorts feature a zoned panel design with flatseam stitching strategically placed to provide comfort, support and optimal range of motion during all-out play. The side panels are customizable to match your team's colors. Nike Dri-FIT technology moves sweat from your skin for quicker evaporation — helping you stay dry, comfortable and focused. The contoured stitching follows your body's natural symmetry, mitigating restrictions and letting you move freely when you stretch to make a play. An elastic waistband secures the fit to help keep you covered and your jersey in place. Custom team color-blocking options available on panels.

Hip width: 17" (size medium), Inseam length: 3.25" (all sizes).



CUSTOMIZE IT

For complete embellishment and pricing options please visit [NIKETEAM.COM](https://www.niketeam.com)

NEW NIKE CUSTOM 5" PERFORMANCE GAME SHORT FDO203 \$40.00

SIZES: XS, S, M, L, XL, 2XL

FABRIC: 100% polyester.

OFFER DATE: 04/01/23

END DATE: 04/01/28

The Custom 5" Performance Game Short provides our athletes with more modesty by offering a longer length. A hybrid of the 5" Ace Short (in length) and Performance Game Short (in material) we will utilize some time honored favorites.

Hip width: 17.5", Inseam length: 5" (size medium).



CUSTOMIZE IT

For complete embellishment and pricing options please visit [NIKETEAM.COM](https://www.niketeam.com)

NIKE STOCK ELITE LS JERSEY DJ8626 \$62.00

SIZES: XXS, XS, S, M, L, XL, 2XL

FABRIC: Body: 89% polyester/11% spandex. Insets: 80% polyester/20% spandex.

OFFER DATE: 04/01/22

END DATE: 04/01/27

Made with at least 75% recycled polyester fibers, the Nike Elite Jersey is built to compete. Stretchy, comfortable fabric employs sweat-wicking technology to keep you dry and comfortable so you can focus on giving your best. Customize the look with colors that show your team's spirit.

Body width: 18.5", Body length: 25.5" (size medium).

Part of Stock Embellishment Program.

- | | |
|---------------------------------------|--|
| 012 Black/White/(White) | 061 Team Anthracite/White/(White) |
| 100 White/White/(Black) | 342 Team Dark Green/White/(White) |
| 420 Team Navy/White/(White) | 494 Team Royal/White/(White) |
| 546 Team Purple/White/(White) | 612 Team Cardinal/White/(White) |
| 658 Team Scarlet/White/(White) | |

KIDS / DJ8658 / XS-XL / \$57.00



NIKE STOCK ELITE SS JERSEY DJ8627 \$52.00

SIZES: XXS, XS, S, M, L, XL, 2XL

FABRIC: Body: 89% polyester/11% spandex. Insets: 80% polyester/20% spandex.

OFFER DATE: 04/01/22

END DATE: 04/01/27

Made with at least 75% recycled polyester fibers, the Nike Elite Jersey is built to compete. Stretchy, comfortable fabric employs sweat-wicking technology to keep you dry and comfortable so you can focus on giving your best. Customize the look with colors that show your team's spirit.

Body width: 18.5", Body length: 25.5" (size medium).

Part of Stock Embellishment Program.

012 Black/White/(White)

100 White/White/(Black)

420 Team Navy/White/(White)

546 Team Purple/White/(White)

658 Team Scarlet/White/(White)

061 Team Anthracite/White/(White)

342 Team Dark Green/White/(White)

494 Team Royal/White/(White)

612 Team Cardinal/White/(White)

KIDS / DJ8665 / XS-XL / \$47.00



NIKE STOCK CLUB ACE LS JERSEY CZ1429 \$47.00

SIZES: XS, S, M, L, XL, 2XL

FABRIC: Main Body: 84% recycled polyester/16% elastane.

Side Panels: 80% recycled polyester/20% elastane.

OFFER DATE: 04/01/21

END DATE: 04/01/26

Lightweight and streamlined, the Nike Stock Club Ace Jersey is built to match your intensity at practice or during game day. Its sweat-wicking fabric features mesh panels that help keep you cool.

Body length: 26.25" (size medium).

Part of Stock Embellishment Program.

012 Black/White/(White)

100 White/Black/(Black)

420 Navy/White/(White)

546 Purple/White/(White)

652 Pink Fire II/White/(White)

670 Dark Maroon/White/(White)

061 Anthracite/White/(White)

342 Dark Green/White/(White)

494 Royal/White/(White)

612 Cardinal/White/(White)

658 Scarlet/White/(White)

KIDS / CZ1469 / XS-XL / \$42.00



Sustainable Materials



NIKE STOCK CLUB ACE SS JERSEY CZ1432 \$37.00

SIZES: XS, S, M, L, XL, 2XL

FABRIC: Main Body: 84% recycled polyester/16% elastane.

Side Panels: 80% recycled polyester/20% elastane.

OFFER DATE: 04/01/21

END DATE: 04/01/26

Lightweight and streamlined, the Nike Stock Club Ace Volleyball Jersey is built for intense play during practice or game day. Its sweat-wicking fabric features mesh panels that help vent out excess heat and moisture.

Body length: 26.25" (size medium).

Part of Stock Embellishment Program.

012 Black/White/(White)

100 White/Black/(Black)

420 Navy/White/(White)

546 Purple/White/(White)

652 Pink Fire II/White/(White)

670 Dark Maroon/White/(White)

061 Anthracite/White/(White)

342 Dark Green/White/(White)

494 Royal/White/(White)

612 Cardinal/White/(White)

658 Scarlet/White/(White)

KIDS / CZ1472 / XS-XL / \$32.00



Sustainable Materials



NIKE STOCK CLUB ACE CAPRI
CZ1448 \$47.00

SIZES: XS, S, M, L, XL
FABRIC: 80% polyester/20% spandex.
OFFER DATE: 04/01/21
END DATE: 04/01/26

The Nike Stock Club Ace Volleyball Capris are made with stretchy sweat-wicking technology for lasting comfort and locked-in support on the court. Flat seams help reduce distractions, so you can focus on the game.
Inseam length: 21.75" (size medium).

-
- 012** Black/(White)
 - 061** Anthracite/(White)
 - 420** Navy/(White)

KIDS / CZ1648 / XS-XL / \$42.00



**NIKE STOCK HYPERELITE SHORT
BV1020 \$40.00**

SIZES: XS, S, M, L, XL, 2XL
FABRIC: Body: 80% polyester/20% spandex. Insets: 84% recycled polyester/16% spandex.
 Gusset lining: 80% polyester/20% spandex
OFFER DATE: 04/01/20
END DATE: 04/01/28

The Nike HyperElite Volleyball Shorts feature a zoned panel design with flatseam stitching strategically placed to provide comfort, support and optimal range of motion during all-out play. Nike Dri-FIT technology moves sweat from your skin for quicker evaporation — helping you stay dry, comfortable and focused. The contoured stitching follows your body's natural symmetry, mitigating restrictions and letting you move freely when you stretch to make a play. An elastic waistband secures the fit to help keep you covered and your jersey in place. Swoosh design trademark on left thigh.

Hip width: 17" (size medium), Inseam length: 3.25" (all sizes).

- | | | |
|----------------------------|--------------------------------|-------------------------------|
| 010 Black/(White) | 060 Anthracite/(White) | 341 Dark Green/(White) |
| 419 Navy/(White) | 493 Royal/(White) | 545 Purple/(White) |
| 657 Scarlet/(White) | 669 Dark Maroon/(White) | |

KIDS / CZ1640 / XS-XL / \$37.00



**NIKE 5" PERFORMANCE GAME SHORT
DV6740 \$35.00**

SIZES: XS, S, M, L, XL, 2XL
FABRIC: 100% polyester.
OFFER DATE: 04/01/23
END DATE: 04/01/28

The 5" Performance Game Short provides our athletes with more modesty by offering a longer length. A hybrid of the 5" Ace Short (in length) and Performance Game Short (in material) we will utilize some time honored favorites.

Hip width: 17.5", Inseam length: 5" (size medium).

- | | | |
|---------------------------------|-------------------------------------|------------------------------------|
| 010 Black/(White) | 060 Team Anthracite/(White) | 341 Team Dark Green/(White) |
| 419 Team Navy/(White) | 493 Team Royal/(White) | 545 Team Purple/(White) |
| 657 Team Scarlet/(White) | 669 Team Dark Maroon/(White) | |



**NIKE PERFORMANCE GAME SHORT
108720 \$32.00**

SIZES: 2XS, XS, S, M, L, XL, 2XL
FABRIC: 82% polyester/18% spandex.
OFFER DATE: 06/01/06
END DATE: 04/01/28

Performance Dri-FIT fabric short with elastic waist. Lined crotch gusset and embroidered Swoosh design trademark at lower left leg.

Hip width: 16.75", Inseam length: 2" (size medium).

- | | | |
|--------------------------------|-------------------------------|-------------------------------|
| 010 Black/(White) | 060 Anthracite/(White) | 341 Dark Green/(White) |
| 419 Navy/(White) | 493 Royal/(White) | 545 Purple/(White) |
| 610 Dark Maroon/(White) | 657 Scarlet/(White) | |

KIDS / 836323 / XS-XL / \$27.00





CUSTOMIZE IT

COMPLETE EMBELLISHMENT AND PRICING OPTIONS CAN BE FOUND AT NIKETEAM.COM

COLOR OPTIONS: COLOR AVAILABILITY WILL VARY BY STYLE.



LETTERING OPTIONS: HEIGHT WILL VARY BASED ON TEAM NAME.

VAPOR STRIKE - 1 or 2 color

ABCDEFGHIJKLMNOPQRSTUVWXYZ

VAPOR STRIKE ITALIC - 1 or 2 color

ABCDEFGHIJKLMNOPQRSTUVWXYZ

ORANGE - 1 or 2 color

ABCDEFGHIJKLMNOPQRSTUVWXYZ

ALL LEAGUE - 1 or 2 color - (Also available in Condensed version)

ABCDEFGHIJKLMNOPQRSTUVWXYZ

NIKE UNCONTESTED - 1 color

ABCDEFGHIJKLMNOPQRSTUVWXYZ

FULL BLOCK - 1 or 2 color - (Also available in Condensed version)

ABCDEFGHIJKLMNOPQRSTUVWXYZ

BUREAU - 1 or 2 color

ABCDEFGHIJKLMNOPQRSTUVWXYZ

BOULDER - 1 or 2 color

ABCDEFGHIJKLMNOPQRSTUVWXYZ

MICHIGAN STATE - 1 or 2 color

ABCDEFGHIJKLMNOPQRSTUVWXYZ

TUSCON - 1 or 2 color - (Also available in Condensed version)

ABCDEFGHIJKLMNOPQRSTUVWXYZ

SCRIPT - 1 or 2 color

ABCDEFGHIJKLMNOPQRSTUVWXYZ

SCRIPT LOWER CASE - 1 or 2 color

abcdefghijklmnopqrstuvwxyz

NUMBERING OPTIONS: HEIGHT WILL VARY BY STYLE.

VAPOR STRIKE - 1 or 2 color

1234567890

VAPOR STRIKE ITALIC - 1 or 2 color

1234567890

FULL BLOCK - 1 or 2 color - (Also available in Condensed version)

1234567890

ALL LEAGUE - 1 or 2 color - (Also available in Bold and Condensed version)

1234567890

ALL LEAGUE SHADOW - 2 color

1234567890

ALL LEAGUE - 3 color

1234567890

NIKE UNCONTESTED - 1 or 2 color

1234567890

BUREAU - 1 or 2 color

1234567890

ORANGE - 1 or 2 color

1234567890

BOULDER - 3 color only

1234567890

MICHIGAN STATE - 1 or 2 color

1234567890

TUSCON - 1 or 2 color - (Also available in Condensed version)

1234567890

POST EMBELLISHMENT IS NOT RECOMMENDED WITH DIGITALLY PRINTED STYLES.

NIKE TEAM SPORTS – COLOR MATCHING CHART:

Many Nike Team colors have more than one name for the same color. This chart shows colors of the *same value with different names.*

TEAM WHITE	TEAM BLUE GREY	WOLF GREY	COOL GREY	DK STEEL GREY	FLINT GREY	DK GREY HEATHER	NATURAL BASEBALL/SOFTBALL ONLY	BIRCH
TEAM BLACK								
TEAM VEGAS GOLD TEAM GOLD	JERSEY GOLD	CHINO	TEAM BROWN	DK CINDER	ANTHRACITE	TEAM ANTHRACITE	OBSIDIAN	TEAM NAVY COLLEGE NAVY
MEDIUM OLIVE	VOLT	ACTION GREEN	LT GREEN SPARK	PINE GREEN	CLASSIC GREEN TEAM KELLY GREEN APPLE GREEN	TEAM DK GREEN GORGE GREEN	NOBLE GREEN	HYPER TURQUOISE
TEAM LT BLUE	VALOR BLUE	PHOTO BLUE	TEAM ROYAL BLUE	GAME ROYAL	TIDAL BLUE	AERO BLUE	BLUSTERY	MARINA
TEAM PURPLE	NEW ORCHID	PINKFIRE	VIVID PINK	BRIGHT CRIMSON	TEAM SCARLET UNIVERSITY RED	TEAM CRIMSON	GYM RED	TEAM RED
TEAM CARDINAL TEAM MAROON	TEAM DK MAROON DEEP MAROON	YELLOW STRIKE	TOUR YELLOW	DESERT ORANGE	TEAM BRIGHT GOLD SUNDOWN UNIVERSITY GOLD	BRIGHT CERAMIC	TEAM ORANGE	

NIKETEAM.COM

