



**ELECA**

Parts & Components

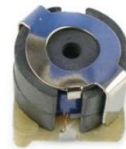
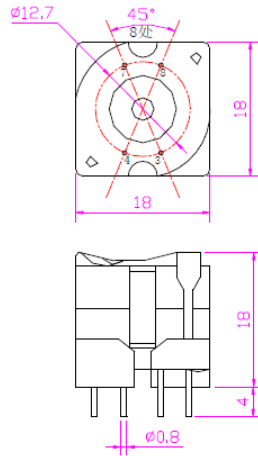
[WWW.ELECA.COM](http://WWW.ELECA.COM)

# Components



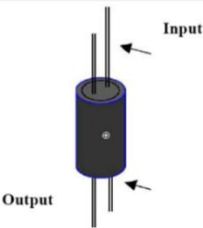
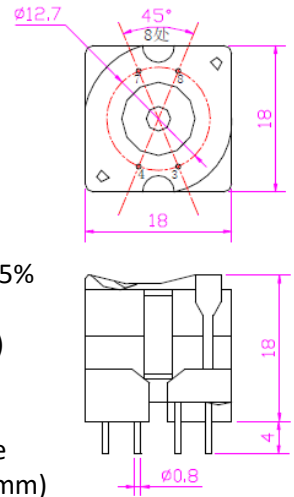
## 600mH inductor ELECA Halo Wah Inductor

Inductance: 600mH  $\pm$  5%  
@1kHz, 0.3Vrms  
Q Value: 95  $\pm$  15 (25°C)  
Dielectric Strength:  
200Vrms/ 1mA, 1s  
8-pin PCB mounting style  
Dimensions: 18x18x22 (mm)



## 500mH inductor ELECA Halo Wah Inductor

Inductance: 500mH  $\pm$  5%  
@1kHz, 0.3Vrms  
Q Value: 95  $\pm$  15 (25°C)  
Dielectric Strength:  
200Vrms/ 1mA, 1s  
8-pin PCB mounting style  
Dimensions: 18x18x22 (mm)



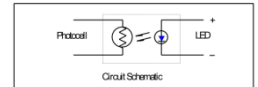
	Dimensions
Cylindric Diameter	6.0mm
Cylindric Length	13.5mm
Output Lead Length	27.5mm
Input Lead Length	25.0mm
Lead Diameter	0.45mm
Lead Gap	2.8mm
Input Polarity Sign *	LED anode-lead
Ektexine Material	PVC

## Optical Coupler ELC-001

**Characteristics**  
Pure resistor and non-polarity output .  
Wide range of analog linear resistance, the low "on" resistance, high "off" resistance.  
Simple circuit configuration suitable for DC and AC use.  
Input to output isolation, and low distortion coupling.  
Encapsulation with PPO high-temperature resistant material.

### Specifications

Recommended Model	LCR-0203 Series
Encapsulation	Aluminum Alloy Columnar Type
Input Current	0-20mA .Max 40mA
Input Voltage	1.6-2.5Vdc
Output Light Resistance	50Ω-1KΩ@20mA-0.01mA
Output Dark Resistance	1-10MΩ@10 seconds off later
Response Time	<2.5mS
Insulating Voltage	>2500VRMS
Working Frequency	<300KHz
Out-cell resist Voltage	<50V
Dynamic Range	<100dB
DC Coupling Capacitance	< 5pF
Max. Power Consumption	100mW
Operating Temp.	-30→+70°C
Storage Temp.	-40→+80°C



## Optical Coupler ELC-02XJ

### Description

This optical coupler consists of an LED input optically coupled to a photocell. This photoelectric component control the changes of output resistance by inputting the different current. The photocell resistance is high when the LED is "off" and the resistance is low when it's "on".

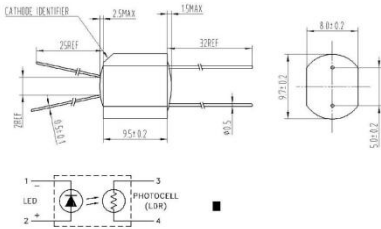
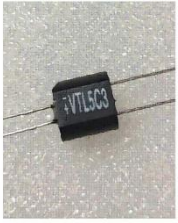
### Features

Compact package  
Low "on" resistance  
Low LED current  
Fast raise and decay time  
Passive resistance output

### Electrical Characteristics (TA=25° C)

Symbol	Parameter	Min.	Typ.	Max.	Units	Test Conditions
I <sub>F</sub>	Forward Current			25	mA	
V <sub>F</sub>	Forward Voltage	1.7	1.9	2.1	V	I <sub>F</sub> =20mA
R <sub>ON1</sub>	On Resistance	140	200	250	Ω	I <sub>F</sub> =20mA
R <sub>ON2</sub>	On Resistance	1000	1250	1500	Ω	I <sub>F</sub> =1mA
R <sub>OFF</sub>	Off Resistance	1			M	

# Components



## Optical Coupler VTL5C3

PLASTIC POTTING CONTOUR NOT CONTROLLED

ABSOLUTE MAXIMUM RATINGS @ 25° C

Maximum Temperatures

Storage and Operating: -35° C to 75° C

Cell Power: 175 mW

Derate above 30° C: 3.9 mW/° C

LED Current: 40 mA

Derate above 30° C: 0.9 mA/° C

LED Forward Voltage Drop @ 20 mA:  
2.0V (1.65V Typ.)

Min. Isolation Voltage @ 70% Rel. Humidity:  
2500 VRMS

Output Cell Capacitance: 5.0 pF

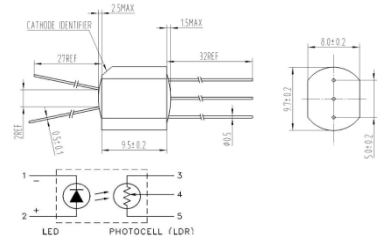
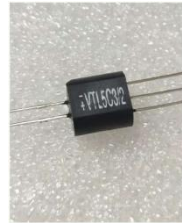
Cell Voltage: 250V

LED Reverse Breakdown Voltage: 3.0 V

Input - Output Coupling Capacitance: 0.5 pF

ELECTRO-OP TICAL CHARCTERIS TICS @  
25° C

Part Number	ON Resistance		OFF Resistance @ 10 sec. (Min.)	Response Time	
	Input current	Dark Adapted (Typ.)		Turn-on to 63% Final R <sub>ON</sub> (Typ.)	Turn-off (Decay) to 100 k <sub>v</sub> (Max.)
VTL5C3	1 mA 10 mA 40 mA	30 k $\Omega$ 5 k $\Omega$ 1.5 k $\Omega$	10 M $\Omega$	2.5 ms	35 ms



## Optical Coupler VTL5C3 /2

PLASTIC POTTING CONTOUR NOT CONTROLLED

ABSOLUTE MAXIMUM RATINGS @ 25° C

Maximum Temperatures

Storage and Operating: -35° C to 75° C

Cell Power: 175 mW

Derate above 30° C: 3.9 mW/° C

LED Current: 40 mA

Derate above 30° C: 0.9 mA/° C

LED Forward Voltage Drop @ 20 mA:  
2.0V (1.65V Typ.)

Min. Isolation Voltage @ 70% Rel. Humidity:  
2500 VRMS

Output Cell Capacitance: 5.0 pF

Cell Voltage: 100V

LED Reverse Breakdown Voltage: 3.0 V

Input - Output Coupling Capacitance: 0.5 pF

ELECTRO-OP TICAL CHARCTERIS TICS @  
25° C

Part Number	ON Resistance		OFF Resistance @ 10 sec. (Min.)	Response Time	
	Input current	Dark Adapted (Typ.)		Turn-on to 63% Final R <sub>ON</sub> (Typ.)	Turn-off (Decay) to 100 k $\Omega$ (Max.)
VTL5C3/2	1 mA 40 mA	55 k $\Omega$ 2 k $\Omega$	10 M $\Omega$	3.0 ms	50 ms

# Die-cast housing



**EW2510** Die-cast Aluminum alloy

**EW2510Z** Die-cast Zinc alloy

Size: 250 x 102 x 42mm



**EW2710** Die-cast Aluminum alloy

**EW2710Z** Die-cast Zinc alloy

Size: 270 x 102 x 42mm

## Die-cast Aluminum alloy

**EC1265**

Size: 120 x 65 x 40mm



**EC1290**

Size: 120 x 90 x 37mm



**EC1295**

Size: 120 x 95 x 37mm



**EC1295T**

Size: 120 x 95 x 34mm



**EC1912**

Size: 188 x 120 x 37mm



**EC2370**

Size: 230 x 70 x 33mm



**EC0505**

Size: 50 x 50 x 31mm



**EC1165**

Size: 115 x 65 x 33mm



**EC0904**

Size: 93 x 38 x 31mm



# Sheet metal housing



## EFX HS60

60 x 105 x 39mm  
2mm, aluminum  
black anodization



## CTR HS240

240 x 55 x 38mm  
1.5mm, aluminum  
black powder coating



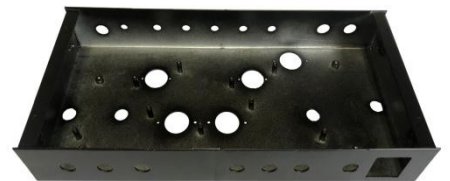
## EFX HS105

105 x 150 x 48mm  
1.5mm, steel  
black powder coating



## FS4 HS270

270 x 108 x 41mm  
1.2mm, steel  
black powder coating



## SET HS320

320 x 150 x 50mm  
1.2mm, steel  
black powder coating

Welcome **OEM** orders for **custom-made** dimensions



# Cables

## DC21ST-BK

### 2.1mm Standard Barrel Cable



The most widely used cable with 2.1mm barrel connectors and standard (center negative) polarity. Either the straight or right angle connector can be plugged into the pedal.  
Power Supply Connector: 2.1mm Straight Barrel Plug  
Pedal Connector: 2.1mm Right Angle Barrel Plug  
Polarity: Standard (Center Negative)  
Length: 20 in / 50 cm

## DC25ST-GY

### 2.5mm Right Angle Barrel Cable



A GREY cable with a 2.1 mm straight & 2.5mm right angle barrel connectors.  
Power Supply Connector: 2.1mm Straight Barrel Plug  
Pedal Connector: 2.5mm Right Angle Barrel Plug  
Polarity: Standard (Center Negative)  
Length: 20 in / 50 cm

## DC21RS-RD

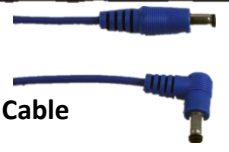
### 2.1mm Reverse Polarity Barrel Cable (Center Positive)



A cable with 2.1mm barrel connectors and reverse (center positive) polarity made for Jangle box, some full tone pedals, some Moogerfooger and others.  
Power Supply Connector: 2.1mm Straight Barrel Plug  
Pedal Connector: 2.1mm Right Angle Barrel Plug  
Polarity: Reverse (Center Positive)  
Length: 20 in / 50 cm

## DC25RS-BU

### 2.5mm Reverse Polarity Barrel Cable (Center Positive)



A BLUE cable with a 2.1mm straight & 2.5mm right angle barrel connectors and reverse (center positive) polarity, designed to power some of Line 6, Electro-Harmonix and Voodoo Lab Pedals/Switchers.  
Power Supply Connector: 2.1mm Straight Barrel Plug  
Pedal Connector: 2.5mm Right Angle Barrel Plug  
Polarity: Reverse (Center Positive)  
Length: 20 in / 50 cm

## DC35ST-BK

### 3.5mm (1/8") Right Angle Mini Plug and 2.1 mm Straight Barrel Cable



A cable with a 2.1mm straight barrel and a right angle 3.5mm mini plug with standard (tip positive) polarity. The 3.5mm mini plug cable connection is compatible with some older vintage pedals.  
Power Supply Connector: 2.1mm Straight Barrel Plug  
Pedal Connector: 3.5mm Straight Mini Plug  
Polarity: Standard (Tip Positive)  
Length: 20 in / 50 cm

## DC9VBT-BK

### 9V Battery Snap & 2.1mm Straight Barrel Cable



A battery snap works with any effect that runs on 9V battery including vintage pedals without power jacks.  
Power Supply Connector: 2.1mm Straight Barrel Plug  
Pedal Connector: 9V Battery Snap  
Length: 20 in / 50 cm

# Cables

## **DBACur-BK** **Current Double Adapter**



For pedals with higher power requirements, the Current Double Adapter combines the current of two outputs to power a single pedal. It features two BLACK 2.1mm barrel plugs to a single 2.1mm jack for use with any standard power cable with a 2.1mm plug. Please note that this adapter will not combine the voltages of the original outputs. Only the current supply will be combined.

Power Supply Connector: 2.1mm Straight Barrel Plug (2)

Pedal Connector: Jack for 2.1mm Plug

Polarity: Standard (Center Negative)

Length: 6.4 in / 16 cm

## **DBAVol-GN** **Voltage Double Adapter**



For pedals with higher voltage requirements, the Voltage Double Adapter will combine two 9V or 12V Pedal Power outputs to create a single 18V or 24V output. This adapter features two BLACK 2.1mm barrel plugs to a single GREEN 2.1mm jack for use with any standard power cable with a 2.1mm plug.

Power Supply Connector: 2.1mm Straight Barrel Plug (2)

Pedal Connector: Jack for 2.1mm Plug

Polarity: Standard (Center Negative)

Length: 6.4 in / 16 cm

## **DBCVol-BK** **Voltage Double Cable**



For pedals with higher voltage requirements, the Voltage double cable will combine two 9V or 12V Pedal Power outputs to create a single 18V or 24V output.

Power Supply Connector: 2.1mm Straight Barrel Plug (2)

Pedal Connector: 2.1mm Straight Barrel Plug

Polarity: Standard (Center Negative)

Length: 20 in / 50 cm

## **OSC145-BK** **Output Splitter Cable**



A daisy chain cable, has 1 Input and 5 Outputs. It allows 1-5 pedals to share a single Pedal Power output - example, one 9V out splits into five 9V outs.

Power Supply Connector: Jack for 2.1mm Plug

Pedal Connector: 2.1mm Right Angle Barrel Plug (5)

Polarity: Standard (Center Negative)

Length: 12 in / 30 cm

# Knob & Battery compartment

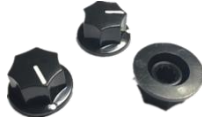
**EK1001**

Plastic ABS  
32x13.5, 18 teeth shaft



**EK1002**

Plastic ABS  
φ20x11.5, 18 teeth shaft



**EK1003**

Plastic ABS  
φ20x11.5, 18 teeth shaft



**EK1004**

Plastic two-color  
φ15x14.5,  
18 teeth shaft



**EK1041B**

Plastic ABS  
φ19x14.5,  
φ6.4 mounting hole  
with locking screw



**EK1041C**

Plastic ABS  
φ19x14.5,  
18 teeth shaft



**EK1101**

Plastic + Aluminum  
(Golden color)  
Φ20x16, 18 teeth shaft



**EK1102**

Plastic + Aluminum  
(Silver color)  
Φ20x16, 18 teeth shaft



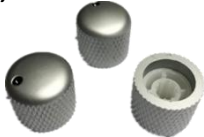
**EK1103**

Plastic + Aluminum  
(Silver color)  
φ23.5x14.5. With locking  
screw



**EK1201**

Aluminum  
Φ18x17, 18 teeth shaft



**EK1202**

Aluminum  
Φ12.5x13, 18 teeth shaft



**EK1203**

Aluminum  
Φ15x15, D shaft



**EK1204**

Aluminum  
Φ14.5x16.5, 18 teeth  
shaft



**EB101**

Plastic ABS  
For single 9V Battery  
Separate cover  
battery with wire not included

**EB102**

Plastic ABS  
For single 9V Battery  
Integrated cover  
Battery pole piece  
with wire included  
Battery not included

