

SIMRAD[®]

Instruments App Guide

ENGLISH



V 1.0

www.simrad-yachting.com

CONTENTS

3 Preface

4 Overview

4 Instrument dashboards

5 Dashboard selection

6 Creating a new dashboard

6 Clone a dashboard

7 Dashboard options

7 Gauge attributes

8 Editing dashboards

8 Edit your own dashboards

9 Gauge settings

PREFACE

⚠ WARNING: Refer to important safety information in the operator manual and review all warnings, limitations, and disclaimers before using this product.

Disclaimer

This product is not a substitute for proper training and prudent seamanship. It is the owner's sole responsibility to install and use the equipment in a manner that will not cause accidents, personal injury or property damage. The user of this product is solely responsible for observing maritime safety practices.

Navigational features that appear in this guide are not a substitute for proper training and prudent seamanship. They do not replace a human navigator and SHOULD NOT be relied on as a sole or primary source of navigation. It is the operator's sole responsibility to use more than one navigational methods to ensure the route suggested by the system is safe.

NAVICO HOLDING AS AND ITS SUBSIDIARIES, BRANCHES AND AFFILIATES DISCLAIM ALL LIABILITY FOR ANY USE OF THIS PRODUCT IN A WAY THAT MAY CAUSE ACCIDENTS, DAMAGE OR THAT MAY VIOLATE THE LAW.

This manual represents the product as at the time of printing. Navico Holding AS and its subsidiaries, branches and affiliates reserve the right to make changes to the product and/or specifications at any time without notice. Please contact your nearest distributor if you require any further assistance.

Copyright

Copyright © 2022 Navico Holding AS.

Trademarks

®Reg. U.S. Pat. & Tm. Off, and ™ common law marks. Visit www.navico.com/intellectual-property to review the global trademark rights and accreditations for Navico Holding AS and other entities.

- Navico® is a trademark of Navico Holding AS.
- Simrad® is a trademark of Kongsberg Maritime AS, licensed to Navico Holding AS.

Internet usage

Some features in this product use an internet connection to perform data downloads and uploads. Internet usage via a connected mobile/cell phone internet connection or a pay-per-MB type internet connection may require large data usage. Your service provider may charge you based on the amount of data you transfer. If you are unsure, contact your service provider to confirm rates and restrictions. Contact your service provider for information about charges and data download restrictions.

About this manual

Product features

Features described and illustrated in this guide may vary from your display unit due to continuous development of the software.

Document updates

For the latest version of this document in supported languages, visit: www.simrad-yachting.com.



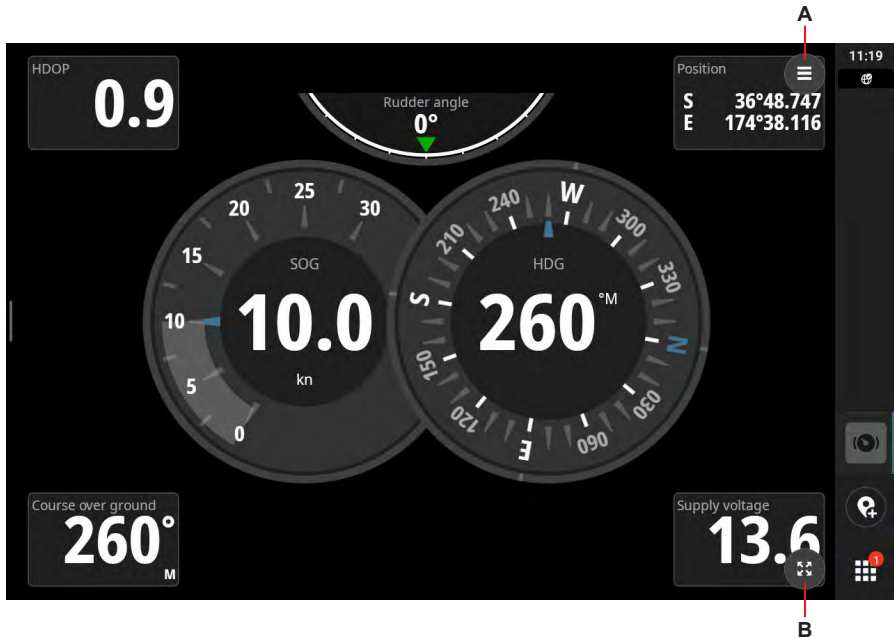
OVERVIEW

The Instruments app can be used to view data in dashboards. You can create your own dashboards or use predefined dashboards.

The data that can be shown in the dashboards depends on the equipment connected to your system.

INSTRUMENT DASHBOARDS

A dashboard consists of one or more analog, digital, or bar gauges.



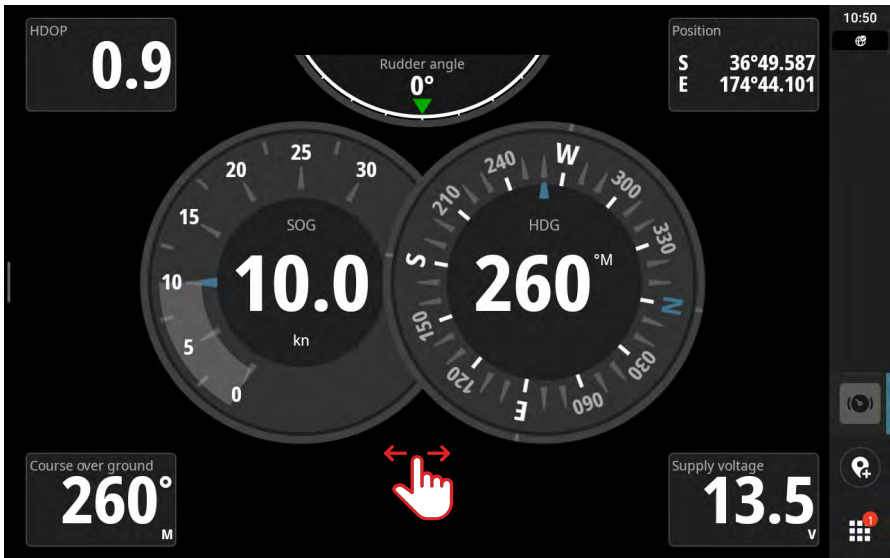
- A Menu button
- B Full screen button

→ **Note:** The menu and full screen buttons will automatically be hidden 3 seconds after the last touch input. Just touch the screen again to see them.

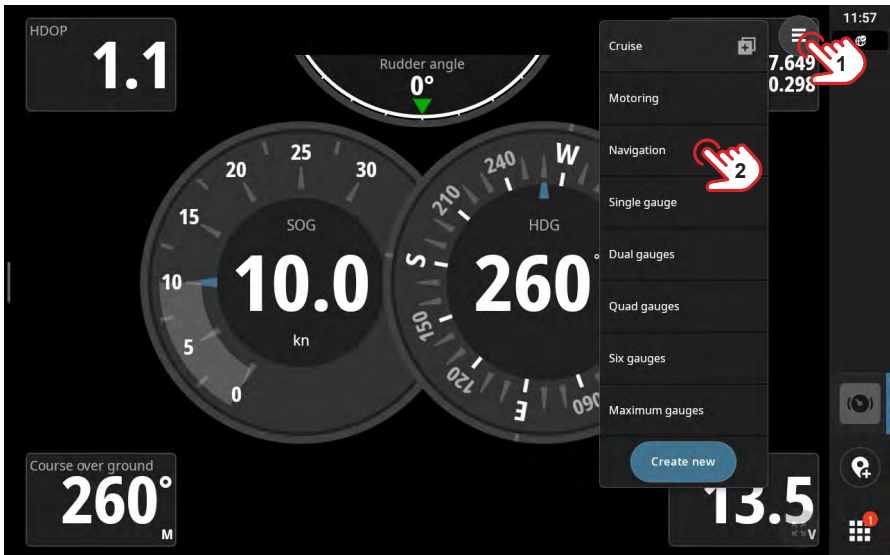


DASHBOARD SELECTION

You can switch between dashboards by swiping left or right on the screen.

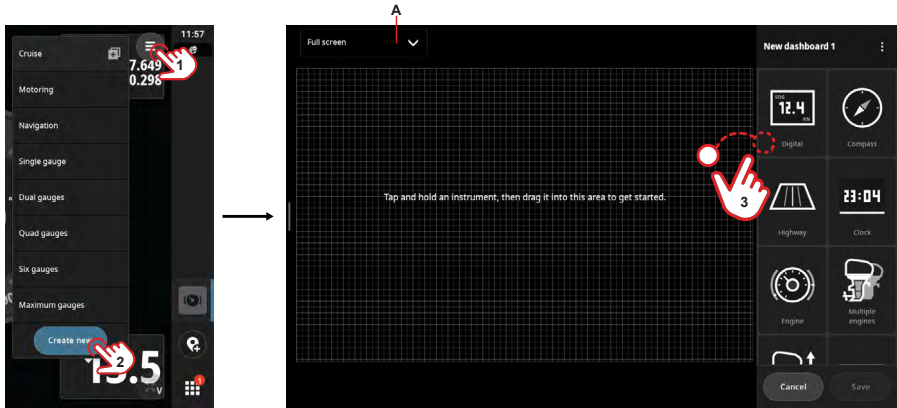


You can also directly choose a dashboard from the menu button. Select the menu button (1), then select from the available presets (2).




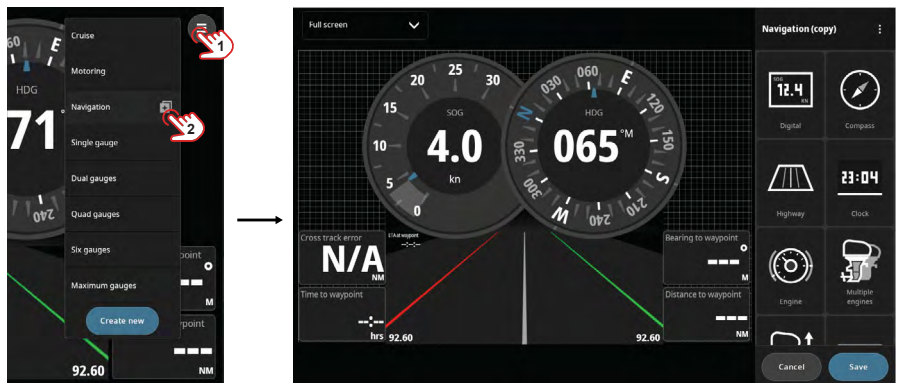
CREATING A NEW DASHBOARD

Select the menu button (1), select **Create new** (2), then select from preset dashboard sizes (A), the default is **Full screen**. Drag-and-drop gauges (3) where you would like to position them. You can move a gauge to a new position on the dashboard by dragging it. Select **Save** to save your dashboard.




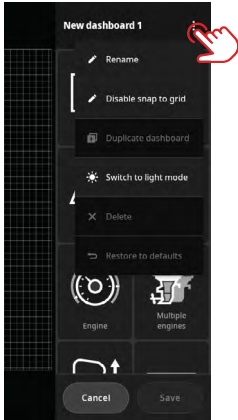
Clone a dashboard

You can clone an existing dashboard to then customize it. Select the menu button (1), then select  (2) next to the dashboard you want to clone. A copy is created, select **Save** when you are done.



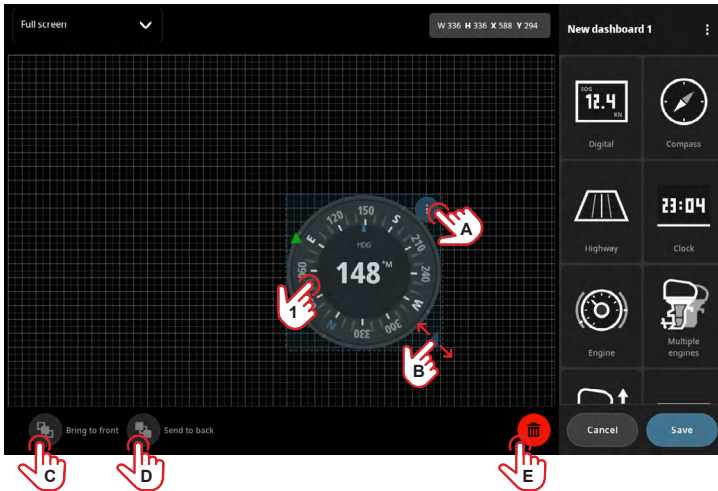
Dashboard options

The dashboard's **More** button  gives you access to dashboard attributes and options.



Gauge attributes

When you select a gauge on a dashboard, you can adjust its attributes and display options.



Select the gauge you want to make changes to (1), then use the following options to make adjustments:

- A Gauge settings – select to view/adjust the gauge settings.
- B Resize gauge - select and drag to resize the gauge.
- C Bring to front - to place the selected gauge in front of other gauges.
- D Send to back - to place the selected gauge behind other gauges.
- E Delete button - select to delete the gauge.

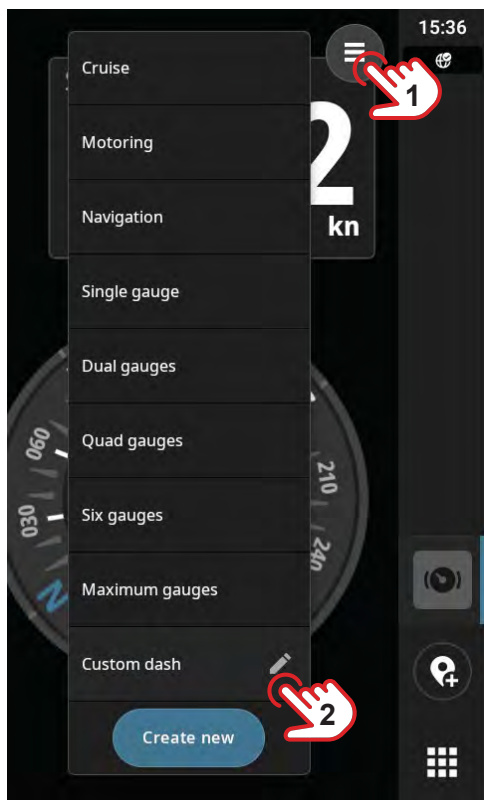


EDITING DASHBOARDS

You can edit your own dashboards and you can change the gauge attributes on all dashboards (your own dashboards and those that are predefined).

Edit your own dashboards

Open the custom dashboard you want to edit. Select the menu button (1) and then the Edit dashboard (2) button.



You can then make changes to the custom dashboard in the same way as creating, adding, and configuring individual gauges.

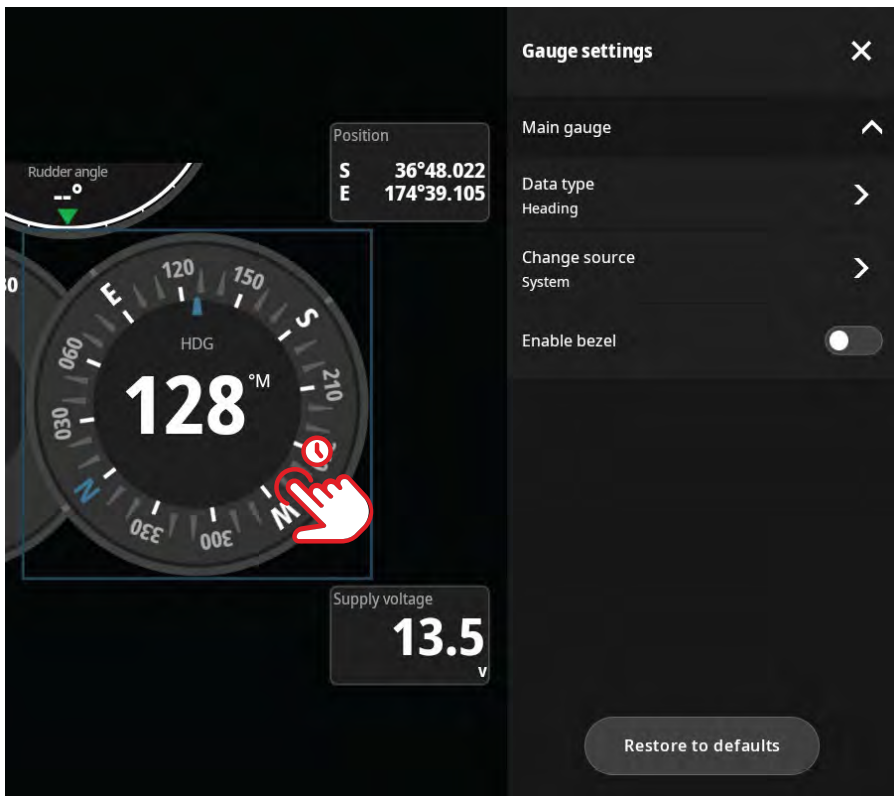
→ *Note: Predefined dashboards cannot be edited or deleted.*



GAUGE SETTINGS

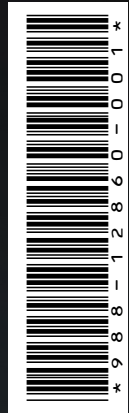
On any dashboard, select and hold a gauge to open the **Gauge settings** panel. Press the **X** button when you have completed your changes.

Select **Restore to defaults** to reset the gauge to its factory default settings.



→ *Note: The restore to default action resets the gauge to factory settings and cannot be undone.*





©Reg. U.S. Pat. & Tm. Off. and ™ common law marks.
Visit www.navico.com/intellectual-property to review
the global trademark rights and accreditations for
Navico Holding AS and other entities.

www.simrad-yachting.com