

View looking down on the tank.  
Treat this diagram like a clockface.  
DISCHARGE is set at 12 o'clock.  
Indicate the relative position for INLETS  
CABLE DUCT and VENT if required.

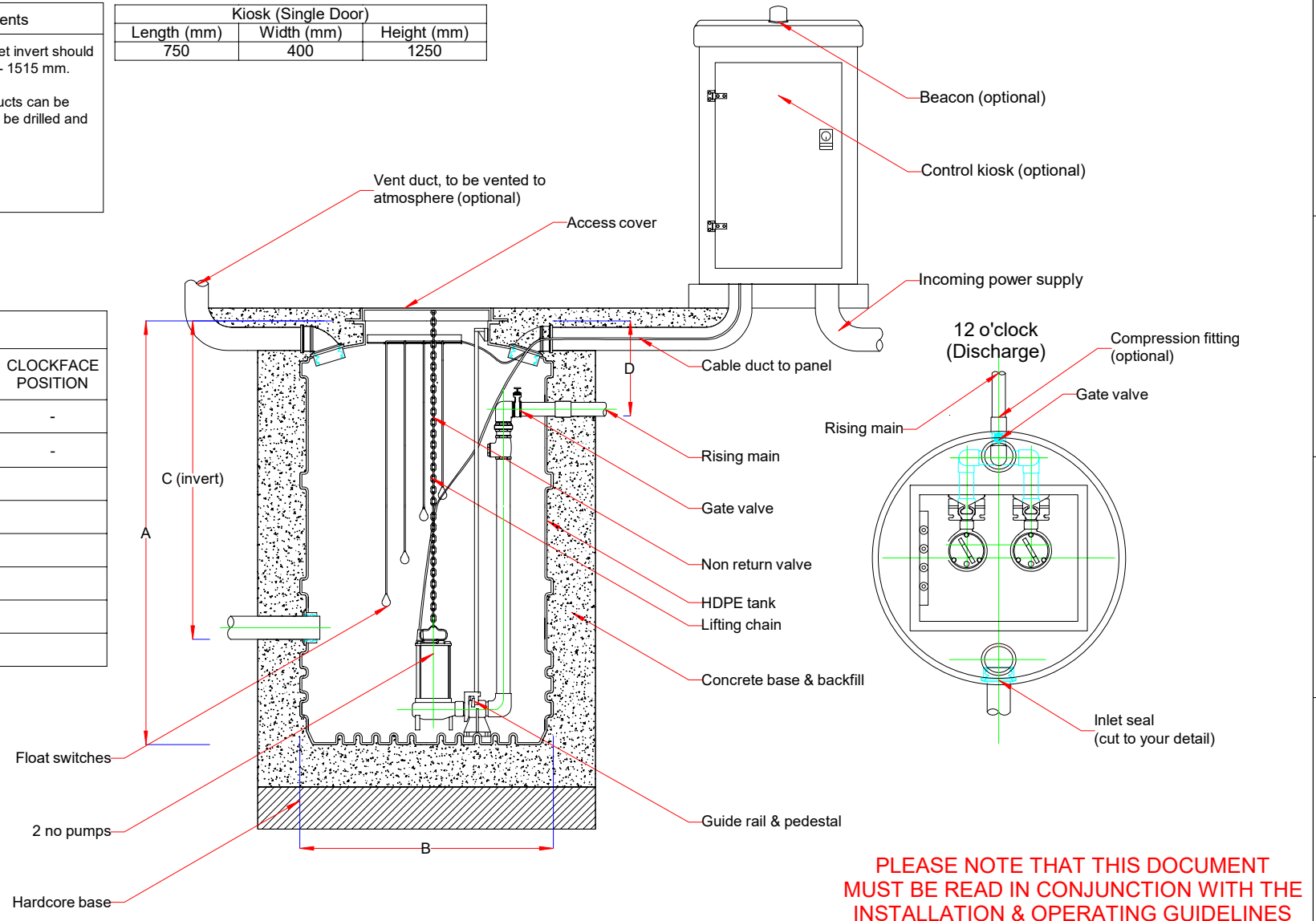
**Comments**

Please Note - Inlet invert should be between 400 - 1515 mm.

Inlet seals and ducts can be supplied loose to be drilled and fitted on site

Kiosk (Single Door)		
Length (mm)	Width (mm)	Height (mm)
750	400	1250

Fabrication Specifications				
ITEM	INDEX	DEPTH (mm)	DIA. (mm)	CLOCKFACE POSITION
Tank depth	A	2000	-	-
Tank Ø	B	-	1200	-
Inlet	C1		110	
Inlet	C2			
Inlet	C3			
Discharge	D		63	
Cable duct			110	
Vent			110	



**PLEASE NOTE THAT THIS DOCUMENT MUST BE READ IN CONJUNCTION WITH THE INSTALLATION & OPERATING GUIDELINES**

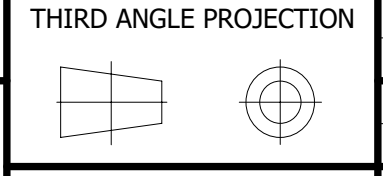
REV	DETAIL	DATE	DRAWN

**TITLE**

Twin rigged  
Ø1200 x 2000 mm  
typical layout

DRAWING NO	DATE
DPT112128	05/12/2018

DRAWN	SCALE
gf	NOT TO SCALE



TOLERANCE +/- 2%

SHEET	REV
1 of 1	0

**CUSTOMER**