

Ozo-Pure Plus Description

- Max. 30 LPM flow through system, uses rainwater tank pump (should have it's own pump controller, variable or fixed speed) to deliver water
- Inlet self-washing filter (backwash frequency adjustable for minimum water loss)
- Electrolytic unit; generates active oxygen species (incl. oxygen, ozone, hydroxyl radical) directly into water – purifies and refreshes the water
- Contact vessel
- Whisper quiet circulation pump for water refresh
- Outlet self-washing carbon filter (backwash frequency adjustable for minimum water loss)
- Outlet post carbon filter sanitiser – instant-on UV disinfection (only on when water is being produced, so very long life)
- Electrical control control panel; system starts automatically when water is needed
- ¾" In/Out Connections, 40mm waste connection (for filter backwash)

Ozo-Pure Plus 30 60cmW x 40cmD x 120cmH



4

3

2

1

D

D

C

C

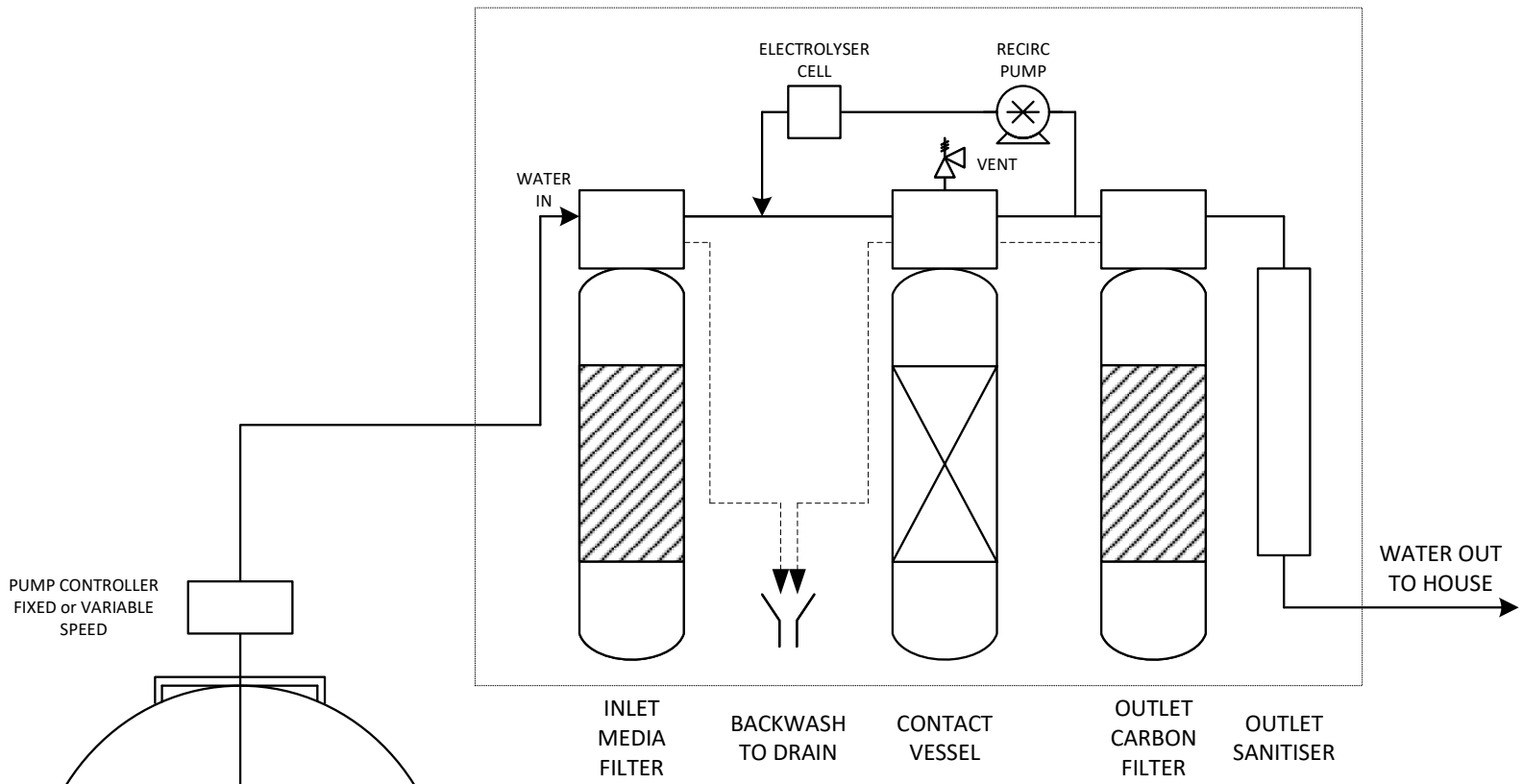
B

B

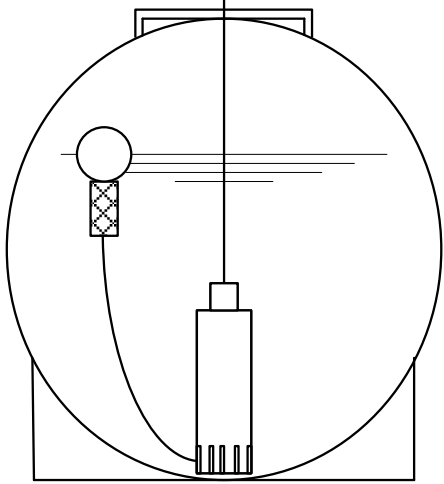
A

A

OZO-PURE PLUS



PUMP CONTROLLER
FIXED or VARIABLE
SPEED



Rainwater Harvesting System

INLET
MEDIA
FILTER

BACKWASH
TO DRAIN

CONTACT
VESSEL

OUTLET
CARBON
FILTER

OUTLET
SANITISER

WATER OUT
TO HOUSE

Ozone Water
Abbeyvale, Dromahair, Co. Leitrim, Ireland
Email: ozonetech@live.ie

| | | | |
|----------------------|-----------------|--------|----------|
| Ozo-Pure Plus | | | |
| Schematic | | | |
| SIZE A4 | Drawn By: OL | DWG NO | REV 6 |
| SCALE NTS | SHEET | | 1 of 1 |

© COPYRIGHT. THIS DRAWING AND PROCESS DESIGN IS NOT TO BE COPIED OR DUPLICATED OR IN ANY WAY UTILIZED WITHOUT THE WRITTEN CONSENT OF OWEN LEONARD OR OZONE WATER

4

3

2

1