



Flow Control Systems

Orifice Flow Control Chamber



Product Type: Orifice Flow Control

Model: OFCC600

600mm diameter, pre-assembled protected flow control chamber, delivered ready to install. This model uses 225mm or 300mm main channel socket connections including two further 150mm side inlets at 90°, 270° off centre from the outlet at 0°. Side inlets are supplied as blanked ends that can be used as required.

Application

- Above ground access for inspection and maintenance of surface water pipe systems.
- Suitable for Adoptable and Non-Adoptable applications.
- Maximum installation depth to soffit of pipe - Adoptable 3000mm and Non-Adoptable 3000mm.
- Designed for large housing or commercial developments.

Built to the following standards

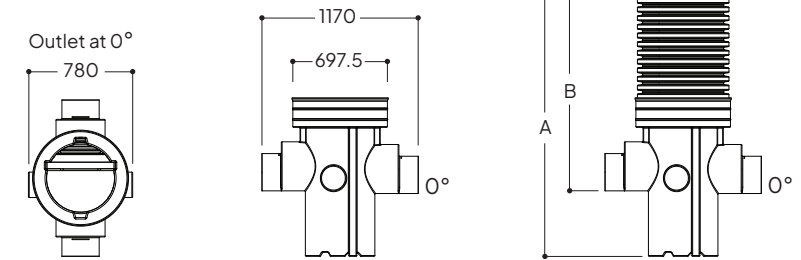
- Design & Construction Guidance (DCG) - Type D & E Chambers
- Buildings Regulations part H
- BS EN 13598-1 & 2
- BS EN 681-1

Features

- Single piece, pre-assembled chambers.
- Durable rotational moulded LLDPE base - chemical and impact resistant.
- 515mm sump depth.
- Compatible with all UK Twinwall pipe systems.
- Profiled base which improves overall strength.
- Four standard depths available.
- Access shafts are easily cut onsite to the required depth.
- Chambers can be installed in granular backfill.

Quality Assurance

Before leaving our factory, chambers are tested in accordance to required standards.



Model ref.	Main Pipework Connections Ø (mm)	Optional Side Inlets Ø (mm)	Overall Depth A (mm)	Inlet Invert B (mm)	Approx. Weight (kg)
OFCC600B/1.5	225, 300	150	1490	980	37
OFCC600B/2	225, 300	150	2010	1500	47
OFCC600B/2.4	225, 300	150	2400	1890	54
OFCC600B/3	225, 300	150	2985	2475	65

- Chambers over 1000mm soffit depth require our reduction/restriction caps to meet DCG.
- Inlet Invert measurements accurate to main channel socket. This measurement will vary depending on pipework used.
- We provide a range of adaptors to connect to various pipework dimensions and pipework types including Marley Quantum, Polysewer and UltraRib.

Our BLOK Filter Technology Within The Oriflo Range

This model is within our protected Oriflo range. This range includes a filter to prevent total suspended solids (TSS) including silt from reaching the flow control unit and migrating into the waterway, improving the design life and effectiveness of the product.



What information do we need to design your ORIFLO chamber?

We have a large range of flow control chambers allowing us to help tailor your choice to what would be best for your implementation. For this we will require:

- Orifice size
- Pipework sizes and configurations
- Invert depths

If you are unsure on the orifice size, you can use our Oriflo Orifice Size Calculator on our website to calculate what orifice size you would need for your chamber.

www.turtleenviro.co.uk/oriflo-OFCC600/#oriflo-calculator