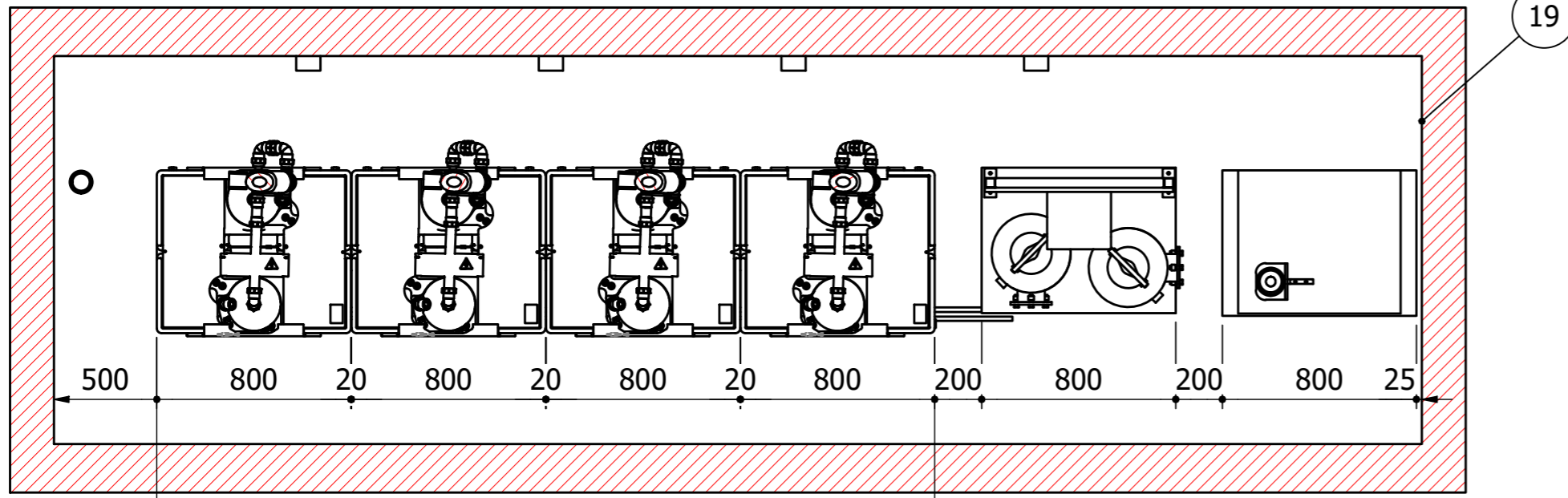
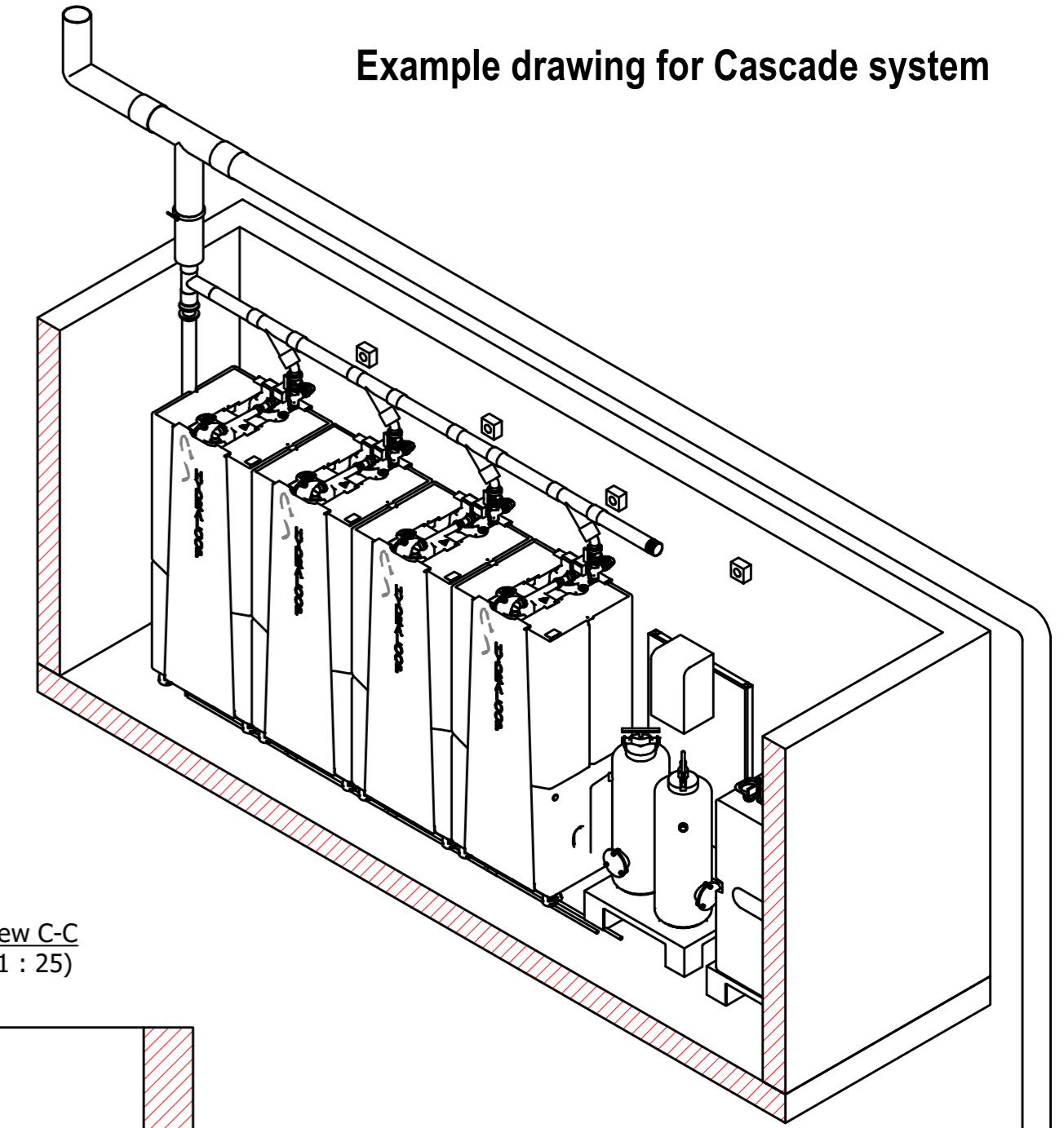
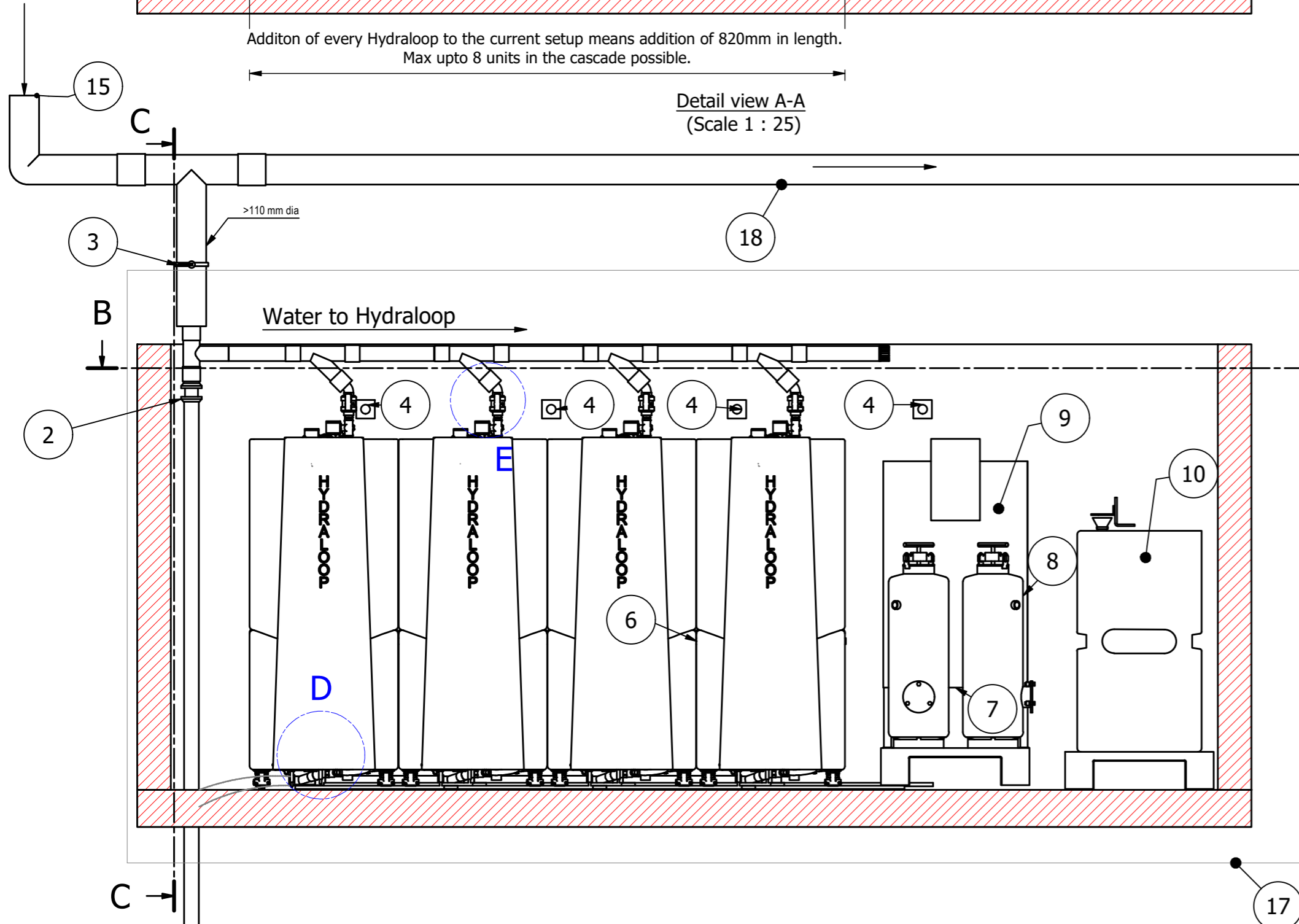


Detailview B-B  
(Scale 1 : 25)

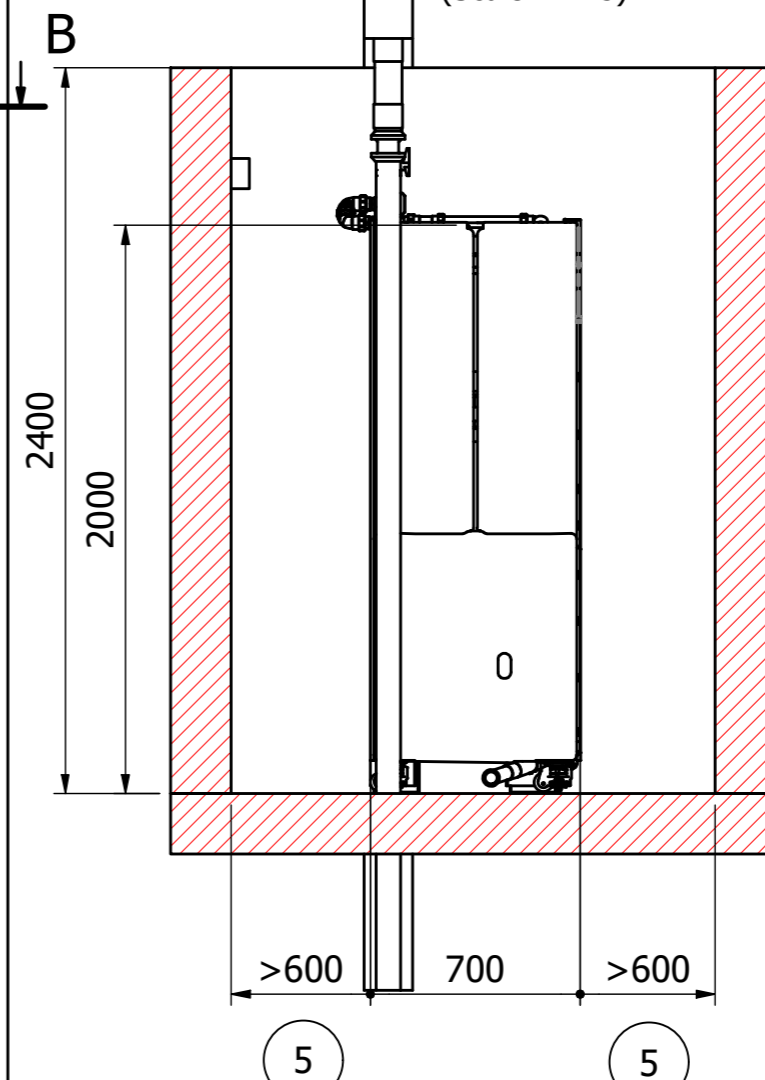


Additon of every Hydraloop to the current setup means addition of 820mm in length.  
Max upto 8 units in the cascade possible.

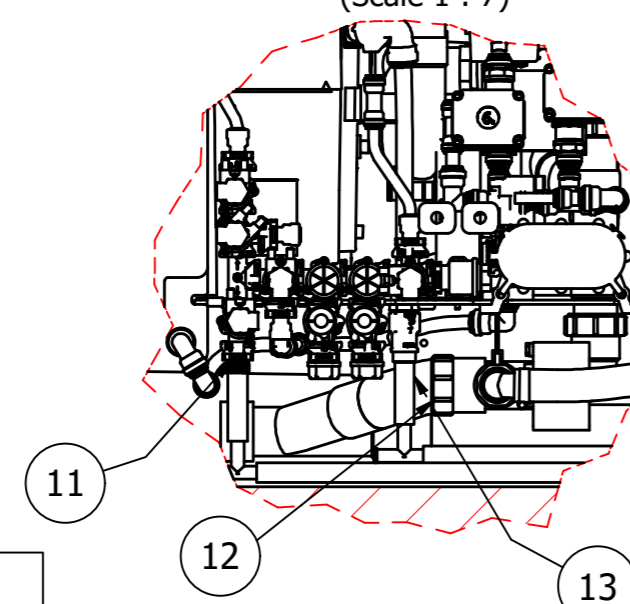
Detail view A-A  
(Scale 1 : 25)



Detail view C-C  
(Scale 1 : 25)



Detail D  
(Scale 1 : 7)



Detail E  
(Scale 1:7)

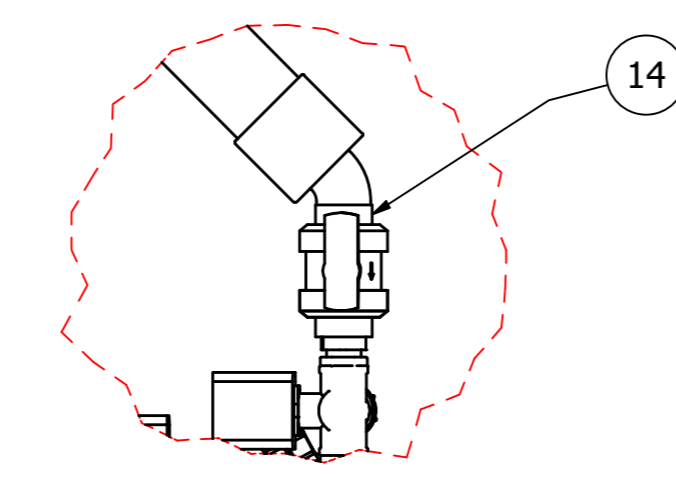


TABLE		
Sr no	Description	Size
1	Sewage outlet from cascade + Sediment cleaning	
2	Valve for sediment cleaning (normally closed)	
3	Valve for water distribution (normally open)	
4	Power plug preferably > 2m from the ground	
5	Recommended maintenance distance ~800 mm	
6	Inlet for citric acid cleaning	
7	Clean water outlet	
8	Input from cascade	
9	Polisher	
10	Polisher tank	500 Lit
11	Auxillary outlet	1/2" dia
12	Sewage water outlet	50 mm dia
13	Backup water inlet from polisher	1/2" dia
14	Water inlet	40 mm dia
15	Main sewage inlet	
16	To Main sewage	
17	All fittings and pipings inside indicative region provided by Hydraloop	
18	Greywater	
19	Installation room	

**HYD0764AA**

**NOTES -**  
1. Representative for the cascade system.  
2. All units are in mm