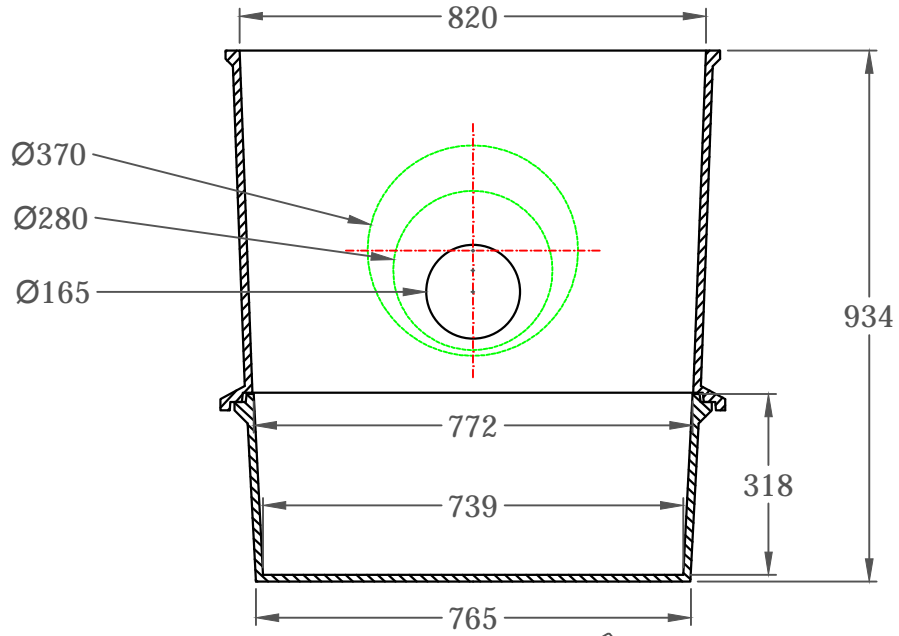
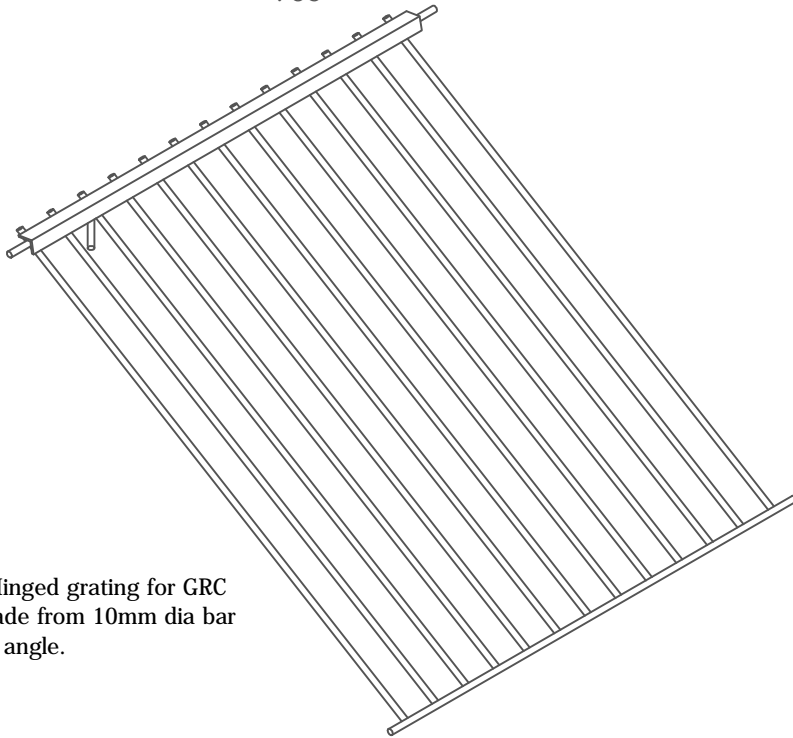
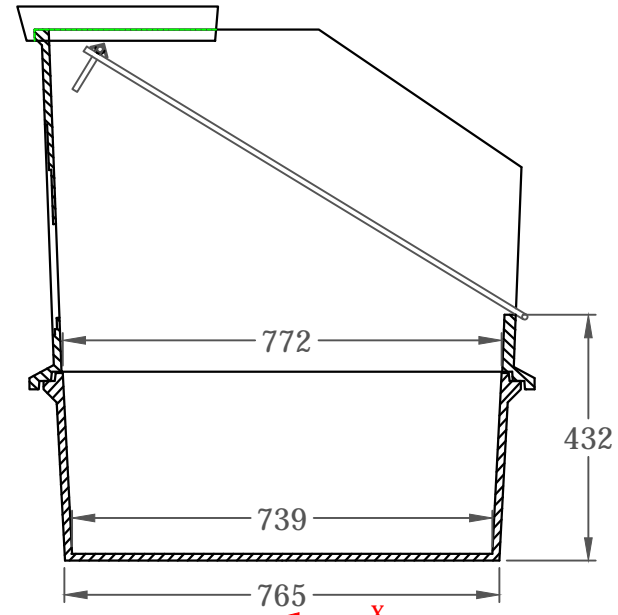


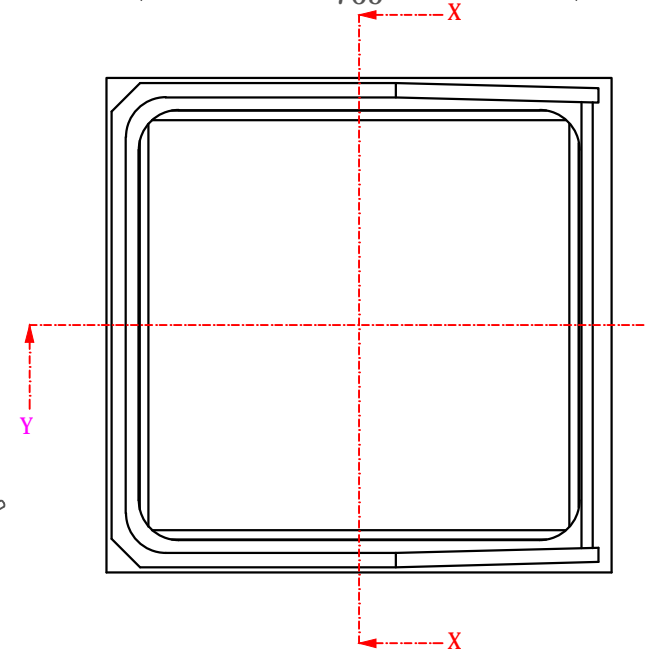
Section XX with  
grating and lid removed



Section YY



Standard Hinged grating for GRC  
silt trap made from 10mm dia bar  
and 25x25 angle.



Plan View with grating and lid removed

- NOTES:**
- All dimensions in mm U.O.S
  - All measurements ± 1mm
- Material**
- Characteristic compressive strength of Glass Reinforced Concrete = 60N/mm<sup>2</sup>
  - Characteristic flexural strength of Glass Reinforced Concrete = 6N/mm<sup>2</sup>
  - Free water Cement ratio: <0.55
  - Glass fibres - 63kg/m<sup>3</sup>
  - Specification: XA2, DS2, DC2

**PROPRIETARY & CONFIDENTIAL**

The information contained in this drawing is the sole property of J.K.H Drainage Units Limited.  
Any reproduction in part or as a whole without the written permission of J.K.H Drainage Units Limited is strictly prohibited.

DRAWING TITLE / PROJECT:

**GRC Square Silt Trap**  
(Glass Reinforced Cement)

|               |        |                          |
|---------------|--------|--------------------------|
| CLIENT:       | Client |                          |
| SCALE:        | NTS    | DRAWING DATE: 17/07/2019 |
| TOTAL WEIGHT: | 130kg  |                          |
| DRAWN BY:     | LC     | CHECKED BY: -            |
| DRAWING No:   |        |                          |

**GRC Square Silt Trap**

DO NOT SCALE DRAWING