



Product Type: Catchpit Chambers

Model: AICCP600225150B

600mm diameter, pre-assembled catchpit chamber, delivered ready to install. This model has a rotational moulded chamber base with 150mm or 225mm main channel socket connections including two further 150mm or 225mm side inlets at 90°, 270° from the outlet at 0°. Side inlets are supplied as blanked ends that can be used as required.

Application

- Above ground access for inspection and maintenance of surface water pipe systems.
- Suitable for Adoptable and Non-Adoptable applications.
- Maximum installation depth to soffit of pipe - Adoptable 3000mm and Non-Adoptable 3000mm.

Built to the following standards

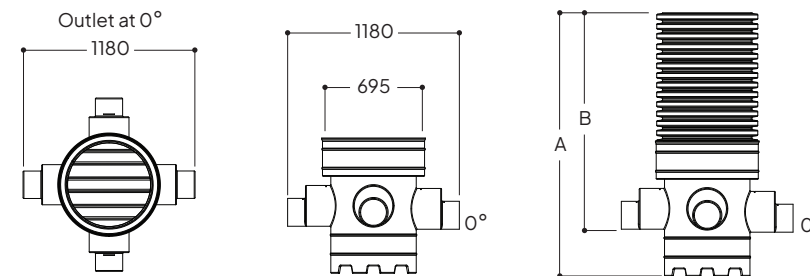
- Design & Construction Guidance (DCG) - Type D & E Chambers
- Buildings Regulations part H
- BS EN 13598-1 & 2
- BS EN 681-1

Features

- Single piece, pre-assembled chambers.
- Durable rotational moulded LLDPE base - chemical and impact resistant.
- 300mm sump depth.
- Compatible with all UK Twinwall pipe systems.
- Profiled base which improves overall strength.
- Base and five standard depths available.
- Access shafts are easily cut onsite to the required depth.
- Chambers can be installed in granular backfill.

Quality Assurance

Before leaving our factory, chambers are tested in accordance to required standards.



Model ref.	Main Pipework Connections Ø (mm)	Optional Side Inlets Ø (mm)	Overall Depth A (mm)	Inlet Invert B (mm)	Approx. Weight (kg)
AICCP600225150B (Base)	150, 225	150, 225	920	580	16
AICCP600225150B/1	150, 225	150, 225	1055	715	28
AICCP600225150B/1.5	150, 225	150, 225	1450	1110	36
AICCP600225150B/2	150, 225	150, 225	1965	1625	46
AICCP600225150B/2.4	150, 225	150, 225	2355	2015	54
AICCP600225150B/3	150, 225	150, 225	3005	2665	66

- Chambers over 1000mm soffit depth require our reduction/restriction caps to meet DCG.
- Inlet Invert measurements accurate to main channel socket. This measurement will vary depending on pipework used.

Ancillaries



Restriction Cap: 600RCC

The 600RCC sits directly over the Ø600mm chamber shaft to reduce down to Ø320mm to meet with DCG specification on restricted access.



Reduction Cap: 600450RC

The 600450RC Reduction Cap reduces the Ø600mm access to Ø450mm which allows for our 450ACSRA (square access cover) or our 450ACCRA (circular access cover) to be fitted. These covers have a built in restriction of Ø350mm to meet with DCG specification on restricted access.

(See separate data sheets for ancillaries)