



Product Type: Catchpit Chambers

Model: AICCP450225150B

450mm diameter, pre-assembled catchpit chamber, delivered ready to install. This model has a rotational moulded chamber base with 225mm or 150mm main channel socket connections including two further 150mm side inlets at 90°, 270° from the outlet at 0°. Side inlets are supplied as blanked ends that can be used as required.

Application

- Above ground access for inspection and maintenance of surface water pipe systems.
- Suitable for Adoptable and Non-Adoptable applications.
- Maximum installation depth to soffit of pipe - Adoptable 3000mm and Non-Adoptable 3000mm.

Built to the following standards

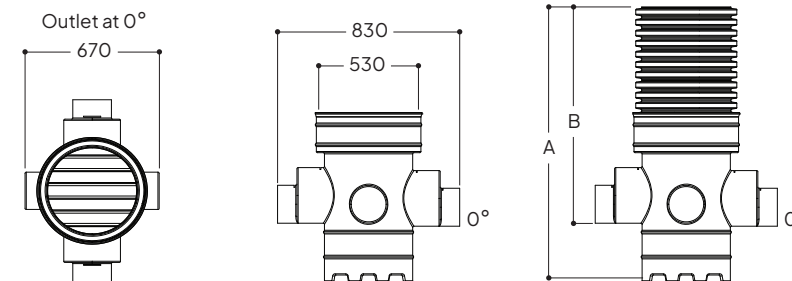
- Design & Construction Guidance (DCG) - Type D & E Chambers
- Buildings Regulations part H
- BS EN 13598-1 & 2
- BS EN 681-1

Features

- Single piece, pre-assembled chambers.
- Durable rotational moulded LLDPE base - chemical and impact resistant.
- 300mm sump depth.
- Compatible with all UK Twinwall pipe systems.
- Profiled base which improves overall strength.
- Base and five standard depths available.
- Access shafts are easily cut onsite to the required depth.
- Chambers can be installed in granular backfill.

Quality Assurance

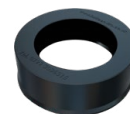
Before leaving our factory, chambers are tested in accordance to required standards.



Model ref.	Main Pipework Connections Ø (mm)	Optional Side Inlets Ø (mm)	Overall Depth A (mm)	Inlet Invert B (mm)	Approx. Weight (kg)
AICCP450225150B (Base)	150, 225	150	850	550	8.5
AICCP450225150B/1	150, 225	150	1077	777	14.5
AICCP450225150B/1.5	150, 225	150	1489	1189	19
AICCP450225150B/2	150, 225	150	2000	1700	24.5
AICCP450225150B/2.4	150, 225	150	2370	2070	29.5
AICCP450225150B/3	150, 225	150	3000	2700	36

- Chambers over 1000mm soffit depth require our reduction/restriction caps to meet DCG.
- Inlet Invert measurements accurate to main channel socket. This measurement will vary depending on pipework used.

Ancillaries



Restriction Cap: **450RCC**

The **450RCC** sits directly over the Ø450mm chamber shaft to reduce down to Ø300mm to meet with DCG specification on restricted access.



Reduction Cap: **450300RC**

The **450300RC** Reduction Cap reduces the Ø450mm access to Ø300mm which allows for our 300ACS access cover to be fitted which will meet DCG specification on restricted access.

(See separate data sheets for ancillaries)

