



Product Type: Inspection Chambers

Model: AIC600225B

600mm diameter, pre-assembled inspection chamber, delivered ready to install. This model has a rotational moulded chamber base with 225mm main channel socket connections including two further 150mm side inlets at 120°, 240° from the outlet at 0°. Side inlets are supplied as blanked ends that can be used as required.

Application

- Above ground access for inspection and maintenance of surface water pipe systems.
- Suitable for Adoptable and Non-Adoptable applications.
- Maximum installation depth to soffit of pipe - Adoptable 3000mm and Non-Adoptable 3000mm.

Built to the following standards

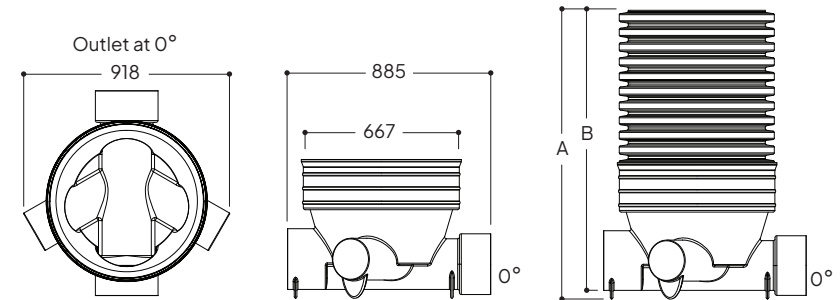
- Design & Construction Guidance (DCG) - Type D & E Chambers
- Buildings Regulations part H
- BS EN 13598-1 & 2
- BS EN 681-1

Features

- Single piece, pre-assembled chambers.
- Durable rotational moulded LLDPE base - chemical and impact resistant.
- Compatible with all UK Twinwall pipe systems.
- Profiled base which improves overall strength.
- Stepped base - 50mm step from side to main channel.
- Base and five standard depths available.
- Chambers include a fall from the main inlet to the outlet to help promote flow.
- Access shafts are easily cut onsite to the required depth.
- Chambers can be installed in granular backfill.

Quality Assurance

Before leaving our factory, chambers are tested in accordance to required standards.



Model ref.	Main Pipework Connections Ø (mm)	Optional Side Inlets Ø (mm)	Overall Depth A (mm)	Inlet Invert B (mm)	Approx. Weight (kg)
AIC600225B (Base)	225	150	650	585	9
AIC600225B/1	225	150	1060	995	29
AIC600225B/1.5	225	150	1530	1465	39
AIC600225B/2	225	150	1930	1865	48.5
AIC600225B/2.4	225	150	2320	2255	56
AIC600225B/3	225	150	3000	2935	68

- Chambers over 1000mm soffit depth require our reduction/restriction caps to meet DCG.
- Inlet Invert measurements accurate to main channel socket. This measurement will vary depending on pipework used.

Ancillaries



Restriction Cap: 600RCC

The 600RCC sits directly over the Ø600mm chamber shaft to reduce down to Ø320mm to meet with DCG specification on restricted access.



Reduction Cap: 600450RC

The 600450RC Reduction Cap reduces the Ø600mm access to Ø450mm which allows for our 450ACSRA (square access cover) or our 450ACCRA (circular access cover) to be fitted. These covers have a built in restriction of Ø350mm to meet with DCG specification on restricted access.

(See separate data sheets for ancillaries)