



### Product Type: Inspection Chambers

#### Model: AIC450225B

450mm diameter, pre-assembled inspection chamber, delivered ready to install. This model has a rotational moulded chamber base with 225mm main channel socket connections including two further 150mm side inlets at 90°, 270° from the outlet at 0°. Side inlets are supplied as blanked ends that can be used as required.

#### Application

- Above ground access for inspection and maintenance of surface water pipe systems.
- Suitable for Adoptable and Non-Adoptable applications.
- Maximum installation depth to soffit of pipe - Adoptable 3000mm and Non-Adoptable 3000mm.

#### Built to the following standards

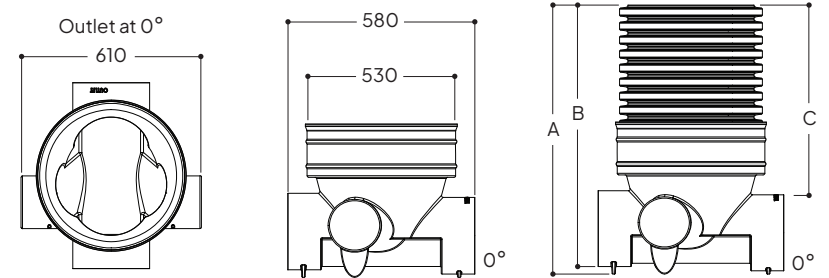
- Design & Construction Guidance (DCG) - Type D & E Chambers
- Buildings Regulations part H
- BS EN 13598-1 & 2
- BS EN 681-1

#### Features

- Single piece, pre-assembled chambers.
- Durable rotational moulded LLDPE base - chemical and impact resistant.
- Compatible with all UK Twinwall pipe systems.
- Profiled base which improves overall strength.
- Stepped base - 60mm step from side to main channel.
- Base and five standard depths available.
- Access shafts are easily cut onsite to the required depth.
- Chambers can be installed in granular backfill.

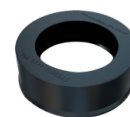
#### Quality Assurance

Before leaving our factory, chambers are tested in accordance to required standards.



Model ref.	Main Pipework Connections Ø (mm)	Optional Side Inlets Ø (mm)	Overall Depth A (mm)	Inlet Invert B (mm)	Depth to Soffit C (mm)	Approx. Weight (kg)
AIC450225B (Base)	225	150	560	495	270	6
AIC450225B/1	225	150	990	925	700	18
AIC450225B/1.5	225	150	1500	1435	1210	24
AIC450225B/2	225	150	2015	1950	1725	31
AIC450225B/2.4	225	150	2400	2335	2110	35
AIC450225B/3	225	150	3000	2935	2710	41

### Ancillaries



#### Restriction Cap: 450RCC

The 450RCC sits directly over the Ø450mm chamber shaft to reduce down to Ø300mm to meet with DCG specification on restricted access.



#### Reduction Cap: 450300RC

The 450300RC Reduction Cap reduces the Ø450mm access to Ø300mm which allows for our 300ACS access cover to be fitted which will meet DCG specification on restricted access.

(See separate data sheet for access covers)