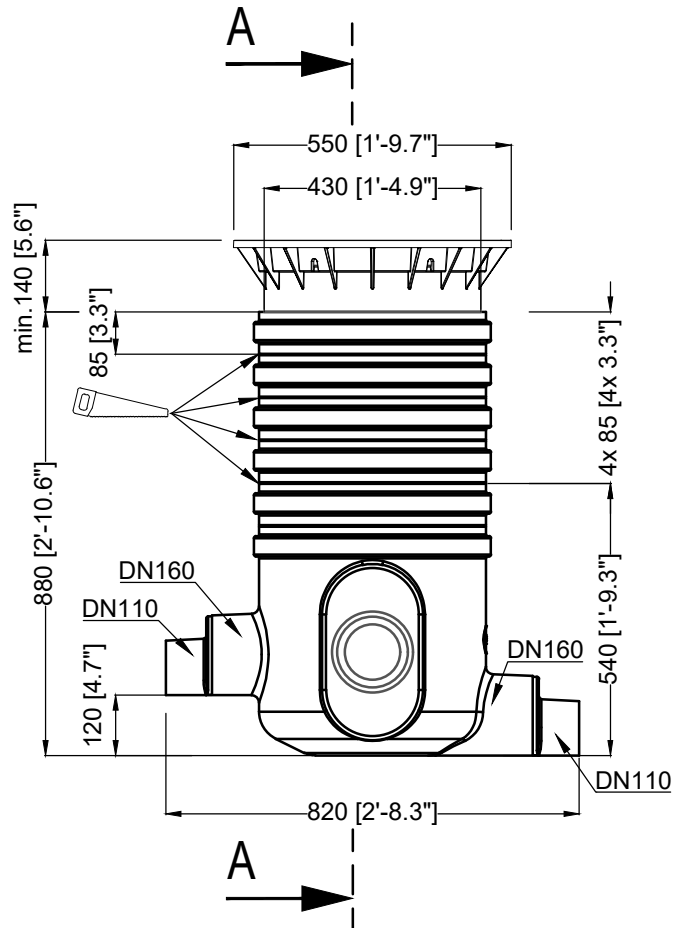
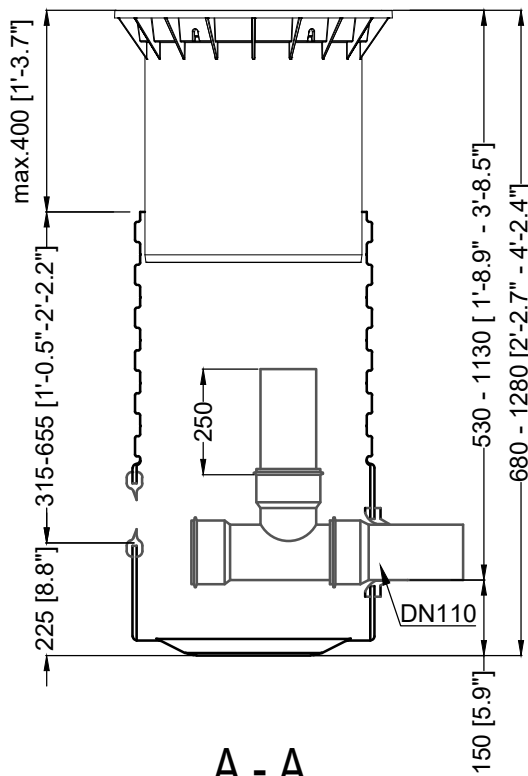
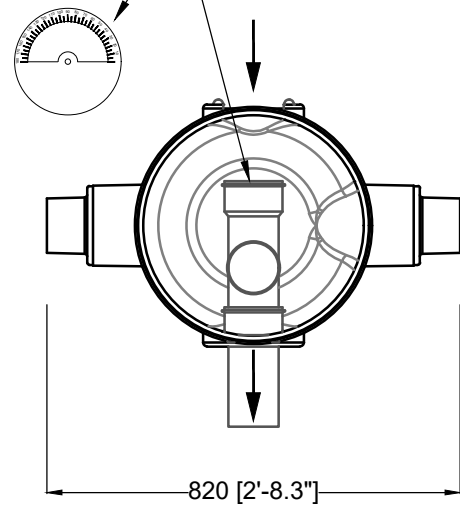



Drossel, Choke



<p>D</p> <p>GRAF Drosselablaufschacht begehbar / PKW-befahrbar</p>		<p>Artikel-Nr. 340028 / 340029 product no. article no. Var. Hebedrosselschacht artículo no.</p>	
<p>GB</p> <p>GRAF Choke drain shaft suitable for pedestrian / vehicle loading</p>	<p>ES</p> <p>GRAF Pozos de estrangulación por peatrones / por coches</p>	<p>FR</p> <p>GRAF Regard Débit Régulé piétons / véhicules</p>	<p>revision</p>
<p>gezeichnet drawn</p> <p>ISC</p>	<p>Gewicht weight</p> <p>13 / 42 kg</p>	<p>Otto Graf GmbH Carl-Zeiss-Str. 2-6 DE-79331 Teningen mail@graf.info www.graf.info</p>	
<p>Datum date</p> <p>2022.11.10</p>	<p>Toleranz tolerance</p> <p>+/- 3%</p>		
<p>Maßstab scale</p> <p>M 1:15</p>	<p>Einheiten units</p> <p>mm [inch] gal. = US gal.</p>		