

## FACT SHEET | Have your building Recycle Ready

With Hydraloop, you can recycle up to 95% of shower and bath water, as well as condensation water from air conditioning and optionally 50% of washing machine water. This enables you to reuse up to 85% of the total in-house water.

In order to install a Hydraloop system, make sure to be well prepared for plug-and-play installation. In this document, you'll find guidelines and plumbing information to make any building Recycle Ready and future proof for sustainable water supply.

### INPUT & OUTPUT

<b>INPUT SOURCES</b>	Grey water from showers, baths, air conditioning and optionally washing machines. <b>At any time: avoid grey water from hand basins, dishwashers, floor drain and kitchen sink.</b>
<b>OUTPUT OPTIONS</b>	Toilets, garden, pool, washing machine, optional faucets for cleaning purposes. <b>At any time: label grey water faucets with a 'non potable water' sign.</b>

### POSITIONING

<b>HYDRALOOP VS INPUT SOURCES</b>	If input sources are located on a higher floor than the Hydraloop system, you can make use of gravity for the input water. In other circumstances you'll need a lift pump. For Hydraloop Qualified lift pumps, see page 3.
<b>WASHING MACHINE</b>	If you want to use the washing machine recycle option for your laundry, we advise to install the Hydraloop system near the washing machine. You can only connect one machine.

### CONDITIONS

<b>ROOM SPECIFICATIONS</b>	Minimum height of the ceiling: 210 cm, 6.10" – Room temperature between 14-35° C   57-95° F. <b>At any time: avoid direct sunlight on the Hydraloop system.</b>
<b>ACCESS TO BACK UP WATER</b>	Tap water or rainwater
<b>ELECTRICITY</b>	100-230 Volt
<b>ONLINE ACCESS</b>	Stable internet with working Wi-Fi connection
<b>WASHING MACHINE WATER INPUT</b>	Only possible with Hydraloop washing machine add-on (sanitary lift pump included)

### PIPING

<b>ISOLATION</b>	Isolate all pipes.
<b>INPUT CONNECTION</b>	Tie all incoming drains into a single pipe (75/50/40 mm   3"/2"/1 1/2") into the inlet (40 mm   1 1/2") on top of the Hydraloop system. Use riser pipes out of the system and branch them out to the output options.
<b>VENTILATION</b>	Don't forget proper ventilation of the inlet pipe (75/50/40 mm   3"/2"/1 1/2") to support grey water flowing into the Hydraloop system without airlocks. Also provide sewer venting to ensure proper functioning of the Hydraloop system.
<b>BYPASS</b>	Install appropriate bypass connections for maintenance
<b>GREY WATER IDENTIFICATION</b>	Label everything. Use color coding or large warning labels to designate that the pipes are running grey water.

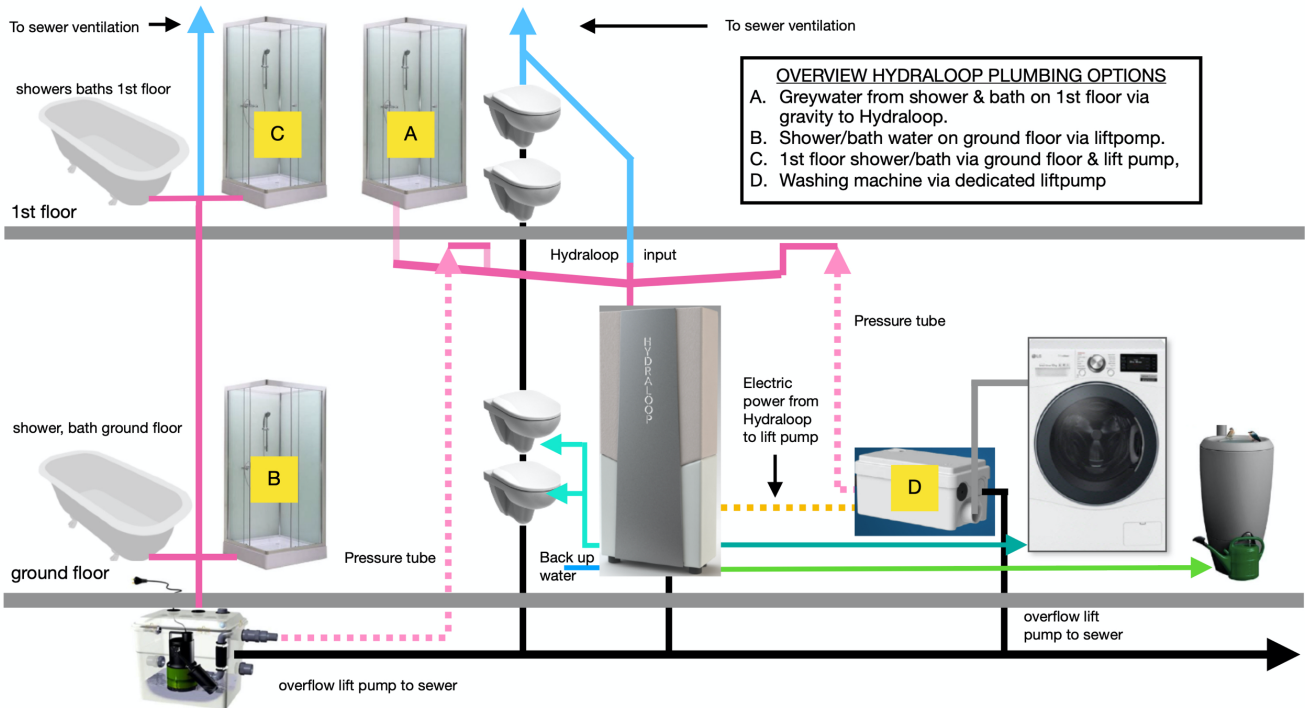
### INPUT CONNECTIONS

<b>GREY WATER INTO HYDRALOOP</b>	40 mm   1 1/2" connections
<b>BACKUP WATER</b>	1/2" male thread, minimum water flow of 20 liters   5.3 gallons p/m, 29 psi / 2.2 bar. If pressure is higher (max. 55 psi / 4 bar), install expansion vessel and 50Mu mash filter.

### OUTPUT CONNECTIONS

<b>WASTEWATER TO SEWER</b>	40 mm   1 1/2" connection to sewer – Sewer connection (75 to 50 mm  3" to 2") with rubber manchet underneath or behind the Hydraloop system into floor or wall.
<b>RECYCLED WATER TO TOILET</b>	1/2" male thread – Prepare plumbing underneath or behind Hydraloop system. Connect with flexible hose.
<b>RECYCLED WATER TO WASHING MACHINE</b>	1/2" male thread – Prepare plumbing underneath or behind Hydraloop system. Connect with flexible hose.
<b>RECYCLED WATER TO GARDEN/POOL</b>	1/2" male thread – Prepare plumbing underneath or behind Hydraloop system. Connect with flexible hose.

**SCHEMATIC OVERVIEW**

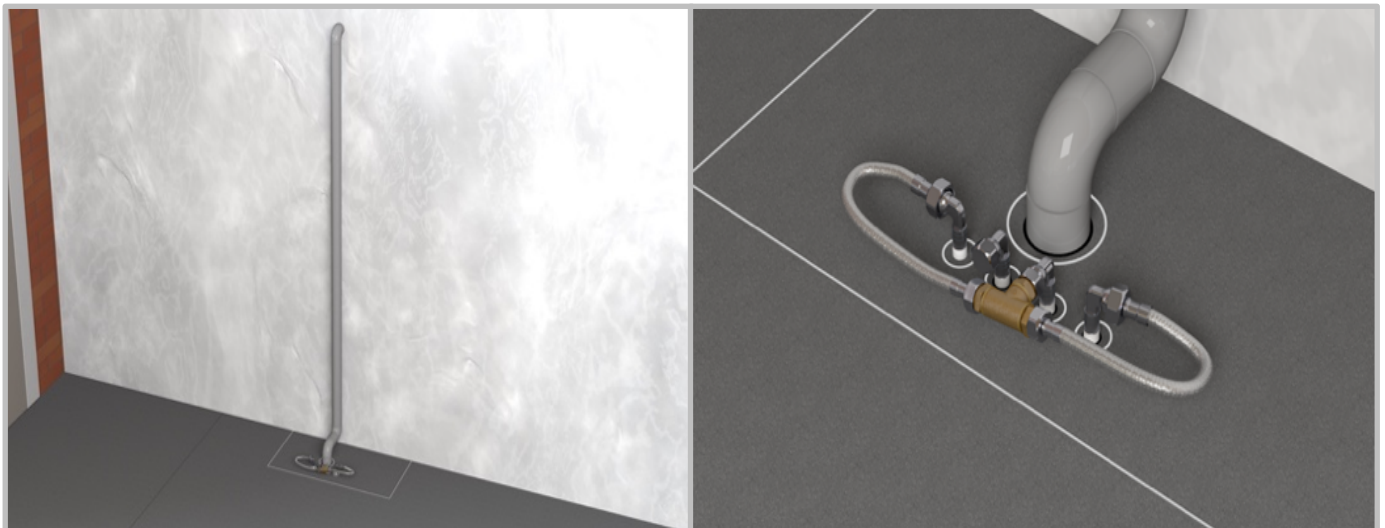


- Gravity flow greywater tubes size 75/50/40mm - 3"/2"/1 1/2" inch
- - - Pressure tube greywater from lift pump to Gravity greywater tube 32mm - 1 1/4" inch
- independent feeds recycled water to toilets, laundry machine & garden/pool
- - - 100 - 230 volt power from Hydraloo to lift from laundry machine

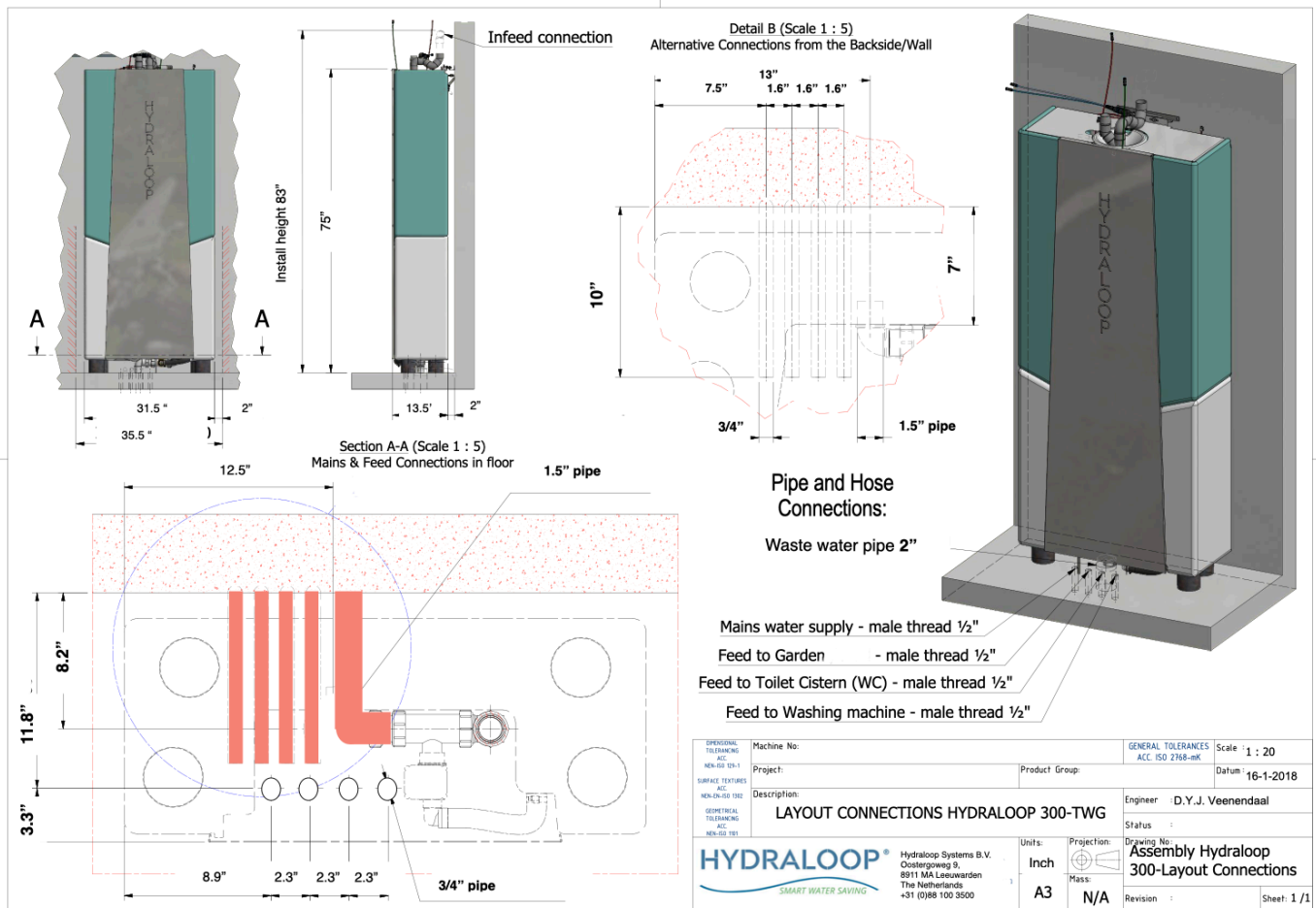
DAB Nova Box lifting station  
<https://www.dabpumps.com/en/lifting-stations/novabox>

**WATER SUPPLY UNTIL INSTALLATION OF HYDRALOOP**

<b>OPERATION BEFORE INSTALLATION OF A WATER RECYCLING SYSTEM</b>	When your building is Recycle Ready, you can install a (temporary) bridge connection from the input pipes to the sewer. This enables you to use showers and baths as usual, until a water recycling system like Hydraloo is installed.
--	--



## DIMENSIONS



## HYDRALOOP 300 SPECIFICATIONS

<b>CAPACITY</b>	300 liters   80 gallons
<b>FAMILY HOME</b>	Up to 5 persons
<b>TREATMENT CAPACITY</b>	530 liters   140 gallons per day
<b>DIMENSIONS</b>	80 cm wide, 34 cm deep, 187 cm high   31 1/2" wide, 13'4" deep, 74" high
<b>VOLTAGE</b>	100/230 Volt, 24 Volt internal
<b>POWER CONSUMPTION</b>	20 watts during treatment. On average: 200 kWh/year per system
<b>AVERAGE RECYCLED WATER QUALITY</b>	non-potable water CBOD5 (mg/L) < 10 TSS (mg/L) < 10 Turbidity (NTU) < 5 E. coli (MPN/100ml.) < 14 PH (SU) 6.0 – 9.0
<b>NOISE LEVEL</b>	± 44 dB

## HYDRALOOP QUALIFIED LIFT PUMPS

<b>DAB NOVABOX 30/300</b>	This lift pump is for installation in the crawl space underneath the floor 60.7 cm wide, 30.9 cm deep, 36 cm high   23.9" wide, 12.2" deep, 14.1" high
<b>DAB GENIX VT030</b>	This lift pump is placed on or partly in the floor. 45.6 cm wide, 17.8 deep, 34.6 cm high   18" wide, 7" deep, 13.6" high
<b>CONNECTION PIPES</b>	Make sure the pressure tube from the lift pump is 32 mm   1.26" to avoid excessive flow of water entering the Hydraloop system.

**VIDEO SUPPORT**

Click any blue field to watch an instructional video that suits your individual situation.

# PREPARE PLUMBING



Hydraloop products are stylish, so you do not have to hide the Hydraloop unit. Installation in house or building is easy, just as easy as installing other white good appliances. The space needed of one Hydraloop unit is only 0,25 square meter / 3 square feet.

Preparing the plumbing for a Hydraloop system is easy in new built projects and as part of a renovation. It's also very well possible to install Hydraloop product in existing homes or buildings; ease is depending on the specific situation.

**Hydraloop Home**

Please select your situation below, to view how to prepare the plumbing:

There are two options for installing the water connections to and from the Hydraloop

concealed plumbing

visible mounted plumbing

Additional technical drawings are available on request

Contact us about your home

1-storey house or apartment

2-storey house with bathroom(s) on 1st floor

2-storey house with bathroom(s) on ground and 1st floor

3-storey house with multiple bathrooms

**ADDITIONAL INFORMATION**

Please visit our website at [www.hydraloop.com/technical](http://www.hydraloop.com/technical), or mail your questions and/or technical drawings to [recycleready@hydraloop.com](mailto:recycleready@hydraloop.com). Our support team will be pleased to guide you through the process.

