



**P/N: BHS570 - 8HP70 8 Speed Automatic Transmission
GEN3 Hemi Swap Transmission Adapter
1970-1974 E-Body Mopar with Stock (Non-Hemi) V8 K- Member**



Installation Instructions

Thank you for choosing to use HOOKER™ engine swap mounting brackets as part of your GEN3 HEMI Swap project. These mounting brackets are part of the most comprehensively engineered system of mounting components, headers and exhaust systems available for this application. Please read these instructions thoroughly before attempting installation.

IMPORTANT: Requires Hooker Blackheart Engine Mounting Brackets **P/N BHS566**, 2-bolt Chevy Transmission Mount **P/N 71223029HKR**, and Transmission Crossmember **P/N: BHS567**.

Will not work with 8HP90 (Heavy Duty) 8 Speed Automatic.

Visit www.holley.com for a complete selection of Transmission Crossmember, Headers, Exhaust, and more GEN3 HEMI support products to complete your E-Body Hemi Swap.

COMPATIBILITY INFORMATION:

70-74 E-Body Mopar cars using GEN3 HEMI engines, installing the following transmission and using the listed supporting parts:

8HP70 (8 SPEED AUTOMATIC): Crossmember P/N: BHS567, Transmission Mount P/N: 71223029HKR, & Engine Mounting Brackets P/N: BHS566

Install Notes: Some transmission tunnel massaging will be required – minor trimming of unused- nonstructural casting flash and tabs will be required to the transmission case. Shifter cable bracket may need to be fabricated - output flange adapter and custom drive shaft are required.

PARTS LIST:

Qty.	Description
1	Transmission Adapter Plate

ACCESSORY PACK CONTENTS:

4		M10 x 1.25 x 25mm Flange Bolts
2		7/16-14 x 1" Flange Bolt
2		7/16-14 Flange Nut
2	599R94	Decal – Blackheart 2" x 4"
1	199R12168	Instruction Sheet

Check the hardware package. If anything is missing, please contact Technical Service at 1-866-464-6553 or 270-781-9741.

TOOLS NEEDED:

3/8" Drive Socket Set
3/8" Drive Metric Socket Set
11/16 Wrench
5/8 Wrench

INSTALLATION:

These instructions assume the engine and transmission are installed.

1. Install the Hooker Blackheart Transmission Adapter Plate on to the transmission tail shaft using the (x4) supplied M10 x 25mm bolts. Tighten the bolts. **Note: Torque M10 bolts to approximately 30 ft. lbs Do Not over tighten.**
2. Install the transmission mount to the transmission adapter plate with the (x2) 7/16 x 1" bolts and nuts supplied in the adapter plate kit.

NOTE: The transmission mount will be installed between the adapter plate and the **BHS567** transmission crossmember. **Fig.1**

3. Install the **BHS567** (SOLD SEPARATELY) crossmember and align the studs of the transmission mount while raising the transmission crossmember into position. Align the bolt holes and install the provided 3/8-16 x 3.5" bolts with washers. Install the provided flange nuts and tighten. Align the transmission to center. Install the nuts onto the transmission mounts and tighten.

Shown with 8HP70 Transmission Installed

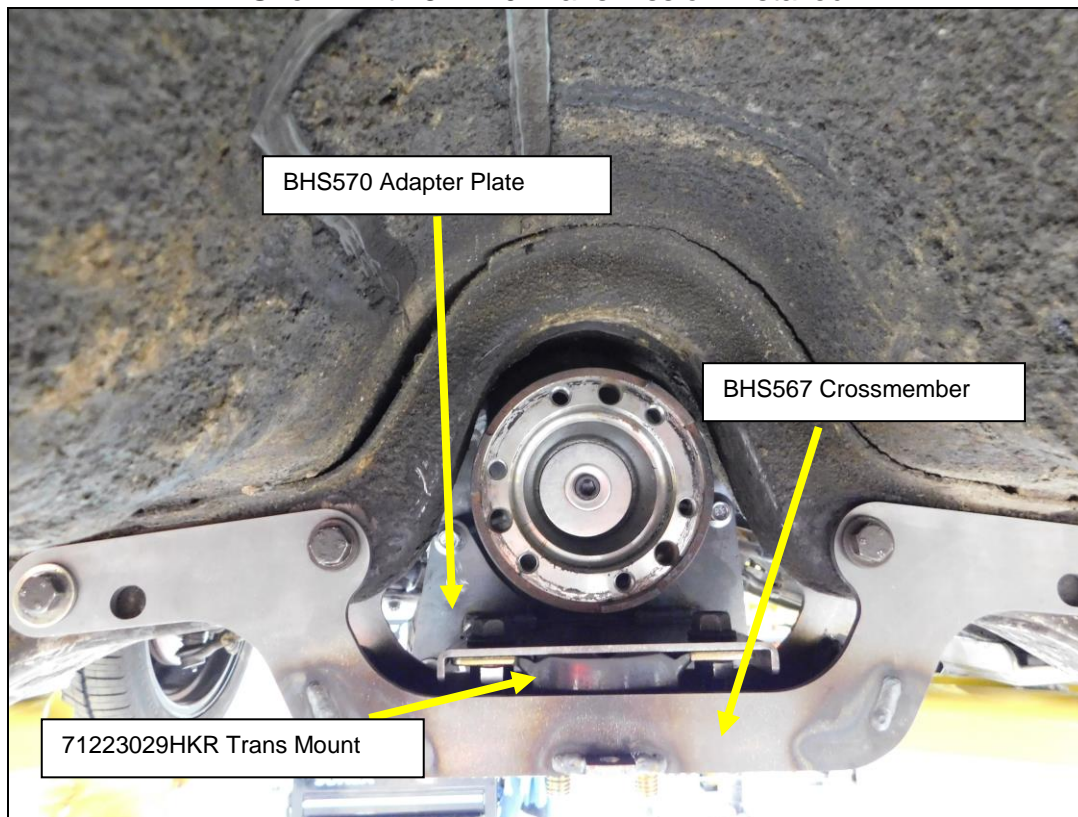


Figure 1

Any questions? Please contact Technical Service: 1-866-464-6553 or 270-781-9741. For online help, please refer to: www.holley.com.

© 2021 Hooker Headers, Inc. All rights reserved. Tous Droits Réservés

199R12168

Date: 2-23-21