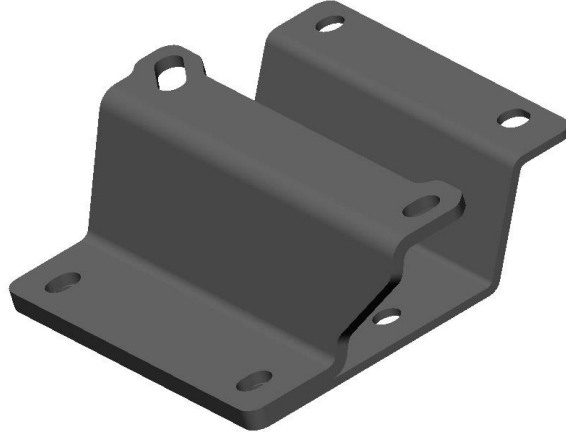




1997-2006 Jeep Wrangler 545RFE Transmission Mount Bracket BHS521 Installation Instructions



Thank you for choosing to use Hooker Blackheart products on your 1997-2006 Jeep Wrangler Gen 3 Hemi engine swap project. This bracket is part of the most comprehensively designed engine swap system available for installing a Chrysler Gen 3 Hemi engine in to this vehicle application.

PRE-INSTALLATION CONSIDERATIONS:

This bracket has been designed to help facilitate the installation of a Chrysler Gen 3 Hemi engine and Dodge/Ram 1500 545RFE transmission and transfer case adapter into a 1997-2006 Jeep Wrangler that is using Hooker Blackheart Hemi engine mounting brackets and the stock Jeep skid plate as its mounting foundation. This mount bracket is designed to be used with the stock Jeep transmission mount.

COMPATIBILITY INFORMATION:

This bracket is bolt-in compatible with the stock 1997-2002 Jeep Wrangler skid plate as-shipped; compatibility with the stock 2003-2006 Jeep Wrangler skid plate can be provided for by using 1-inch tall spacers (user-supplied) between this bracket and the stock Jeep Wrangler transmission mount.

BEFORE BEGINNING:

Check that the hardware package includes the following:

(x8) M10 x 1.5 x 25mm bolts & (x4) M10 x 1.5 lock nuts

INSTALLATION:

These instructions have been written under the assumption that you have already installed a Gen 3 Hemi engine and 545RFE transmission into your vehicle using Hooker Blackheart Hemi engine swap mounting brackets.

1997-2002 Jeep Wrangler applications-

1. Attach the supplied bracket to the bottom of the Dodge/Ram 1500 4WD 545RFE transmission transfer case adapter with four of the supplied bolts.
2. Attach a stock 1997-2006 Jeep Wrangler transmission mount to the bottom of the bracket with the remaining supplied bolts and nuts.
3. Attach the stock skid plate to the bottom of the mount and then raise the skid plate/transmission assembly up and attach it to the bottom of the frame rails with the stock skid plate fasteners.

2003-2006 Jeep Wrangler applications-

1. Follow the same instructions as for the 1997-2002 application, except install 4 round 1" tall spacers between the bottom of this bracket and the stock Jeep Wrangler transmission mount and fasten the mount to the bracket with 1" longer bolts than those supplied in the hardware pack for this bracket.

LIMITATION OF LIABILITY – DISCLAIMER:

HOOKER™ makes no warranties of merchantability, of fitness for particular purpose, or that its products are approved for general use, or that its products comply with laws, regulations, or ordinances in the state where they may be sold to the ultimate purchaser, the consumer.

Unless expressly stated to the contrary in the catalog, instruction sheet; or price list, the entire risk as to the conformity of any company product in any such state and as to repair should the product prove to be defective or non-conforming, is on the retail purchaser, the buyer, the ultimate consumer, of such product and it is not upon the seller, distributor, or manufacturer.

In this connection, the retail purchaser, the buyer, the ultimate consumer assumes the burden of the entire cost of any and all necessary service, alterations, or repair.

© 2020 Hooker Headers, Inc. All rights reserved. Tous Droits Réservés.

199R11977

Date: 1-22-20