



### Installation Instructions

## 817837

### 2018-21 JEEP WRANGLER JL 2.0L TURBO & 3.6L ENGINE

2-Door & 4-Door  
Muffler Delete

#### OVERVIEW:

1. Take a moment to read and understand these instructions before installing your Flowmaster performance system.

**NOTE:** Please inventory all parts now before continuing and if necessary, report any missing items to our tech line. This will avoid potentially stranding your vehicle until any missing replacement parts arrive.

ITM #	PART #	DESCRIPTION	QTY.
1	86499S	Rock Crawler Tailpipe	1
N/A	PK907	Hardware Package includes:	1
2	MC250BS	2½" Stainless Band Clamp	1
3	HW502	7/16" Hanger Keeper	1

#### PREPARE VEHICLE FOR KIT INSTALLATION:

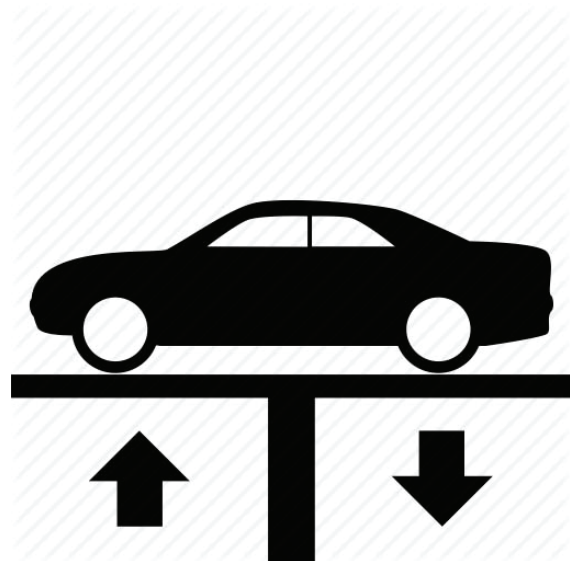
2. Raise vehicle up on a hoist or rack to working height. If you don't have access to a hoist or rack, support vehicle with jack stands.

**WARNING:**

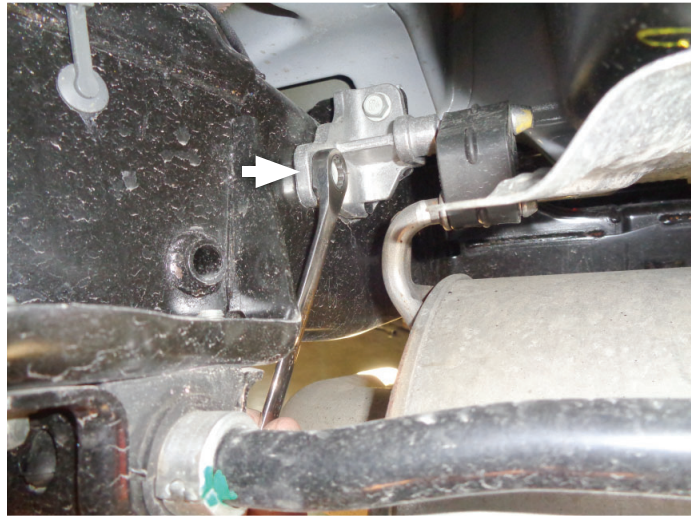
Avoid serious burns! Allow your vehicle time to cool completely before touching any factory engine components.

**To ease preparation and installation of your new kit:**

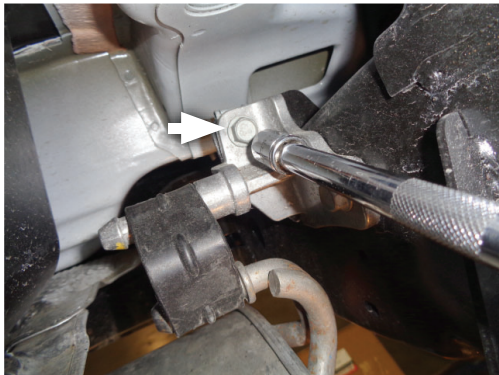
- Apply penetrating lubricant to mounts, bolts and clamps before you remove them.
- Use stands as necessary to support parts as you detach them from your vehicle and again as you install new parts.



3. Loosen clamp at muffler inlet connection above rear axle. Remove lower bolt from left and right rear mounts.



4. Remove upper bolt from left and right rear mounts, disassemble hangers from isolators and remove muffler from inlet pipe. Transfer driver side hanger mount onto new tailpipe.



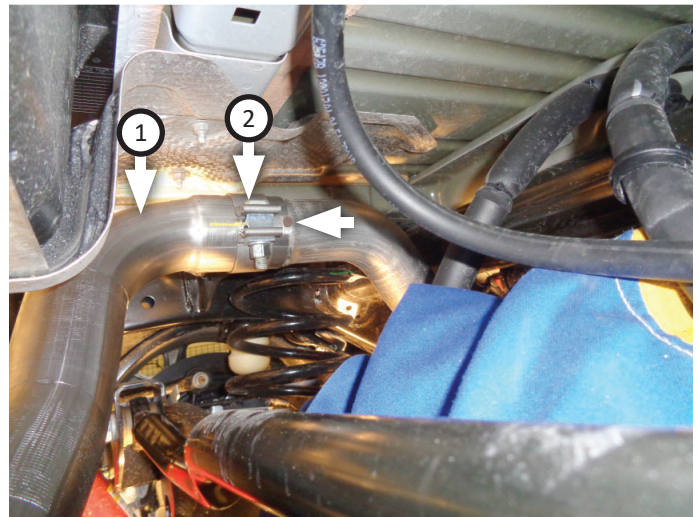
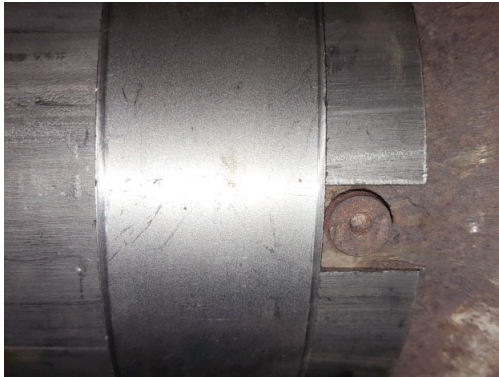
## INSTALL FLOWMASTER EXHAUST SYSTEM

5. Remove nuts from stock and Flowmaster clamps, apply anti-seize compound to bolts and re-install nuts.

**NOTE:** The image in this step is intended for illustrative purposes only and may or may not accurately reflect components included in your kit.



6. Place **clamp (2)** onto **tailpipe (1)** and connect it to factory over-axle pipe. Line inlet pipe notch up to over-axle pipe tab but don't cover notch. Tighten clamp just enough to allow for further adjustment.



7. Fasten hanger mount back into position on frame with factory bolts and tighten securely.
8. Adjust exhaust components for fit; maintaining  $\frac{1}{2}$ " clearance and compensating for suspension, travel and vibration then tighten clamp.
9. Secure exhaust system by installing **hanger keeper (3)** onto wire hanger.
10. Recommended: Secure slip-fit connections with a 1-inch tack weld then spray high-temp paint over each weld to prevent rust and premature corrosion.



Congratulations, the installation of your FLOWMASTER performance exhaust system is now complete!





Installation Diagram  
**817837**  
**2018-21 JEEP WRANGLER JL**  
**2.0L TURBO & 3.6L ENGINE**  
2-Door & 4-Door  
Muffler Delete

