



OUTLAW S E R I E S

Installation Instructions
817696
2004-08 FORD F-150
4.6L, 5.4L V8 ENGINE
2/4 WD & All Wheelbases

OVERVIEW:

1. Take a moment to read and understand these instructions before installing your Flowmaster performance system.

NOTE: Please inventory all parts now and if necessary, report any missing items to our tech line. This can avoid potentially stranding your vehicle until replacement parts arrive.

ITM #	PART #	DESCRIPTION	QTY.
9	ST462B	Tips	2
N/A	PK775	Hardware Package includes:	1
10	482HA	Front Clamp Hanger	1
11	211HA	Frame Hanger	1
12	HA168	Rubber Hanger	1
13	MC300BS	3" Stainless Band Clamp	6
14	MC250BS	2½" Stainless Band Clamp	1
15	HW503	½" Hanger Keeper	1
16	HW502	¾" Hanger Keeper	1
17	HW205	⅝" x 1¼" Bolt	1
18	HW102	⅝" Nut	1
19	HW302	⅝" Flat Washer	2
20	HW308	⅝" Lock Washer	1

ITM #	PART #	DESCRIPTION	QTY.
1	26455S	Inlet Pipe	1
2	26206S	Extension Pipe	1
3	8430155-Z	Muffler	1
4	26456S	Left Front Tailpipe	1
5	26458S	Left Rear Tailpipe	1
6	26457S	Right Tailpipe	1
7	26459S	Side Exit Pipe	2
8	26460S	Rear Exit Pipe	2

REMOVE STOCK EXHAUST SYSTEM:

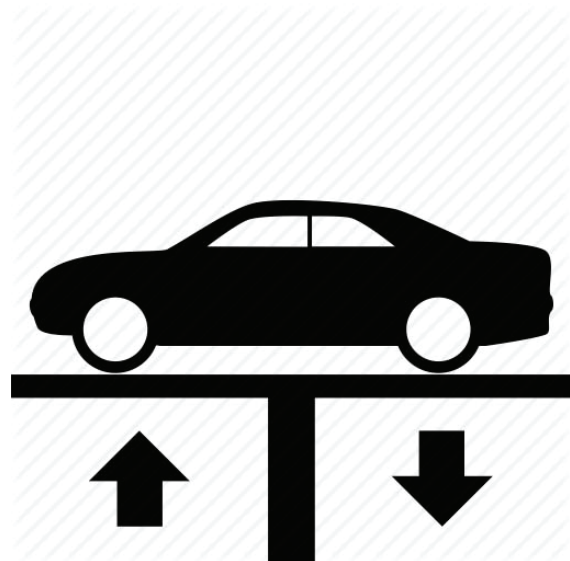
2. Raise vehicle up on a hoist or rack to working height. If you don't have access to a hoist or rack, support vehicle with jack stands.

WARNING:

Avoid serious burns! Allow your vehicle time to cool completely before touching any factory engine components.

To ease preparation and installation of your new kit:

- Apply penetrating lubricant to mounts, bolts and clamps before you remove them.
- Use stands as necessary to support parts as you detach them from your vehicle and again as you install new parts.



- Cut tailpipe at muffler exit. Disassemble hanger wires from isolators and remove tailpipe section from vehicle.



- Support muffler and disassemble wire hangers from isolators. Loosen clamp, disconnect inlet pipe at catalytic converter and remove exhaust system.



INSTALL FLOWMASTER EXHAUST SYSTEM:

- Remove nuts from stock and Flowmaster clamps, apply anti-seize compound to bolts and re-install nuts.

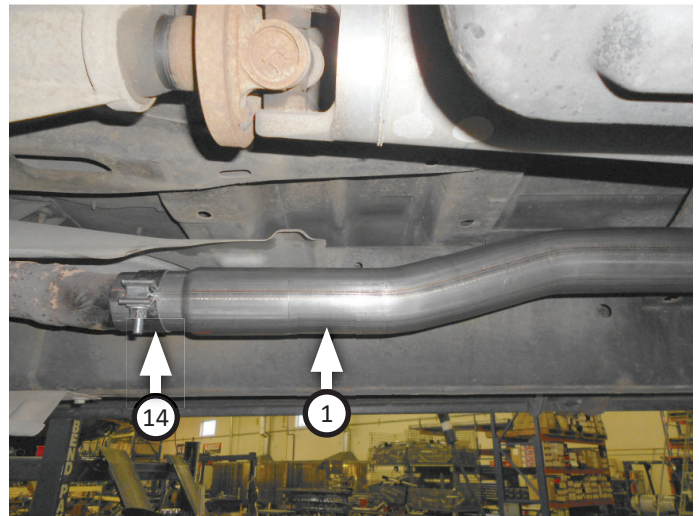
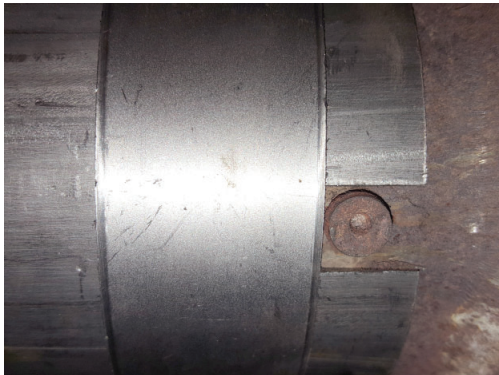
NOTE: The image in this step is intended for illustrative purposes only and may or may not accurately reflect components included in your kit.



6. If your vehicle falls within the specifications listed below, apply the corresponding modifications or assembly combinations to this kit to ensure it will install properly.

WHEEL BASE	BODY STYLE	BED LENGTH	INLET ASSY:	MODIFICATION
126"	Regular Cab	6'5	Inlet Pipe only	Trim 18½" from rear of inlet pipe
145"	Regular Cab	8'	Inlet Pipe only	None
133"	SuperCab	5'5	Inlet Pipe only	Trim 12" from rear of inlet pipe
145"	SuperCab	6'5	Inlet Pipe only	None
163"	SuperCab	8'	Inlet+Extension	None
139"	SuperCrew	5'5	Inlet Pipe only	Trim 6" from rear of inlet pipe
151"	SuperCrew	6'5	Inlet+Extension	Trim 12" from rear of extension pipe

7. Place **clamp (14)** onto **inlet pipe (1)** then connect it to head pipe, aligning tab on head pipe to notch on inlet pipe, and tighten clamp enough to allow for adjustment.



NOTE: For regular cab, 6'5 bed vehicle owners, skip step 8.

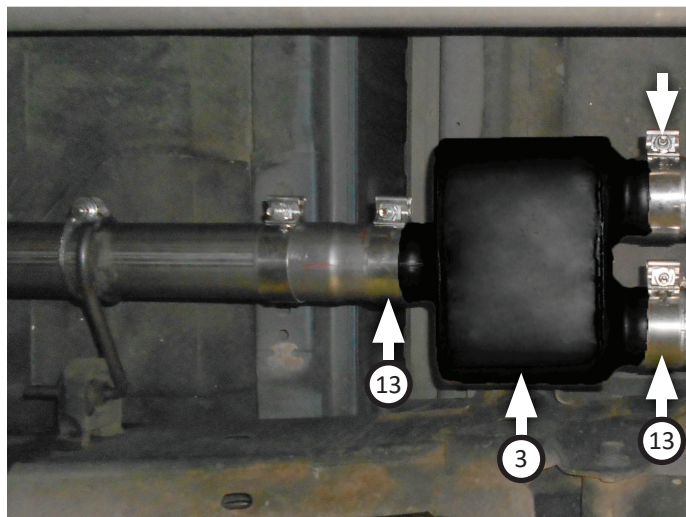
8. Slide **front clamp hanger (10)** onto back of inlet pipe and insert wire hanger into isolator. Tighten clamp enough to allow for later adjustment. If necessary, install **extension pipe (2)** now.

NOTE: For the following applications follow step 9- Super Cab with 6'5 or 8' Bed, Super Crew

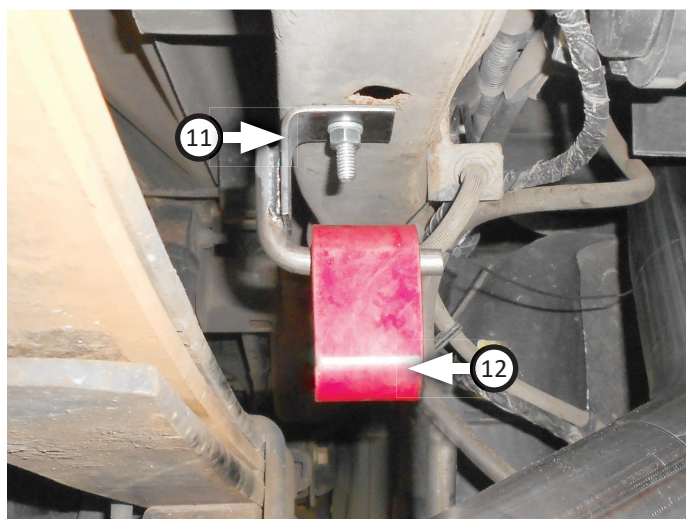
9. The isolator is bolted to side of frame and must be relocated forward to cross brace where you will find another factory mounting location.



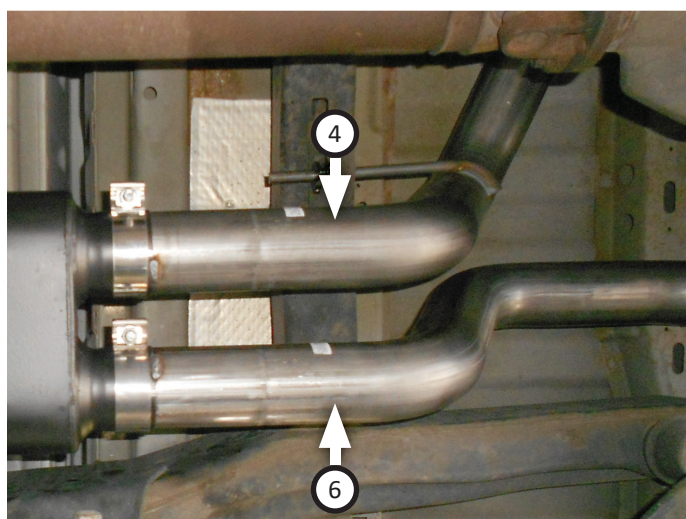
10. Place **clamp (13)** onto **muffler (3)** then connect it to inlet or extension pipe. Tighten clamp just enough to allow for adjustment then place (x2) **clamps (13)** onto muffler outlets.



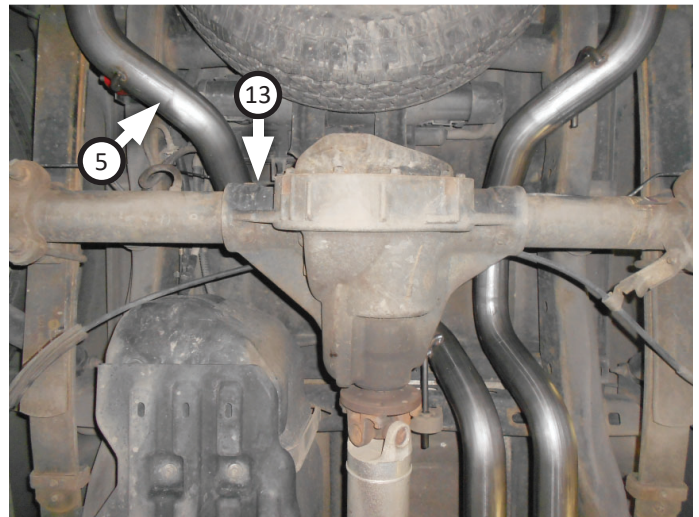
11. Fasten **frame hanger (11)** to drivers side bottom of frame (next to spare tire) using **bolt (17)**, (x2) **flat washers (19)**, **lock washer (20)** and **nut (18)** as shown. Then hang **rubber hanger (12)** on frame hanger end.



12. Route **left front (4)** and **right tailpipes (6)** over axle then connect them to muffler. Insert their wire hangers into isolators then tighten clamps just enough to allow for adjustment.



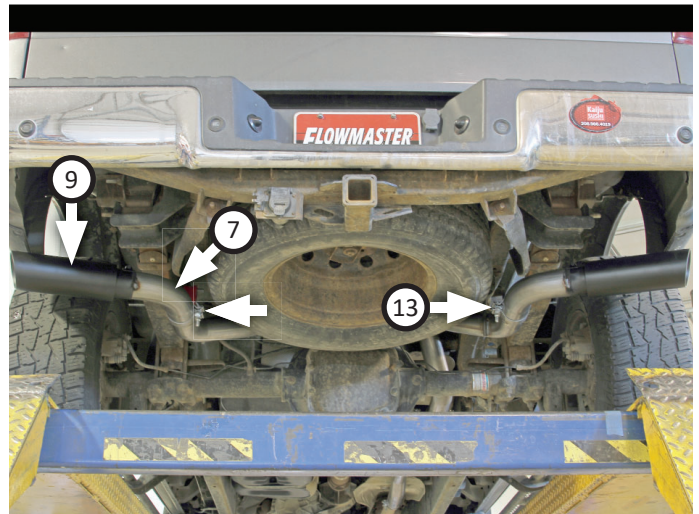
13. Place **clamp (13)** onto **left rear tailpipe (5)** then connect it to left front tailpipe. Insert wire hanger into rubber hanger then tighten clamp just enough to allow for later adjustment.



14. Place (x2 ea.) **clamps (13)** onto **side exit pipes (7)** then connect them to tailpipes and tighten clamps just enough to allow for later adjustment.

NOTE: This kit includes both side and rear exit pipes. A side exit is preferable for towing purposes, to avoid blowing fumes in or on vehicles you may be towing (eg: RV trailer, boat, etc). Otherwise, use **rear exit pipes (8)** in place of side exit pipes.

15. Place (x2) **tips (9)** onto side exit pipes and tighten inlets. Rotate exit pipes and tips to desired distance from body or bumper, so angle cut on tips are properly positioned.



16. Adjust exhaust components for fit; maintaining $\frac{1}{2}$ " clearance and compensating for suspension, travel and vibration, then tighten all clamps. Finally, fit $\frac{1}{2}$ " (15) and $\frac{3}{8}$ " (16) **hanger keepers** onto each sideways hanger.
17. Recommended: Secure slip-fit connections with a 1-inch tack weld then spray high-temp paint over each weld to prevent rust and premature corrosion.

Congratulations, the installation of your FLOWMASTER performance exhaust system is now complete!





OUTLAW

S E R I E S

Installation Diagram
817696
2004-08 FORD F-150
4.6L, 5.4L V8 ENGINE
2/4 WD & All Wheelbases

