



Installation Instructions:

717781

2009-20 NISSAN 370Z

3.7L ENGINE

Coupes & Convertibles

Does NOT fit cars with Factory Performance Option (Quad Tips)

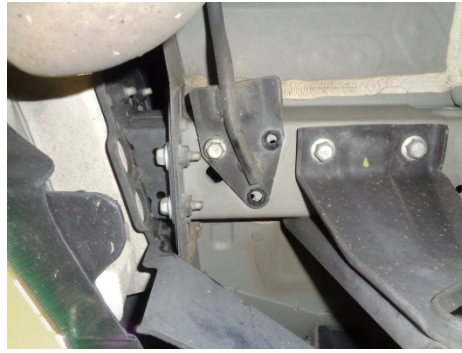
1. Raise the vehicle up on a hoist or rack to working height. Spray a penetrating lubricant onto the four flange bolts behind the catalytic converters and the two at the back of the Y-pipe in the center of the vehicle. Also spray the rubber hanger mounts that support the system. This will greatly ease removal of the factory system.



2. Remove the nuts at the two flanged connections behind the catalytic converters, then remove the nuts at the flanged connection in the center of the vehicle. Slide the Y-pipe rearward to disengage the front two flanges, then lower the front of the Y-pipe and disengage the center connection. Lower from the vehicle and set aside. Save the front two gaskets for reuse.



3. Support the rear muffler with a stand; disengage the two middle hangers and the hanger at the front left corner of the muffler from the rubber mounts on the vehicle.



4. At the rear of the muffler, remove the three bolts securing the two rearmost hangers to the frame of the vehicle. Lower the stand and slide the system down and to the rear to remove from the vehicle.



5. Place the left inlet pipe **#86424M** into position behind the left catalytic converter and re-install the nuts removed in step 2 above. Tighten enough to hold but still allow for adjustment. Be sure to replace the gasket. Repeat the step on the right side of the vehicle with inlet pipe **#86423M**. Measure and make a mark at 1-3/4" from the back of each of the front pipes, this is the mark that the X-pipe will be slid on to.



6. Place a supplied clamp onto both front pipes of X-pipe assembly **#86425M**. The embossed Flowmaster in the center of the X-pipe will face the ground and the top of the letters will be toward the front of the vehicle when installed. Position the X-pipe over the cross member and onto the front pipes, slide up to the marks at 1-3/4". Level the assembly and center in the driveline tunnel. Tighten the clamps enough to hold but still allow for adjustment. Place a provided clamp onto each X-pipe outlet.



7. Place the left intermediate pipe **#86426M** into position and slide into the back of the X-pipe, connecting the hanger on the pipe to the rubber mount on the vehicle. The hanger should be level and the rubber isolator should be vertical. Repeat the step on the right side of the vehicle with pipe **#86427M**. Tighten the clamps enough to hold but still allow for adjustment.



8. Place a provided clamp onto the inlets of muffler **7525554-470**. Place the muffler up into position and slide onto the intermediate pipes, make sure they are fully seated and support the muffler with a stand. Tighten the clamps enough to hold but still allow for adjustment. Place a provided clamp onto each muffler outlet. **NOTE:** The protective plastic wrap has been left on the muffler to protect the finish; **remove it prior to starting the vehicle.**



9. Place the new exit pipe assemblies **86430M** & **86431M** next to the factory muffler and swap the right and left rear hangers to the new exit pipes.



10. Place the left exit pipe **#86430M** into the left muffler outlet and re-install the factory hanger mount to the frame using the factory bolts, tighten securely. Adjust the tip to the desired position and tighten the clamp enough to hold, but still allow for adjustment. Repeat this step on the right side of the vehicle with exit pipe **#86431M**.



11. Adjust the position of all pipes and muffler to provide a satisfactory fit. This is a tight fitting system, so take your time and be patient, tightening and adjusting a little bit at a time. Be sure to maintain an adequate clearance around all parts of the system to avoid rattles or damage to heat sensitive components. Once you're happy with the fit, tighten all connections down securely. For a cleaner appearance and more secure installation, we highly recommend welding all slip-fit connections. Place the provided 7/16" hanger keepers onto the intermediate pipe hangers, slide up to the rubber mount, these will prevent the hanger from slipping out of the isolator.

PACKING LIST		
Qty.	Description	Part #
1	Inlet Pipe, Right	86423M
1	Inlet Pipe, Left	86424M
1	X-Pipe Assembly	86425M
1	Intermediate Pipe, Left	86426M
1	Intermediate Pipe, Right	86427M
1	Muffler Assembly	7525554-470
1	Exit Pipe, Left	86430M
1	Exit Pipe, Right	86431M
1	PARTS KIT (includes the following)	PK893
8	• 2-1/2" Band Clamp	MC250BS
2	• 7/16" Hanger Keeper	HW502

