



**RockJock® Professional OffRoad Products presents:**  
**TJ/LJ Rear Trac Bars & Trac Bar Brackets**  
**Installation Instructions**

**Fits**

**Fits:** Rear of 1997- 2006 Jeep TJ Wrangler and LJ Unlimited

**Adjustable TJ/LJ Rear Trac Bar Components**

CE-9120R	TJ/LJ Johnny Joint Rear Trac Bar - for Currie housings & trac brackets
CE-9120RS	TJ/LJ Johnny Joint Rear Trac Bar - for stock housings & aftermarket brackets
CE-9121N	TJ/LJ Trac Bar Relocator Bracket – new Currie angled style bracket
CE-9121	TJ/LJ Trac Bar Relocator Bracket – standard style bracket
CE-9123N	CE-9120R TJ/LJ Johnny Joint Rear Trac Arm - w/ CE-9121N Currie angled trac bar bracket kit
CE-9123	CE-9120RS TJ/LJ Johnny Joint Rear Trac Arm - w/ CE-9121 standard housing bracket kit
CE-9120RBB	TJ/LJ Factory Rear Trac Bar Bracket Brace

**General Description**

We have several combinations of TJ/LJ rear trac bar upgrades. This instruction sheet will attempt to explain the components and their function so that you can make sure you have all of the correct components for your application.

Johnny Joint® adjustable rear trac bars are designed to replace the stock rear trac bars on '97-'06 Jeep Wrangler TJ and Unlimited models. The Johnny Joint trac bar allows you to center the rear axle assembly after installation of a lift kit and/or when springs settle. Made from 1 ¼" heavy wall 4130 chrome moly tubing and features greasable Johnny Joint rod ends on both ends.

**Trac Bar** offerings include:

The **CE-9120R** trac bar is designed to be used with new Currie rearend housings or the **CE-9121N** trac bar relocation bracket.

The **CE-9120R** trac bar and the **CE-9121N** trac bar bracket can be purchased together under part number **CE-9123N**.

The **CE-9120RS** trac bar is designed to be used with stock rearend housings or the **CE-9121** trac bar relocation bracket or other aftermarket trac bar brackets that are available on the market.

The **CE-9120RS** trac bar and the **CE-9121** trac bar bracket can be purchased together under part number **CE-9123**.

**Trac Bar Bracket** offerings include:

The **CE-9123N** Currie bracket with built in angle that tucks the bar up close to the rear axle for optimum gas tank clearance in a TJ. Generally used applications where vehicle has a high pinion angle and applications with high clearance or "belly-up" transfer case skid plates.

The **CE-9123** standard bracket tips the trac bar back toward the gas tank when pinion angle is adjusted upward and can be used in either a TJ or an LJ, however we recommend only using it in an LJ. Generally used in applications where there are no factors causing the vehicle to have extreme high pinion angle.

The **CE-9120RBB** bracket braces the factory trac bar housing bracket so that the extra load applied to the factory bracket by the relocation brackets does not crack or break the factory trac bar bracket.

**Instructions**

- 1) Remove the original trac bar by unbolting it at the housing first and then at the frame. Note: If you have a Currie rearend, a trac bar relocation bracket and a track bar bracket brace are not needed - the bracket on the Currie rearend accounts for all of this.
- 2) If you are using a stock housing, now would be the time to install the **CE-9120RBB** trac bar bracket brace (see photo on the next page). This bracket fits into the factory bracket in the same area that the factory bracket just came out of. Insert the bracket and it's supplied steel spacer into the factory bracket. Next, install the **CE-9121** or **CE-9121N** trac bar relocation bracket of your choice (see photo on the next page) over the top of the factory bracket and then install the supplied 1/2" bolt thru the new relocation bracket, through the stock bracket, through the spacer, through the brace bracket, out the back of the factory bracket and then put the nut and washer on the back side. NOTE: the **CE-9121** and **CE-9121N** trac bar brackets both come with tube spacers that you will insert in the old location of the stock trac bar. If you are using the **CE-9120RBB** brace bracket, it comes with it's own shorter spacer, so you will discard the spacer that comes with the trac bar bracket.
- 3) Finish the install of the new trac bar relocation bracket by snugging up the 1/2" bolt and then, using the bracket as a template, center punch and drill the balance of the holes and attach the bracket with the supplied hardware. (See attached supplemental instruction sheet for installation of **CE-9121N** bracket attached to this instruction sheet). Lastly, go back and clean the area of the axle housing tube around the



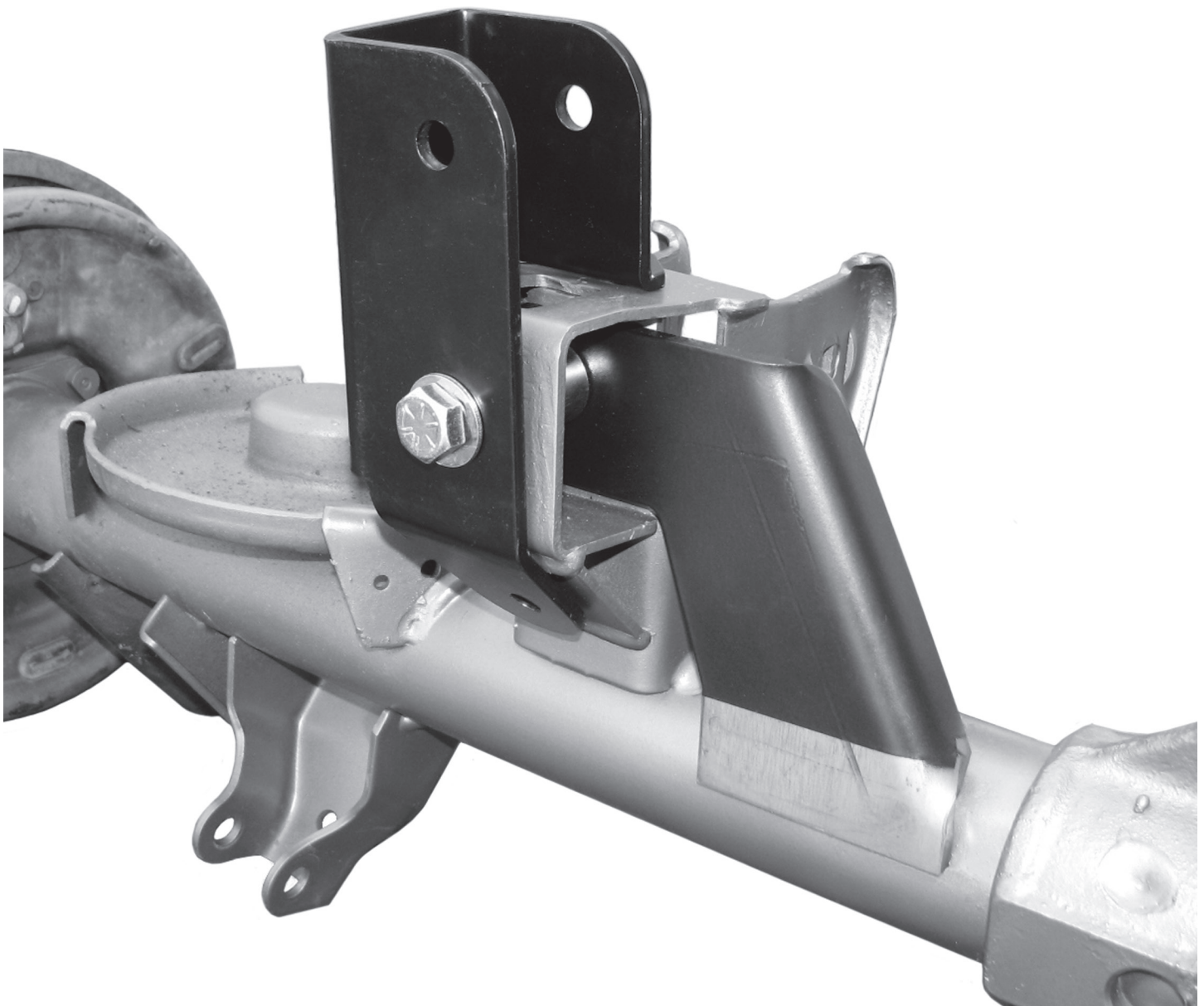
**Currie Enterprises / RockJock Professional Off Road Products**  
**382 N. Smith Ave., Corona, Ca. 92880**  
**Ph (714) 528-6957 - F (951) 549-0267**  
**www.rockjock4x4.com**



bare metal portion at the bottom of the **CE-9120RBB** bracket and weld the bottom of the bracket to the housing tube.

- 4) If you are using a Currie rearend, you will now be installing the **CE-9120R** trac bar. If you are using a stock rearend with a relocation bracket installed, you will now be installing the **CE-9120RS** trac bar. Before installing the trac bar, put anti-seize lube on the 1" threads of the adjustable end.
- 5) On the non-adjustable end of the trac bar, install the rubber washers over the flanges of the Johnny Joint® ball center on both sides of the Johnny Joint®. Install the non-adjustable end of the trac bar into the frame bracket using the stock bolt. Snug the bolt, but do not tighten.
- 6) Center the rear axle assembly under the Jeep by measuring from the side of the frame rail to a tread line in the center of your tire. Make sure you measure to the same place on both sides! You can center the axle by using a ratchet strap if necessary, or by pushing on the side of the Jeep.
- 7) Adjust the trac bar to fit the centered axle assembly. Install the adjustable end into the housing bracket or relocation bracket and install the greasable bolt through the hole. Snug the bolt, but do not tighten.
- 8) Remeasure your rear axle assembly to make sure it's centered. Readjust it if necessary.
- 9) Grease the Johnny Joint® rod ends before use with high moly lube grease. The correct grease will be charcoal in color. Do not use waterproof grease! We use a Chevron brand name grease specifically.  
Now go back and tighten and torque all of the bolts  
Mounting bolts at the frame and housing = 50 ft. lbs.  
Jam nut = as tight as you can get it! Loose jam nut threads will cause premature failure of the threads in the bar. Check the tightness of this nut periodically.
- 10) Confirm that the Johnny Joint® is straight and in a relatively neutral position, and that the bushing at the frame is straight and not in any kind of bind. If anything is misaligned readjust it and retighten it before use!

**NOTE: Check torque specs regularly!**



Currie Enterprises / RockJock Professional Off Road Products

382 N. Smith Ave., Corona, Ca. 92880

Ph (714) 528-6957 - F (951) 549-0267

[www.rockjock4x4.com](http://www.rockjock4x4.com)





RockJock® Professional OffRoad Products presents:

### CE-9121N Trac Bar Bracket

### Installation Instructions

#### Fits

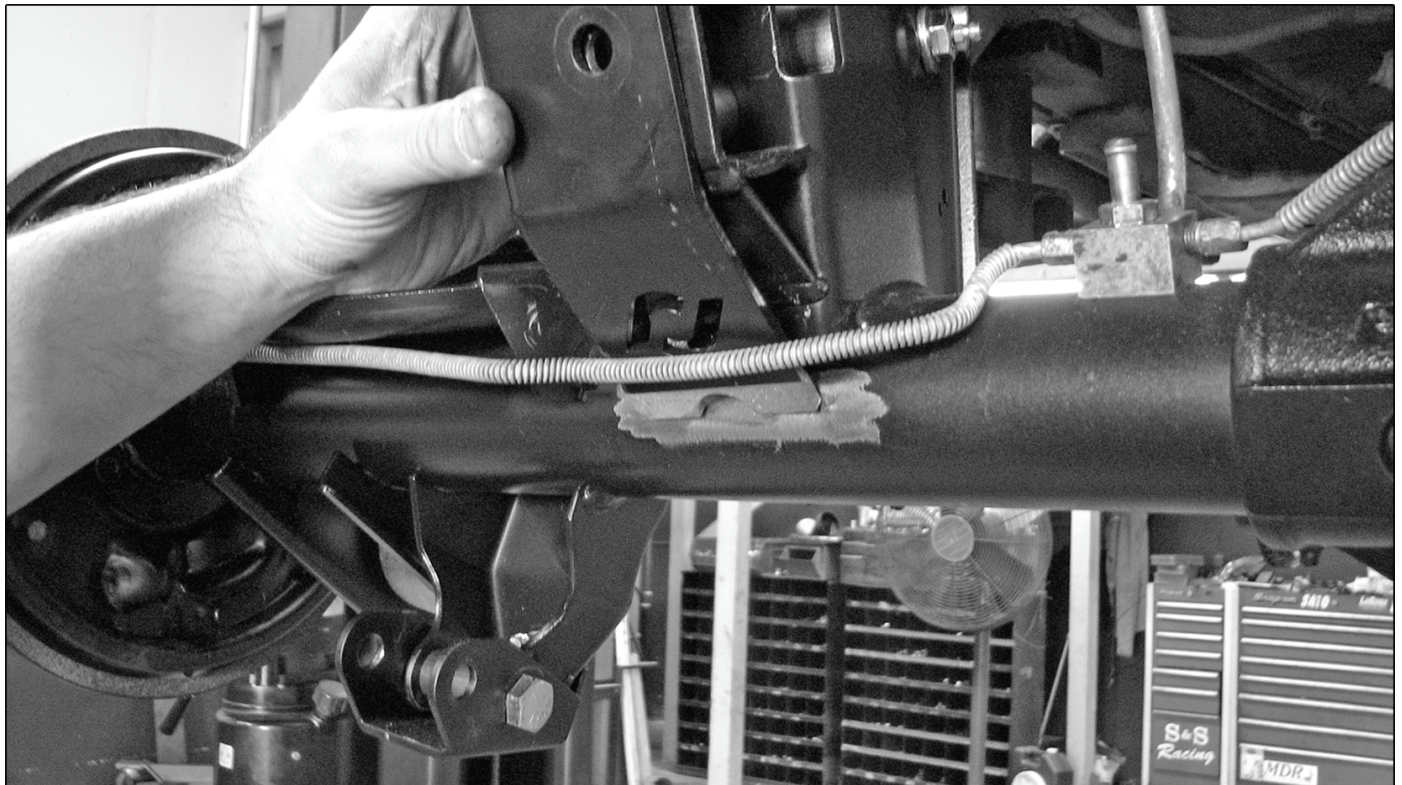
**Fits:** Front of 1997-2006 Jeep TJ Wrangler and LJ Unlimited

#### Kit Includes

- 1) Trac Bar Relocator Bracket
- 2) 1/2" stover nuts
- 1) 1" o.d. x 1/2" i.d. x 1 5/8" long spacer
- 3) 5/16" x 1" bolts
- 2) 1/2" x 3 1/4" bolt
- 6) 5/16" flat washers
- 9) 1/2" flat washers
- 3) 5/16" nylock nuts



#### Instructions



1) Position the new Currie trac bar bracket over the top of the stock trac bar bracket and then grind the paint off of your rearend housing's tube in the area that matches the new bracket's weld area.



Currie Enterprises / RockJock Professional Off Road Products

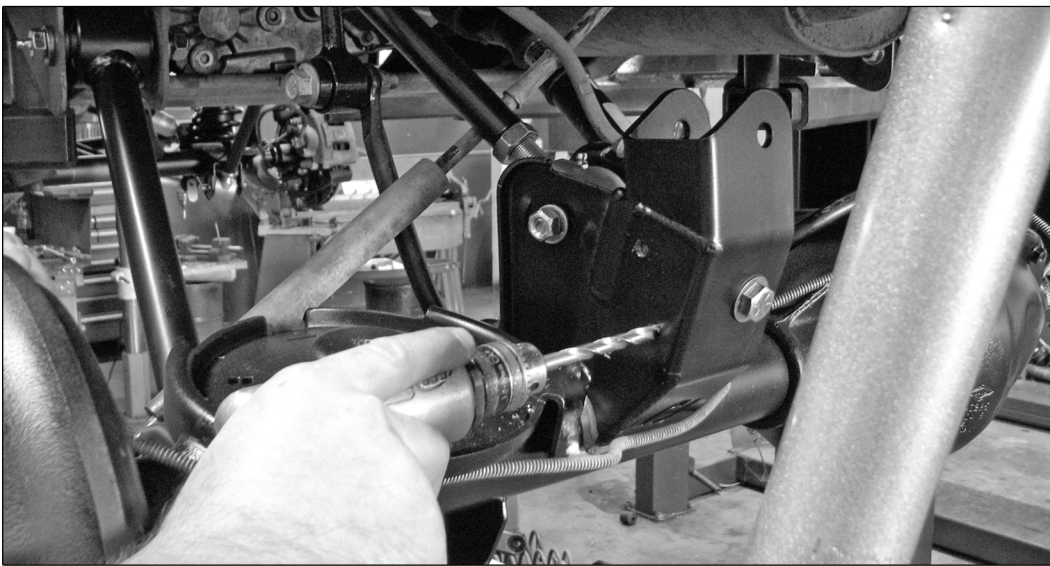
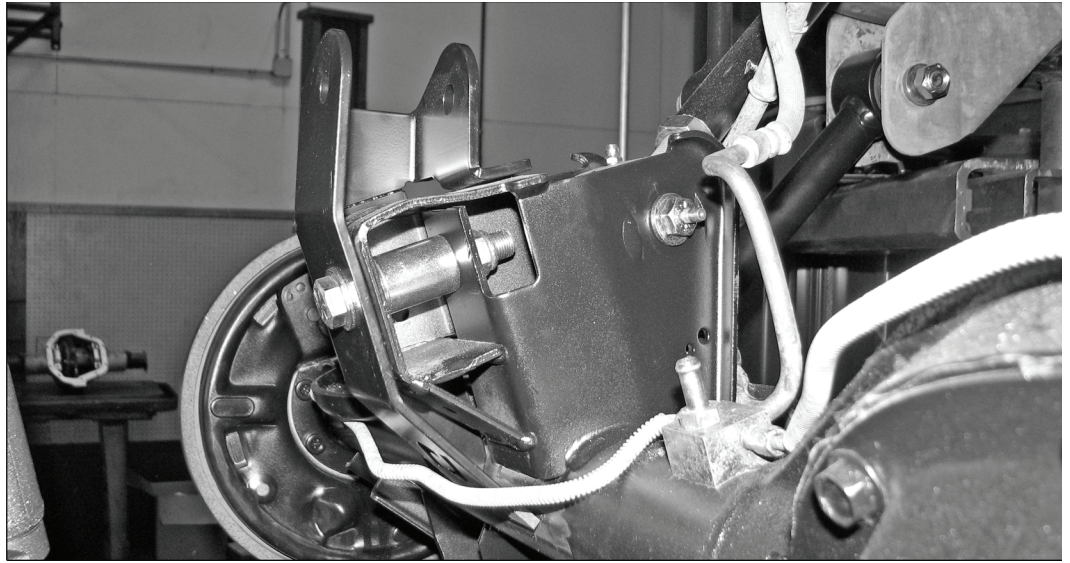
382 N. Smith Ave., Corona, Ca. 92880

Ph (714) 528-6957 - F (951) 549-0267

www.rockjock4x4.com

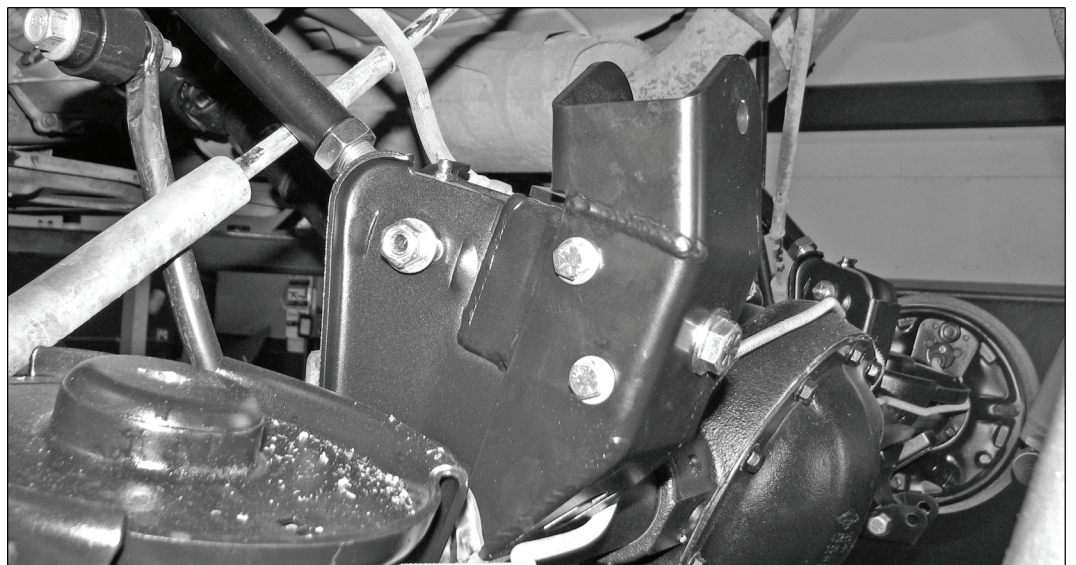


2) Insert the gold tube spacer in place of where the stock trac bar use to fit. Now insert the 1/2" x 3 1/4" bolt through the new bracket, through the original trac bar attaching bolt holes in the stock bracket and through the gold tube spacer. Use a flat washer on the bolt, and one under the stover nut. Torque to 90 ft. lbs.



3) Using the new bracket as a template, center punch and then drill the 2 side bolt holes through the stock bracket with a 5/16" drill bit.

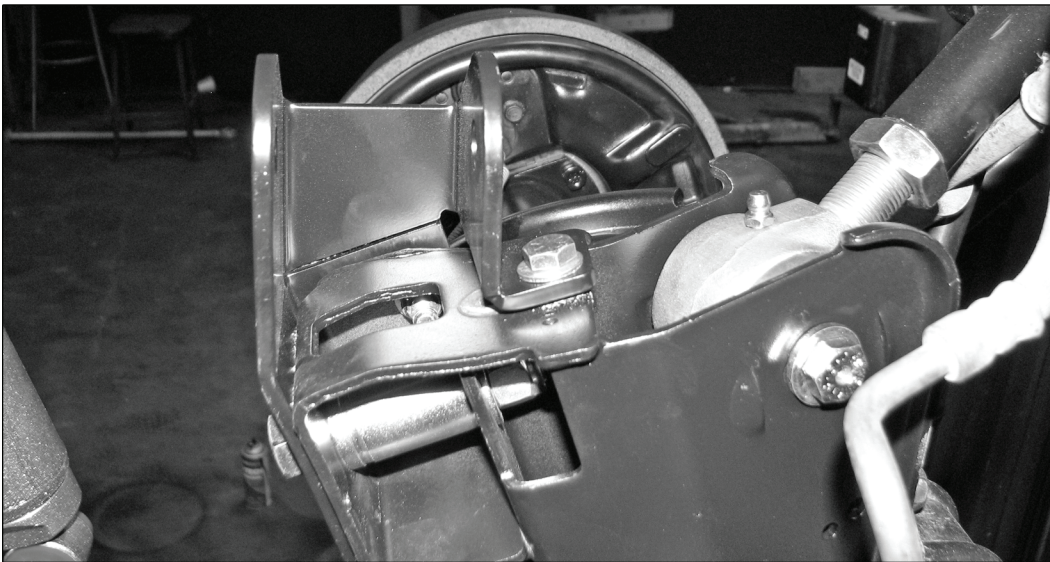
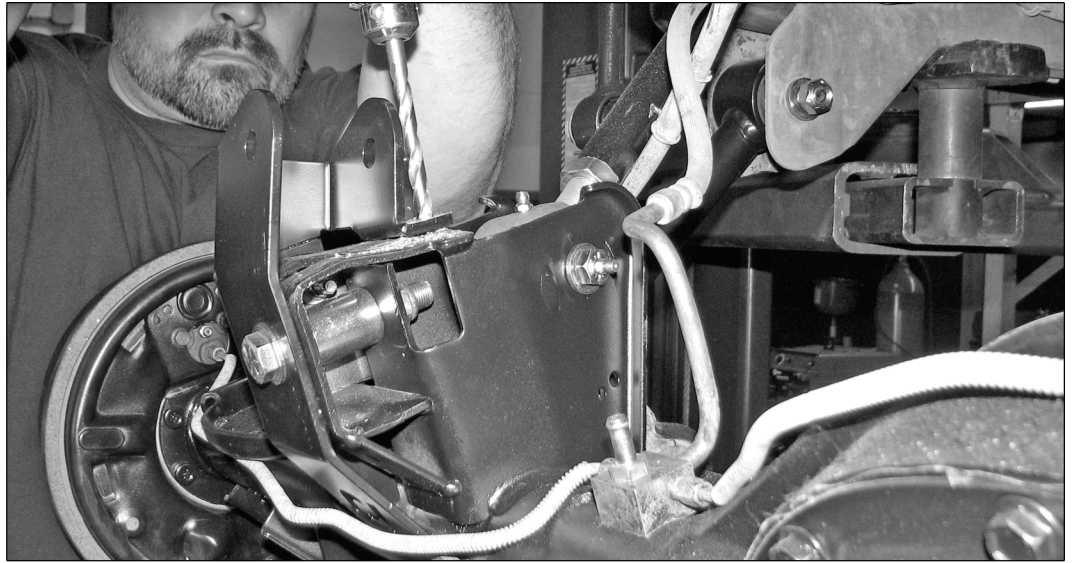
4) Insert the two 5/16" x 1" bolts through the new holes with a flat washer on each side. Insert the nylock nuts from the inside and torque to 30 ft. lbs.



Currie Enterprises / RockJock Professional Off Road Products  
382 N. Smith Ave., Corona, Ca. 92880  
Ph (714) 528-6957 - F (951) 549-0267  
[www.rockjock4x4.com](http://www.rockjock4x4.com)



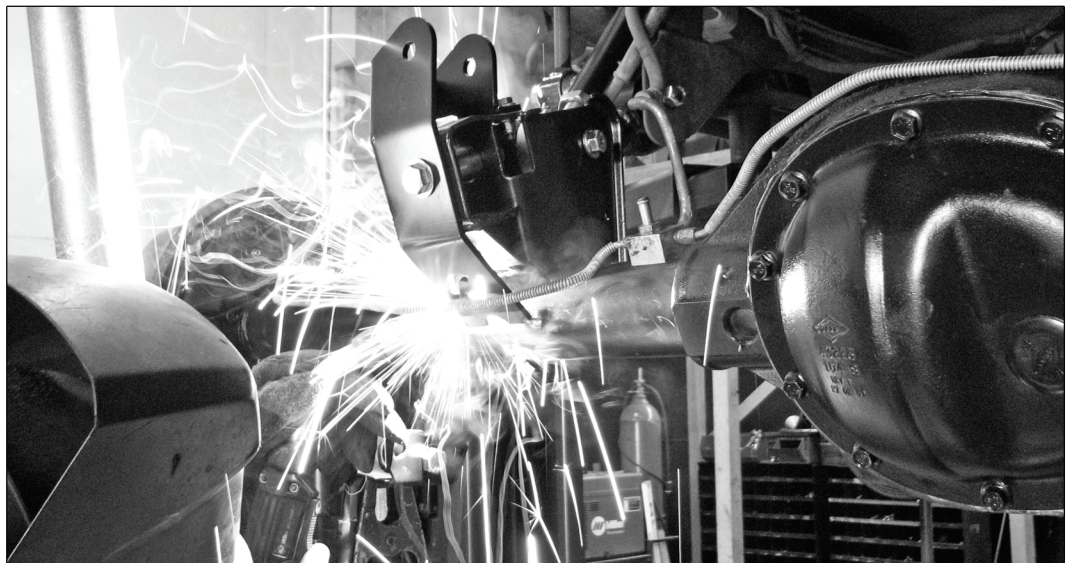
- 5) Using the new bracket as a template, center punch and then drill the top bolt hole through the stock bracket with a 5/16" drill bit.



- 6) Insert the 5/16" x 1" bolt through the new hole with a flat washer on each side. Insert the nylock nut from underneath and torque to 30 ft. lbs.

- 7) Lastly, go back and weld the 2 tabs on the bottom of the bracket to the axle tube. Make sure and cover your brake line to protect it from the welding!

NOTE: If you are using a stock trac bar you will use the extra 1/2" washers that are supplied as spacers to fill the extra gap for proper



Currie Enterprises / RockJock Professional Off Road Products  
382 N. Smith Ave., Corona, Ca. 92880  
Ph (714) 528-6957 - F (951) 549-0267  
[www.rockjock4x4.com](http://www.rockjock4x4.com)



See our website at [www.currieenterprises.com](http://www.currieenterprises.com) and order our catalogs:

Please send me the following Currie catalogs!

**ROCK JOCK®**

Jeep suspension kits and components

**CURRIE®**  
**ENTERPRISES**

Hi-performance street and race rearends

**CURRIE®**  
**4X4 REARENDS**

Bolt-in front and rearend axle units for 4WD vehicles

**CURRIE®**  
**CRATE REARENDS**

In stock, ready to ship, bolt-in units for common vehicles

Name:

Address:

City:

State: Zip:

Phone:

