

67-69 Camaro / Firebird Deck Lid Hinges

#875610 / #N875610 / #BLK875610

TOOLS NEEDED:

- Safety Glasses/Goggles
- 1/2" Socket and Socket Wrench
- 3/16" Allen Wrench
- 1/8" Drill Bit
- 25/64" Drill Bit
- Center Punch
- Die Grinder w/ Cylindrical Carbide Burr or Rotary File Head (1/4" dia or less)
- 1/4" I.D. x 5-3/8" long metal pipe (Can be found at most hardware stores)
- Loc-Tite #242 Blue Thread Locker
- Blue Painters Tape or equivalent for protecting painted surfaces
- Assistant for disassembly and installation/adjustment of deck lid

BEFORE INSTALLATION:

Read all instructions thoroughly. If at any time you are not confident in your ability or do not have the correct tools, seek the help of an automotive professional for installation.

Deck Lid Removal

Place blue painters tape on rear cowl behind hinges to protect finish, followed by a shop rag between the hinge and cowl. Once the weight of the deck lid is removed the hinges can swing up and contact cowl. With the help of an assistant to support the deck lid, remove the four 5/16" bolts attaching the deck lid to the existing hinges. Place deck lid to the side in a safe place.

Deck Lid Torque Rod Removal

Caution: The torque rods are under tension and extreme caution should be exercised. Do not use pliers or vice grips to release tension. Do not cut torque rods to remove them. Serious injury or damage to vehicle may occur.

Place a 1/4" I.D. x 5-3/8" long metal pipe on end of torque rod as shown in **Figure A** below. Pull back on pipe to release from hook and move torque rod to next hook. Alternating from side to side of vehicle repeat until each torque rod is on last upper hook. Finish by releasing each rod off the final hook and over the back allowing torque rod to swing up. Un-hinge torque rod from pivot. Remove torque rods from vehicle.

Factory Hinge Removal

Protect trunk area from metal shavings by covering or removing the upholstery.

Wearing safety glasses or goggles, carefully use the die grinder to remove the head of the hinge pin. The head of the hinge pin is located between the outer hinge bracket and the cowl/fender flange as shown in **Figure B** below. Remove hinge pin and hinge, repeat procedure for other side.

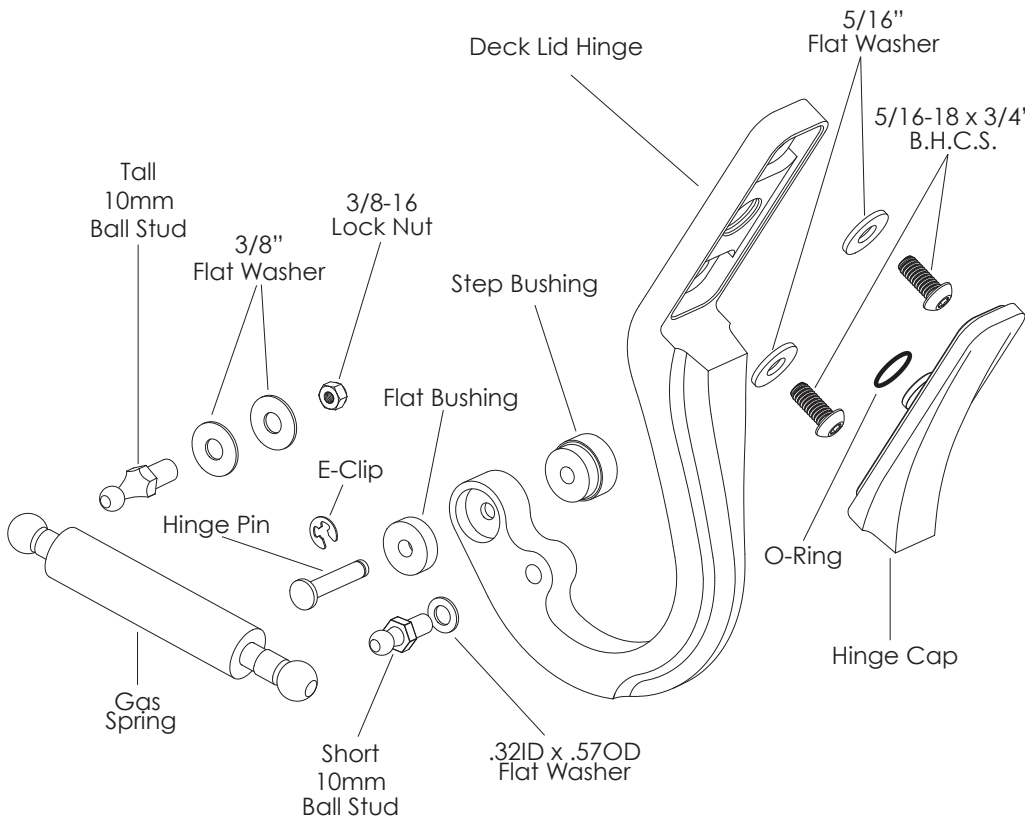


Figure A
Torque Rod Removal

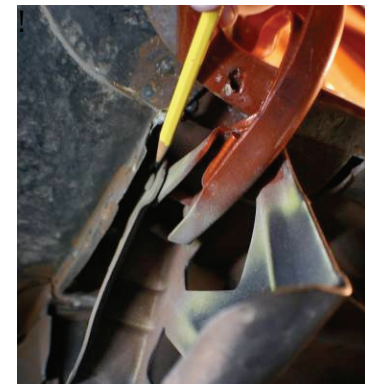


Figure B
Factory Hinge Removal



67-69 Camaro / Firebird Deck Lid Hinges

#875610 / #N875610 / #BLK875610

Rev-08/13

Install Billet Aluminum Deck Hinges

Assemble the driver/left side hinge first by placing the thin Delrin bushing to the outside of the car and the thick stepped Delrin bushing towards the center of the car. Place hinge between brackets and slide new deck lid hinge pin through bracket and bushings. Secure hinge pin by snapping E-Clip onto pin in recess.

Apply Loc Tite #242 locking compound to the treads of the **short** ball pivot. Place small diameter (.32x.57x.06) washer on ball pivot and thread into hinge with the ball facing towards the outside of the car. Tighten firmly.

Repeat assembly for other side by reversing the location of the Delrin bushings and ball pivot.

Gas Spring Installation

Trim Templates from sheet. Line up the front edge of each template with the front edge of each hinge bracket and tape into place. Centerline of template hole should be no less than 4" from the front edge of the hinge bracket as shown in **Figure C**. Each template must also be equal distance from forward edge to centerline. Use a center punch to mark the hole centerline in each template. Drill a 1/8" pilot hole in each bracket followed with a 25/64" drill bit. Place 3/8" flat washer on **ball** pivot and thread thru hinge bracket with the ball facing towards the outside of the car. Place second 3/8" flat washer with 3/8" nylon locknut and tighten firmly.

Carefully remove the small clips at each end of the gas springs. Install the shaft side of the gas spring first onto back ball pivot located on body hinge bracket and snap into place. Install small clip to secure ball cup to ball. Swing gas spring up to meet the body side of gas spring to the ball pivot on billet hinge. Finish by installing small clip to secure ball cup to ball. Repeat for other side.

Check clearance between hinge and cowl at this time. Hinge should not contact cowl and both hinges should be equal in distance from hinge to cowl.

NOTE: Due to manufacturing differences, the hinge brackets may not be installed at the factory in equal locations. If the billet deck hinges come in contact with the cowl or are not the same distance from the cowl, the following adjustment can be made. If one of the hinges is too close or contacting the cowl, elongate the hole on the hinge bracket towards the front of the car. To move the hinge toward the cowl, elongate the hole towards the rear of the car.

Deck Lid Installation

With the help of an assistant to support the deck lid, install the four 5/16-18 x 3/4" stainless button head cap screws with 5/16" flat washers to attach the deck lid to the hinges. Align deck lid to vehicle, then tighten fasteners firmly. Finish installation by pressing hinge caps into place.



Figure C
Line up template with edge of bracket

Hinge Bracket Drill Template

