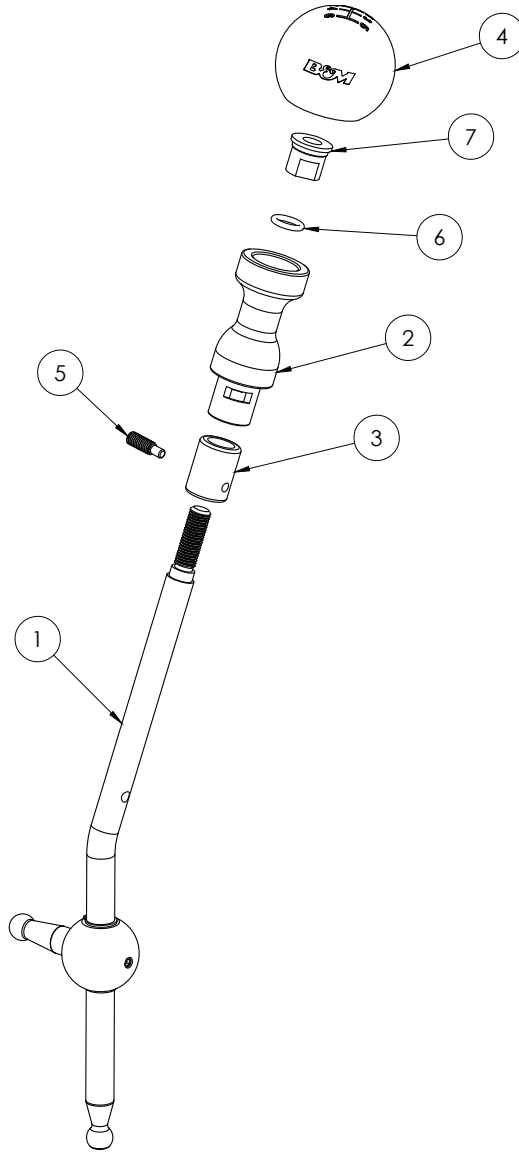




Installation Instructions  
**45197**  
 2018-20 JEEP WRANGLER JL  
 2020 JEEP GLADIATOR  
 3.6L ENGINE



ITM #	PART #	DESCRIPTION	QTY.
1	4101389	Shifter Assembly	1
N/A	45197BA-01	Hardware Pack includes:	1
2	4101385	Reverse Lockout	1
3	4101386	Lockout Collar	1
4	4101387	Knob	1
5	3401606	Set Screw	1
6	3401607	10.50MM ID x 2.5MM W. O-Ring	1
7	3401608	Jam Nut	1
N/A	4100448	Grease Packet	1

## OVERVIEW:



1. Please take a moment to read and understand these instructions before installing your purchased performance kit.

**NOTE:** Please inventory all parts now before continuing and if necessary, report any missing items to our tech line. This will avoid potentially stranding your vehicle until any missing replacement parts arrive.

### WARNING:

For maximum safety, perform this installation on a clean, level surface with engine turned off. Chock wheels and do not attempt installation until you are confident your vehicle will not move.



2. Turn off ignition, set shifter into neutral then tape over shifter and console in places shown to prevent scratching.

## PREPARE VEHICLE FOR INSTALL:



3. Remove shift knob from shifter stem.



4. Remove spring and spacer from shifter stem. Retain spring for later use.



5. Remove transfer case shifter boot by feeling frame through lining and pulling it up and out of console.



6. Pull transfer case boot up to expose securing screw. Remove screw then pull transfer case shifter boot and knob off of stem. Retain them for later use.



7. The console top is secured to frame with plastic clips just inside its edge. Unclip them with a plastic tool to release console top.



8. Pull up console top from frame then release shifter boot as shown.



9. Remove reverse lockout assembly from shifter and retain it for later use.

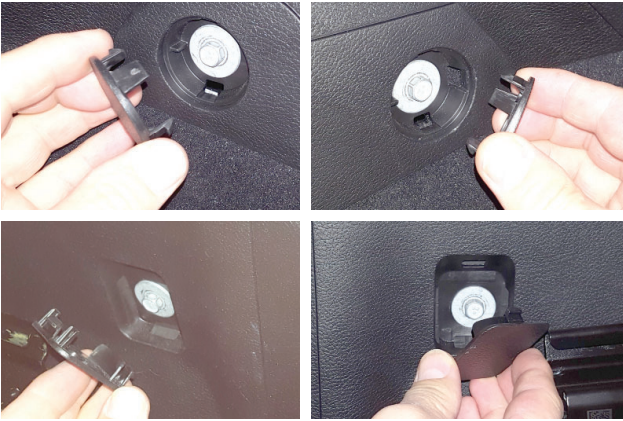


10. Unplug cupholder wiring underneath console top.



11. Remove console top from frame and retain it for later use.

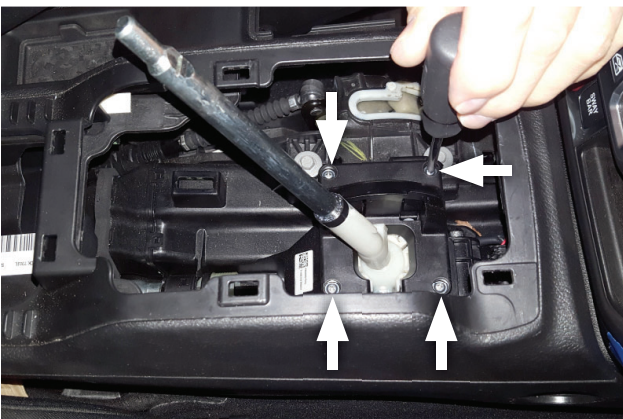




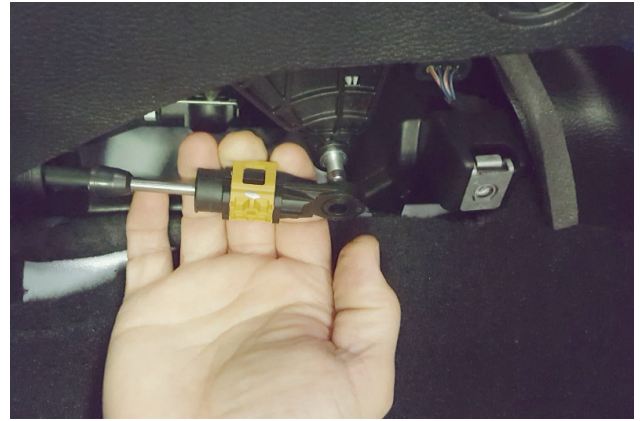
12. Remove (x4 ea.) plastic caps and screws from all four corners of console. Retain them for later use.



13. Pull up on front of console until you can use transfer case shifter stem as a prop for support.



14. Remove screws (x4) and pivot cover plate from around base of shifter.



15. Disassemble side cable from side pivot arm, accessed on front passenger side of console.

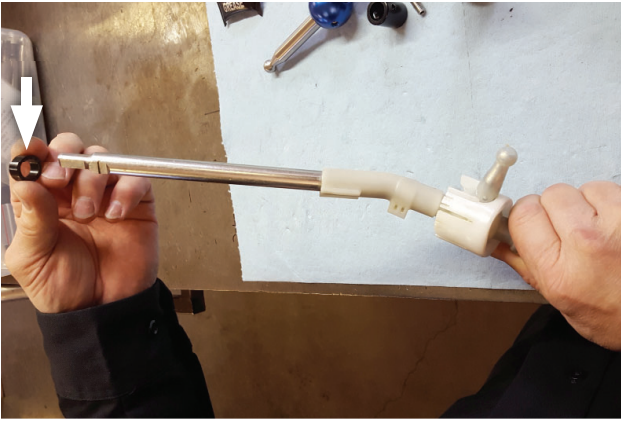


16. Disassemble lower cable from pivot cup, accessed on front passenger side of console.

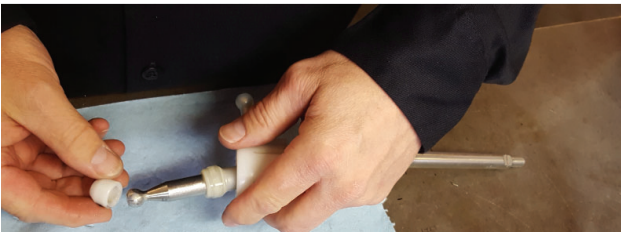


17. Lift shift lever upward while rotating side pivot arm upward to release shifter from base. Remove and retain shifter for later use.

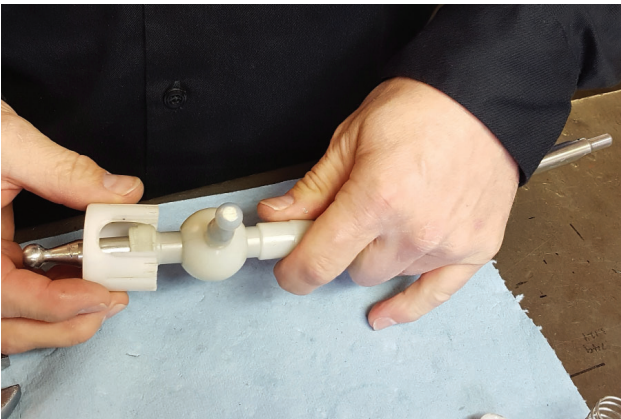




18. Remove rubber stop from shifter and retain it for later use.

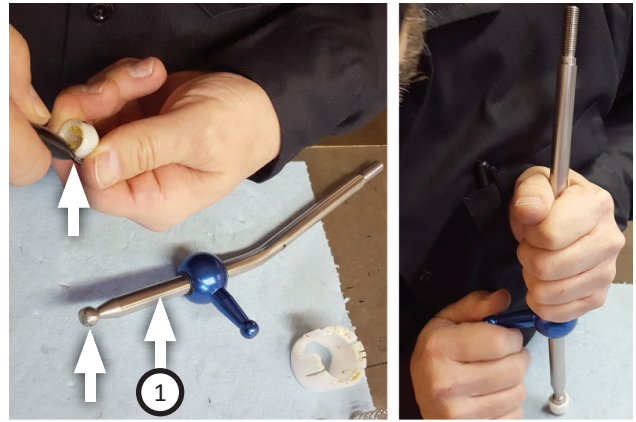


19. Remove cable pivot cup from shifter and retain it for later use.

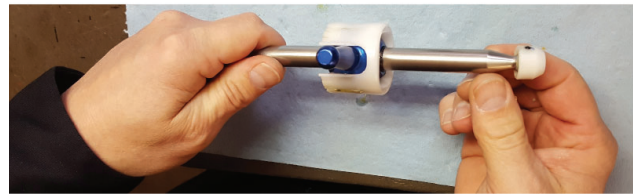


20. Remove shifter pivot cup from shifter and retain it for later use.

### Install B&M 6-Speed Sport Shifter kit:



21. Apply grease from kit to pivot cup (removed step 20) and bottom pivot arm of **shifter assembly (1)**. Then install pivot cup onto shifter assembly.



22. Apply grease from kit to pivot cup housing (removed step 21) and pivot on shifter assembly. Install pivot cup housing onto shifter assembly.



23. Pull factory reverse lockout bottom from stock shifter handle assembly (removed step 10) and retain it for later use.





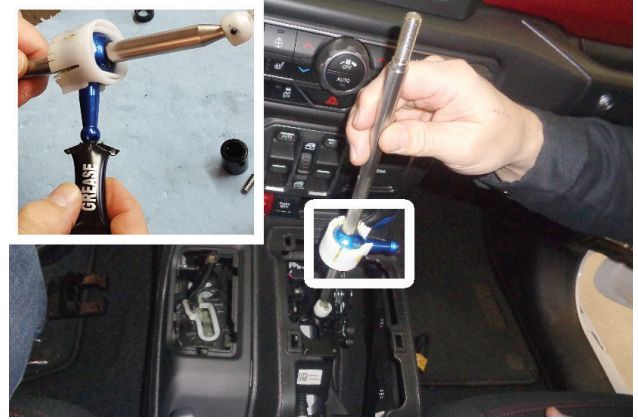
24. Remove factory reverse lockout top from boot by unclipping it at its base then pulling it out. Retain boot for next step.



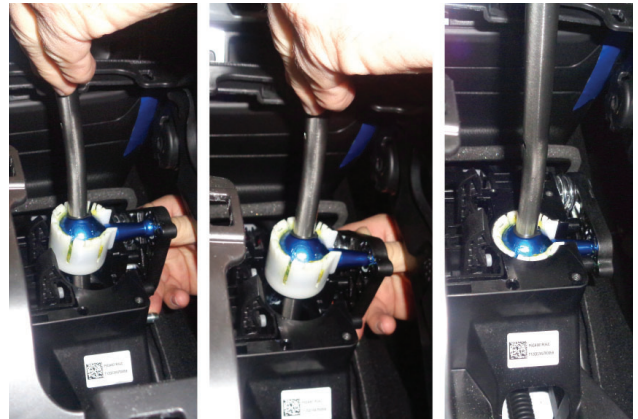
25. Align slot on **reverse lockout (2)** toward rear side of boot. Install reverse lockout into boot.



26. Insert reverse lockout factory bottom (removed step 24) into boot aligned with slot and press it into reverse lockout top until components click together.



27. Apply grease to shifter side pivot arm. Set shifter assembly into position in vehicle where shown.

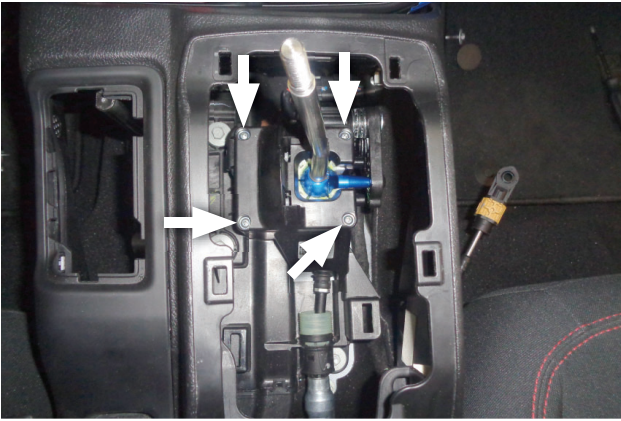


28. On shifter base, rotate side pivot arm upward, align shift lever over base and snap side pivot ball into pivot arm. Then push shift lever and main pivot ball cup into shifter base until they are flush at top.



29. Set pivot cover plate (removed step 15) into position at base of shifter as shown.

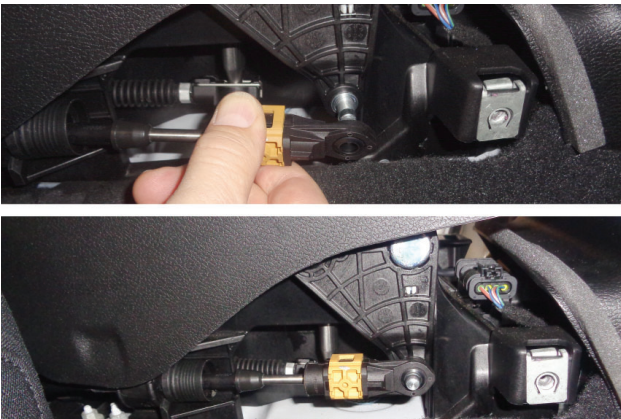




30. Install screws (x4) (removed step 15) to secure pivot cover plate onto base of shifter.



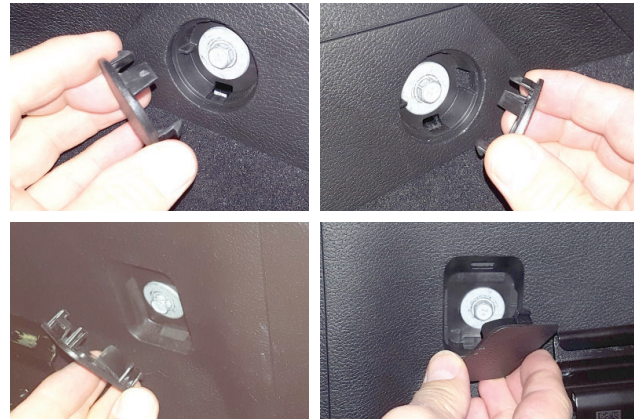
31. Install lower cable onto pivot cup, accessed from front passenger side of console.



32. Install side cable onto side pivot arm, accessed from front passenger side of console.



33. Replace console back in place as shown.

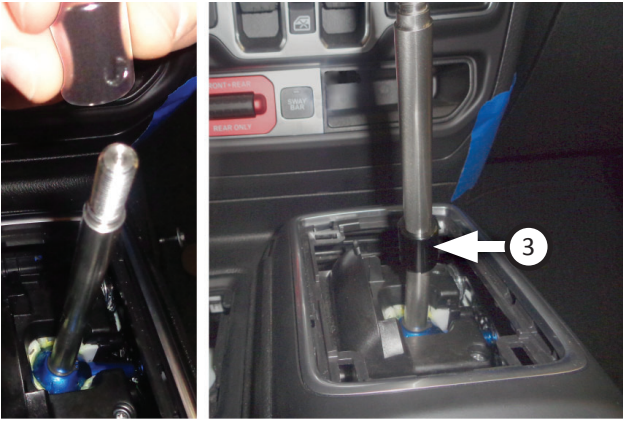


34. Install (x4 ea.) plastic caps and screws (removed step 13) into all four corners of console.



35. Plug cupholder wire back into console then replace console top.





36. Slide **lockout collar (3)** back onto shifter assembly with large side hole oriented towards passenger seat.



39. Install shifter lockout assembly onto shifter stem.



37. Install rubber stop (removed step 19) onto shifter assembly until it rests on lockout collar.



40. Install **O-ring (6)** onto shift stem so it rests in groove as shown.



38. Apply grease to stem of shifter handle and collar.



41. Place spring (removed step 5) onto shifter so it rests in reverse lockout.





42. Thread **jam nut (7)** onto shifter stem then finger-tighten it fully.



43. Install **knob (4)** onto shifter stem then finger-tighten it fully.



44. Turn knob back until it is aligned to your preference, then adjust jam nut to set knob in place.



45. Apply blue permatex thread locker (or similar) to **set screw (5)**. Pull up on reverse lockout to expose and align parts at alignment hole in shifter stem, then install set screw as shown.

**NOTE:** When installing set screw, make sure end of screw enters slot inside lower portion of reverse lockout.



46. Set boot down into console in place.



47. Place transfer case shifter (removed step 7) back into place on stem.



48. Install screw (removed step 7) to secure transfer case shifter to stem.



49. Replace boot back onto console.



50. Ensure smooth and accurate engagement of all gears and proper operation of reverse lockout before starting car. Pay special attention to engagement of First, Second and Reverse gears.

Congratulations, the installation of your **B&M 6-Speed Sport Shifter** is now complete!

