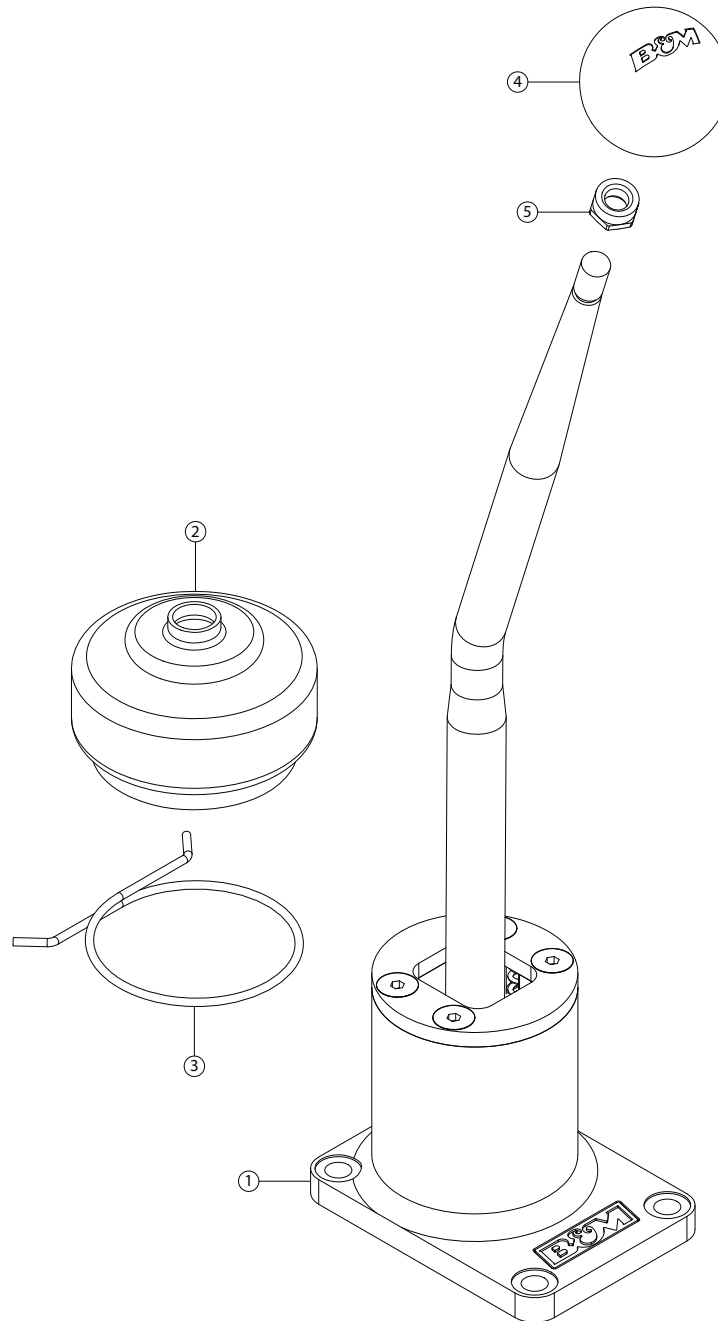




Installation Instructions  
**45059**  
 1988-99 JEEP WRANGLER, 1989-99 JEEP CHEROKEE & 1989-92 JEEP COMANCHE  
 with AX15 Manual Transmission



ITM #	PART #	DESCRIPTION	QTY.
1	6410056	Shift Assembly	1
2	4100497	Small Shifter Boot	1
3	4100499	Retaining Boot Ring (Small)	1
4	4101359-88	Shift Knob	1
5	1794719	Shift Handle 3/8-16 Lock Nut	1

## OVERVIEW:



1. This B&M Precision SportShifter is specifically designed for 1990-98 Jeep Wrangler 4.0L models with AX-15 5-speed manual transmission but is also compatible with 90-98 Jeep Cherokee and Comanche. It is engineered to greatly reduce shift throw and improve shift feel.

**NOTE:** Please inventory all parts now and if necessary, report any missing items to our tech line.

### WARNING:

For maximum safety, perform this installation on a clean, level surface with engine turned off.

### CAUTION:

To avoid bodily injury or vehicle damage, chock wheels and do not attempt installation until you are confident your vehicle will not move.

## REMOVE STOCK COMPONENTS:

**NOTE:** Some steps may contain multiple images to cover all applications for this product.



2. Remove stock shift knob insert.



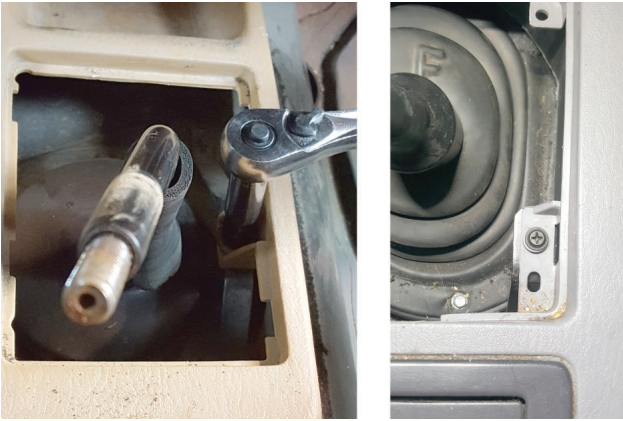
3. Remove stock shift knob jam nut.



4. Remove stock shift knob.



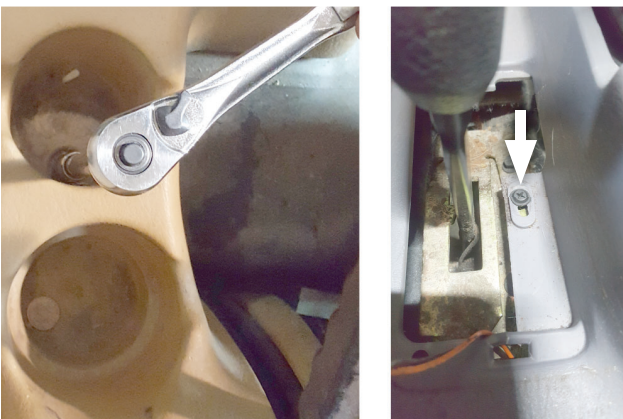
5. Remove shift boot.



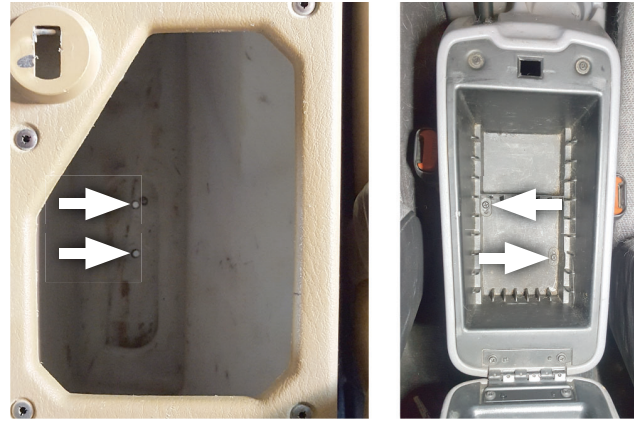
6. Remove and retain center console fastener near shifter.



7. Remove 4wd selector cover or remove and retain fasteners securing passenger side of center console.



8. Remove and retain and center console fasteners from cup holder or under 4wd selector.



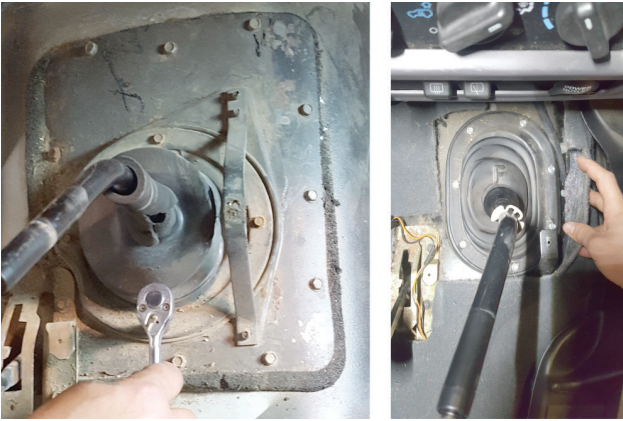
9. Remove and retain center console bolts (x2) from storage console.



10. Pull up 4-wheel drive shift lever.

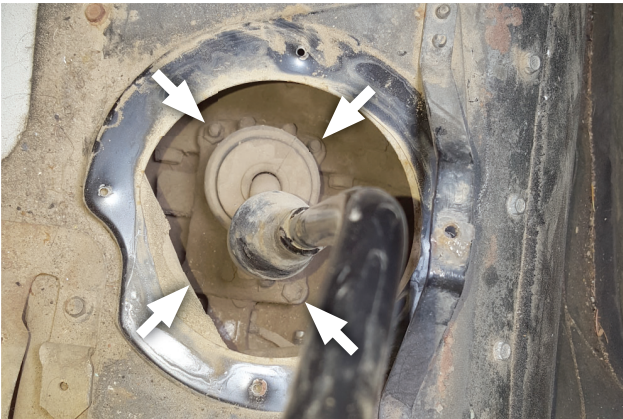


11. Remove center console.



12. Remove bolts and rubber protective boot.

**NOTE:** It may be necessary to trim boot slightly around stick to remove it.

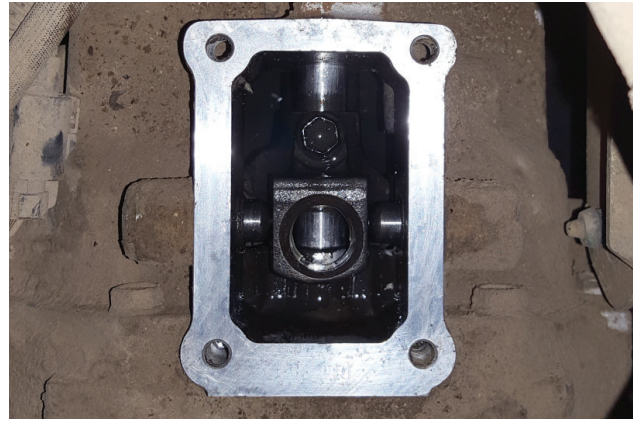


13. Remove bolts (x4) securing shifter to transmission.



**NOTE:** Inspect pivot cup for wear and tear. If necessary, you may want to purchase another before completing this install.

14. Pry pivot cup from stock shifter.



15. Clean mounting surface on transmission.

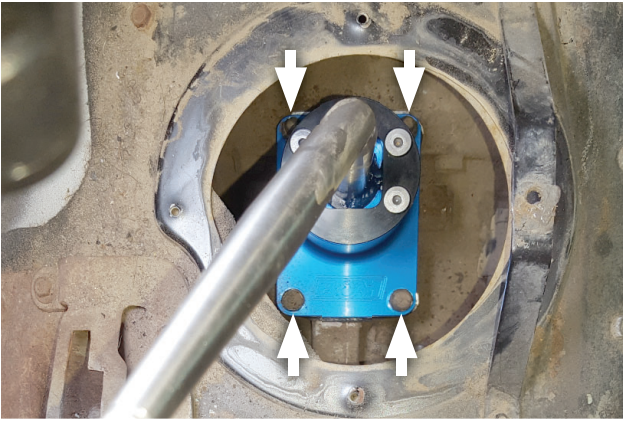
### Assemble & Install Precision Sport Shifter:



16. Press pivot cup onto B&M Shifter.



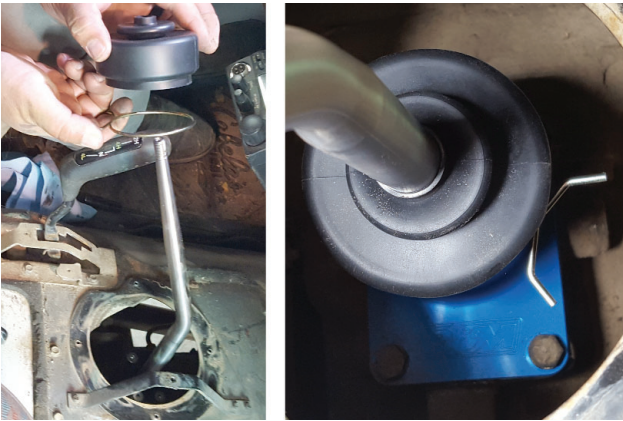
17. Install new shifter base gasket (not included) or apply RTV silicone sealant to the B&M shifter base.



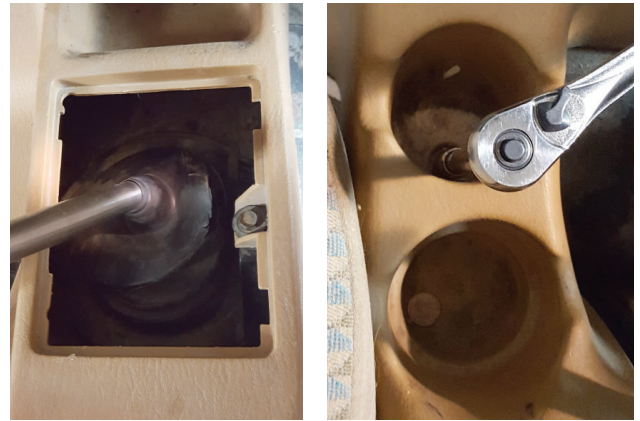
18. Fasten **shift assembly (1)** to factory shifter base using bolts (x4) removed step 13.



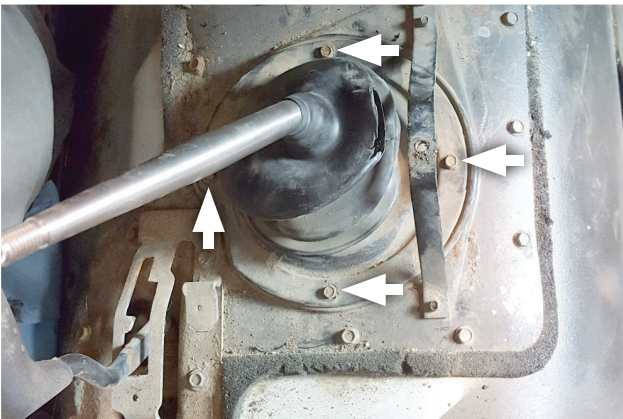
21. Set center console cover back into place.



19. Use **retaining boot ring (3)** to secure **shifter boot (2)** onto shifter base.

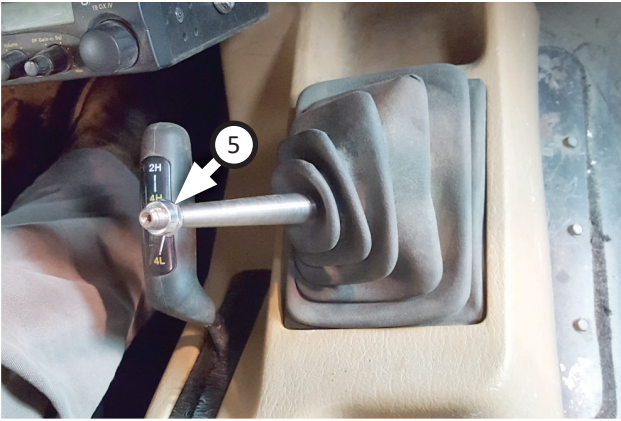


22. Secure center console using fasteners from step 6 through 9.



20. Re-install rubber protective boot and bolts removed step 12.





23. Re-install shift boot, then thread **shift handle lock nut (5)** onto shifter stem.



24. Thread **shift knob (4)** onto shifter stem.



25. Adjust knob until it is in optimal position, then tighten it in combination with lock nut to secure it in place.



26. Test shifter engagement in each gear, then tighten all parts and verify shifter function once more.

**WARNING:**  
DO NOT operate vehicle until all gears can be smoothly and fully engaged.



Congratulations, the installation of your B&M Precision SportShifter is now complete!

