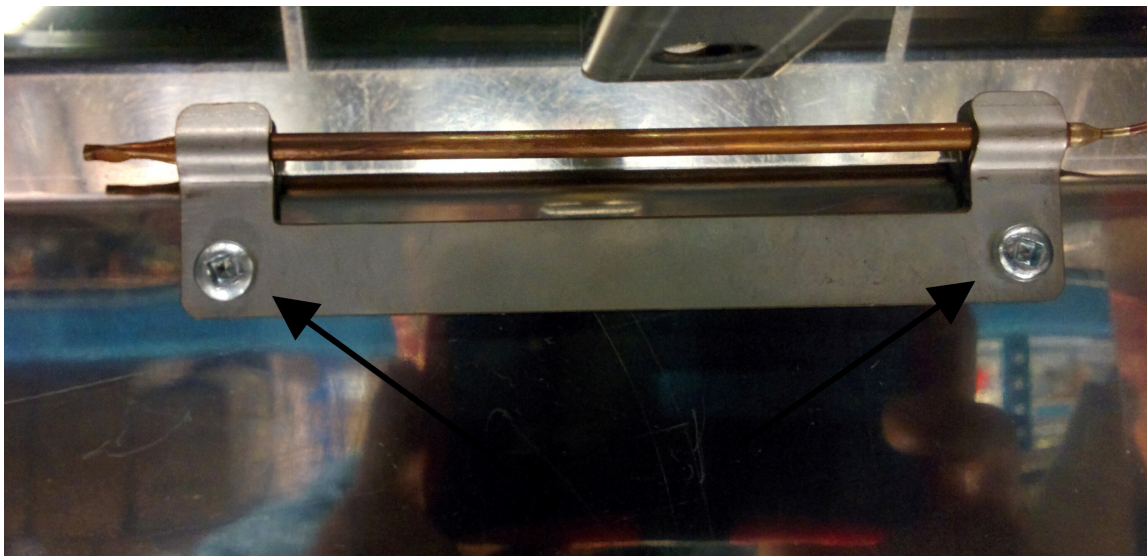


Removing/Installing an Oven Valve in a Mediterranean or Caribbean

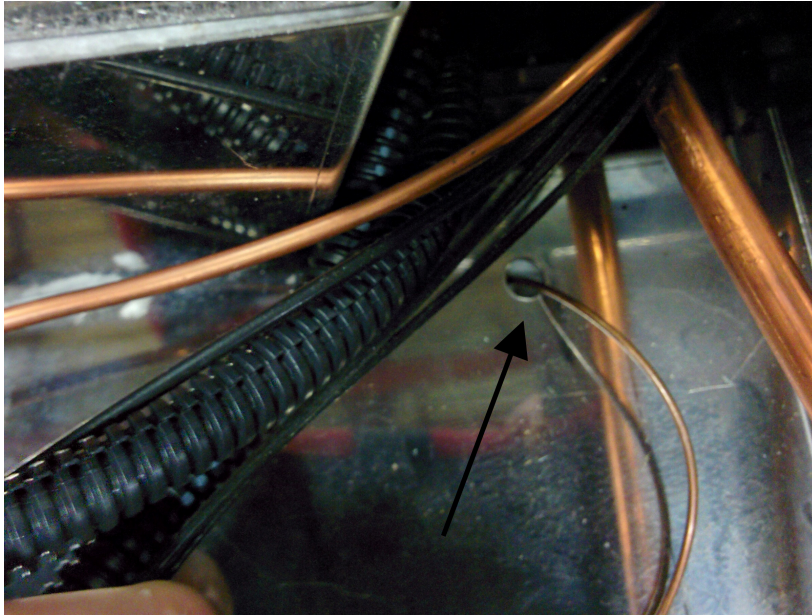


All steps must be followed precisely. Failure to do so could cause a fire or explosion which could result in serious injury or death.

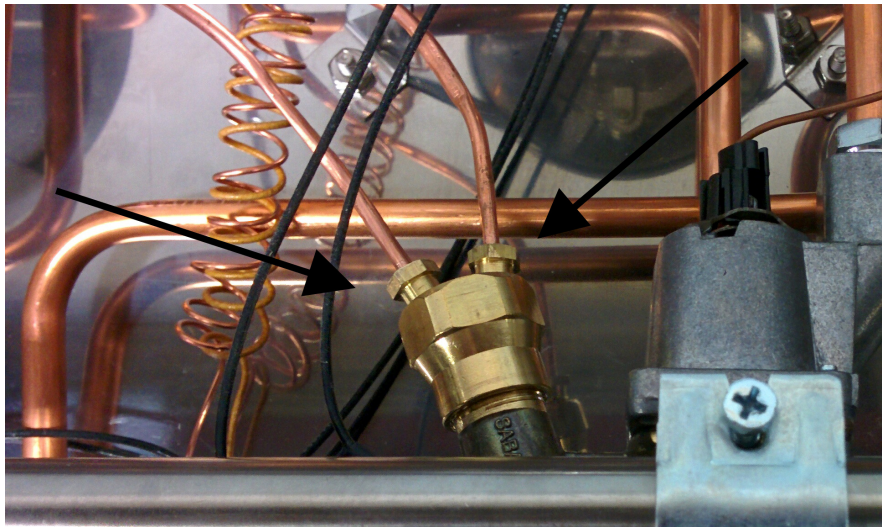
1. Inside the oven, undo the two screws holding the oven probe brackets. Do not remove screws but loosen until the probe will slide out



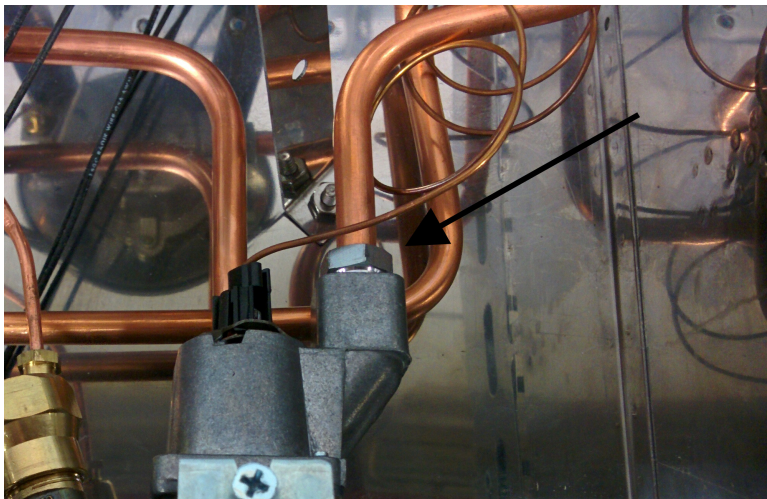
2. Slide the oven probe out of the hole in the oven.



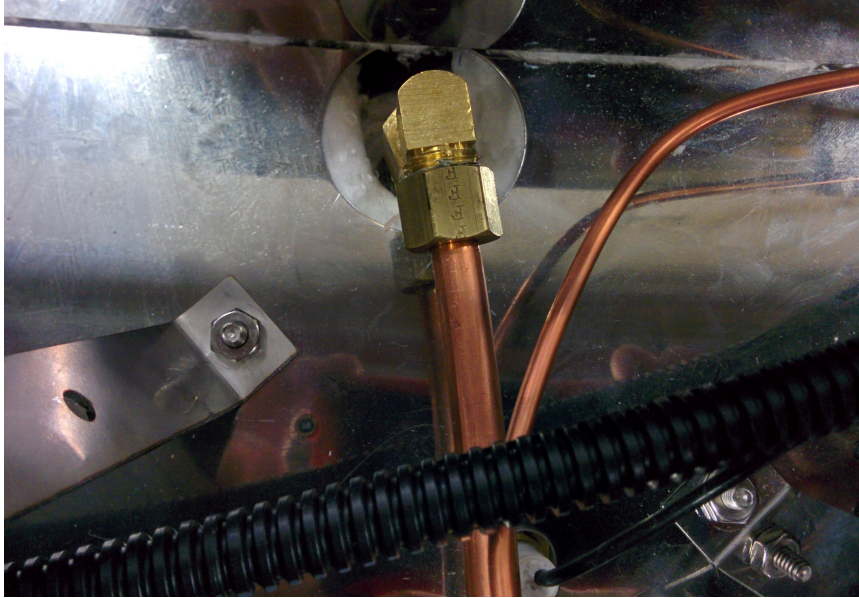
3. Undo the two thermocouples connected to the valve



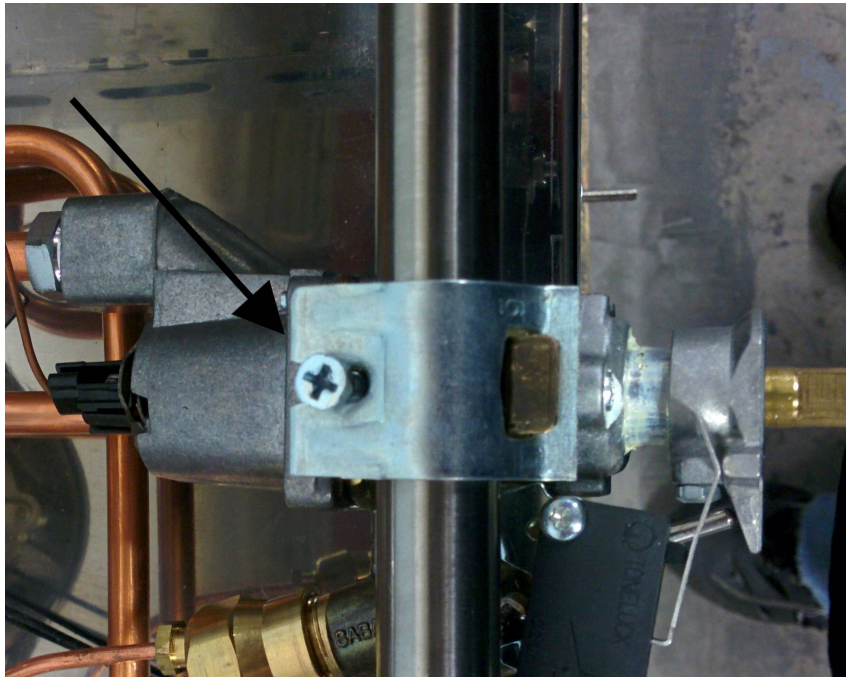
4. Undo the oven burner connection at the valve using a 13mm wrench



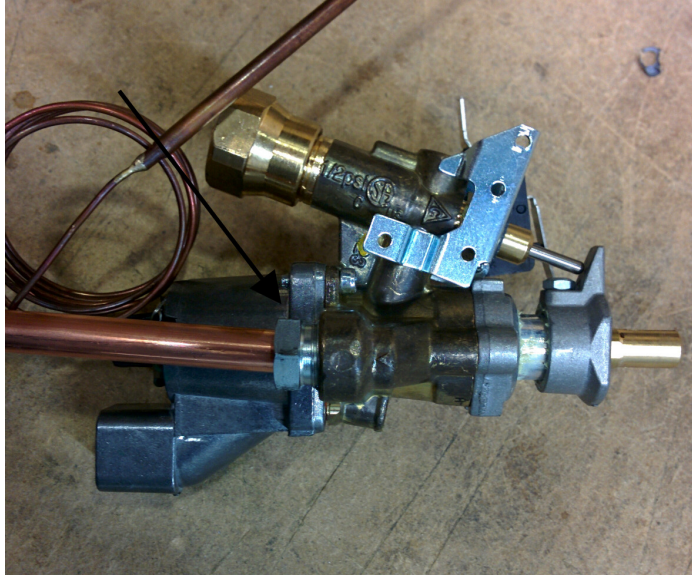
5. Remove the broiler connection at the back of the stove. Use a pair of vice grips to brace the fitting when undoing the compression fitting with a 9/16" wrench.



6. Undo the screw to remove the bracket that holds the valve to the manifold. Remove the bracket and the valve will be free. The valve may need a little downward pressure to come free from the manifold.



7. Remove the copper line from the underside of the old valve and install on the new valve. To ensure a firm connection, place the valve in a vice being careful to only squeeze the center square block gently.



8. Follow directions 1-6 in reverse order to re-install the new valve. Make sure to use a thread sealant on all gas connections.

DANGER

**ALL CONNECTIONS MUST
BE TESTED FOR LEAKS
WITH A SOAPY WATER
SOLUTION BEFORE STOVE
IS RE-ASSEMBLED**