

# A1C EZ

Unique Handheld POCT HbA1c Analyzer  
(Boric Acid Affinity Chromatography)

## CONVENIENT PRECISE FAST

Point-of-Care Test (POCT) HbA1c: Diabetes Management Expert

Model	A1C EZ
Testing range	4.0% ~ 14.0%
Testing time	Around 6 minutes
Blood volume	About 3 $\mu$ L
Operating temperature	10°C ~ 40°C
Operating humidity	30% ~ 75%
Dimension	Depth (100 $\pm$ 2) mm x width (50 $\pm$ 2) mm x height (18 $\pm$ 2) mm
Weight	About 88.5g (with battery)
Power required	3V CR2032 battery x1
Blood sample	Finger blood or venous blood
Storage condition	Store the packaged A1C EZ at -10 ~ 50°C (14 ~ 122°F), relative humidity range $\leq$ 80%, dry and drafty indoors.
Store at room temperature.	
Keep sunlight from direct irradiation and keep off the high humidity.	
Do not crash the analyzer or drop from high place.	
Do not disassemble the analyzer without professional guidance.	

National patent: ZL02804372.3  
International patent: USP7195923  
Medical Device Registration Certificate No.: 2400062/2400064 of 2014 Jiangsu CFDA



**Wuxi BioHermes Bio & Medical Technology Co., Inc.**  
136 Meiliang Road, Mashan, Wuxi, Jiangsu, 214092, China  
Email: emmagao@biohermes.com.cn  
www.biohermes.com



*Not a Glucometer, but better than a Glucometer*

## CONVENIENT PRECISE FAST

### Convenient

- Compact (business card size), light (60g), handheld, portable;
- Test about 3  $\mu$ L of blood from the finger or venous blood directly;
- Battery-driven, without being limited by the fields;
- Store the kits at room temperature. The validity is longer than one year;
- Single sample testing, random testing;
- No frequent quality control and calibration required;
- Easy to operate;

### Precise

- Boric Acid Affinity Chromatography, accurate results, CV<4%;
- Free of the interference of HbF, variation of hemoglobin and unstable Glycohemoglobin;

### Fast

- No need to preheat before testing;
- Test at room-temperature, and get the results within 5 minutes;

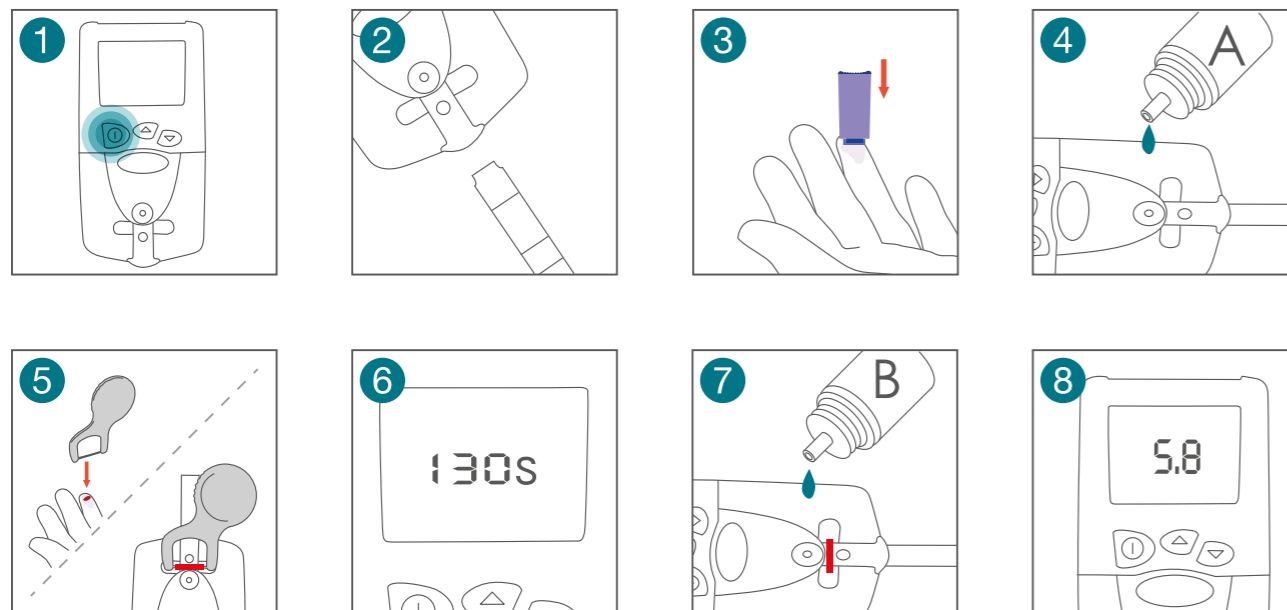
### IFCC Authentication certificate



### NGSP Authentication certificate



## EASY TO OPERATE

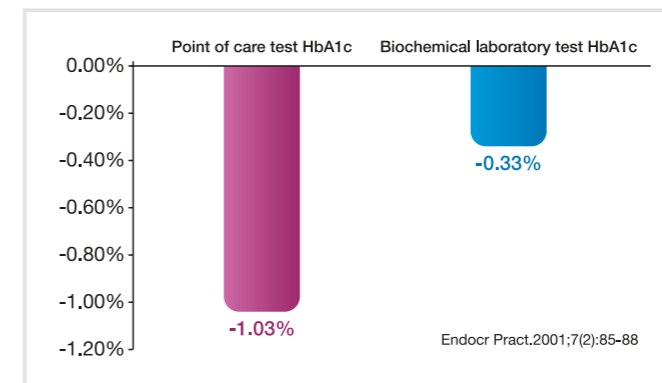


## A1C EZ

### A1C EZ Test Principle

The product uses the Boric Acid Affinity Chromatography to quantitatively test the percentage of glycohemoglobin A1c (HbA1c) in total hemoglobin, boric acid can specifically combine with. cis diol of glucose on the surface of stable glycohemoglobin molecules, quantitatively test the glycohemoglobin.

Jointly recommended by the American Diabetes Association (ADA) and the International Diabetes Federation (IDF), HbA1c rapid test of outpatient lets the doctor timely adjust the treatment protocols. Rapid, effective test HbA1c allows for the doctor and the patient to quickly and efficiently discuss the state of diabetes in time, and to educate the patient to control HbA1c and meet standard requirements, and to enhance the relationship between the patient and doctor; Point of care test, face-to-face counseling HbA1c results can help patients comply with doctor's advice, and can strengthen the diabetes patient's ability of management; Clinical benefits of rapid tests have been confirmed: the drop range (1.03%) of patients by adopting the method of real-time test HbA1c was significantly greater than the drop range (0.33%) of patients by adopting laboratory test method.



### HbA1c test frequency, American Diabetes Association (ADA) suggests

Once a month, after the blood glucose is under satisfaction control, once every 6 to 8 weeks, until pregnancy.

#### Diabetics who are planning a pregnancy

- 4 to 6 times a year, diabetics who control the blood glucose unsatisfactorily.
- 2 times a year, diabetics who control the blood glucose satisfactorily and stably.
- 1 time a year, diabetics with high-risk population screening .

